

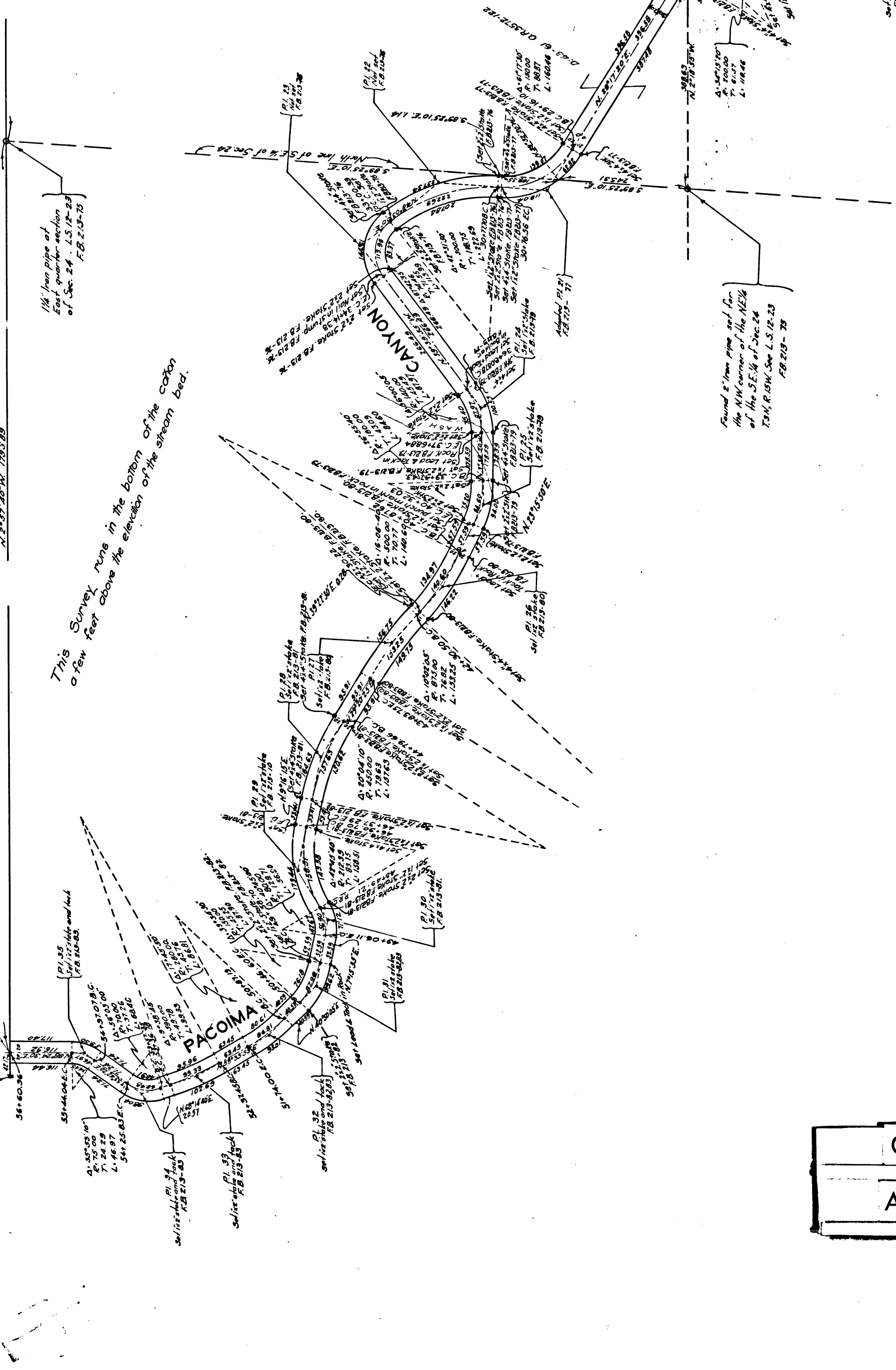
Found Witness Corner 124
Iron post filled with concrete
Leans slightly to the east.
Marker on Plat. 134, 135 &
136 R. 35. See C.S. 8273
S.S. See F.B. 213-83.

This point is on the trail
above the iron post above
the corner of Sec. 24.

N. 2° 57' 20" W. 1793.89

1 1/2" iron pipe at
East quarter section
of Sec. 24. L.S. 12-23
F.B. 213-73

This Survey runs in the bottom of the canyon
a few feet above the elevation of the stream bed.



Found 2" iron pipe set for
the NW corner of the NE 1/4
of the S.E. 1/4 of Sec. 24
T. 34 N. R. 10 W. S. 12 E. 23
F.B. 213-73

CS	8517
A1	OF A3

T.3N..R.14 W.

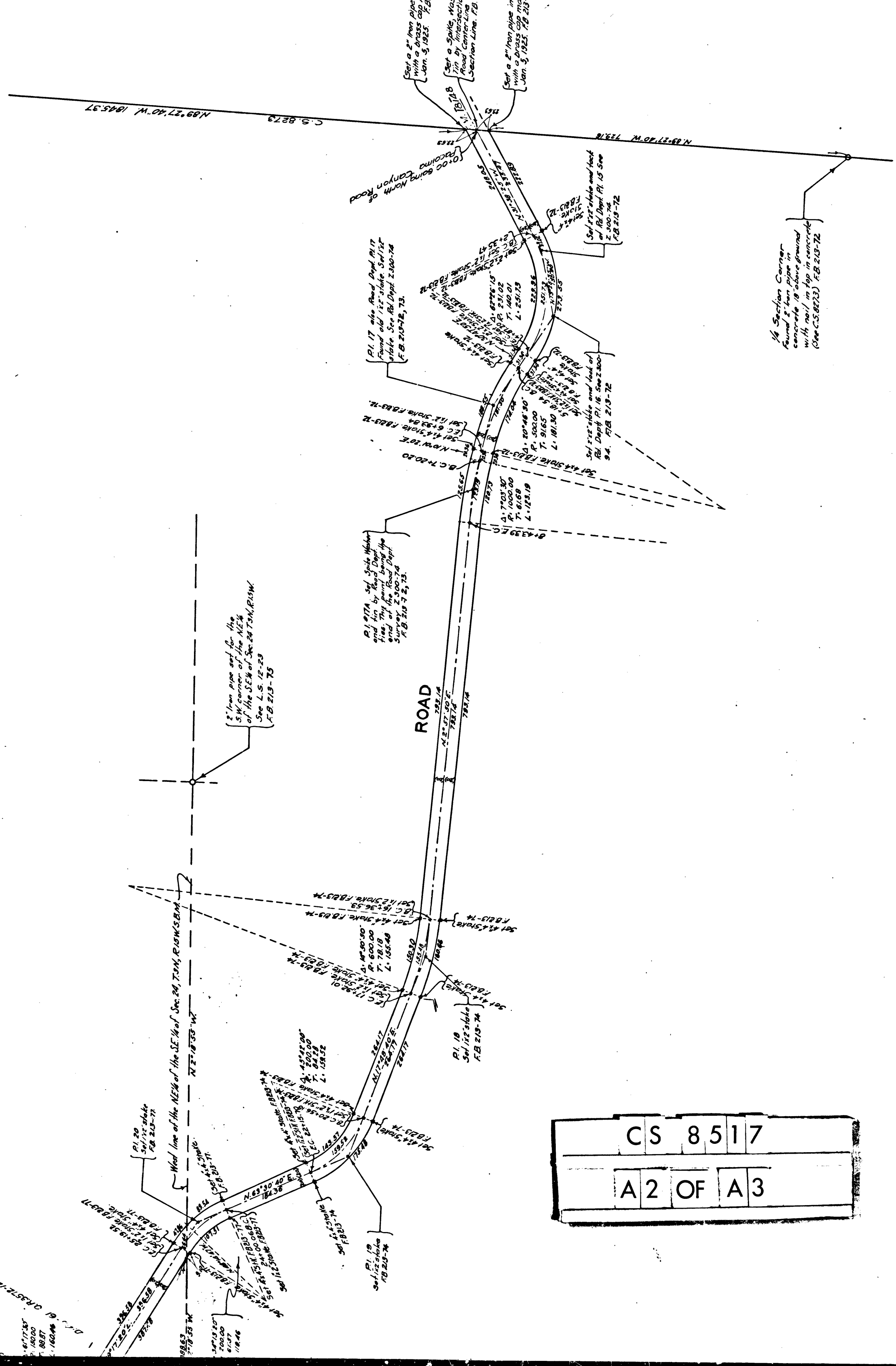
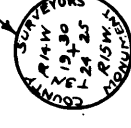
T.3N..R.15 W.

C.S. 8273 N. 2° 37' 40" W. 26.300

19 30

24

S.E. corner, Sec. 24
Found a 2" iron pipe
with brass cap marked
FB 6-118, F.B. 210-72



CS	8517	
A2	OF	A3

