

Elev. 160

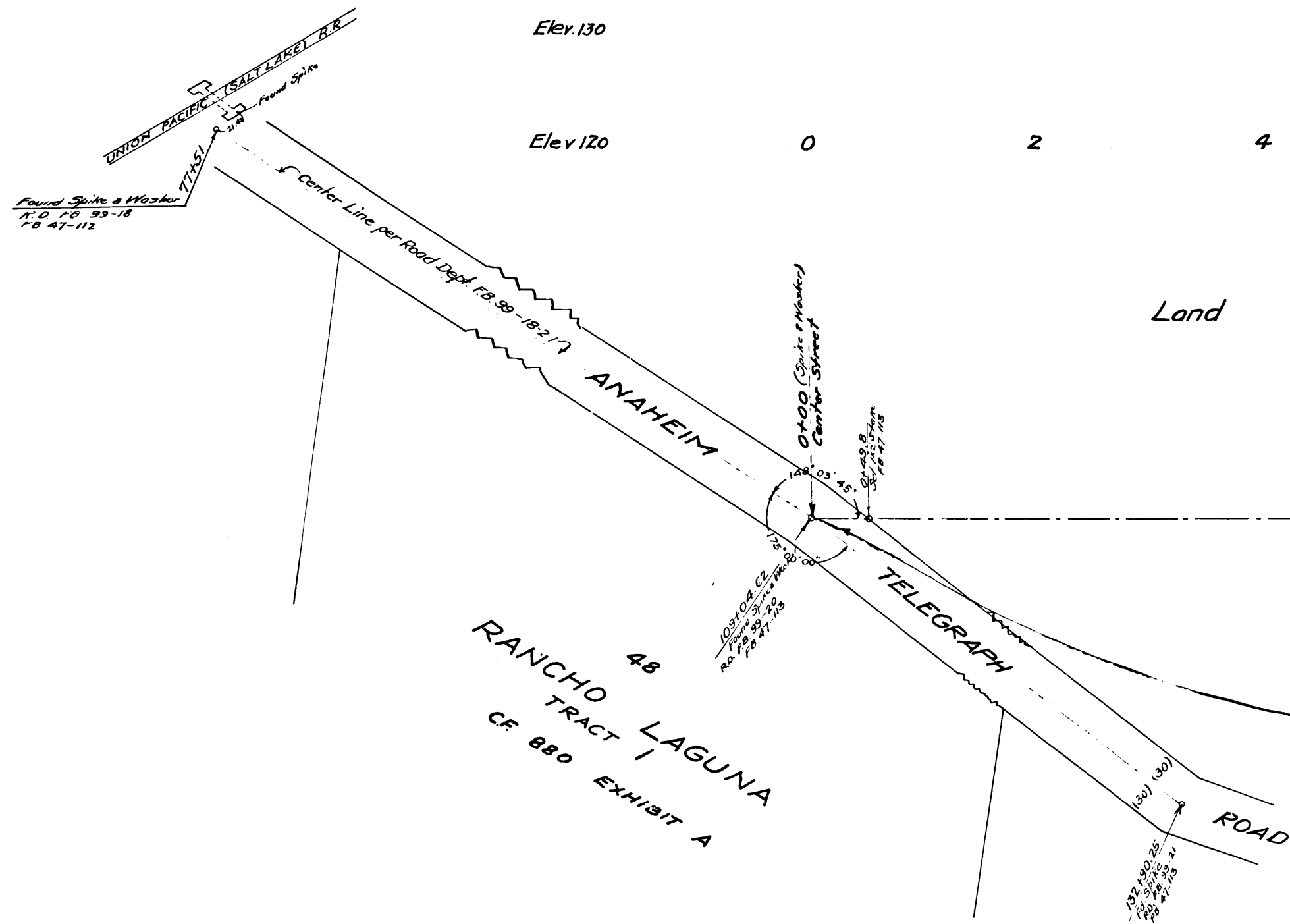
Elev. 150

Elev. 140

Elev. 130

Elev. 120

0 2 4 6 8 10 12 14 16 18



Land Not under Cultivation

Cabbage

*This Alignment of Center St. Abandoned,
 For Later Surveys See C.S.B-458, C.S.8723 and C.S.B-529
 For Finally Adopted Alignment See C.S.*

CS	8	5	3	5
A1 OF A5				

Elev. 180

Elev. 160

Elev. 140

18

20

22

24

26

28

30

32

34

36

38

40

42

44

Cabbage

Alfalfa

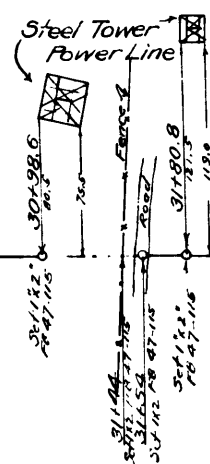
Borley

Land

under

Cultivation

Lettuce



S 75° 08' 40" E

CENTER

CS	8	5	3	5
A	2	CF	A	5

Elev. 180

Elev. 160

Elev. 140

44 46 48 Elev. 120 50 52 54 56 58 60 62 64 66 68 70

Cultivation

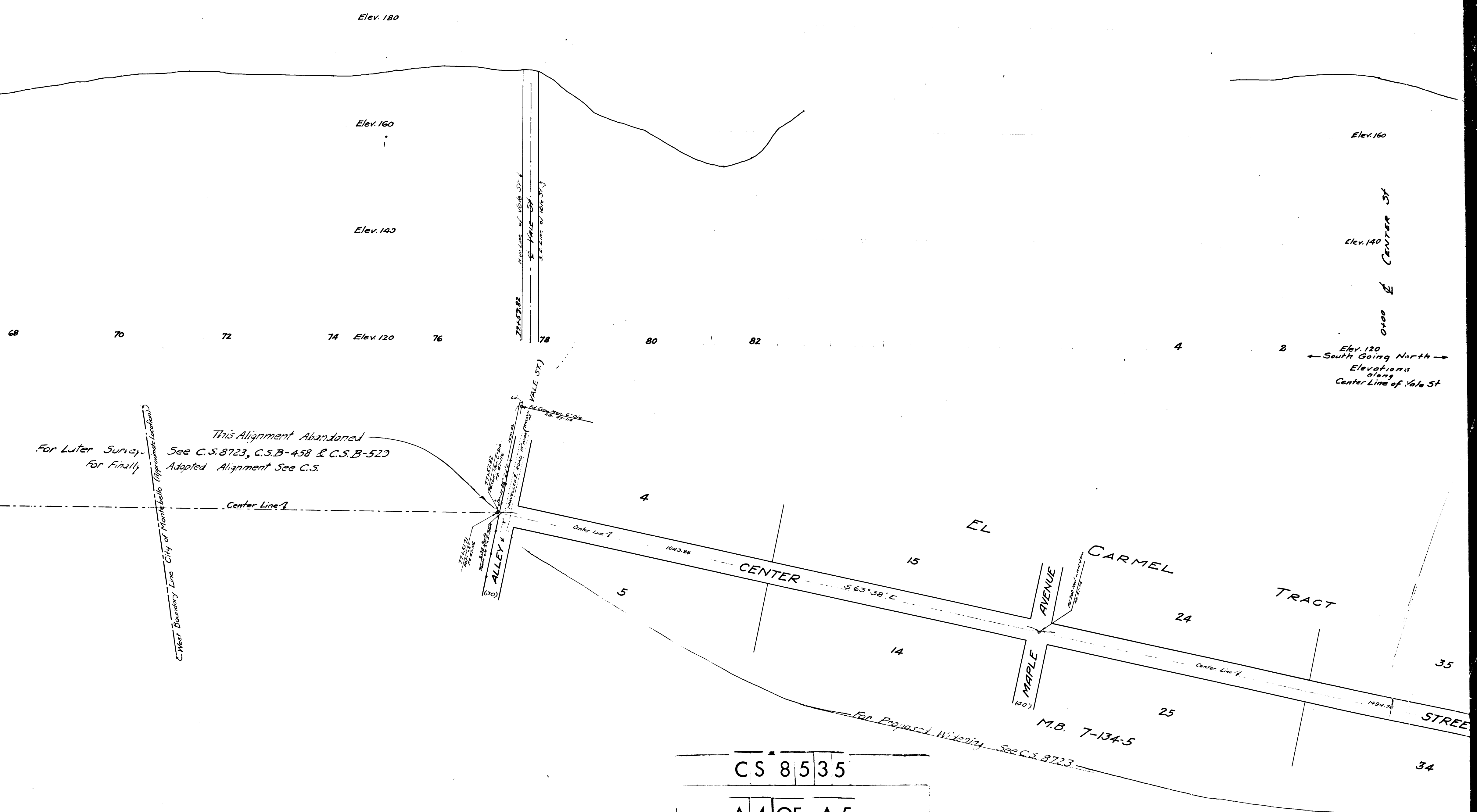
Barley

Center Line A

STREET

For Later Survey
For Finaly

CS	8	5	3	5
A	3	OF	A	5



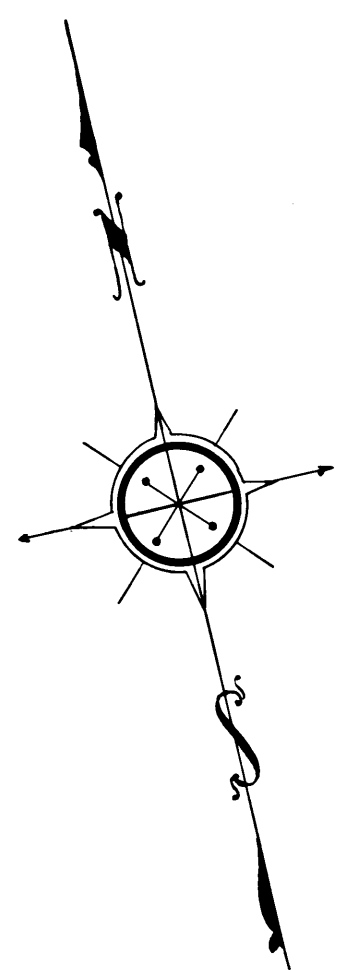
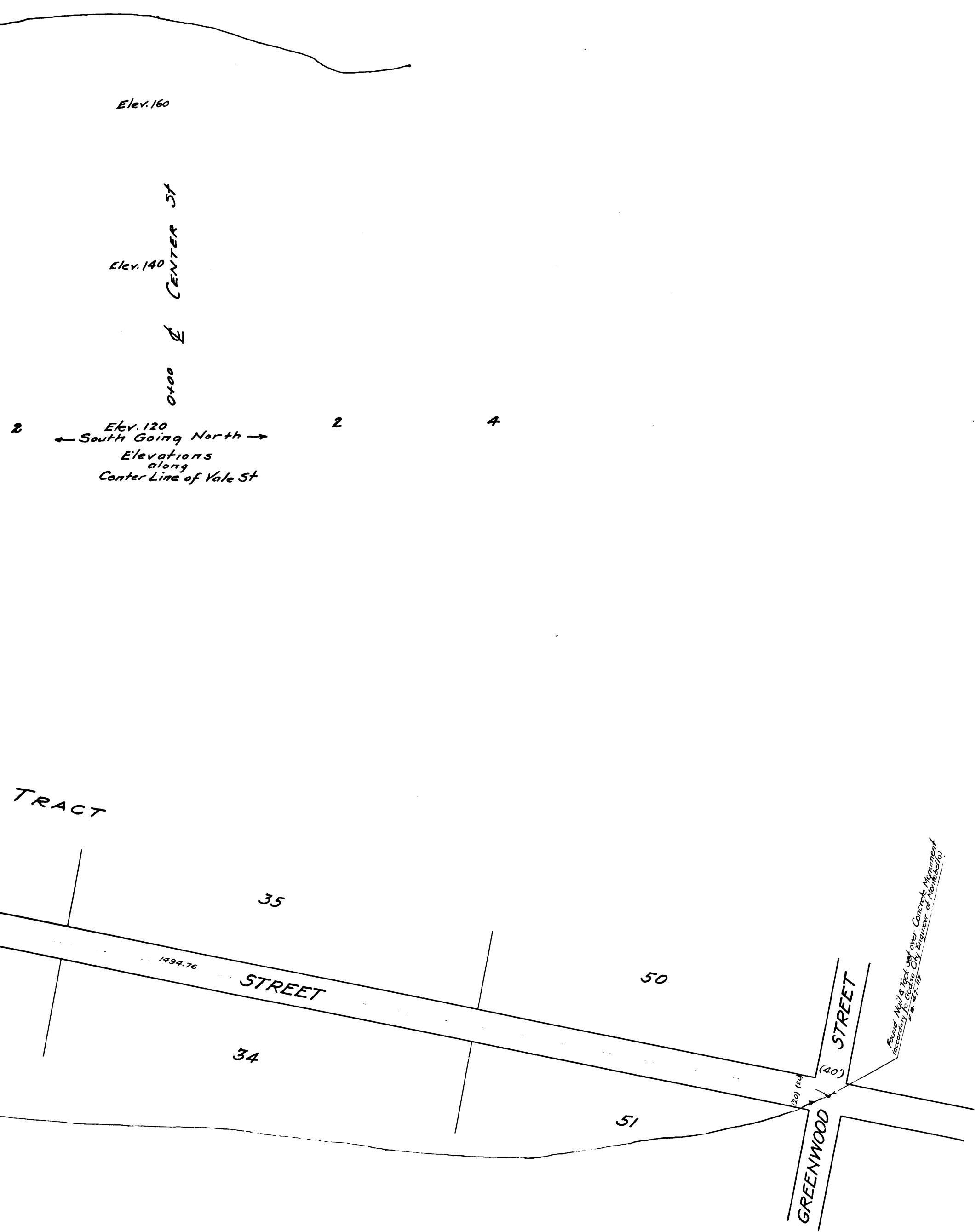
*This Alignment Abandoned
See C.S. 8723, C.S.B-458 & C.S.B-523
Adopted Alignment See C.S.*

*Elev. 120
← South Going North →
Elevations
along
Center Line of Valle St*

For Proposed Widening See C.S. 8723

City of Montebello (Approximate Location)

C	S	8	5	3	5
A	4	OF	A	5	



CS 8535

A 5 OF A 5

MAP OF
CENTER STREET
 FROM
 ANAHEIM TELEGRAPH ROAD
 TO
 EL CARMEL TRACT
 COUNTY SURVEYORS MAP NO. 8535

SCALE (Vert. 1" = 8 ft.
 Hor. 1" = 80 ft.)

J. E. ROCKHOLD — COUNTY SURVEYOR
 Surveyed January 1923

Bearings based on the bearing of Center St.
 as shown on map of El Carmel Tract (M.B. 7-134 & 6)

F.B. 47-112 to 117

Field Work by M. Henry
 Office Work by Schnitt
 Checked by Armstrong

W.S. '26

THIS MAP HAS BEEN SUPERSEDED BY C.S.