

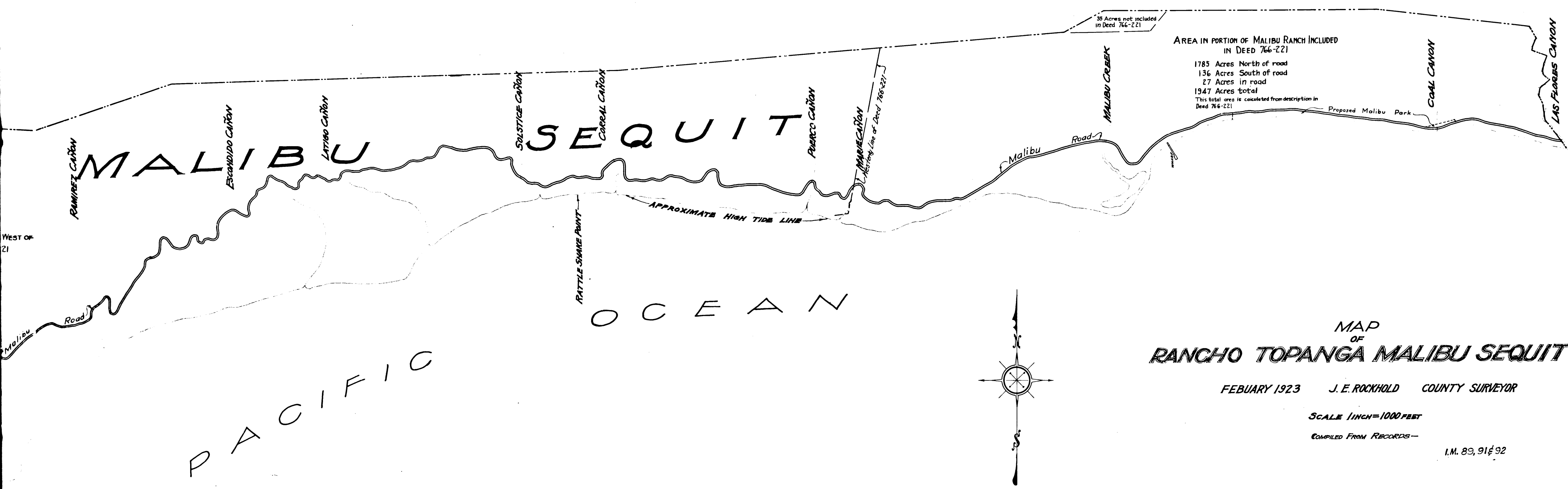
PACIFIC OCEAN

RANCHO TOPANGA MALIBU SEQUIT

AREA IN PORTION OF MALIBU RANCH WEST OF WEST LINE OF DEED 766-221
9145.00 Acres North of road
2067.88 Acres South of road
120.12 Acres in road
11333.00 Acres total

CS 8541
A1 OF A2

POINT DUME



AREA IN PORTION OF MALIBU RANCH INCLUDED
IN DEED 766-221

1785 Acres North of road
136 Acres South of road
27 Acres in road
1947 Acres total

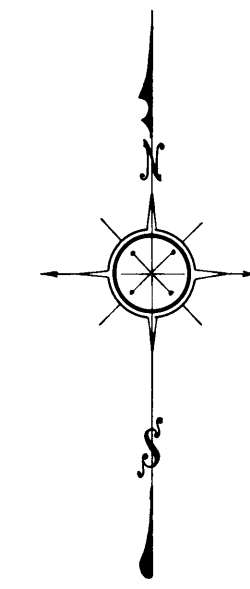
This total area is calculated from description in
Deed 766-221

MAP
OF
RANCHO TOPANGA MALIBU SEQUIT

FEBRUARY 1923 J. E. ROCKHOLD COUNTY SURVEYOR

SCALE 1 INCH = 1000 FEET
COMPILED FROM RECORDS -

I.M. 89, 91 & 92



CS	8541
A2	OF A2