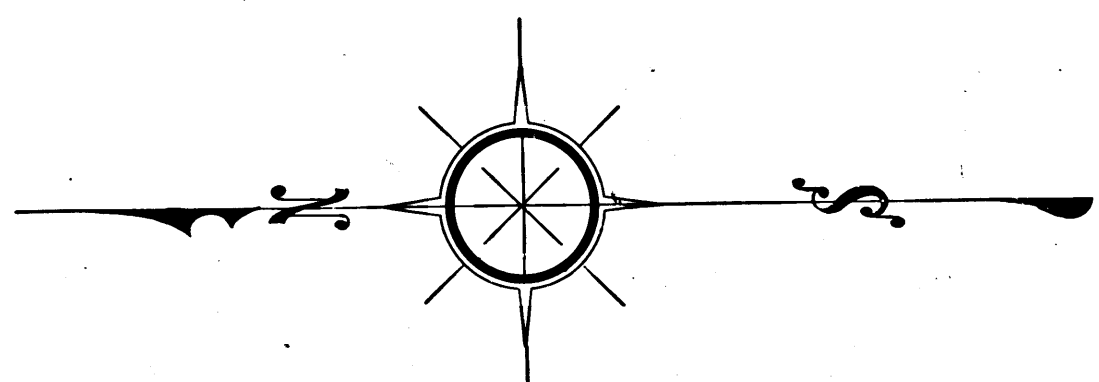
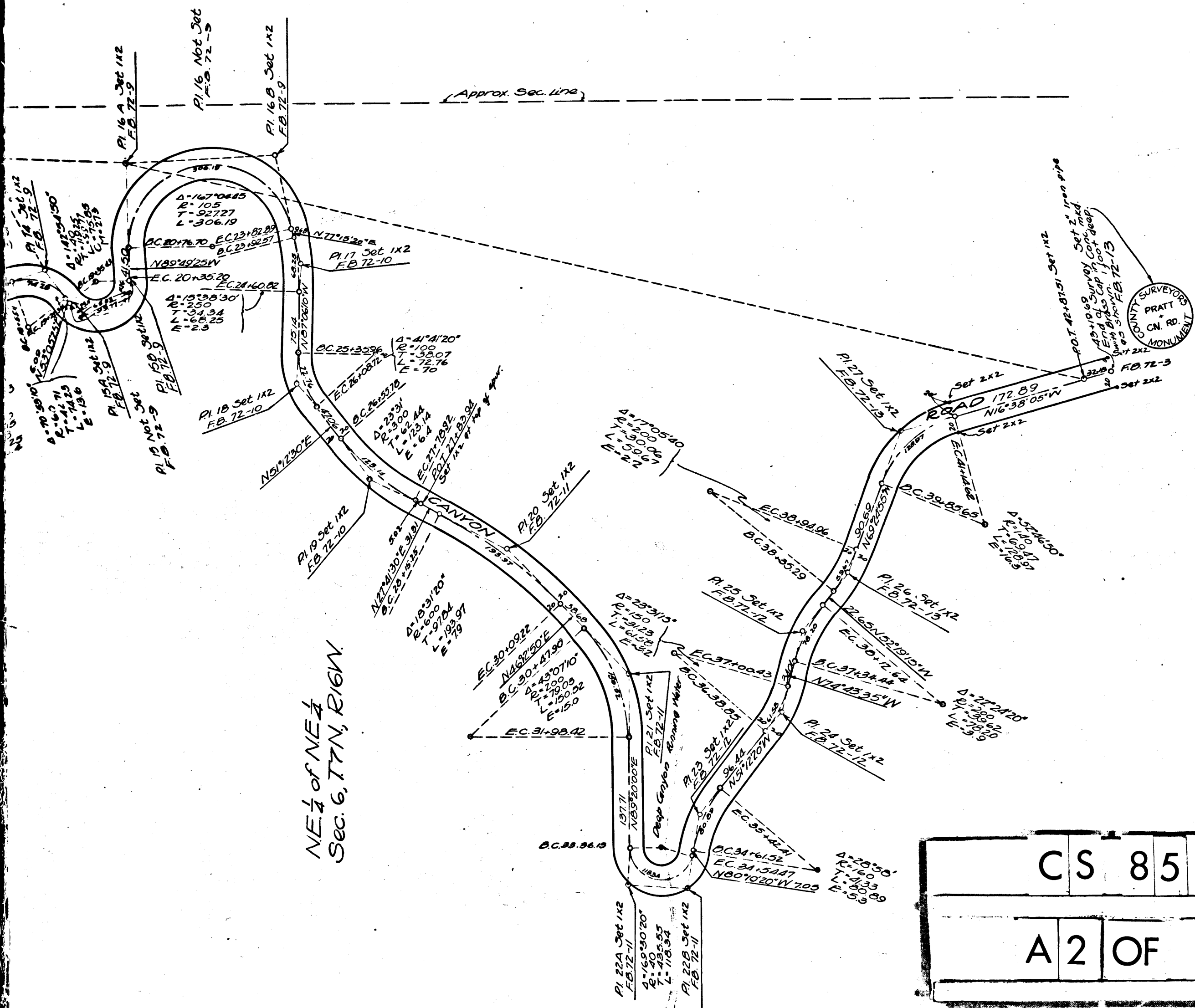




NW 1/4 of NW 1/4  
Sec. 5 T7N, R16W

NE 1/4 of NE 1/4  
Sec. 6, T7N, R16W



NOTE: This Road is not deeded.

# MAP OF PRATT CANYON ROAD

FROM OAKDALE CANYON ROAD TO PROPOSED TUBERCULOSIS CAMP SITE

COUNTY SURVEYORS MAP NO. 8553  
SCALE: 1-INCH = 100 FEET

J. E. Rockhold County Surveyor  
Surveyed April 1923.

Surveyed Under Instructions Of The Board Of Supervisors  
Per Order Dated October 5<sup>th</sup> 1922.  
Bearings Based On The Bearing Of Oakdale Canyon Road  
Per C. S. Map No 8166.

F. D. 72 - 3 to 15

Field Work by  
Office Work by  
Checked by  
Traced by  
Tracing Checked by

McHenry  
Bell  
Mckee  
Mckee  
Coon

C	S	8	5	5	3
A	2	OF	A	2	

I.M. 73