

S  
M.R. 26-47

Z  
S

E  
M.R. 52-9

No. 4568  
M.B. 54-48

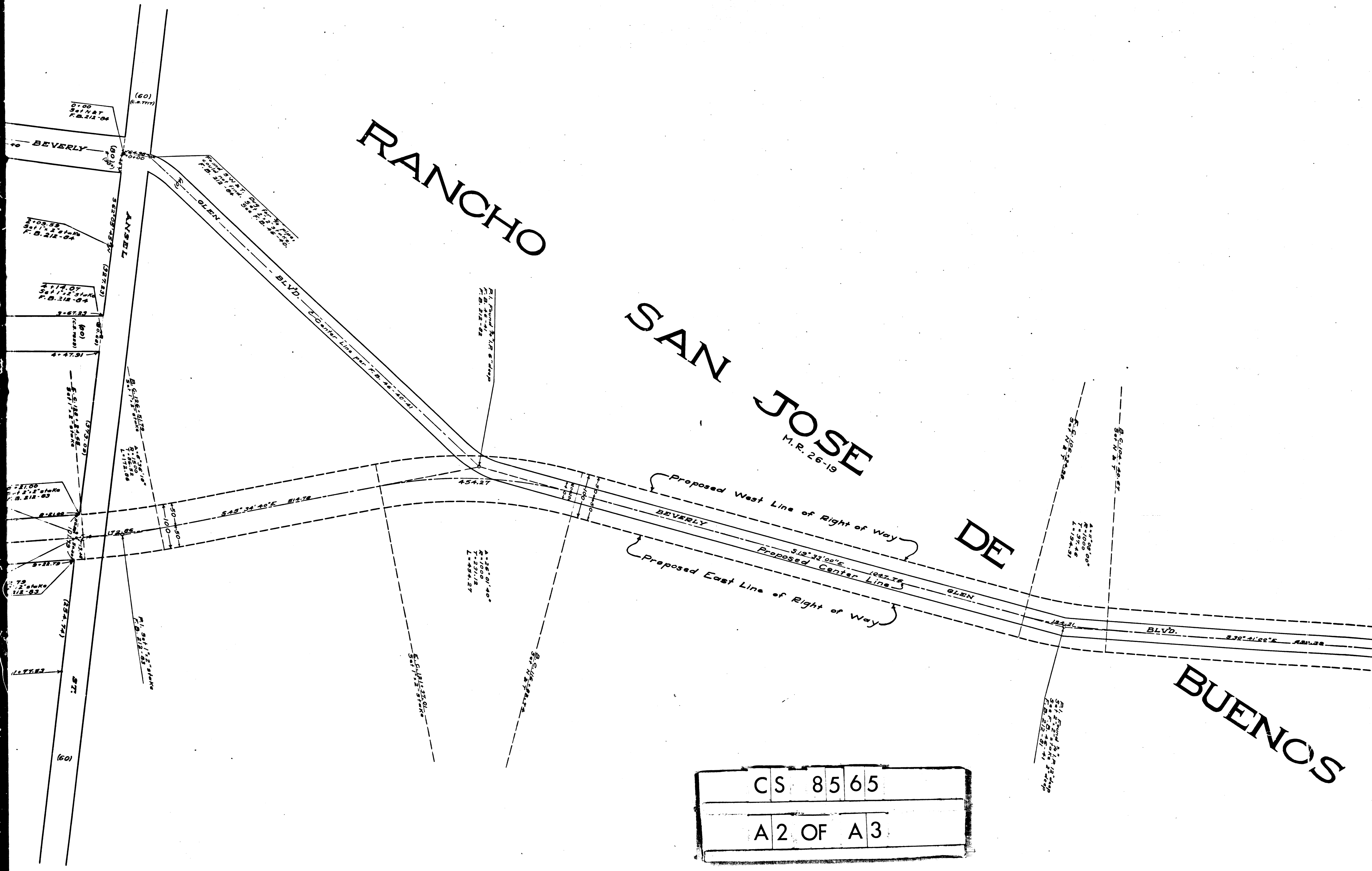
CS	85	65
A1	OF	A3

RANCHO

SAN JOSE  
M.R. 26-19

DE

BUENOS



CS	85	65
A2	OF	A3

# MAP OF LOS ANGELES FROM AVE.

WILSHIRE BOULEVARD TO BEVERLY BOULEVARD

COUNTY SURVEYOR'S MAP NO. 8565

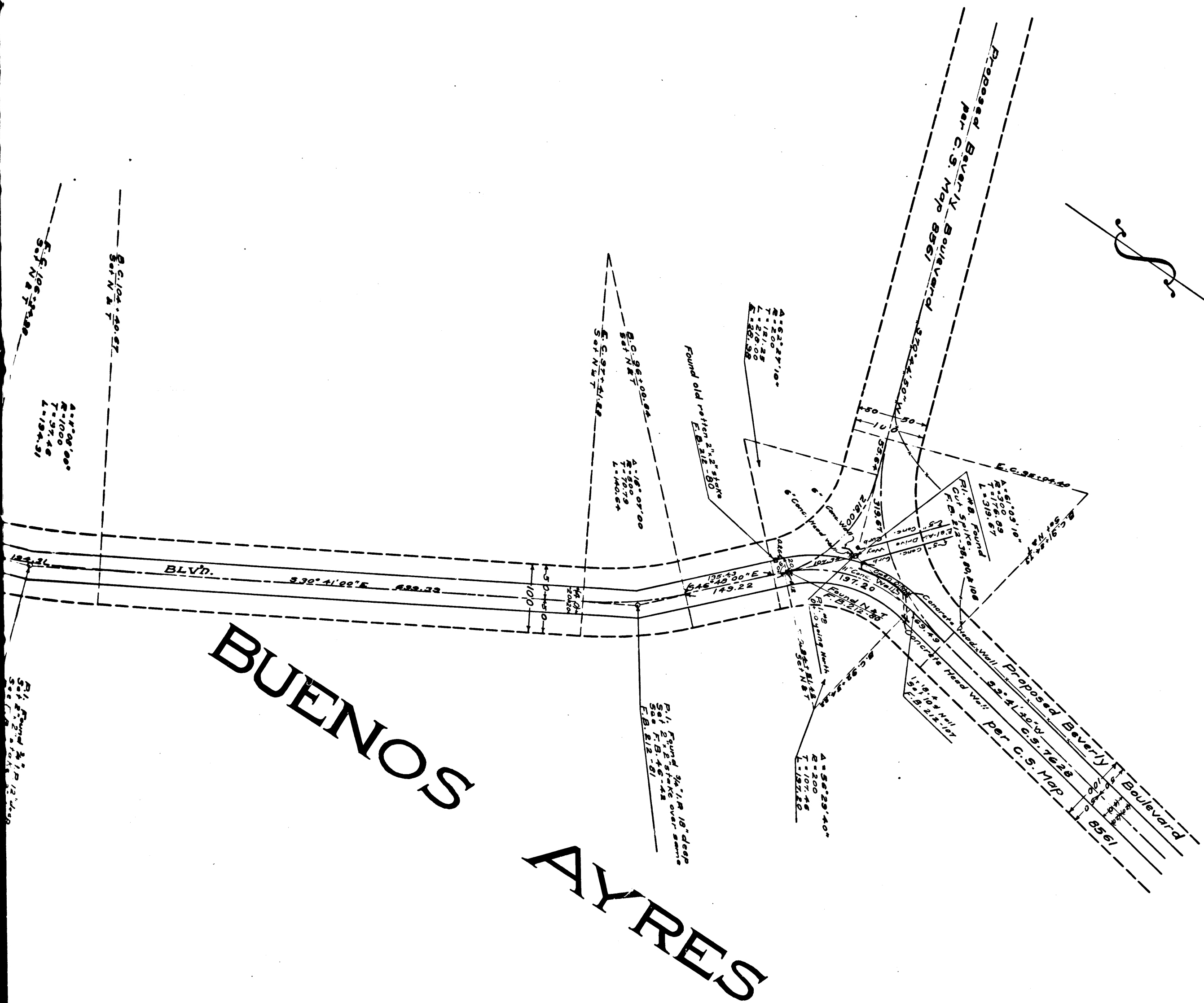
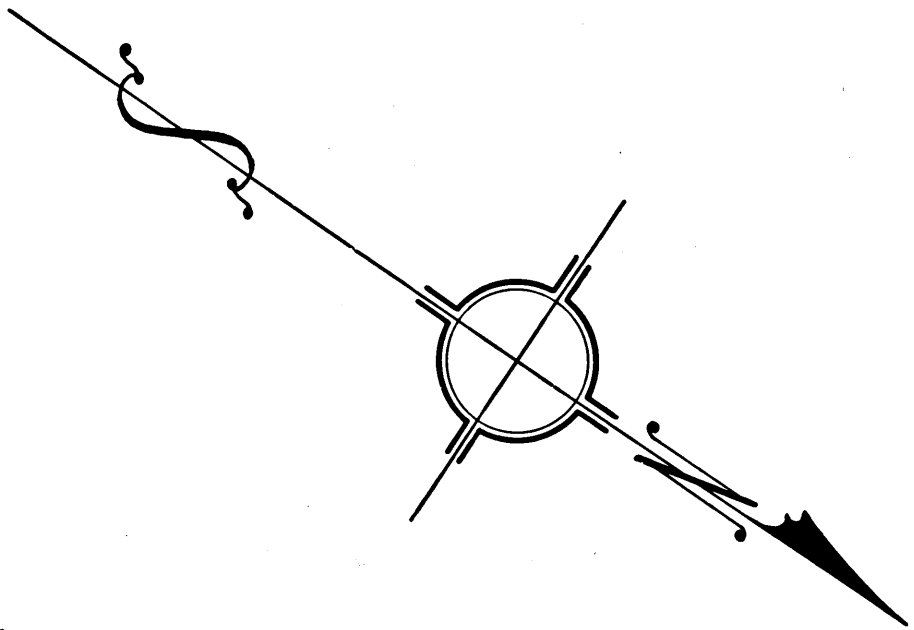
Scale 1 inch = 100 Feet

J. E. ROCKHOLD COUNTY SURVEYOR

Surveyed - May 1923

Surveyed as a connection with the Beverly Boulevard Survey  
ordered by the Board of Supervisors November 6, 1922  
Bearings based on bearing of Beverly Boulevard  
per C. S. Map No. 8561

F. B. 212 - 80 to 86  
Field Work by H. I. Comly  
Office Work by R. A. Overton  
Checked by G. R. Compton



C	S	8	5	6	5
A	3	O	F	A	3