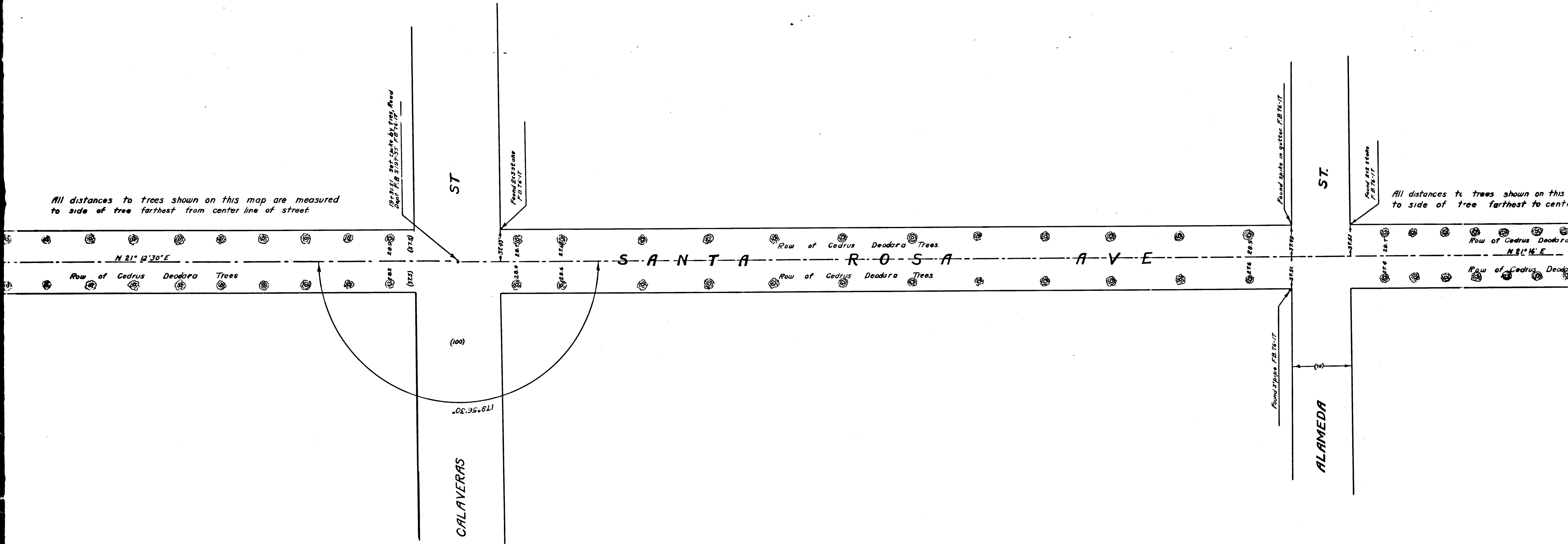


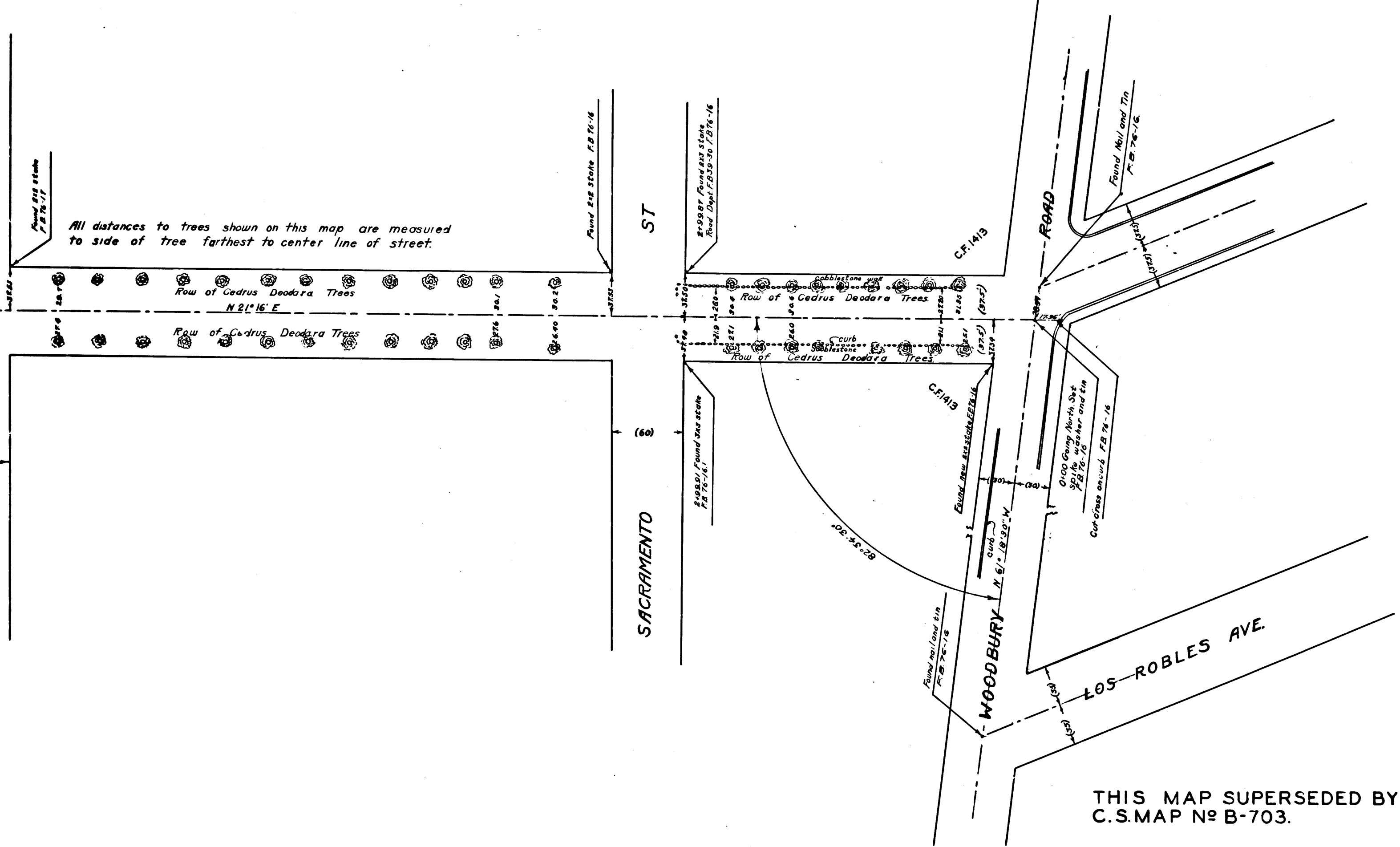
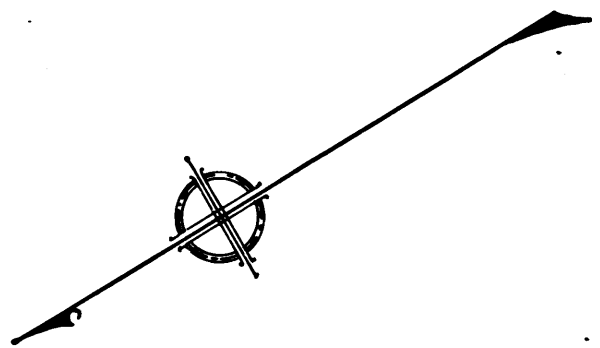
CS	85	89
A1	OF	A3

All distances to trees shown on this map are measured to side of tree farthest from center line of street.

All distances to trees shown on this map are measured to side of tree farthest from center line of street.



CS	85	89
A	2	OF A 3



MAP OF
SANTA ROSA AVENUE
FROM
WOODBURY ROAD TO PIEDMONT DRIVE

COUNTY SURVEYOR'S MAP No. 8589
Scale 1 inch = 50 Feet
J.E. ROCKHOLD COUNTY SURVEYOR

Surveyed under instructions of the Board of Supervisors
Per order dated November 19-1923. Bearings based on
bearing of Santa Rosa Avenue as shown on Santa Rosa
Heights Tract. Recorded in Map Book 9-130.

F.B. 76-16 TO 19

Field work by	Atkins
Office work by	Brook
Checked by	Taylor
	Sht. 50

THIS MAP SUPERSEDED BY
C.S. MAP No B-703.

CS 8589			
A 3	OF	A 3	