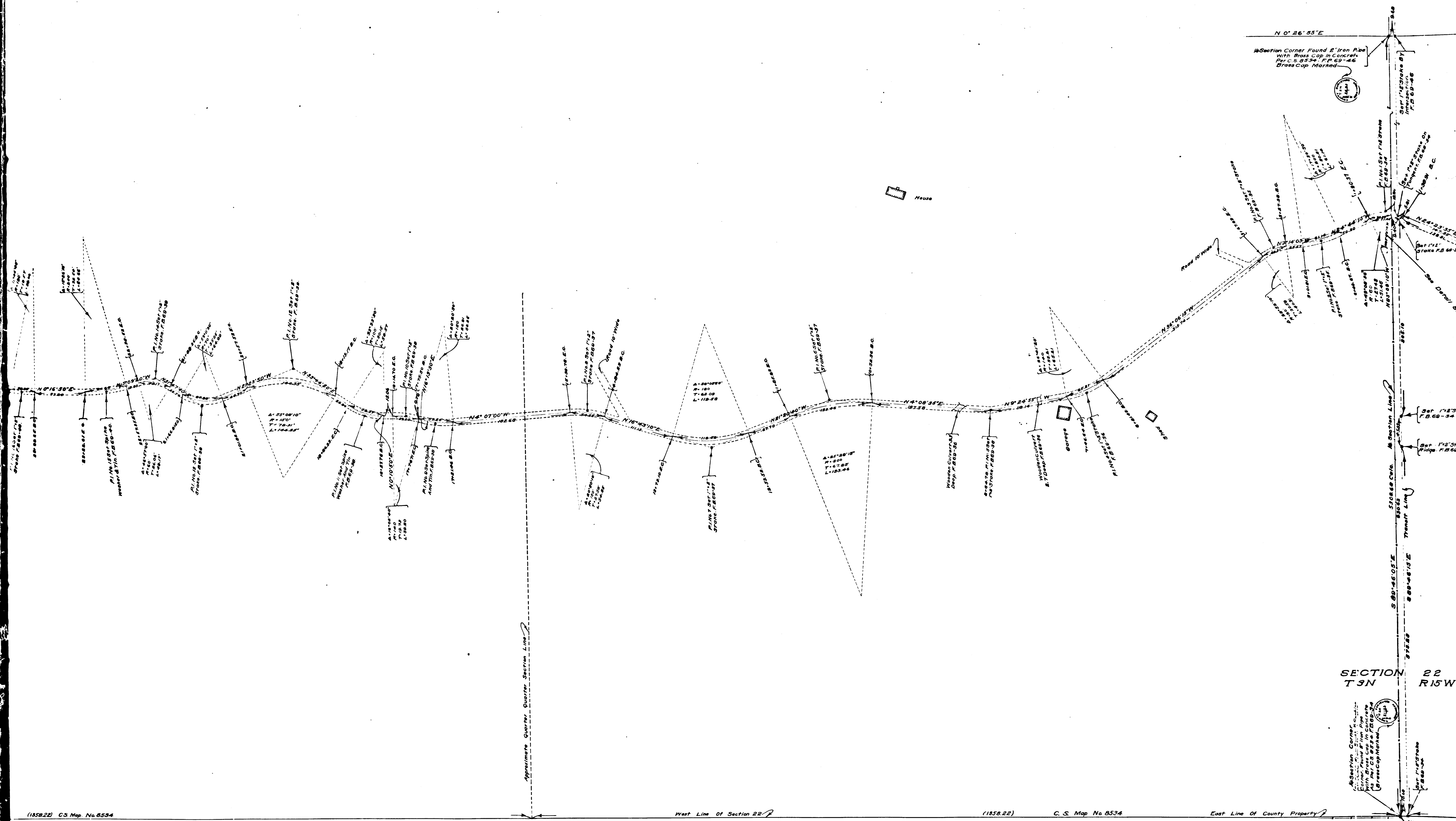


Approximate North Line Section 22  
 Section Corners, Piles, Pins With Brass  
 Section Corners, And Nails of Rock  
 C.S. Map. No. 8594 Brass Cap. Marked

(1859.22) C.S. Map. No. 8594

CS	8595
A1	OF A3

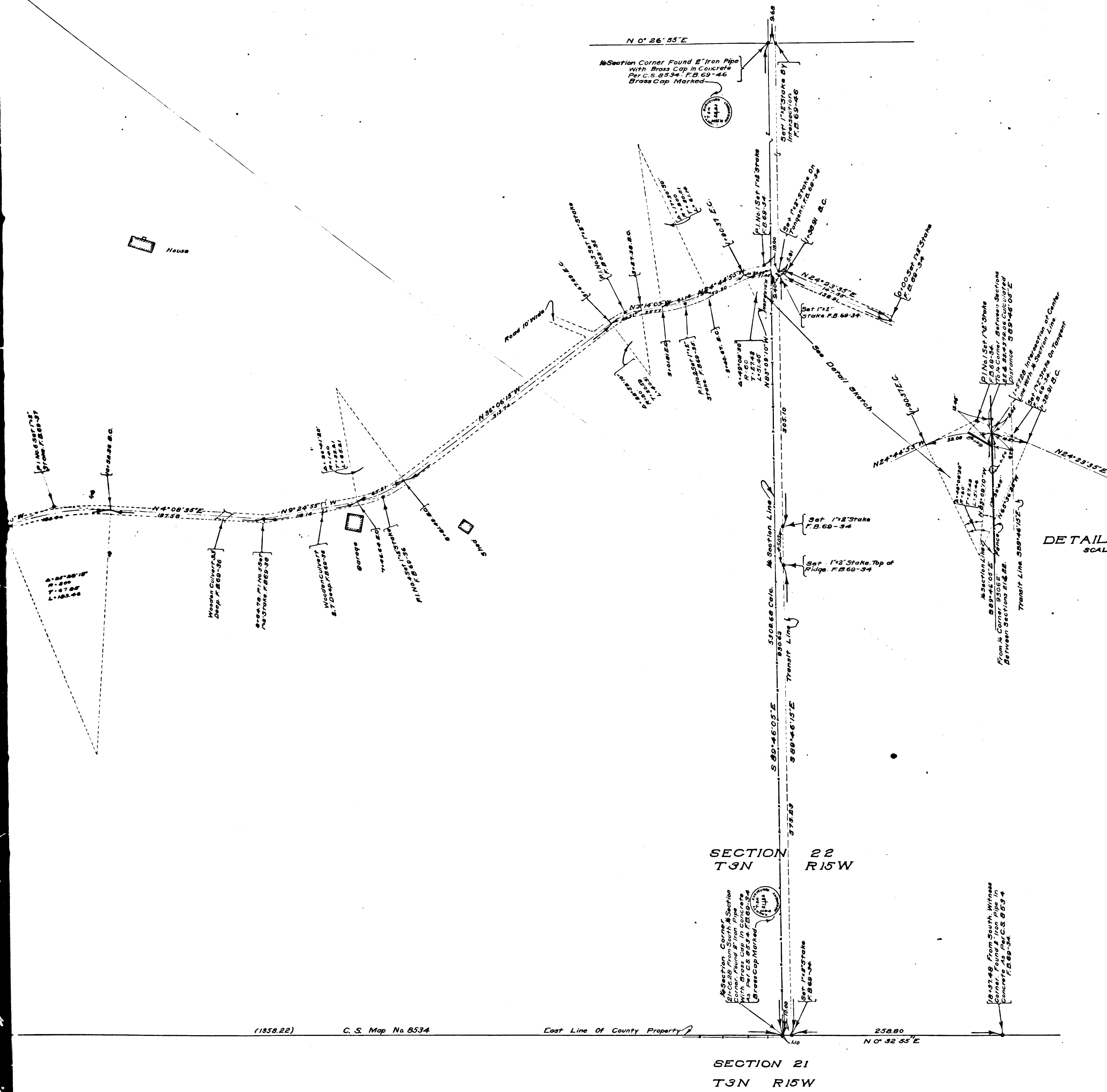


(1358.22) C.S. Map No. 8534      West Line of Section 22      (1358.22)      C.S. Map No. 8534      East Line of County Property

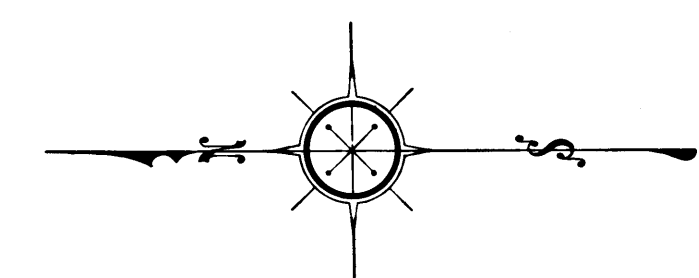
SECTION 22  
T3N R15W

SECTION 21  
T3N R15W

CS	8595
A2	OF A3



DETAIL SKETCH  
SCALE 1"=80'



MAP OF  
**WILSON CANYON ROAD**  
FROM  
SOUTH LINE OF N.W. 1/4 OF SEC. 22.  
TO  
NORTH LINE OF SECTION 22 T.3N..R.15W.

COUNTY SURVEYORS MAP No. 6595  
SCALE: 1-INCH=80 FEET.

J. E. ROCKHOLD COUNTY SURVEYOR  
SURVEYED FEBRUARY 1924.

Surveyed Under Instructions Of The Board Of  
Supervisors Per Order Dated February 4, 1924  
Bearings Based On The Bearing Of East Line Of  
Sec. 21 Per County Surveyors Map No. 6534.

FB 69-34 to 47  
Field Work By E.T. Mankey  
Office Work By E.J. Brock  
Checked By K.R. McPherson

I.M 234-137

CS	8595
A3	OF A3

(1958.22) C. S. Map No. 6534 East Line of County Property 258.80 N 0° 32' 55" E

SECTION 21  
T3N R15W

SECTION 22  
T3N R15W