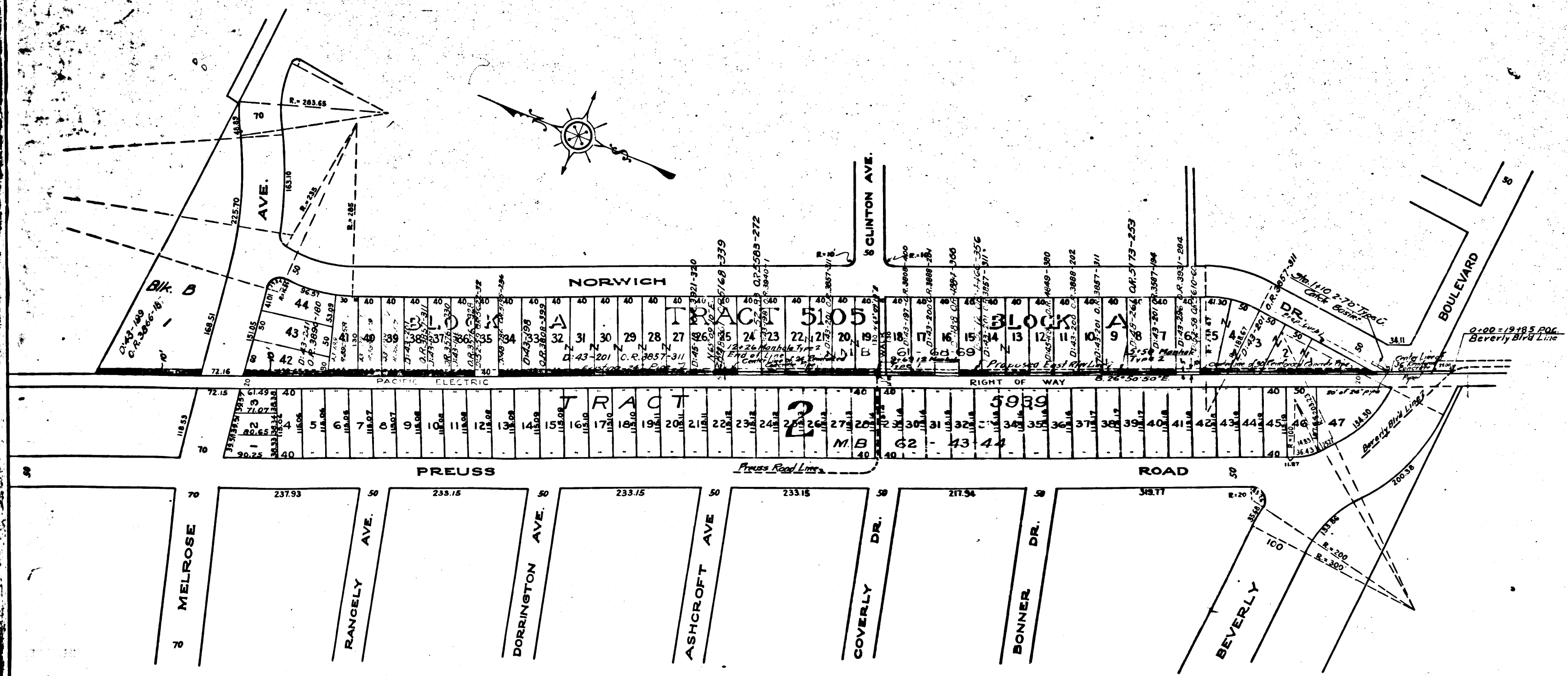
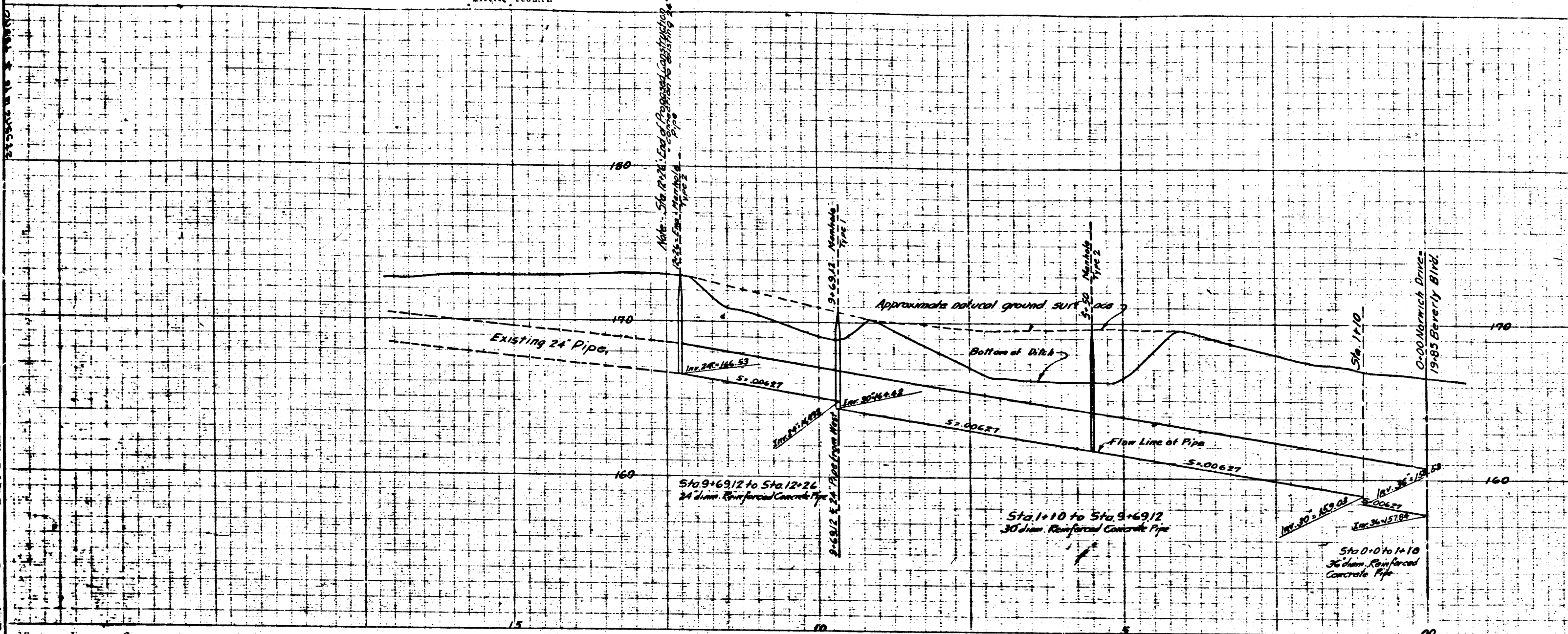


ENGINEER DIETZGEN C.
 CIVIL ENGINEER
 114 S. W. 10th St.
 LOS ANGELES, CALIF.

ENGINEER DIETZGEN C.
 CIVIL ENGINEER
 114 S. W. 10th St.
 LOS ANGELES, CALIF.



DRAINAGE DISTRICT IMPROVEMENT NO. 11.

OF THE
 COUNTY OF LOS ANGELES
 PLAN AND PROFILE OF
 NORWICH DRIVE - MELROSE AVE. LINE
 SCALES: VERT. - 1" = 4'
 HORIZ. - 1" = 100'
 OCTOBER 1924

SHEET 4 OF 21 SHEETS
 J. E. ROCKHOLD COUNTY SURVEYOR
 Submitted *alwarr* Approved *J. E. Rockhold*
 SENIOR ENGINEER COUNTY SURVEYOR

Approved as to form
 Edward T. Bishop
 County Counsel
 By *J. J. Renil*
 DEPUTY

5.22
 CS 8651 SHT. 4

Note: Elevations are in feet above U.S.G.S. or mean sea level datum.

D.D. I. NO. 1		
DRAWN	A. P. Collins	9-24-24
TRACED	J. J. Renil	9-25-24
CHECKED	<i>Renil</i>	11-24