

2360

2350

2340

2330

2320

0+00 ESPERANZA AVE.

GRAPE AVENUE

West property Line

Center Line

East property Line

1 2 3 4 5 6 7 8 9 10 11

11+44.39 9 TH ST.

+0.40%

15+41.53

+0.30%

SECTION STREET

East property Line

Center Line

West property Line

2360

2350

2340

2330

0+00 ESPERANZA AVE.

SECTION STREET

East property Line

West property Line

Center Line

1 2 3 4 5 6 7 8 9 10 11 12

6+06.37 8 TH ST.

12+70.97 9 TH ST.

15+44.91 PARK ST.

17+81.86 10 TH ST.

SYCAMORE AVENUE

2350

2340

2330

2320

0+00 ESPERANZA AVE.

SYCAMORE AVENUE

Center Line

+0.86%

+0.43%

+0.89%

+0.44%

+0.50%

1 2 3 4 5 6 7 8 9 10 11 12

5+27.45 8 TH ST.

12+70.97 9 TH ST.

15+44.91 PARK ST.

16+76.79 10 TH ST.

2350

2340

0+00 ESPERANZA AVE.

YUCCA AVENUE

Center Line

+0.66%

+0.90%

+1.10%

+0.30%

1 2 3 4 5 6 7 8 9 10 11 12 13 14 15 16 17 18 19 20 21 22 23 24

6+19.53 8 TH ST.

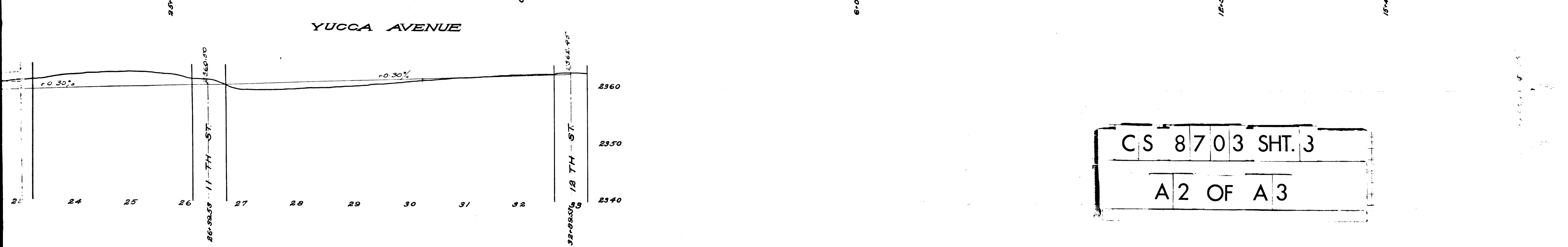
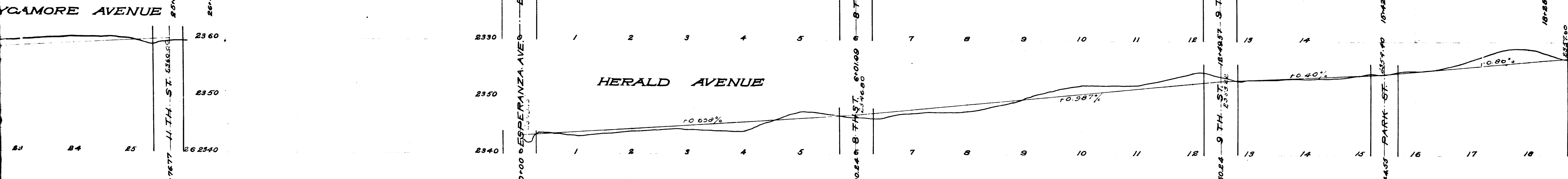
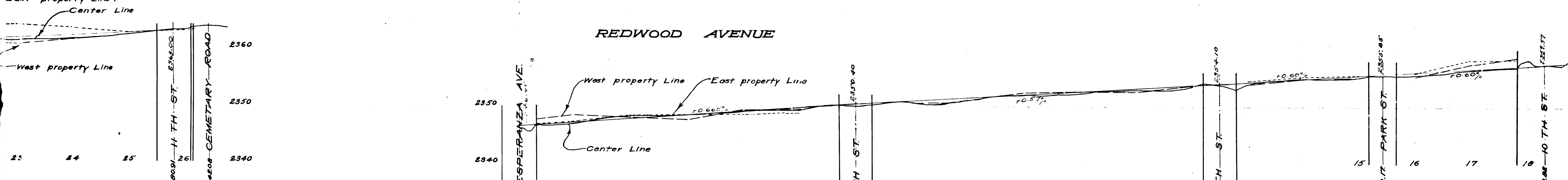
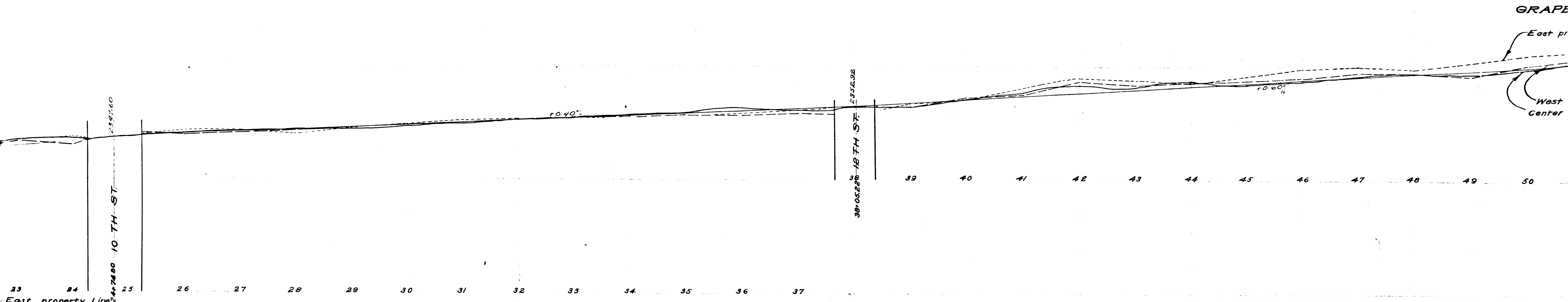
12+98.53 9 TH ST.

16+359.37 10 TH ST.

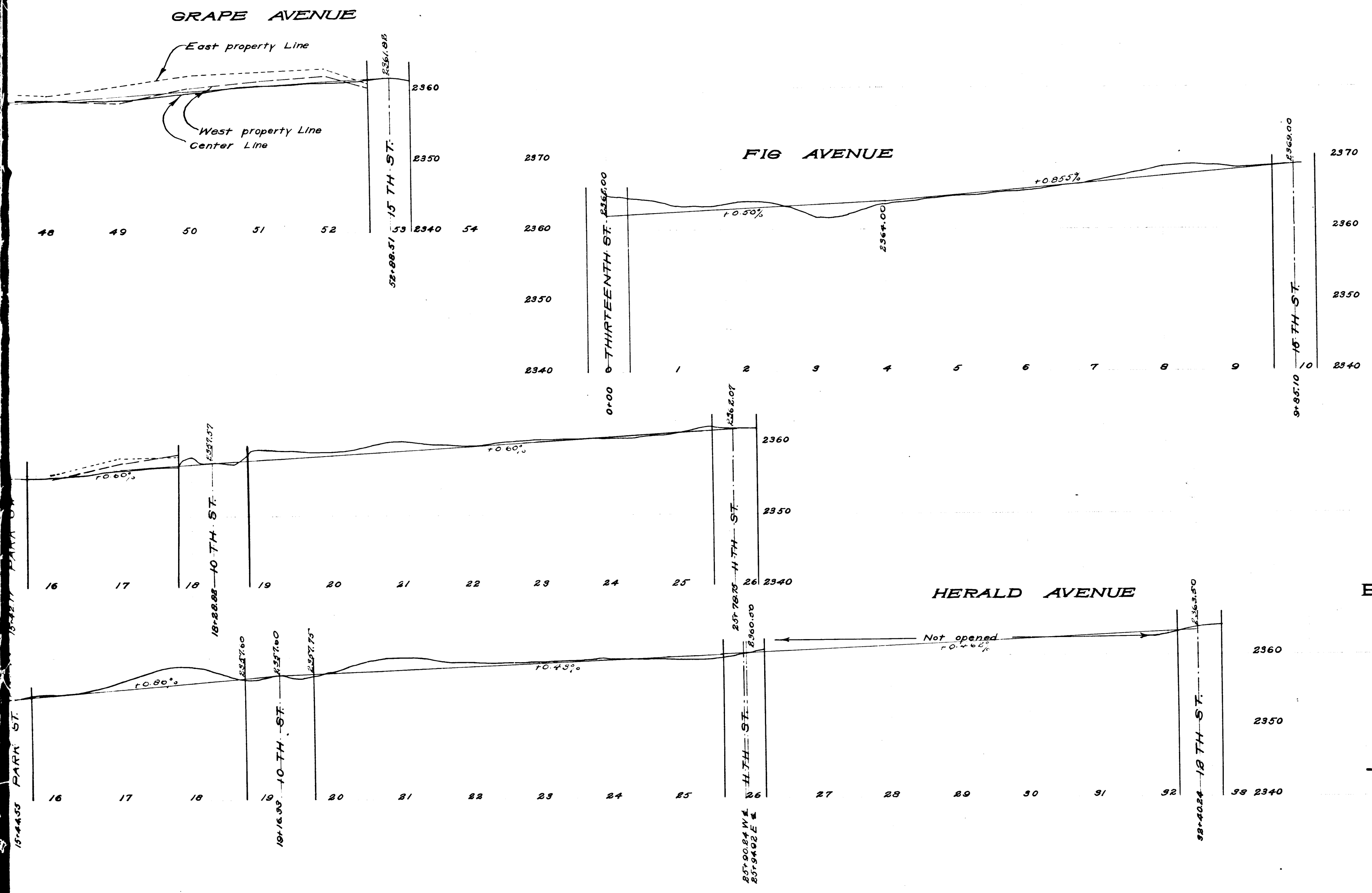
16+559.64

CS 8703 SHT. 3

A 1 OF A 3



CS 8703 SHT. 3
A 2 OF A 3



PROFILE SHOWING
 ESTABLISHED CURB GRADES
 ON
 SYCAMORE, FIG, REDWOOD,
 HERALD, YUCCA AND
 GRAPE AVENUES
 AND
 SECTION STREET
 IN
 TOWN OF LANCASTER

COUNTY SURVEYORS MAP No. 8703 SHT. 3
 SCALES HOR. 1: INCH = 80 FEET
 VER. 1: INCH = 8 FEET

J. E. ROCKHOLD COUNTY SURVEYOR
 SURVEYED JUNE AND JULY 1922

Surveyed Under Instructions Of The Board Of
 Supervisors Per Order Dated October 2, 1922.

L.B. 118, 120 & 121.
 Field Work By J.R. McHenry
 Office Work By Morrison & Brook
 Checked By Irwin & Brook

Note: For Established Curb Grades See Sheet 1.

Sht. 16

CS	8	7	0	3	SHT.	3
A 3 OF A 3						