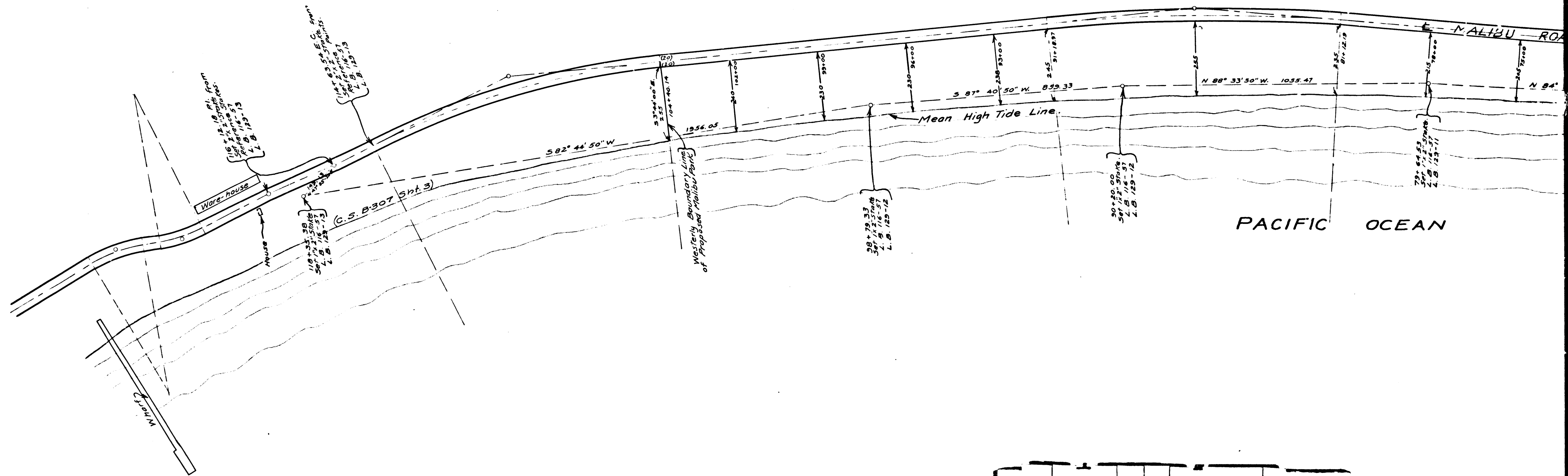
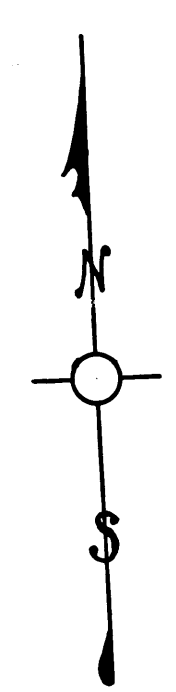
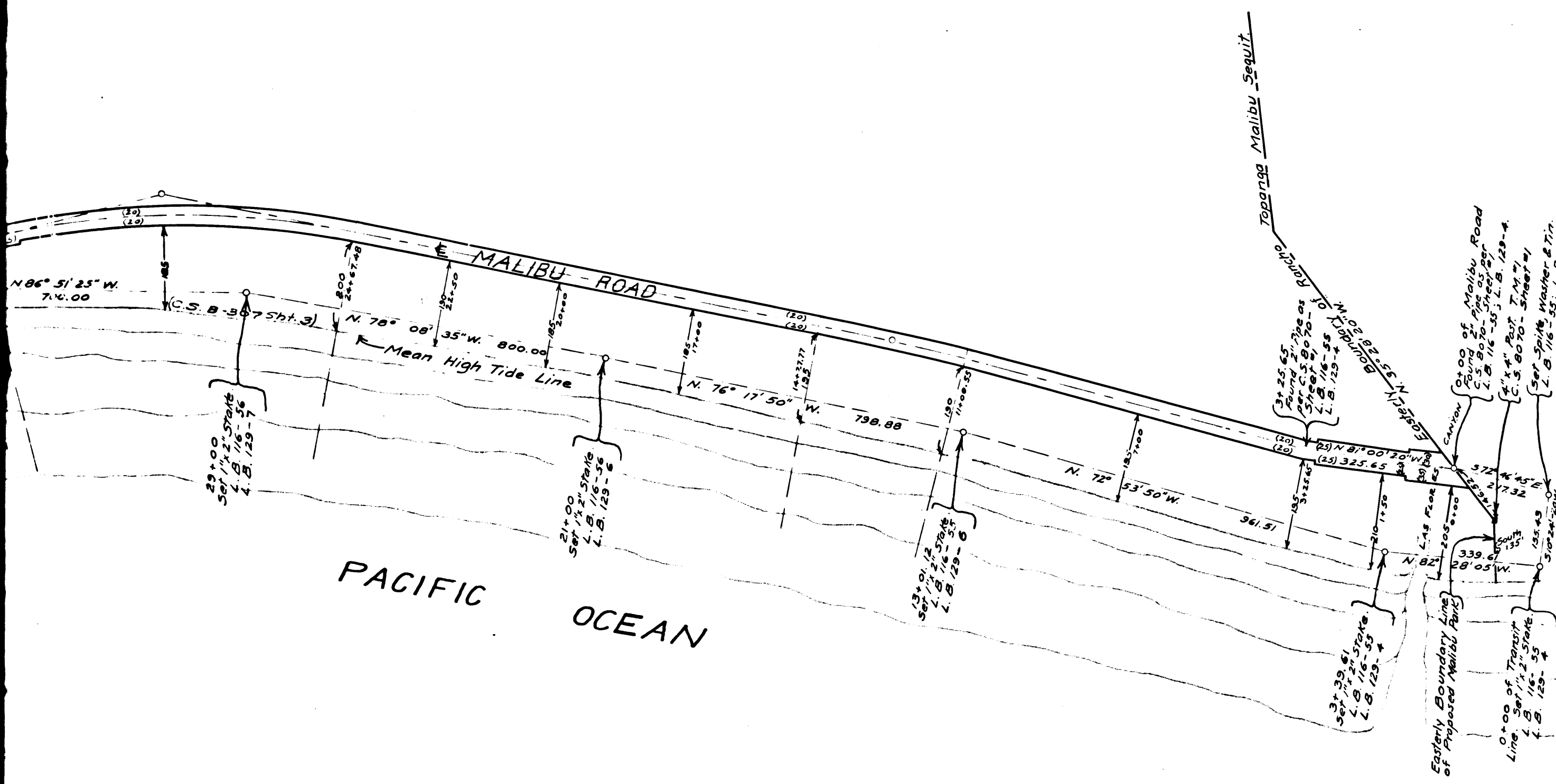


RANCO



CS	8	7	0	4	SHT.	1
A 1 OF A 3						



MAP SHOWING
LAND TO BE ACQUIRED
 FOR
PUBLIC PARK
 LYING BETWEEN MALIBU ROAD
 AND THE PACIFIC OCEAN
 WEST FROM LAS FLORES CANYON

J.E. ROCKHOLD COUNTY SURVEYOR
 SCALE: 1-INCH = 200 FEET.
 APRIL: 1924.

L.B. 116-55 to 57 & L.B. 129-4 to 13
 Field Work By H. I. Comly.
 Office Work By K. R. McPherson.
 Checked By R. R. Taylor.

I.M. 89

CS	8704	SHT. 1
A 3 OF A 3		

Sht. 59