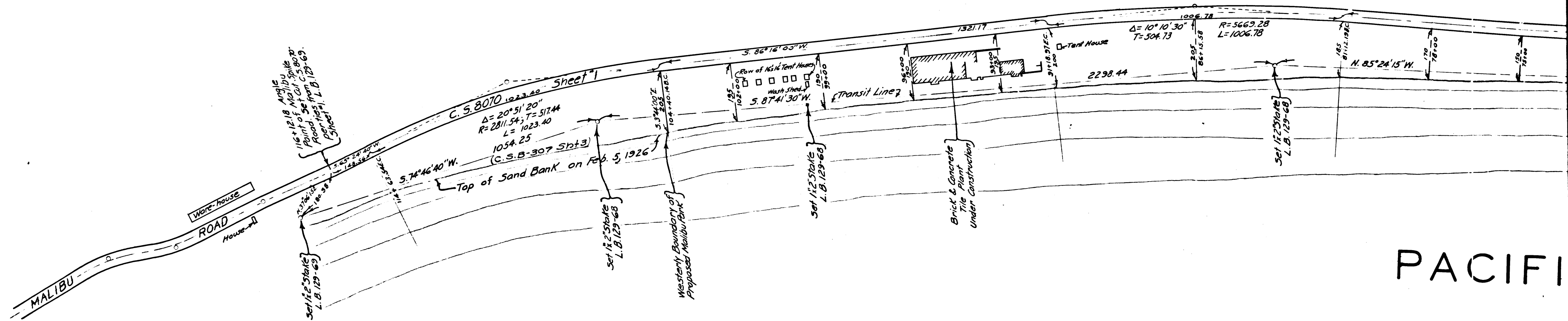


RANCHO

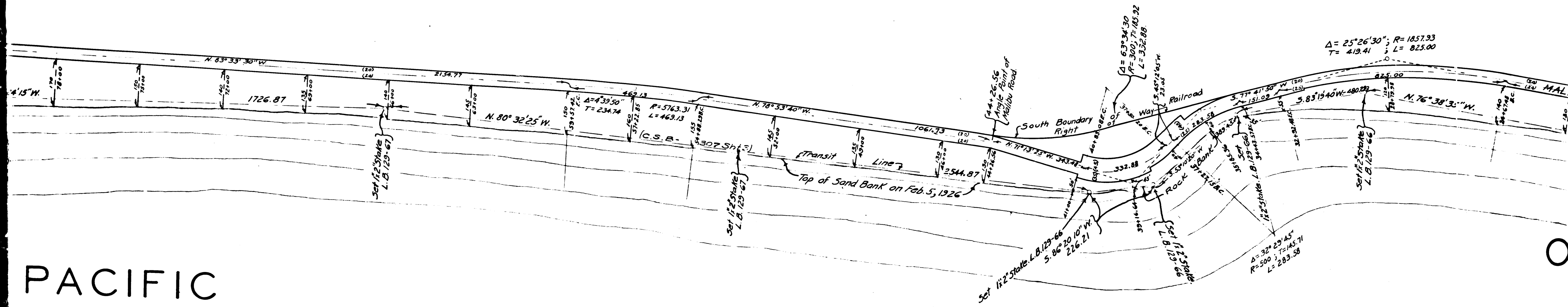


PACIFI

CS	8	7	0	4	SHT.	2
A1		OF		A3		

TOPANGA

MALIBU

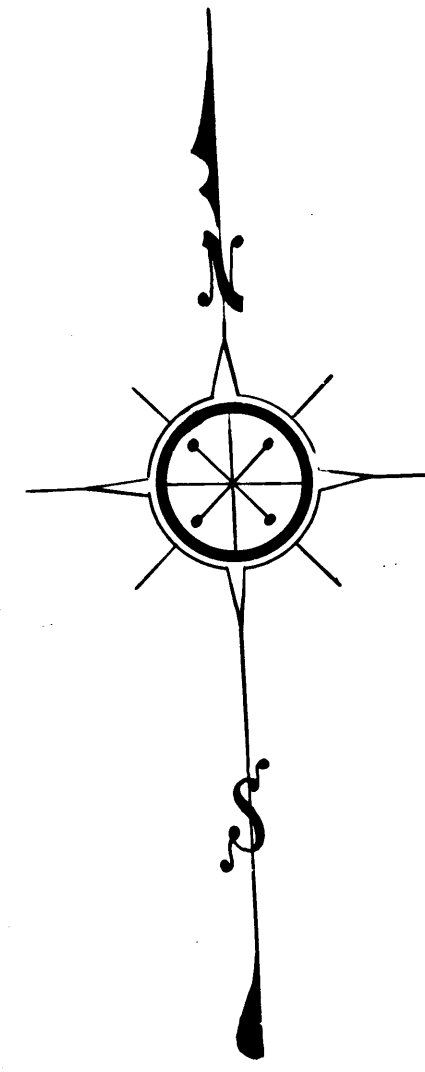
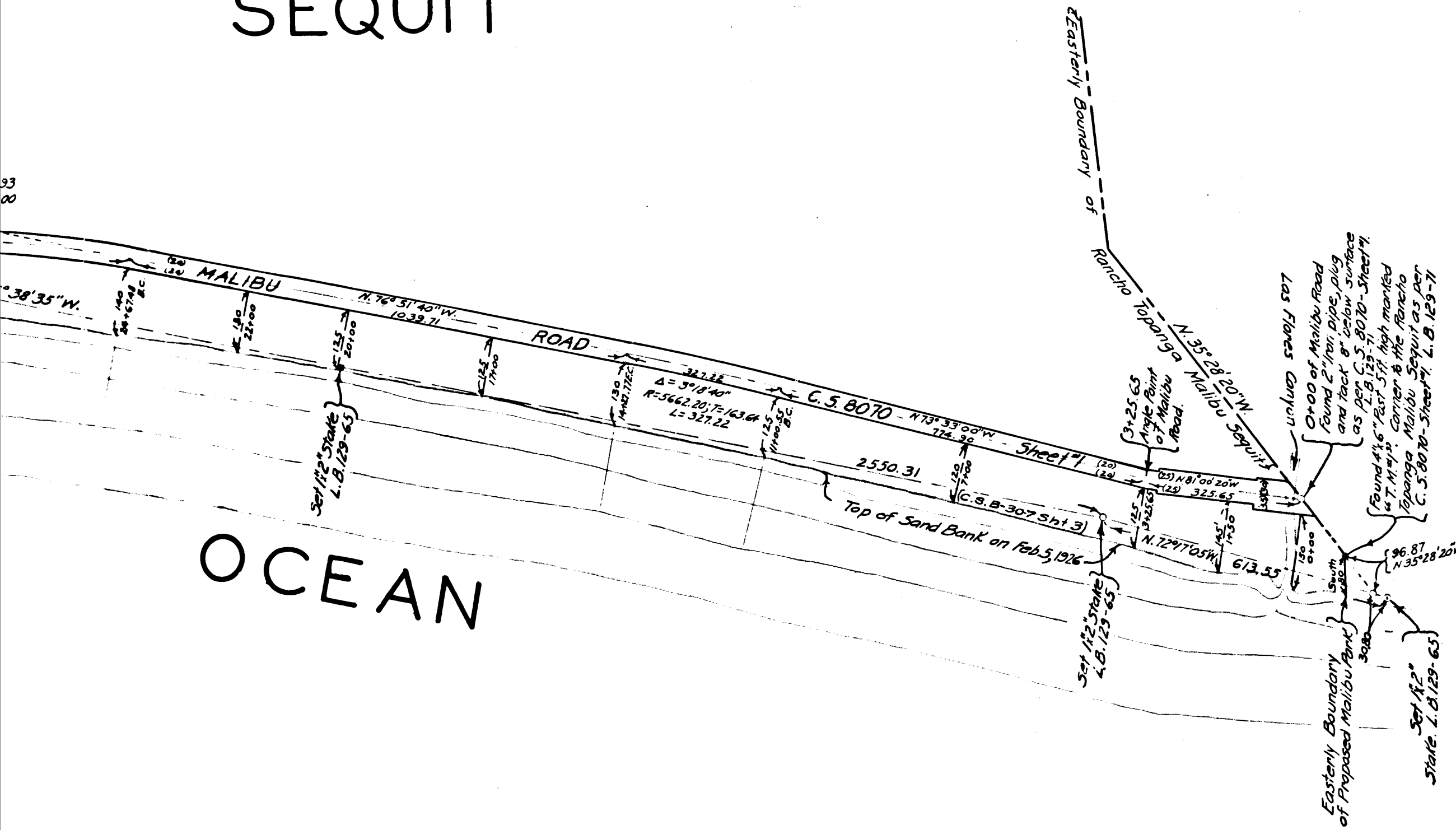


PACIFIC

C	S	8	7	0	4	SHT.	2
A 2 OF A 3							

SEQUIT

OCEAN



MAP SHOWING  
**LAND TO BE ACQUIRED**  
 FOR  
**PUBLIC PARK**  
 LYING BETWEEN MALIBU ROAD  
 AND THE PACIFIC OCEAN  
 WEST FROM LAS FLORES CANYON

**J.E. ROCKHOLD COUNTY SURVEYOR**  
 SCALE: 1-INCH=200 FEET  
 SURVEYED FEBRUARY 1926

Level Book 129 - Pages 65 to 71.  
 Field Work By E. T. Mankey  
 Office Work By K. R. McPherson  
 Checked By R. B. Emmatt

**LEGEND**  
 The line designated here-on as "Top of Sand Bank on Feb. 5, 1926" is the top of an approximately vertical bank caused by the washing of the waves.

L.M.89

CS	8	7	0	4	SHT.	2
A		3	OF		A	
A		3	OF		A	