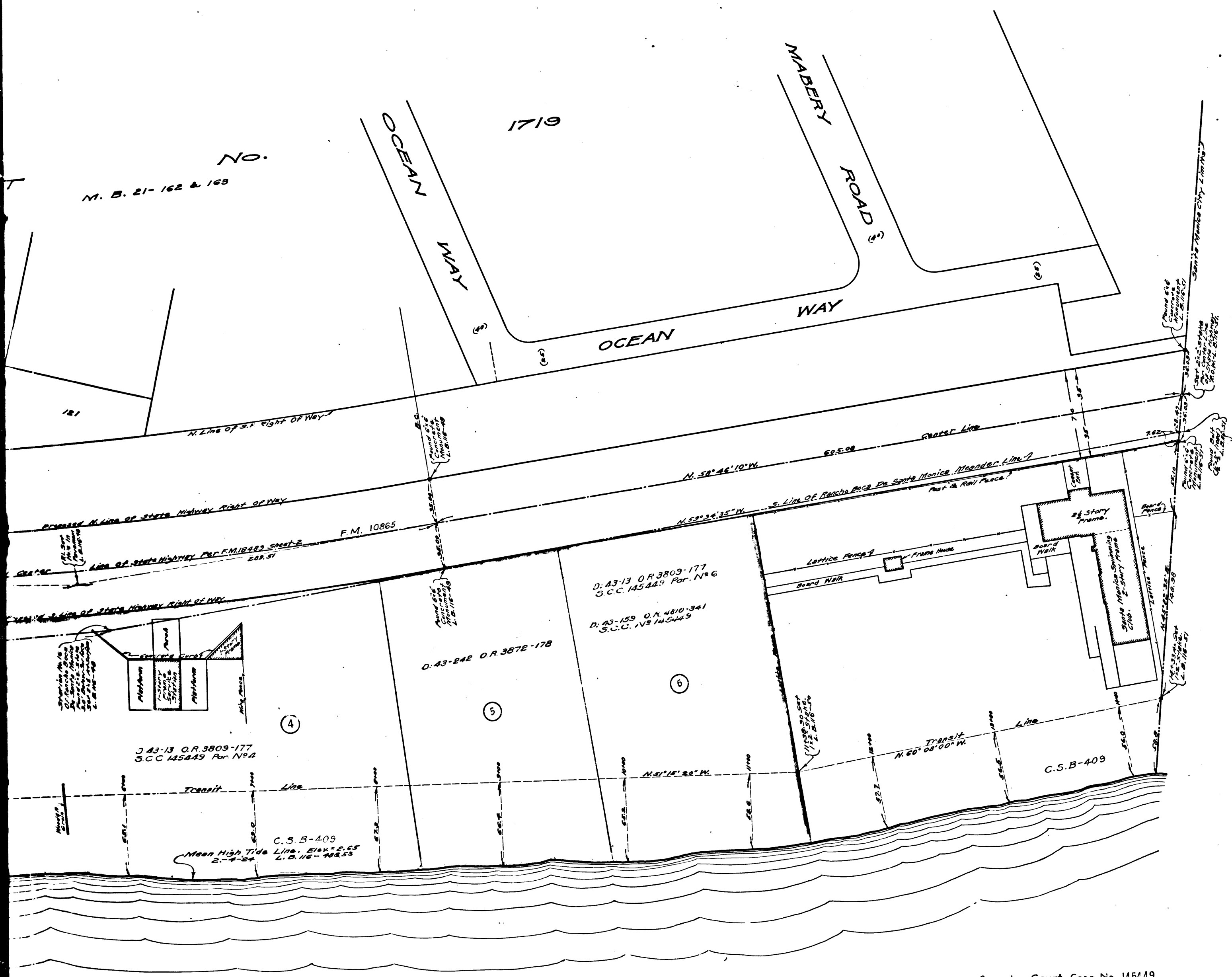


TRACT No. M. B. 21-162 & 163

1719

CS 8726	
A1	OF A2



MAP SHOWING
LAND TO BE CONDEMNED
 FOR
 PUBLIC PARK AND PLEASURE
 GROUND PURPOSES
 AT
 MOUTH OF SANTA MONICA CANYON
 J.E. ROCKHOLD COUNTY SURVEYOR
 SCALE: 1 INCH = 40 FEET
 MARCH 1924

Superior Court Case No. 145449
 Suit for Condemnation
 Filed June 9, 1924
 County of Los Angeles, Pliff
 Vs.
 California Trust Co, et al. Def.

Interlocutory decree rendered Dec. 3, 1924
 Final Judgment in favor of Pliff, as to
 Parcels 1, 2, 3, 4 & 6, rendered Dec. 9, 1924.

D: 43-13 O.R. 3809-177
 D: 43-159 O.R. 4810-341
 Parcel 5 deeded. D: 43-242 O.R. 3872-178

LB. 116 45 TO 54.
 Field Work By H. I. Comly
 Office Work By F. M. Coon
 Checked By K. R. McPherson

Shit. 58

CS 8726
 A 2 OF A 2

PACIFIC OCEAN