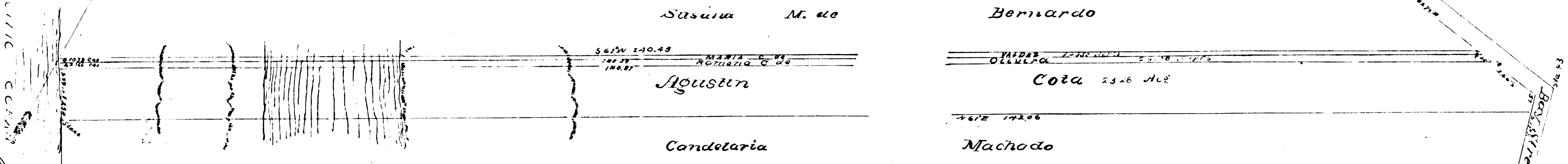


LOT 5

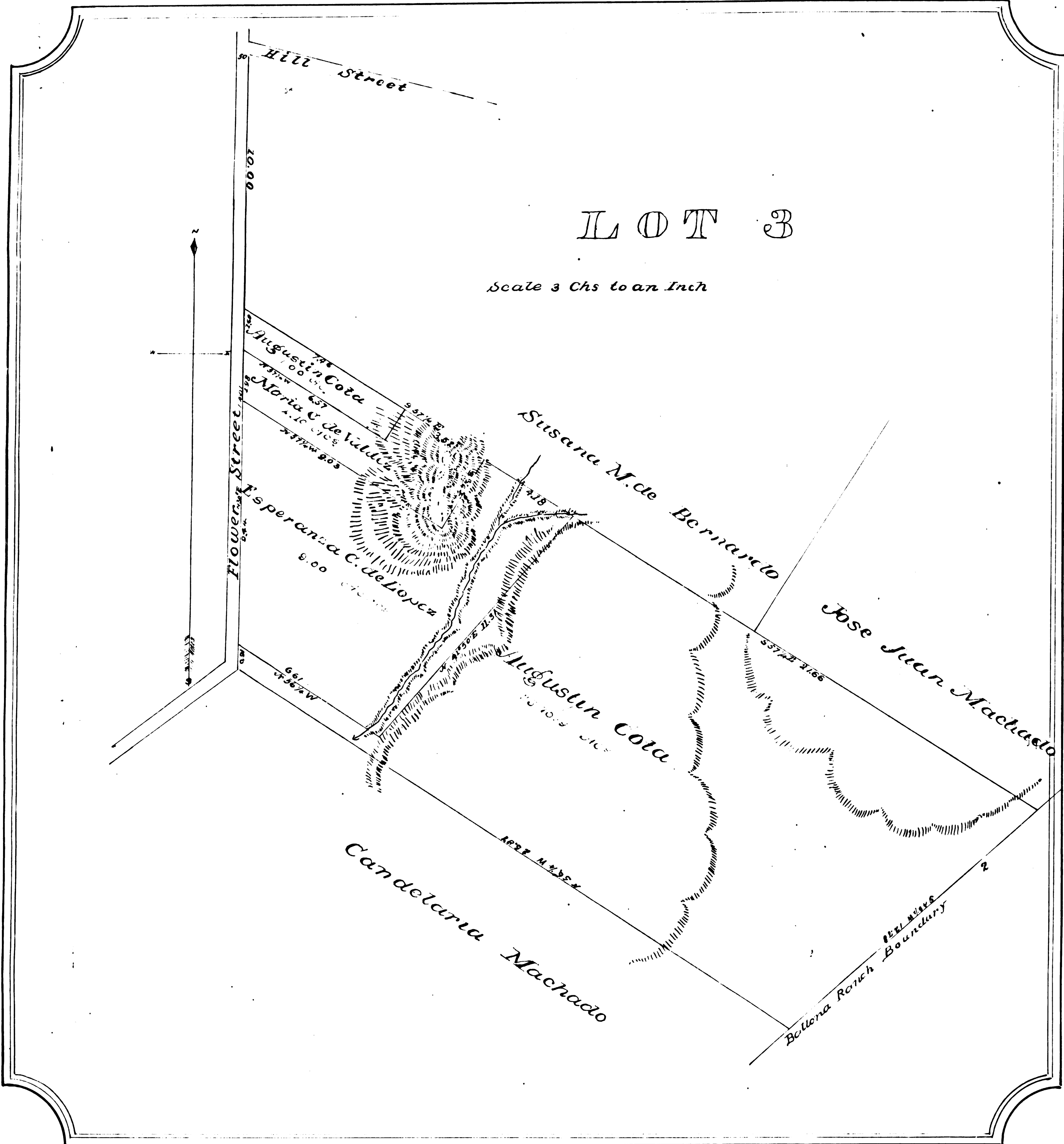
Scale 3 Chs to an Inch

Vol. 1430 21



LOT 3

Scale 3 Chs to an Inch



MAP

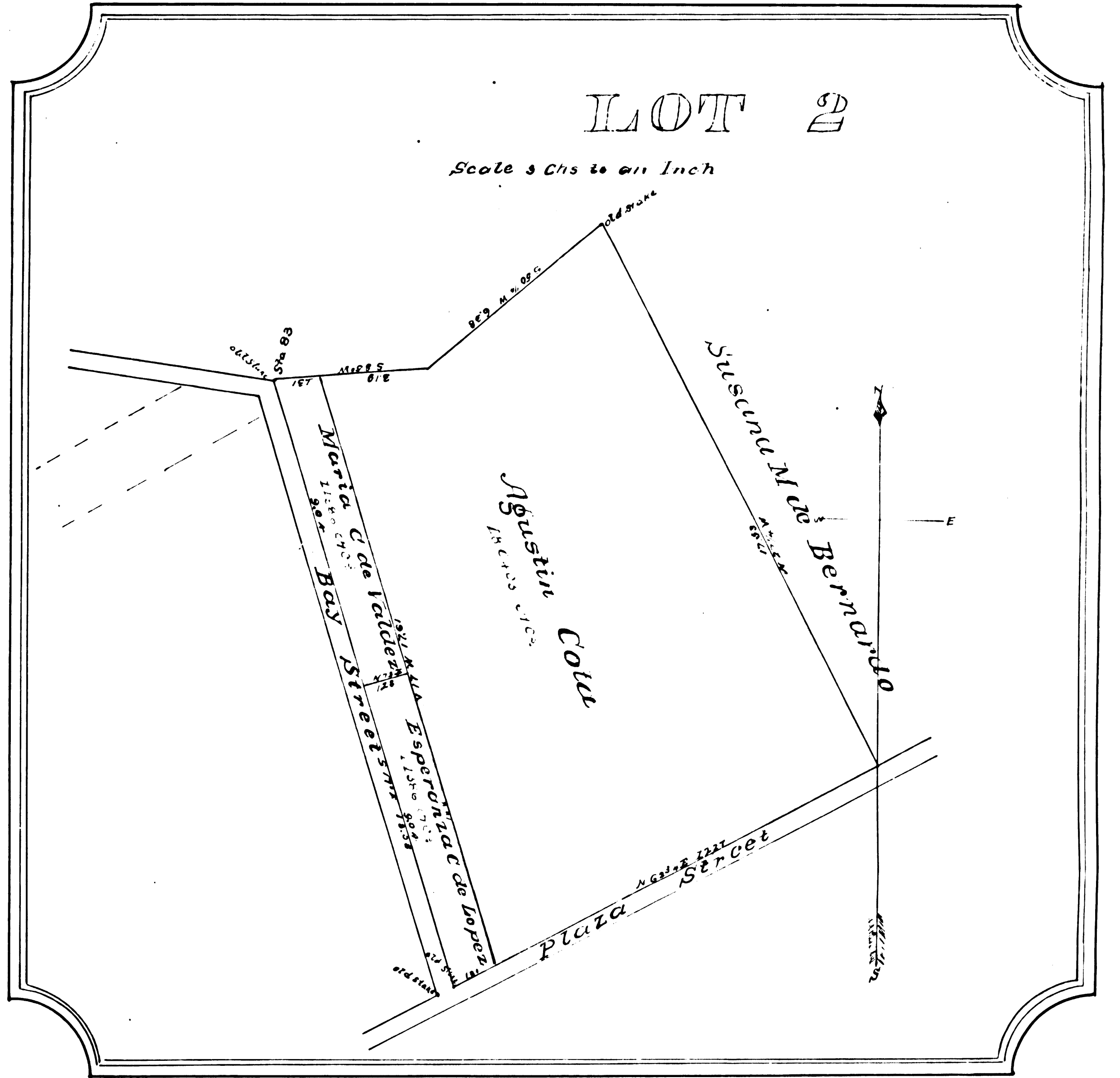
Showing those parts of the

RANCHO LA BALLONA

in the Suit of Agustín Cota vs Erolinda C. de Yorba et al in the Superior Court of Los Angeles Co. State of California Case No 3630 according to the Allotment made by M. F. Coronel appointed Solo Referee in Decree of Partition Surveyed in March A.D. 1897 by J. S. Bernal Sur. & C.E.

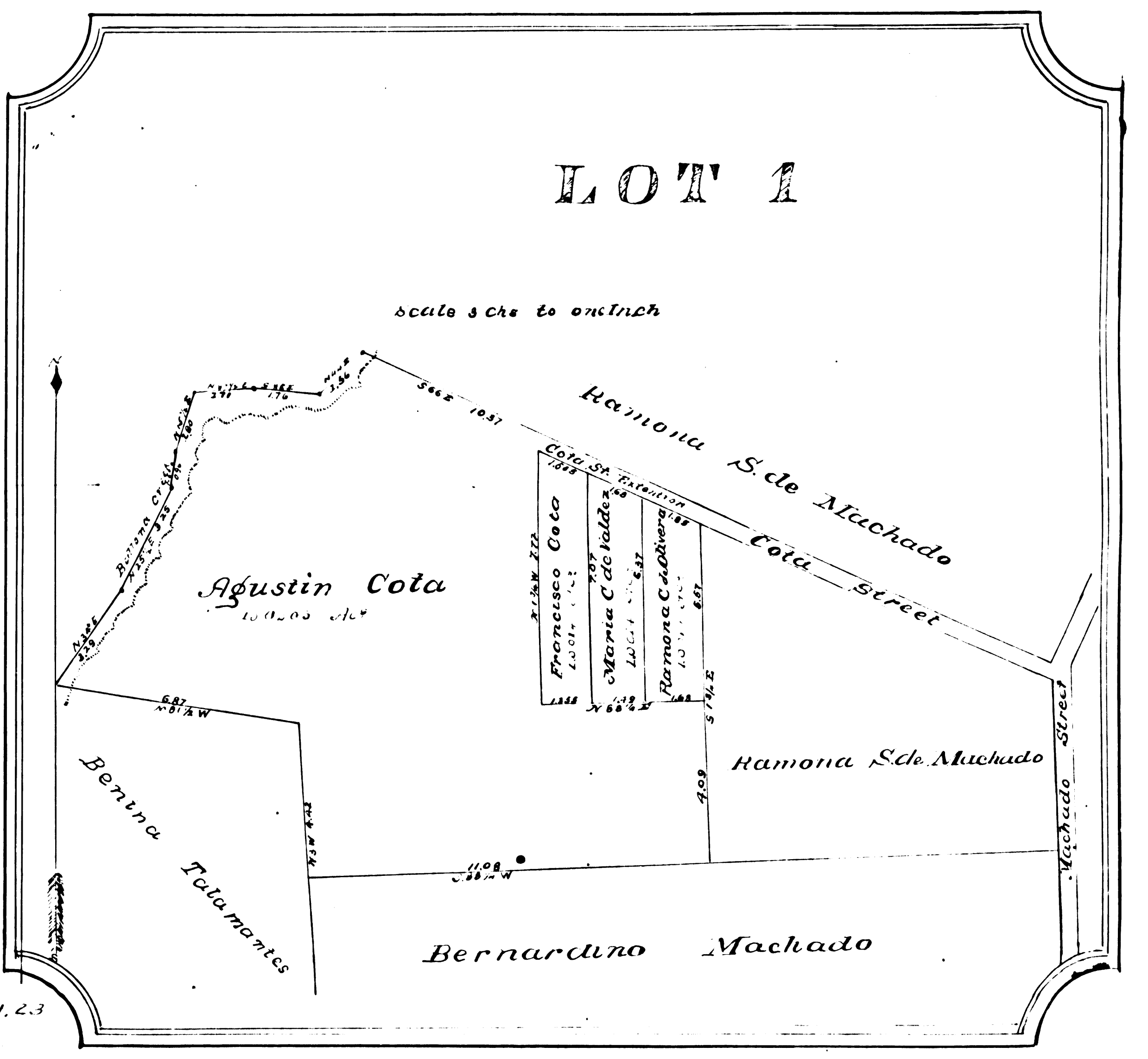
LOT 2

Scale 3 Chs to an Inch



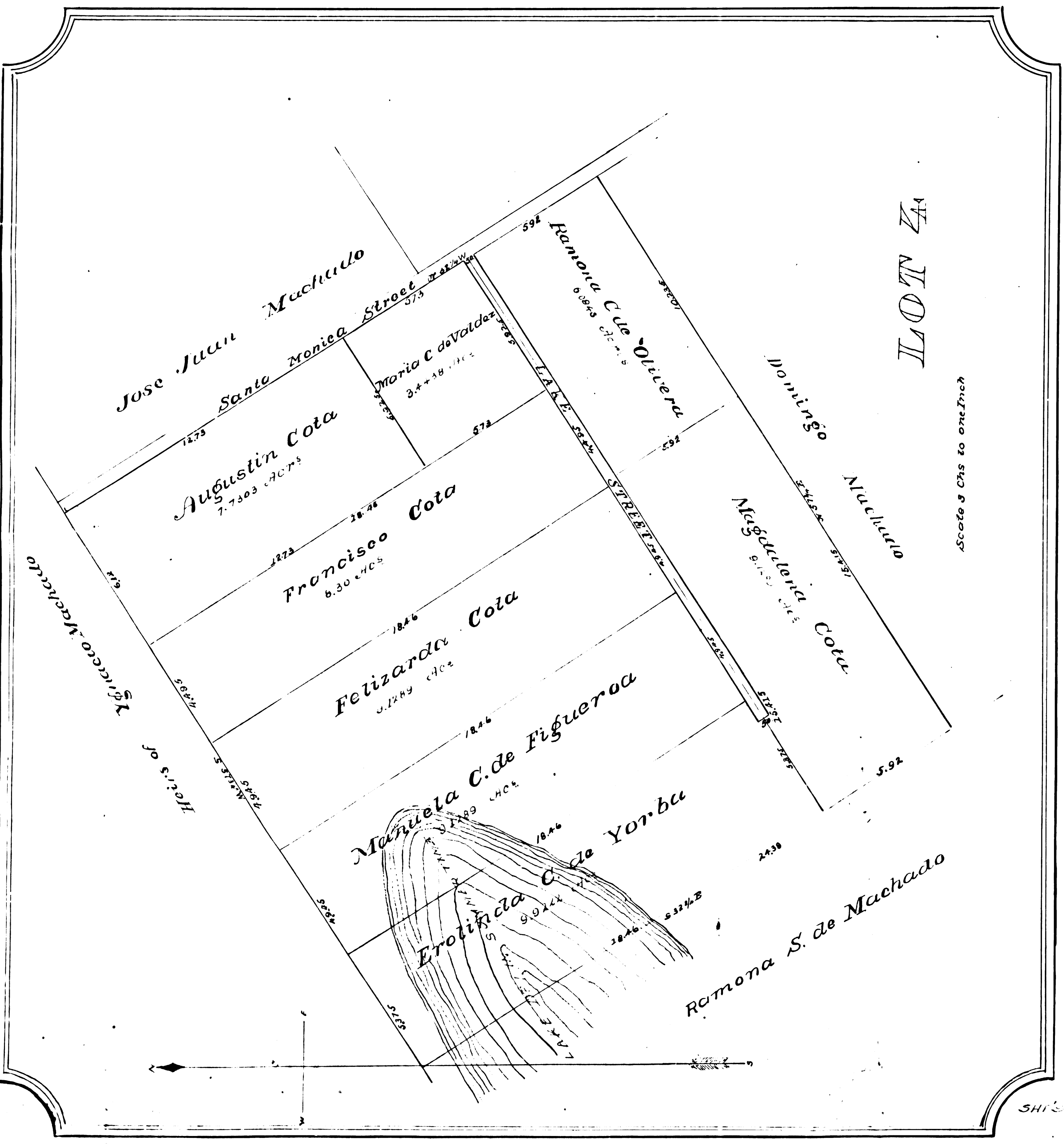
LOT 1

Scale 3 Chs to an Inch



LOT 4

Scale 3 Chs to an Inch



FM 110092