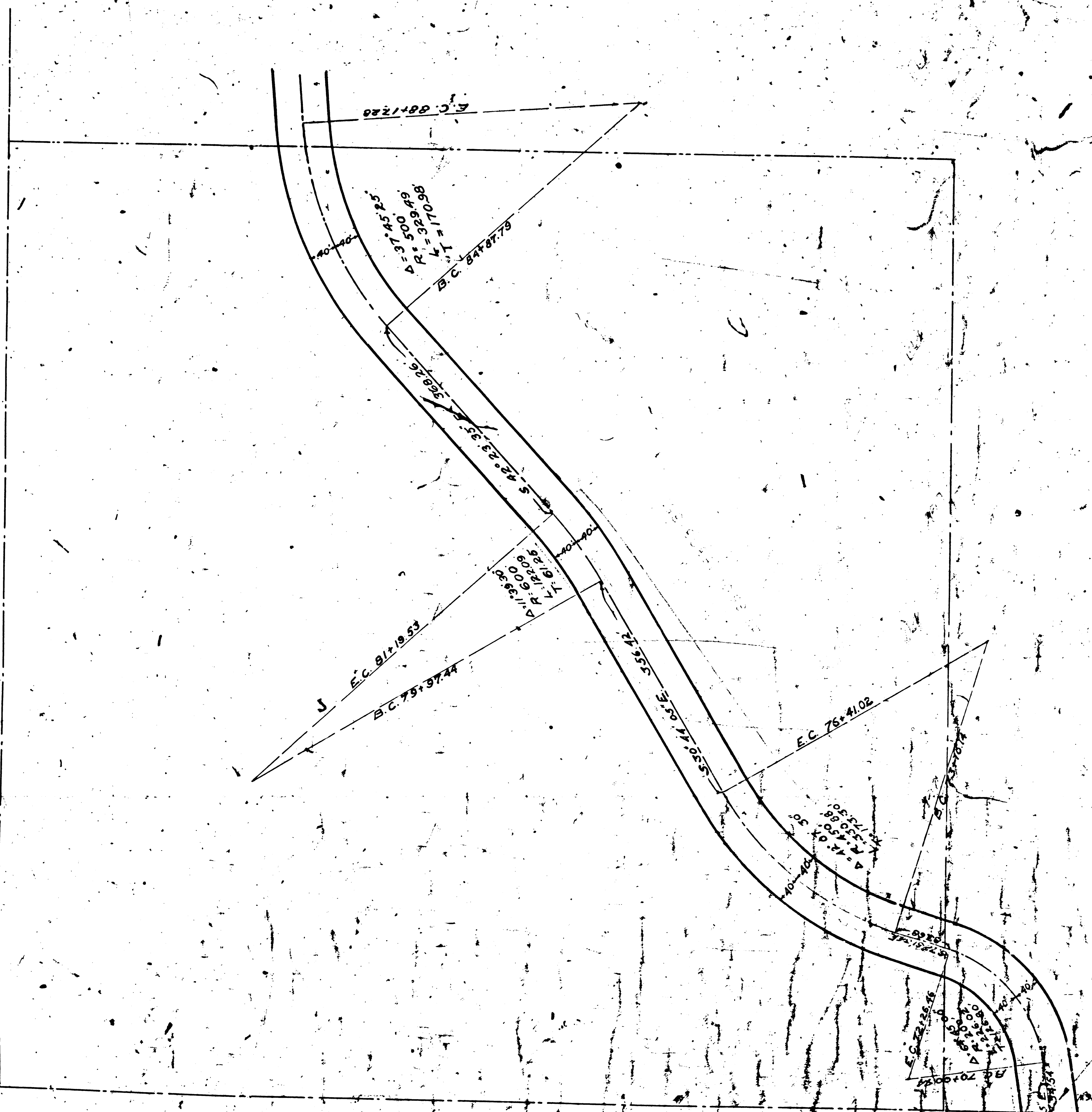
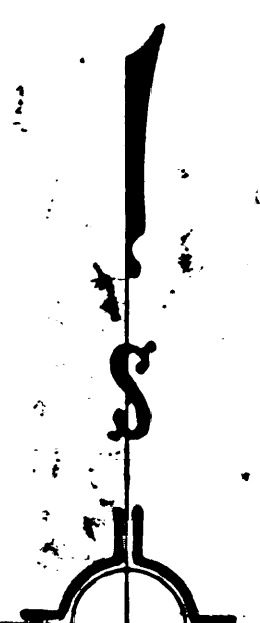


REVISED 11 3 2 19 11
A O A 5

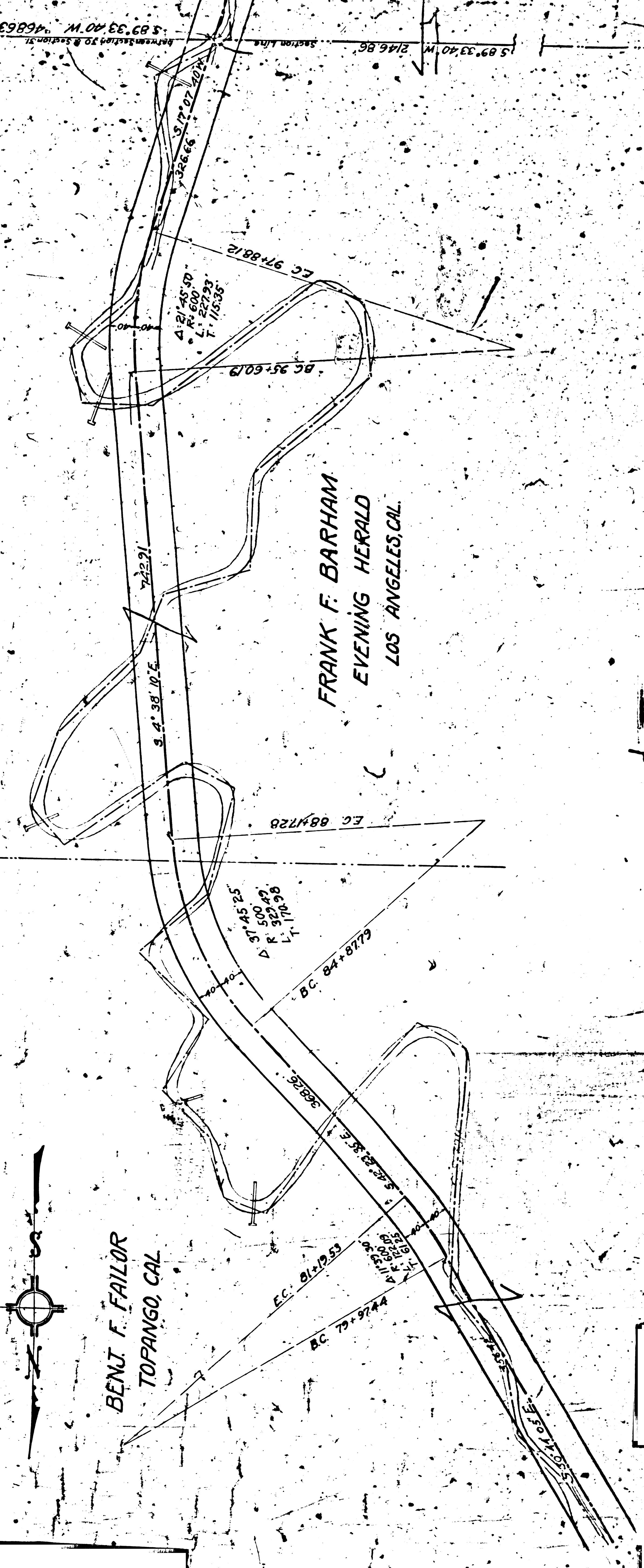


FOR THIS PORTION SET



BENJ. F. FAILOR
TOPANGO, CAL.

FRANK F. BARHAM
EVENING HERALD
LOS ANGELES, CAL.



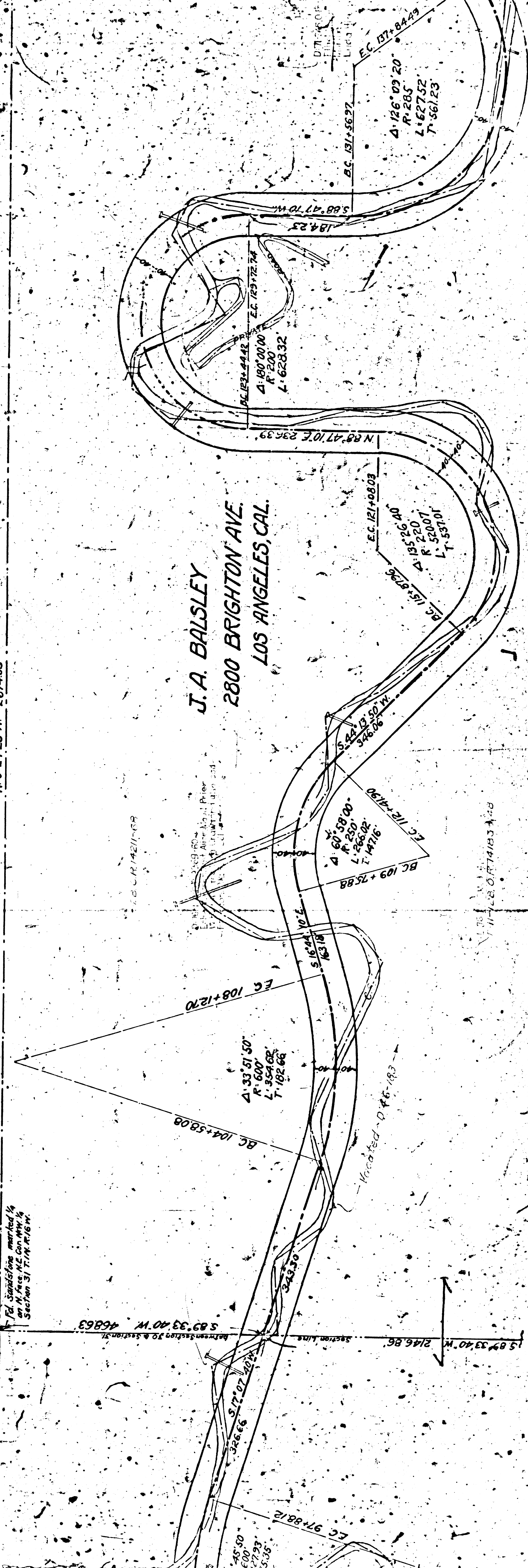
See Map of Top.

SECTION 20
TOWNSHIP 11 N
RANGE 10 E

SEC.

F. M. 20091

N. 0° 24' 25" W. 267.005'



N 0° 09' 27" W 1572.07'

N 0° 09' 27" W

Section 6
T.13. R.16.W.
N.E. cor. Tract 8545

BUS C. CHENEY
INGO, CAL.

17

TRACT N^o 8545
M.B. 108-93-77

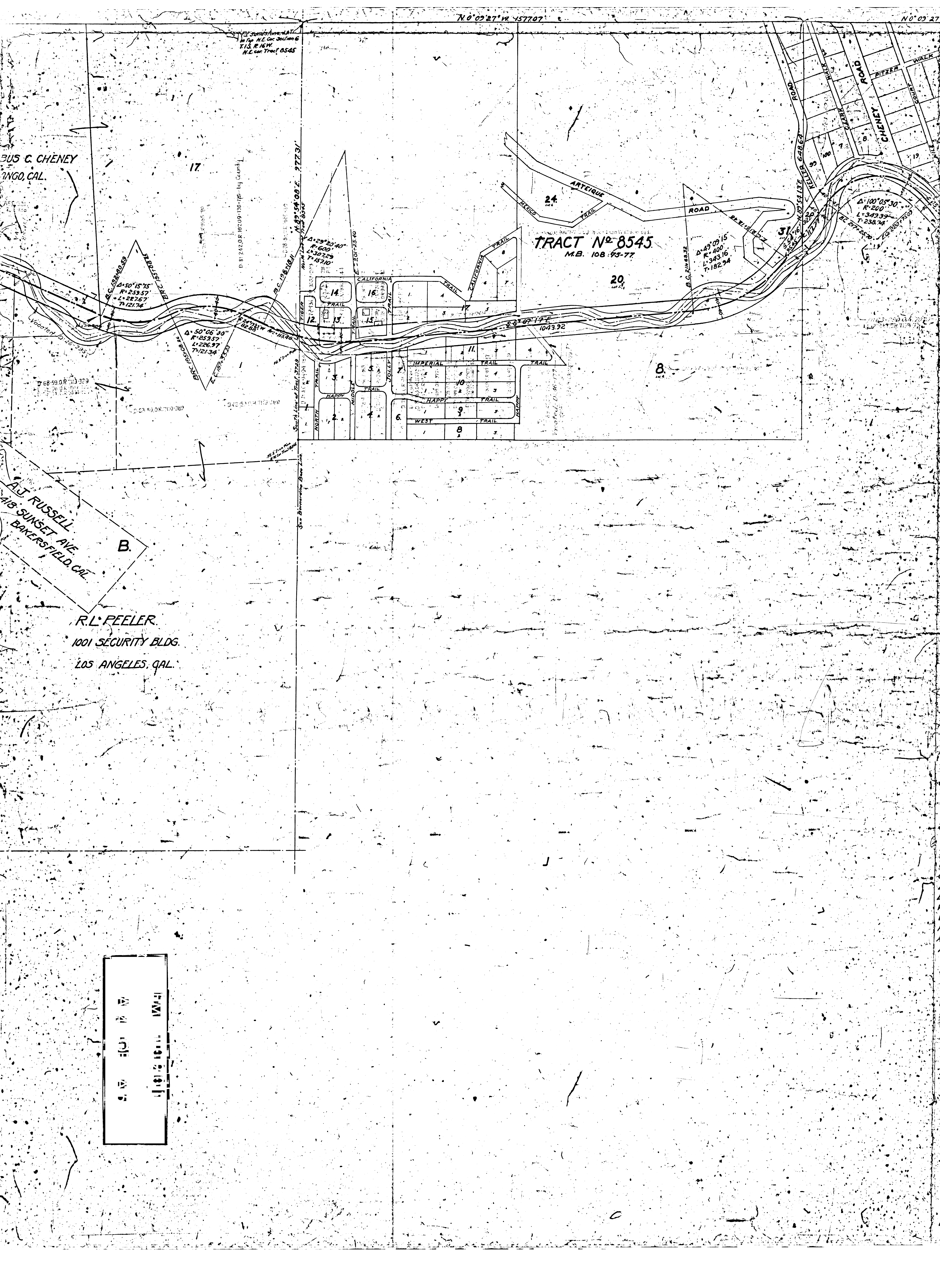
20

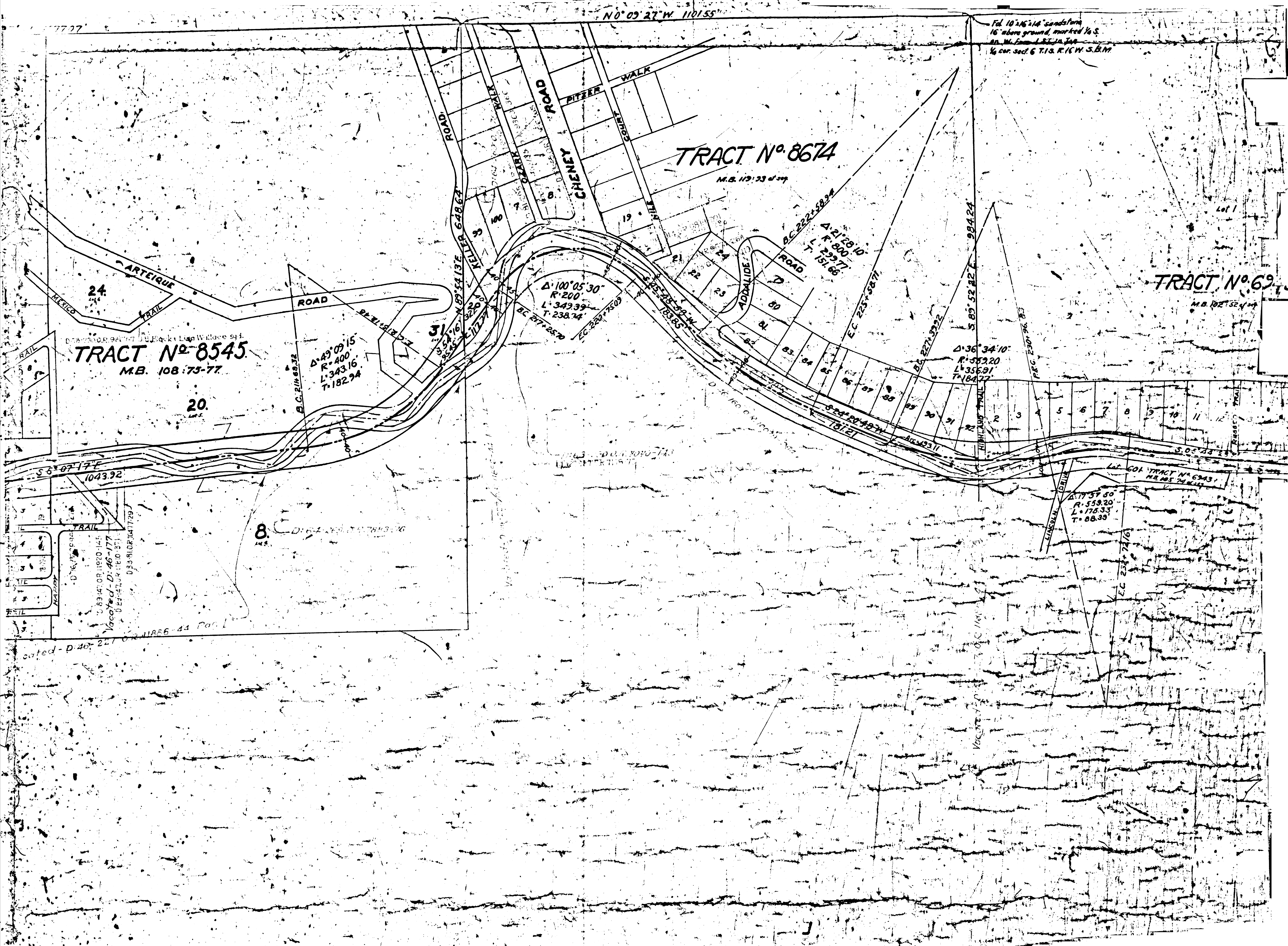
D.J. RUSSELL
418 SUNSET AVE
BAKERSFIELD, CAL.

B.

R.L. PEELER
1001 SECURITY BLDG.
LOS ANGELES, CAL.

11 10 9 8 7 6 5 4 3 2 1





CASH CONTRACT No. 325 TOPANGO CANYON ROAD

Curves in Old Road	137
Curves in New Line	21
Length of Old Road	23,281 ft
Length of New Line	16,326 ft
Width of Oiled Surface, Old Road	18 to 20 ft
Width of New Roadway	40 ft
Profile Estimate	Cut 275,000 cu yds. Fill 240,000 cu yds.
Approximate Rock Excavation	50,000 cu yds.

Heavy Broken Line is Center Line of New Location

FROM
 THE
 PLAN
 OF
 THE
 ROAD