

TOWNSHIP 1 NORTH, RANGE 14 WEST, S.B.B.M.

SECTION 31.

SECTION 32.

SECTION 33.

36.

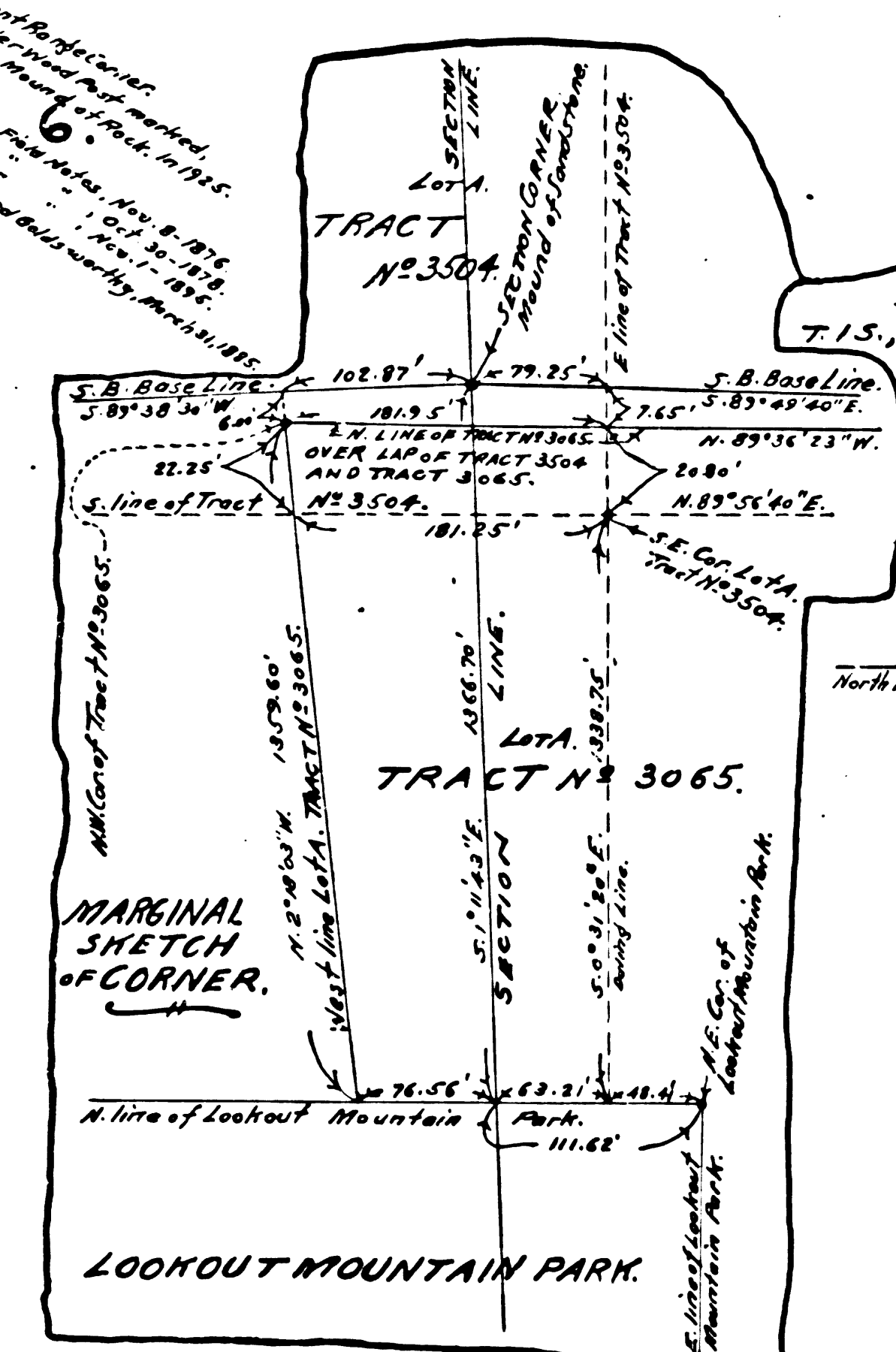
31.

33.

34.

San Bernardino Base Line. 5242.47' Measured along the San Bernardino Base Line. 5.89° 45' 40" E. 5306.93' measured along the San Bernardino Base Line. 5295.63' Measured along the San Bernardino Base Line.

TOWNSHIP 1 SOUTH, RANGE 14 WEST, S.B.B.M.



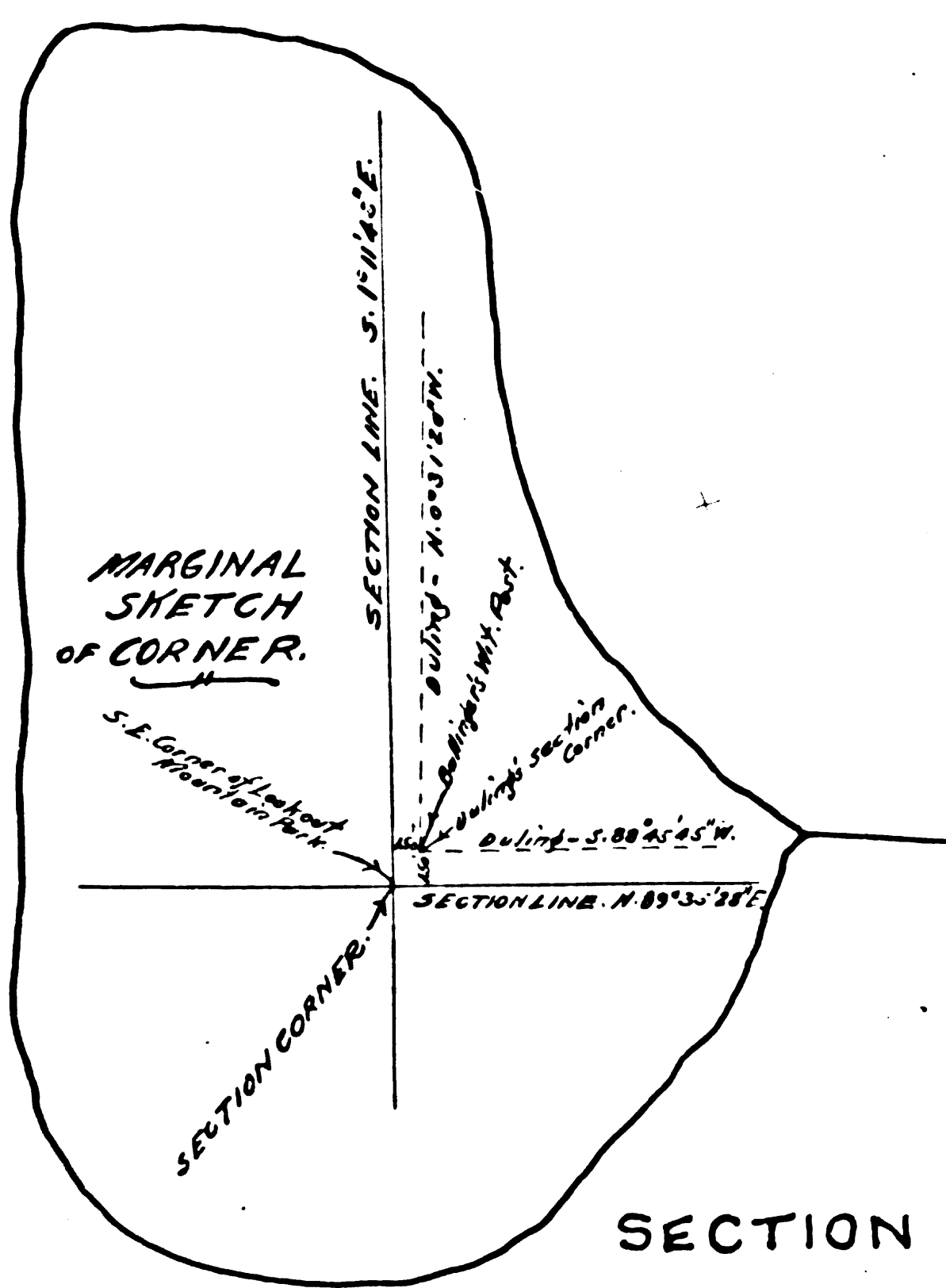
SECTION 6.

I, S. B. Reave, hereby certify that I am a Civil Engineer, and that the map represents a survey of Section 5, Township 1 South, Range 14 West, San Bernardino Base and the various lots and all of the boundaries shown on the Section Corner hereon actually exist and their positions are correctly shown.

S. B. Reave, C.E.

Witness my hand and seal of office at Los Angeles, California, this 15th day of February, A.D. 1928 before me, EDITH D. HAMMOND, a Notary Public in and for the said County and State, residing hereon, July 2nd 1928 and sworn, personally appeared S. B. REAVE, Civil Engineer known to me to be the person whose name subscribed to the within instrument and acknowledged to me that he executed the same in witness whereof, I have hereunto set my hand and official seal the day and year first above written.

Edith D. Hammond, Notary Public for said County and State, My Commission Expires Oct. 4, 1929.



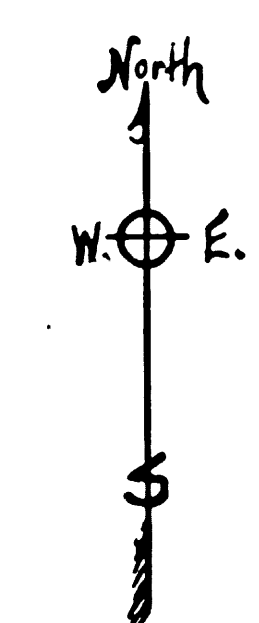
SECTION 7.

SECTION 8.

SECTION 9.

SECTION 5.

SURVEY OF SECTION FIVE, TOWNSHIP 1 SOUTH, RANGE 14 WEST, S.B.B.M. ALSO THE SAN BERNARDINO BASE LINE; AND ALSO INCLUDING THE LANDS INVOLVED IN THE SUPERIOR COURT CASE # 14-700 AND SUPERIOR COURT CASE # 14-701. Scale 1 inch = 300 feet. Surveyed and assisted from 1927 to 1928, inclusive. By S. B. Reave, C.E. Los Angeles, Cal. Case dismissed June 15, 1929 July 26, 1928



NOTE - THIS MAP IS FILED AS COUNTY SURVEYOR'S MAP N 8-B-206.

SECTION 4.

F.M. 10206