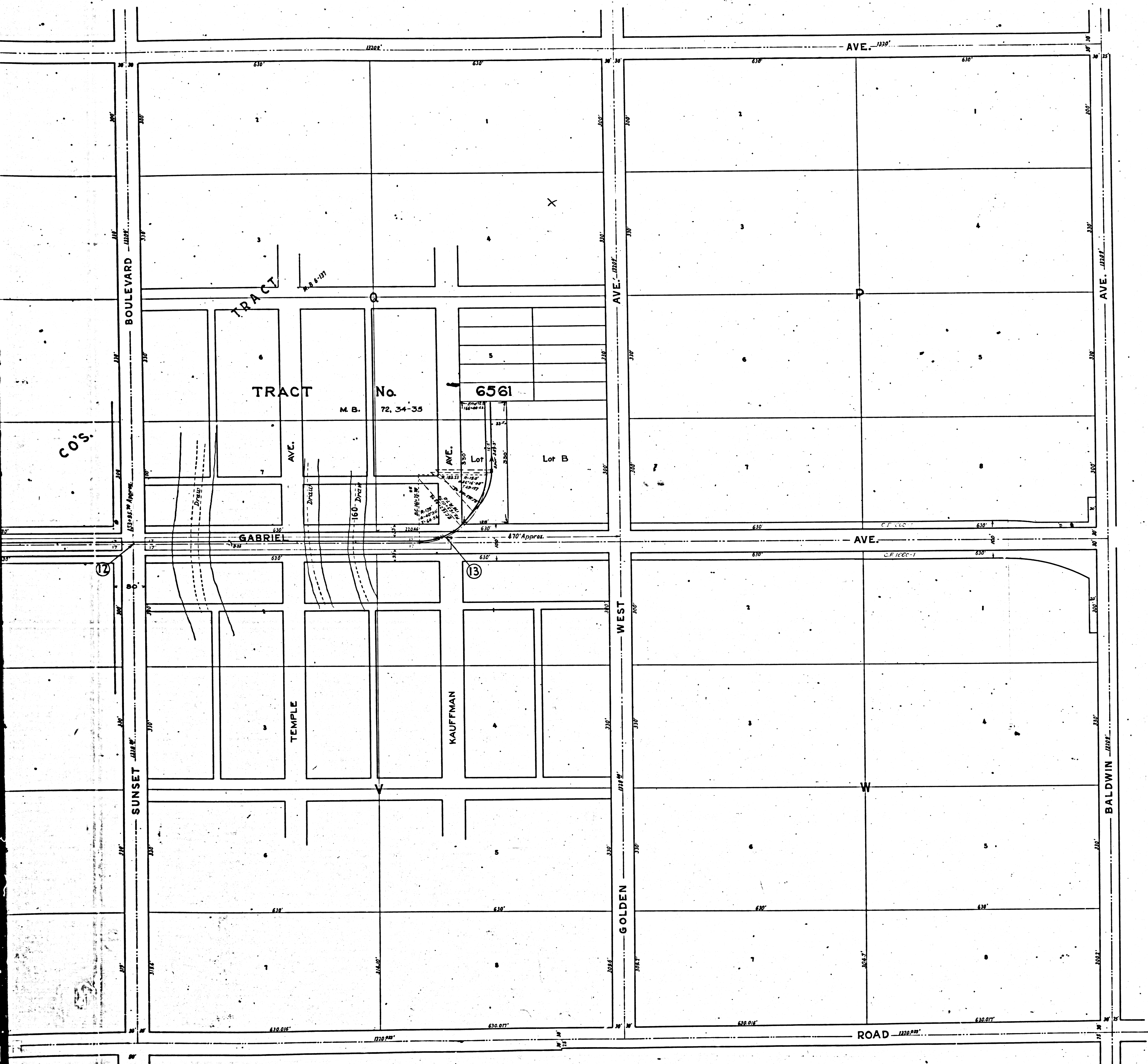


3623  
M.B. 44-51

LOMA TRACT  
M.B. 13-104  
C.R. 1045  
S. 06° 21' C.R.  
S. 7° 23' 03"  
S. 7° 37' 51"  
L.C. 7482.24'

F.M.	10	2	16
A2	OF	A3	





— MAD —  
 of the located center line of the  
 PACIFIC ELECTRIC RAILWAY  
 from —  
 END OF SAN GABRIEL LINE AT SAN GABRIEL BOULEVARD  
 EASTERLY TO A POINT NEAR GOLDEN WEST AVENUE  
 in the —  
 COUNTY OF LOS ANGELES, STATE OF CALIFORNIA  
 to accompany application of the  
 PACIFIC ELECTRIC RAILWAY COMPANY —  
 to the —  
 RAILROAD COMMISSION OF THE STATE OF CALIFORNIA  
 FOR PERMISSION TO CONSTRUCT GRADE CROSSINGS OF THE TRACKS  
 OF SAID RAILWAY COMPANY WITH FOLLOWING PUBLIC HIGHWAYS IN THE COUNTY  
 OF LOS ANGELES, STATE OF CALIFORNIA.

- 1- Public highway known as San Gabriel Boulevard in the County of Los Angeles at its intersection with Olive Ave.
  - 2- Public highway known as Sixth Street in the County of Los Angeles at its intersection with Olive Ave.
  - 3- Public highway known as Fifth Street in the County of Los Angeles at its intersection with Olive Ave.
  - 4- Public highway known as Vista Street in the County of Los Angeles at its intersection with Olive Ave.
  - 5- Public highway known as Orange Ave in the County of Los Angeles at its intersection with Olive Ave.
  - 6- Public highway known as Muscatel Ave. in the County of Los Angeles at its intersection with Olive Ave.
  - 7- Public highway known as Rosemead Avenue in the County of Los Angeles at a point near the northerly line of Olive Avenue.
  - 8- Public highway known as Marysville Avenue in the County of Los Angeles at a point approximately 140 feet south of the north line of Sunny View Tract.
  - 9- Public highway known as Encinita Avenue in the County of Los Angeles at its intersection with San Gabriel Avenue.
  - 10- Public highway known as Live Oak Avenue in the County of Los Angeles at its intersection with San Gabriel Avenue.
  - 11- Public highway known as Sunset Boulevard in the County of Los Angeles at its intersection with San Gabriel Avenue.
  - 12- Public highway known as San Gabriel Avenue in the County of Los Angeles at its intersection with Golden West Avenue.
  - 13- Public highway known as San Gabriel Avenue in the County of Los Angeles at a point approximately 410 feet west of the center line of Golden West Avenue.
- Scale 1"=100'  
Index 44

NOTE: This map was filed in 1928  
as authority for track data only

FM	10	216
A3	OF	A3

PACIFIC ELECTRIC RY.  
 Office of Chief Engineer  
**E. E. 436**

EXHIBIT A