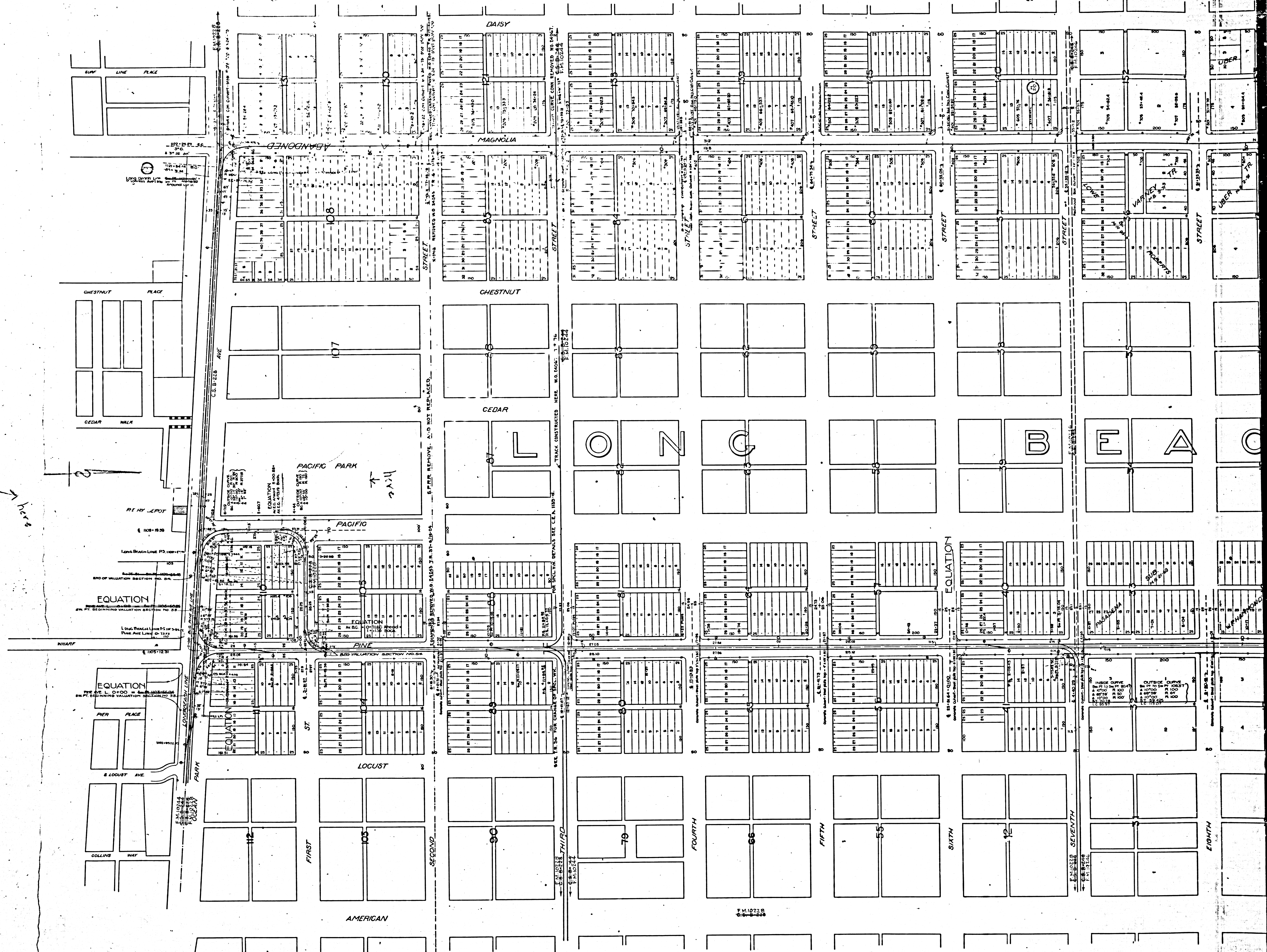


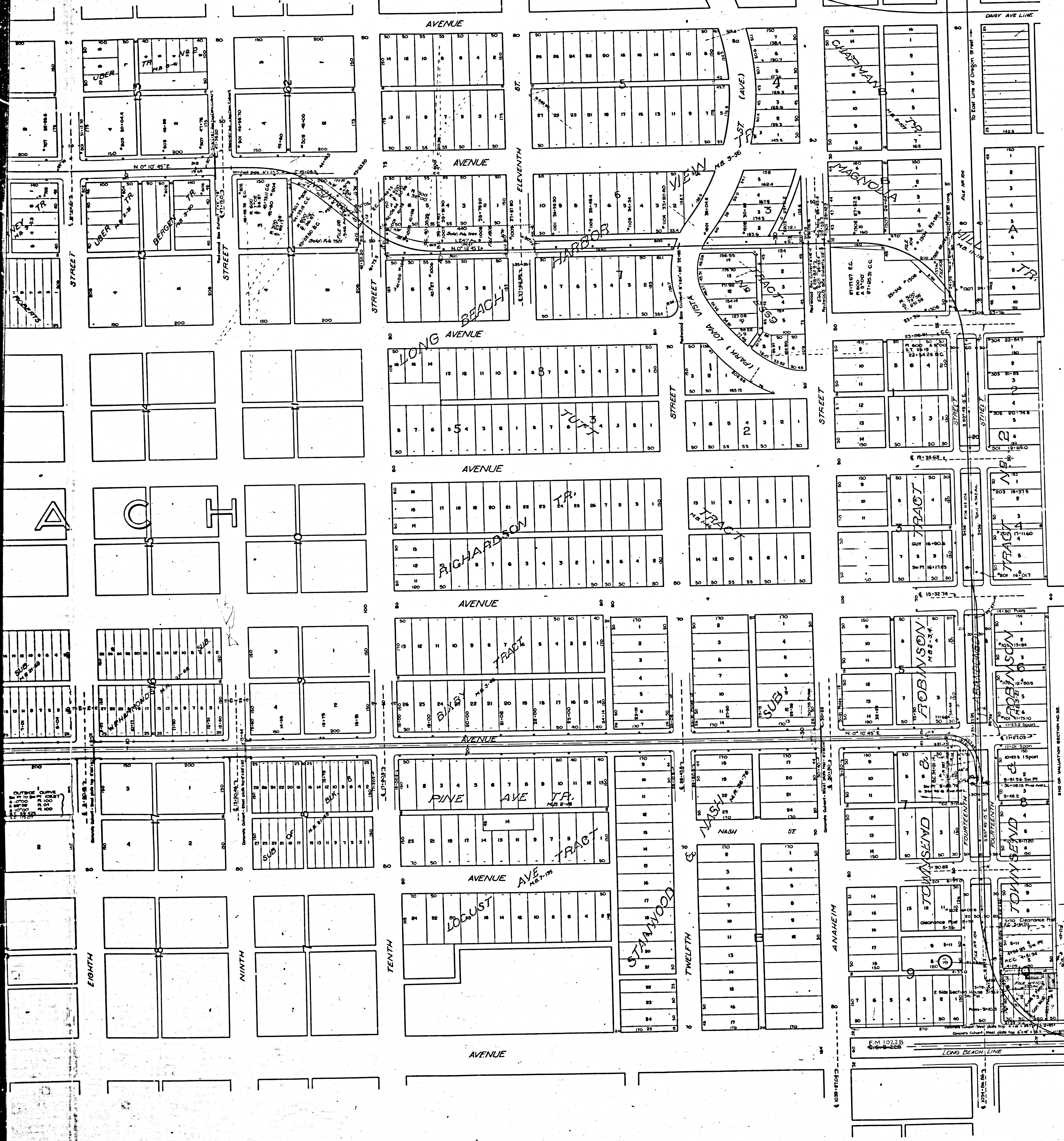
OCEAN

PACIFIC

→ here



F.M. 10235
 A1 OF A2



SCHEDULE OF REAL ESTATE TITLES					
PLAT NO.	DESCRIPTION OF PROPERTY	DATE	GRANTOR	ACRES	REMARKS
104	American Ave to Oregon Ave	8-10-02	Stephen Townsend et al.	.4742	
105	10th to Anselm Road	8-10-02	Brooklyn Bank & Trust Co.	.1347	
116	Anselm Road to 14th St	8-10-02	Stephen Townsend et al.	.137	
118	Long Beach	4-18-02	C.M. Shannon et al.	.346	
107 1034 10	Townsend & Robinson Tract	12-8-02	C.B. Greasy, et al.	.553	

PACIFIC ELECTRIC RAILWAY CO
 MAP OF
MAGNOLIA AVENUE LINE
PACIFIC AVENUE LOOP
PINE AVENUE LINE
 CITY OF LONG BEACH

SCALE
ONE INCH = 100 FEET

NOTE—
Mile Posts indicate distances from a point
in the Center Line of Main Street opposite entrance
to Pacific Electric Railway Company's Depot at Sixth
and Main Streets, Los Angeles.

State of California) ss.
County of Los Angeles)
I, the undersigned officers of the Pacific Electric Railway Co do hereby certify
that this map is a true and correct map of the Pacific Electric Railway Co's Magnolia Ave Line,
Pacific Ave Loop and Pine Ave Line in the City of Long Beach, California,
Prepared from records now in office of said Company.

Attest: _____ President
Secretary _____ Chief Engineer

Corporate Seal _____

Subscribed and sworn before me this _____ day of _____

Notary Seal _____
Notary Public, in and for the County
of Los Angeles, State of California

FILED MAP NO 10235
NOTE: This map was filed in 1928
as authority for track data only

F.M. 10235
A21 OF A21

Pacific Electric Ry.
Office of Chief Engineer
C.E.V. 38