

G  
A  
R  
D  
E  
N  
A  
V  
E  
N  
U  
E

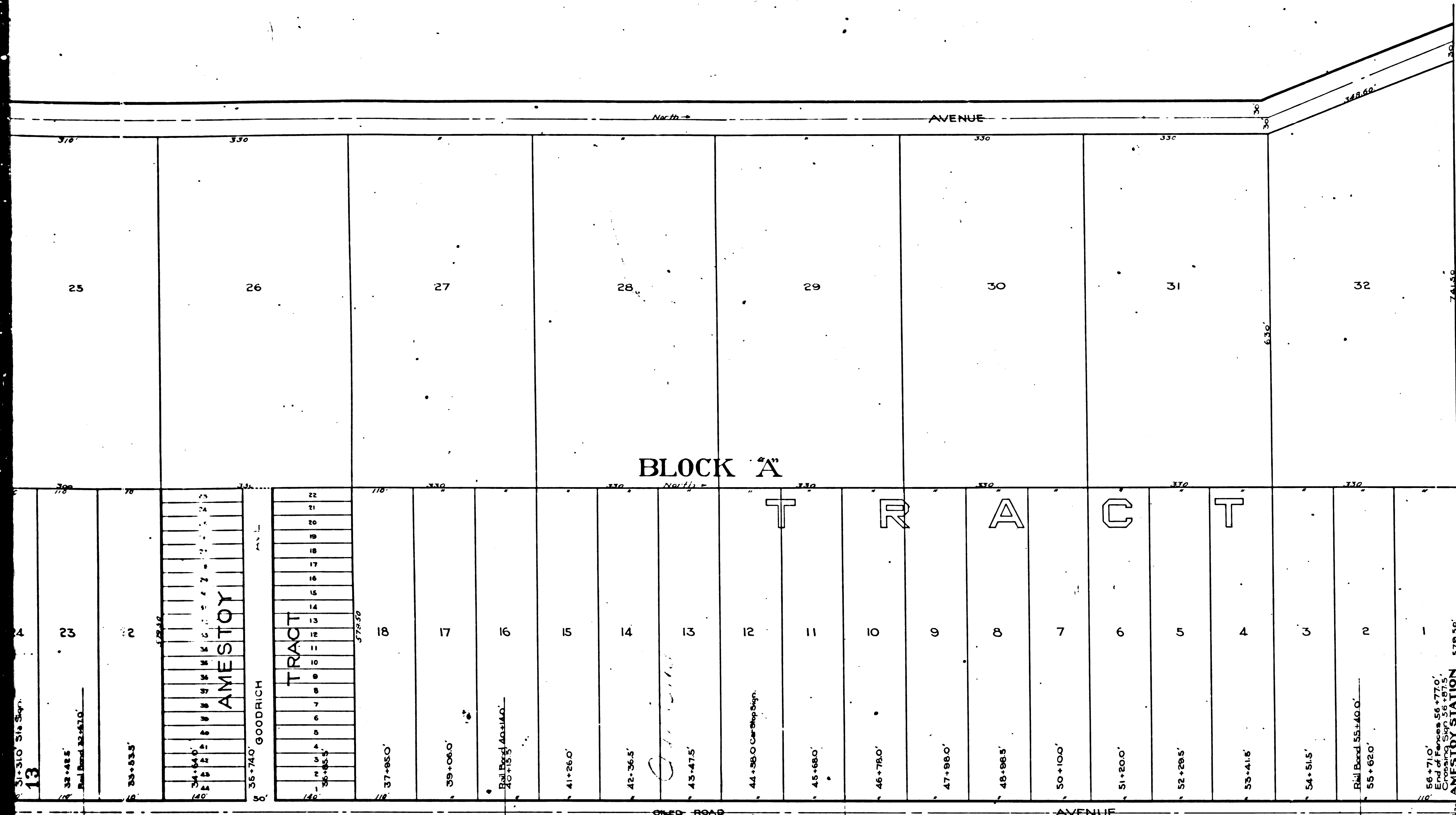
VERMONT											
1	2	3	4	5	6	7	8	9	10	11	12
13	14	15	16	17	18	19	20	21	22	23	24
25	26	27	28	29	30	31	32	33	34	35	36
37	38	39	40	41	42	43	44	45	46	47	48
49	50	51	52	53	54	55	56	57	58	59	60
61	62	63	64	65	66	67	68	69	70	71	72
73	74	75	76	77	78	79	80	81	82	83	84
85	86	87	88	89	90	91	92	93	94	95	96
97	98	99	100	101	102	103	104	105	106	107	108
109	110	111	112	113	114	115	116	117	118	119	120

SW 1/4 of the NW 1/4 of Sec. 19.  
T. 3 S., R. 13 W. S. 5 B. 4 M.

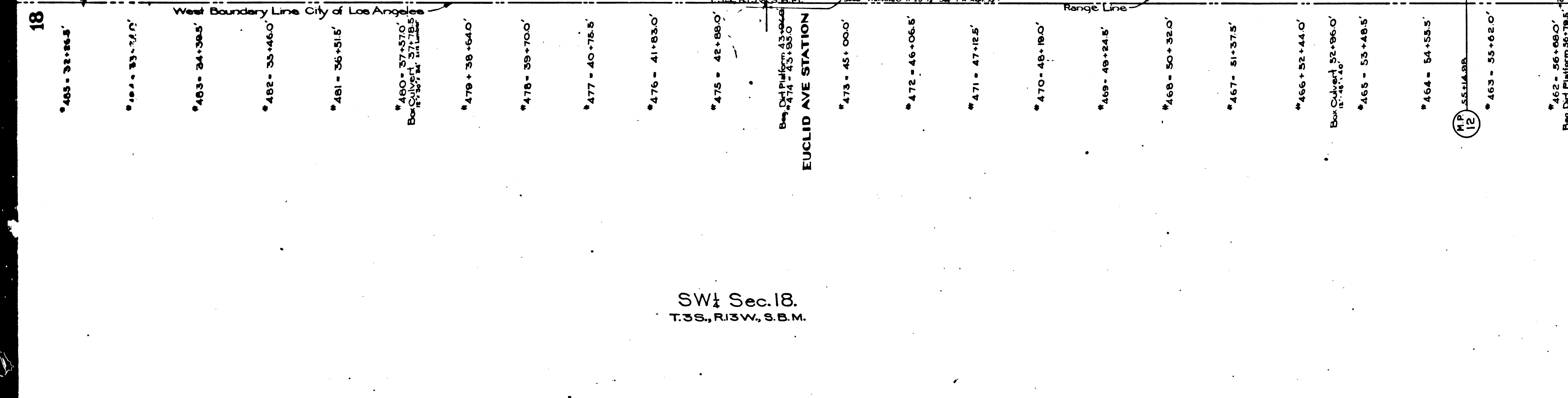
NW 1/4 of the NW 1/4 of Sec. 19.  
T. 3 S., R. 13 W. S. 5 B. 4 M.

F.M.	10239
A1	OF A4

ROSEGRANS

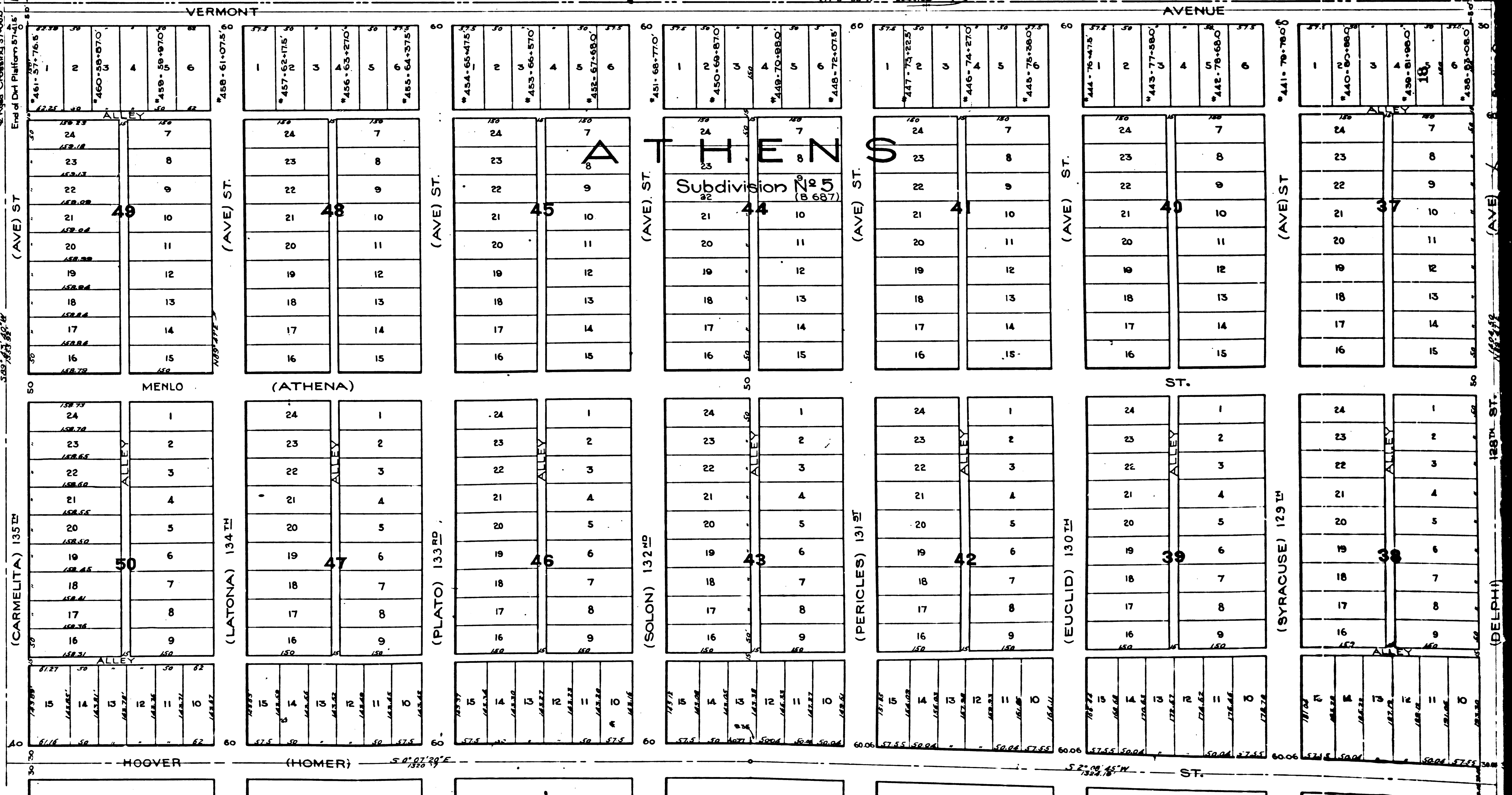


Portion of Townsite of Rosecrans

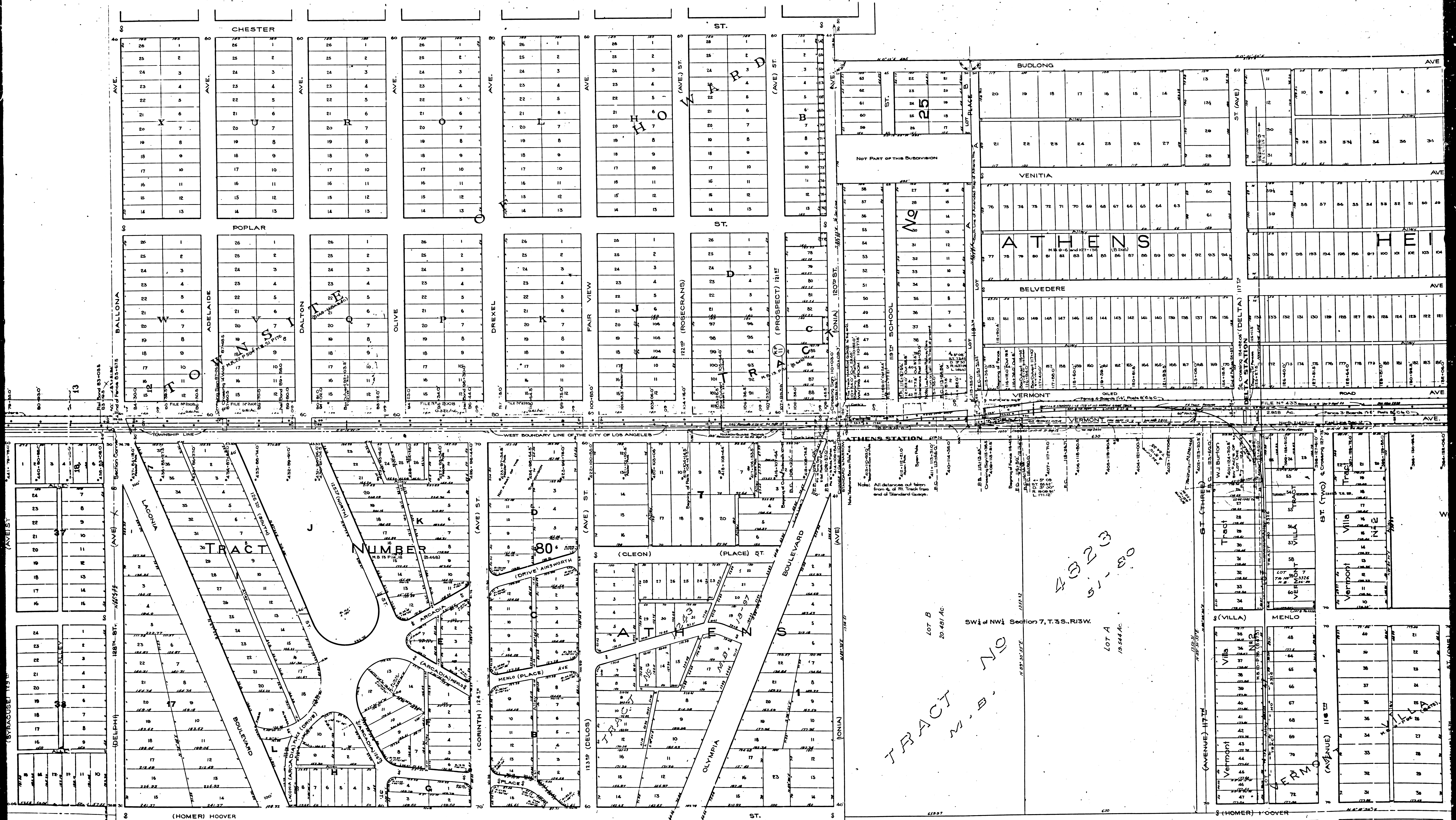


SW 1/4 Sec. 18,  
T.33S, R.13W, S.B.M.

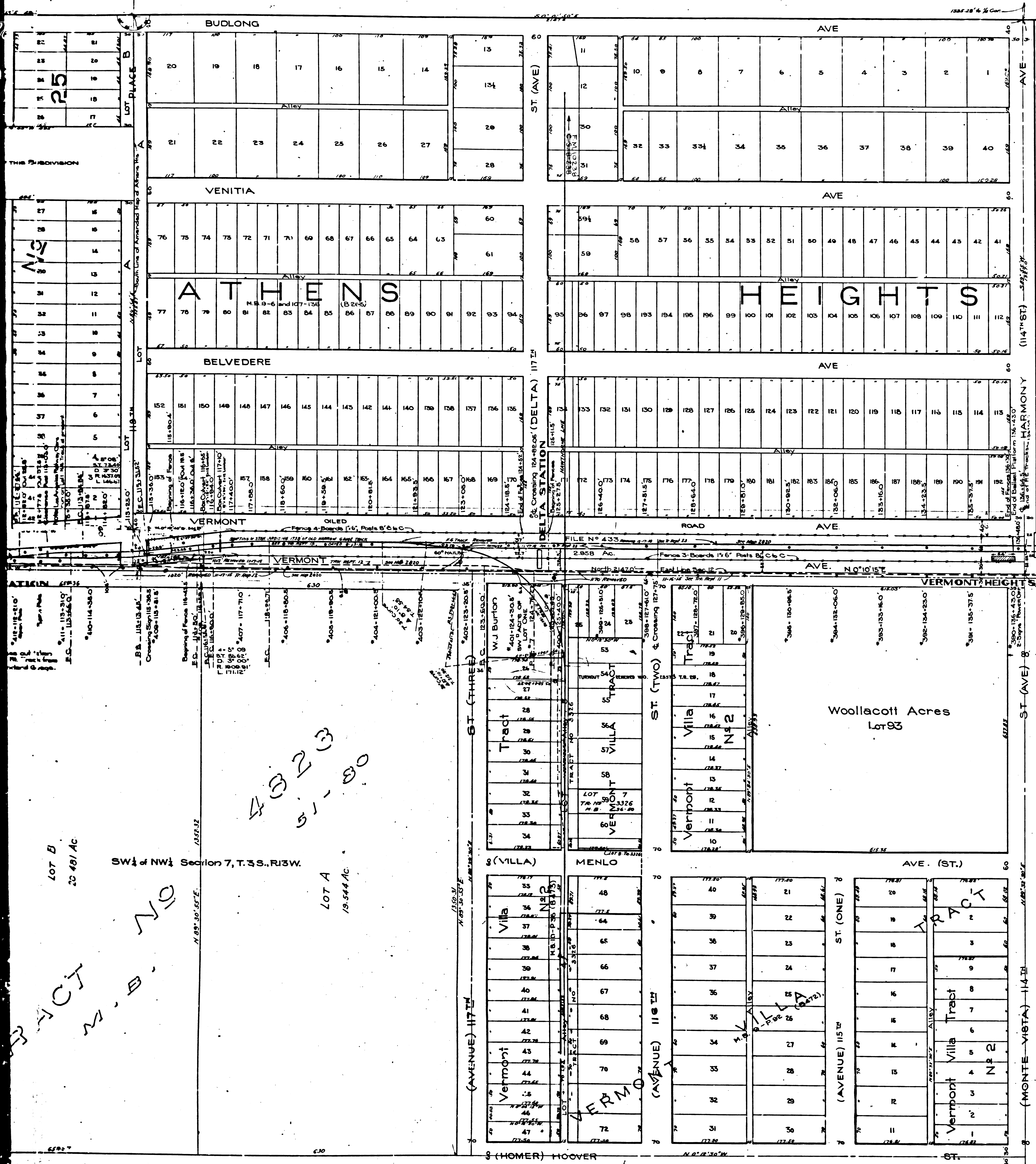
SCHEDULE OF REAL ESTATE TITLES						
FILE#	DESCRIPTION OF PROPERTY	FORM	DATE	GRANTOR	ACRES	REMARKS
433	A-60 Ft. parcel of land lying W of and adjoining Vermont Ave. from N. Line Sec. 18, T.33S, R.14W, S.B.M. to S. Line of said Sec. 18, as shown on the Attached Map of Adams Hill.	B.S.S.	7-6-51	D.G. Peck, Et. Ux.	2.958	
436	A-60 Ft. parcel of land lying W of and adjoining the E. Line of the SW 1/4 Sec. 18, the E. Line of NE 1/4 Sec. 24 and E. Line of Lot 1, 2, 3, 4, 5, 6, 7, 8, 9, 10, 11, 12, 13, 14, 15, 16, 17, 18, 19, 20, 21, 22, 23, 24 T.33S, R.14W, S.B.M. from NE 1/4 Sec. 18, to N. Line of Rancho San Pedro.	B.S.S.	7-6-51	Amestoy Estate Co.	7.536	
2408	1/4 A-20 Ft. parcel of land E of and adjoining W. Line of Sec. 18 from N. Line Sec. 18 to N. Line of W. Line of Rancho San Pedro. 2nd A-20 Ft. parcel of land E of and adjoining E. Line of above parcel from a point 250 Ft. S. of N. Line Sec. 18 to a point 250 Ft. S. of N. Line.	G.B.S.	2-29-54	Carl F. Rosecrans Et. Ux.	1.553	
2008	A-60 Ft. parcel of land lying the full length of the E. side of N. of NE 1/4 Sec. 18, T.33S, R.14W, S.B.M. and adjoining Vermont Ave. on W.	G.B.S.	7-7-51	H.V. Davis, Adm'x.	1.825	
2078	Howard Townsite	G.B.S.	7-7-51	H.V. Davis, Adm'x.	0.322	
13	Howard Townsite	de	de	de	0.161	
4593	Howard Townsite	G.B.S.	6-8-52	C. Ganahl, Et. Al.	0.161	



F.M. 10239  
A2 OF A4



F.M. 10239  
 A3 OF A4



VALUATION SECTION N<sup>o</sup>37  
**PACIFIC ELECTRIC RAILWAY COMPANY**  
**MAP OF**  
**VERMONT HEIGHTS BRANCH**

From Junction with the WATTS-REDONDO LINE near Olive Station at Sta. 705+28.60 Feet = 0+00 Ft. to Vermont Heights Station at Sta. 137+02.18 Ft. located at Harmony Ave. or 114<sup>th</sup> St.

SCALE 1 INCH = 100 FEET

Note: Mile Posts indicate distances from a point in the Center-Line of Main Street opposite entrance to Pacific Electric Railway Company's Depot at Sixth and Main Streets, Los Angeles, California.

STATE OF CALIFORNIA  
 COUNTY OF LOS ANGELES  
 FILED MAP NO. 10239

We the undersigned officers of the Pacific Electric Railway Company, do hereby certify that this map is a true and correct map of the Pacific Electric Railway Company's Vermont Heights Branch from its junction with the Watts-Redondo Line near Olive Station, to a point in Vermont Avenue north of Harmony Ave. or 114<sup>th</sup> St., in Los Angeles County, as prepared from records in the office of said Company.

ATTEST.  
 Secretary \_\_\_\_\_ President \_\_\_\_\_  
 Chief Engineer \_\_\_\_\_

Corporate Seal

Subscribed and sworn to before me this \_\_\_ day of \_\_\_ 19\_\_

Notary Public in and for the County of Los Angeles, State of California.

Notarial Seal

F.M. 10239  
 A4 OF A4

PACIFIC ELECTRIC RY.  
 Office of Chief Engineer.  
 C.E.V. 30