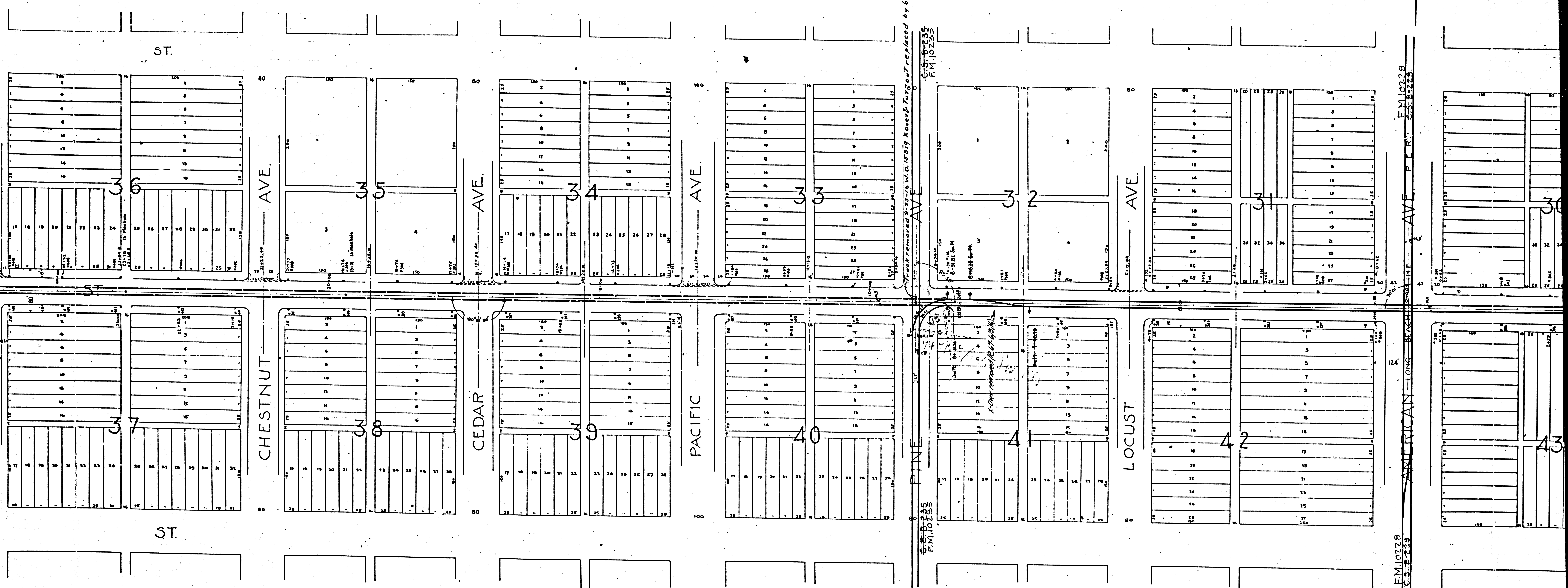


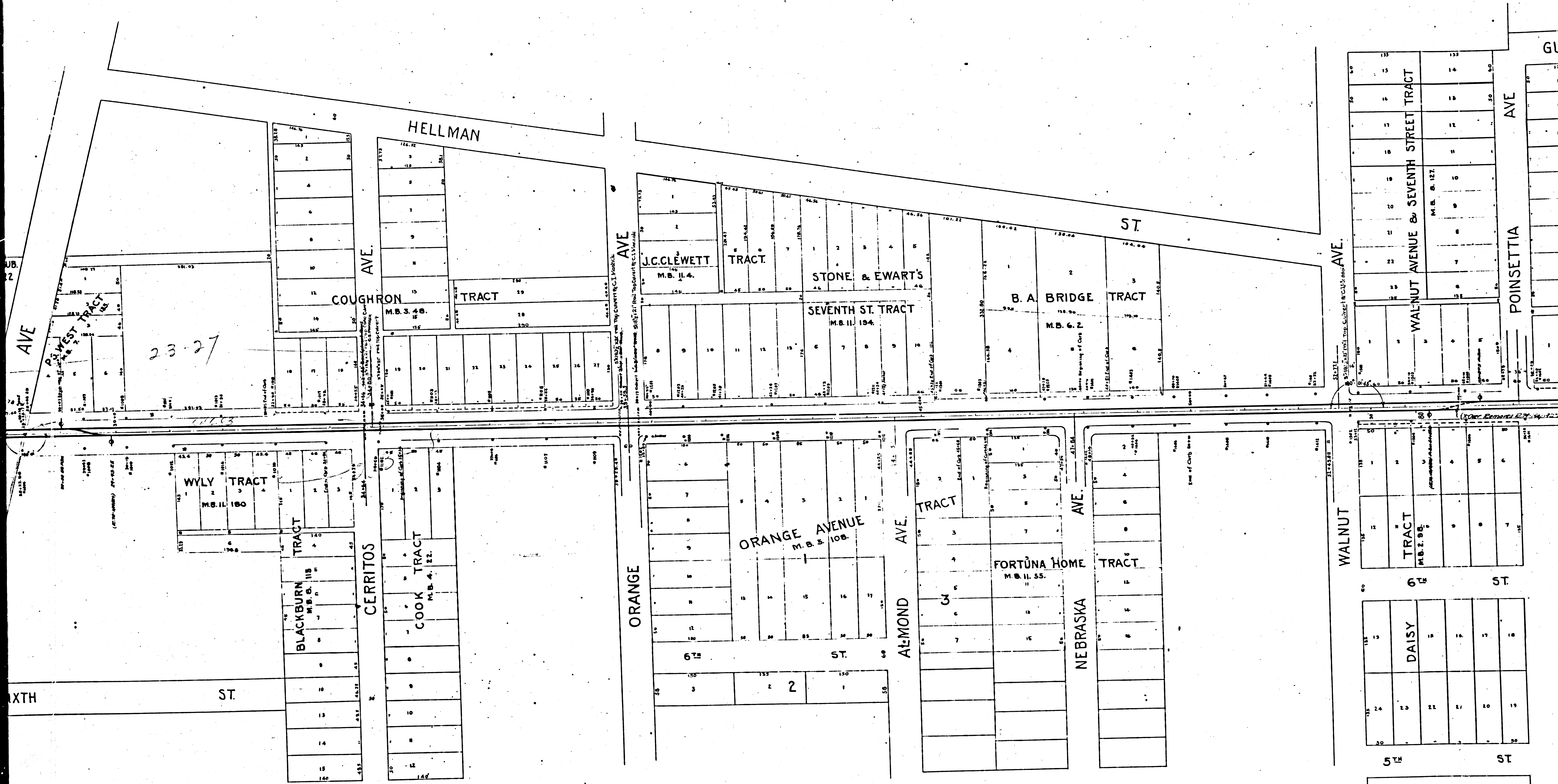
F.M.	10246	
A1	OF	A7



F.M.	10	24	6
A	2	OF	A 7

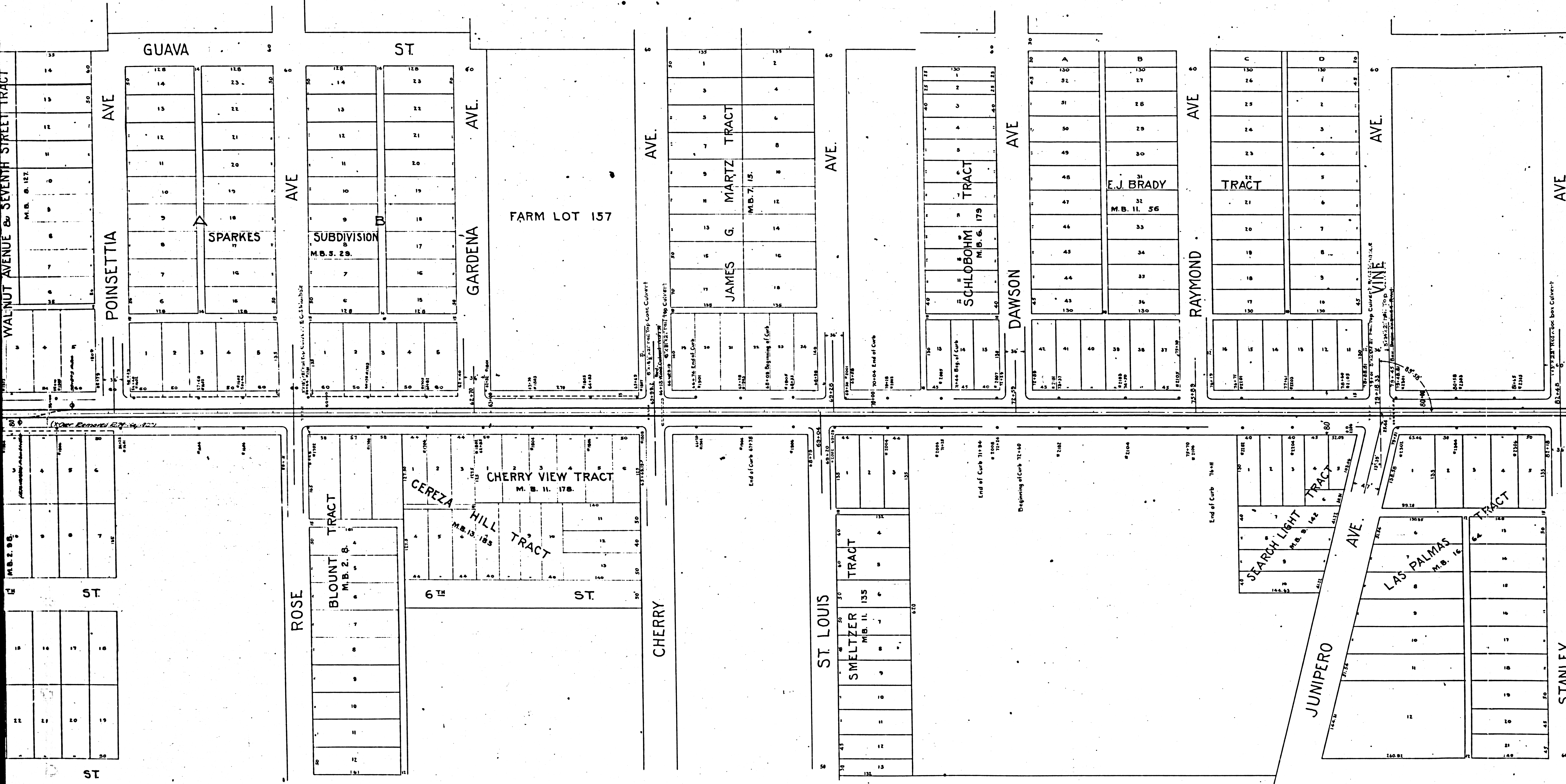


F.M.	10	2	4	6
A	3	OF	A	7

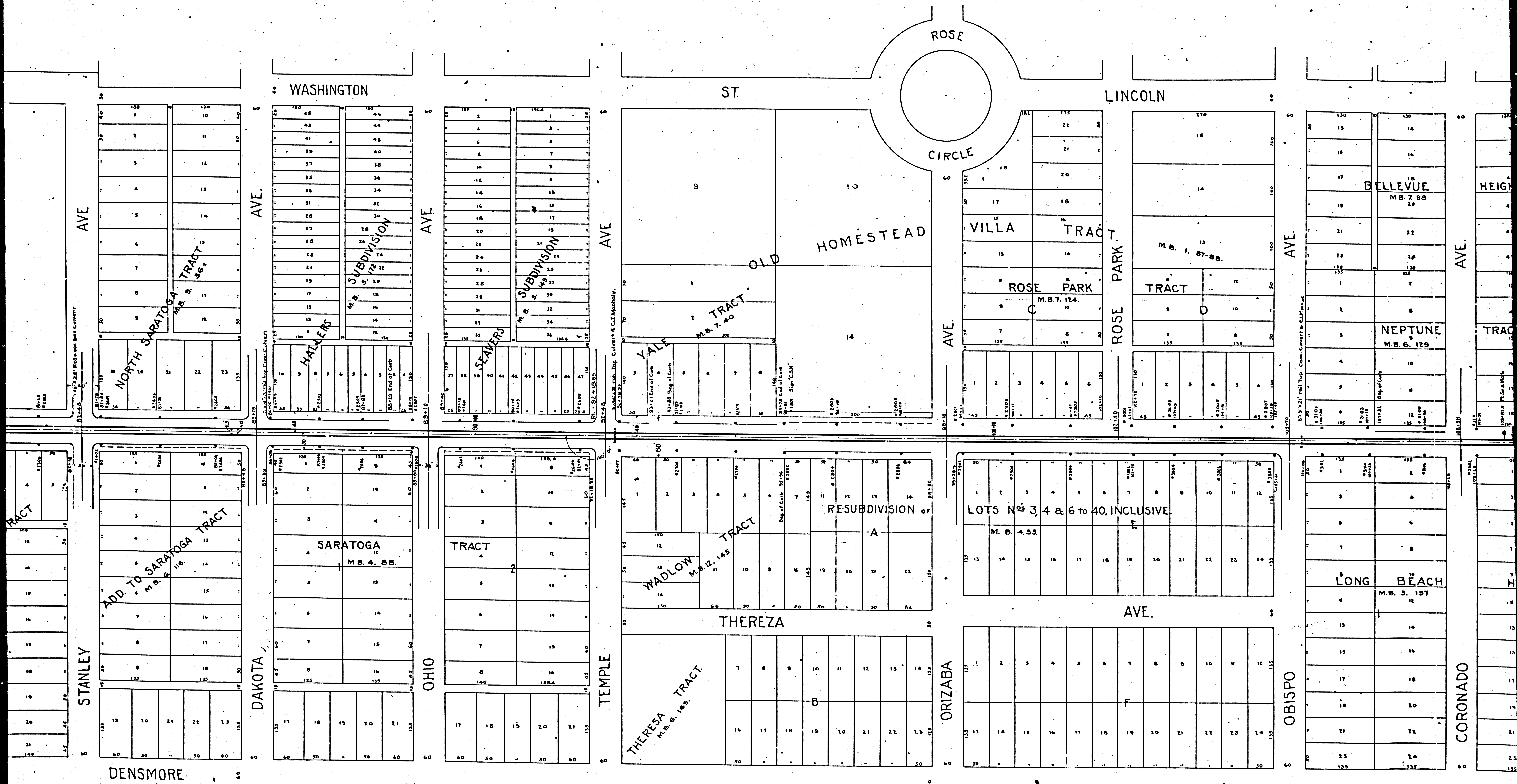


F.M. 10246  
 A4 OF A7

WALNUT AVENUE & SEVENTH STREET TRACT

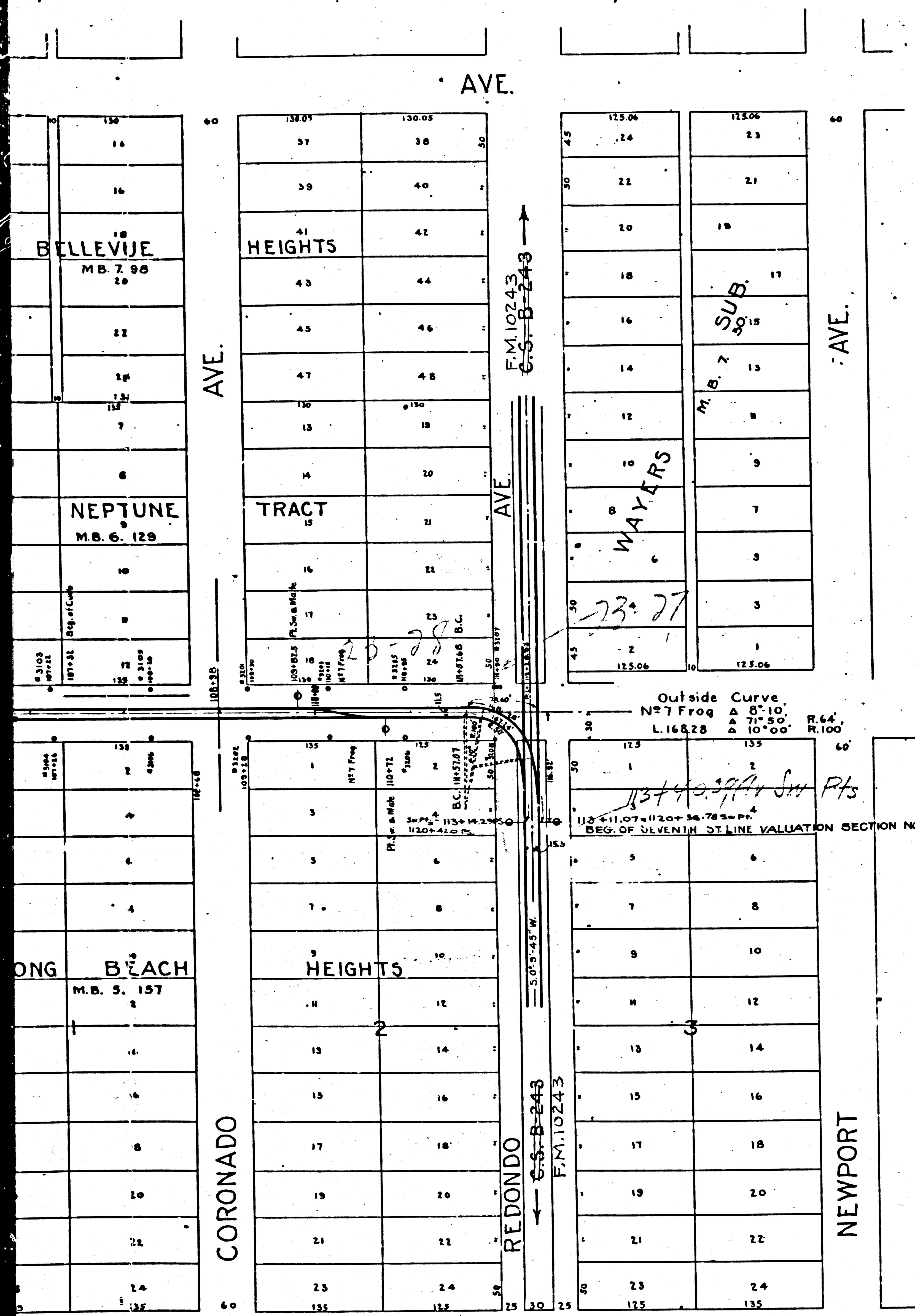


F.M.	1	0	2	4	6
A	5	OF	A	7	



F.M. 10246

A6 OF A7



PACIFIC ELECTRIC RAILWAY CO.  
 MAP OF  
 SEVENTH STREET LINE - LONG BEACH.  
 FROM JUNCTION WITH REDONDO AVE. LINE TO CERRITOS SLOUGH.  
 VALUATION SECTION NO. 56.

SCALE  
 ONE INCH = 100 FT.

FILED MAP NO. 10246

NOTE -  
 Mile Posts indicate distances from a point  
 in the Center Line of Main Street opposite entrance  
 to Pacific Electric Railway Company's Depot at Sixth  
 and Main Streets, Los Angeles.

State of California } s.s.  
 County of Los Angeles }

We, the undersigned, officers of the Pacific Electric Railway Co. do hereby certify that this  
 map is a true and correct map of the Pacific Electric Railway Co's Seventh St. Line in Long Beach City  
 from Junction with Redondo Ave. Line to Cerritos Slough. Prepared from records now in the  
 Office of said Company.

Attest. \_\_\_\_\_ President  
 \_\_\_\_\_ Secretary \_\_\_\_\_ Chief Engineer

Corporate Seal.

Subscribed and sworn to before me this \_\_\_\_\_ day of \_\_\_\_\_

Notarial Seal.

Sht. 30

Notary Public in and for the County  
 of Los Angeles, State of California.

F.M. 10246  
 A7 OF A7