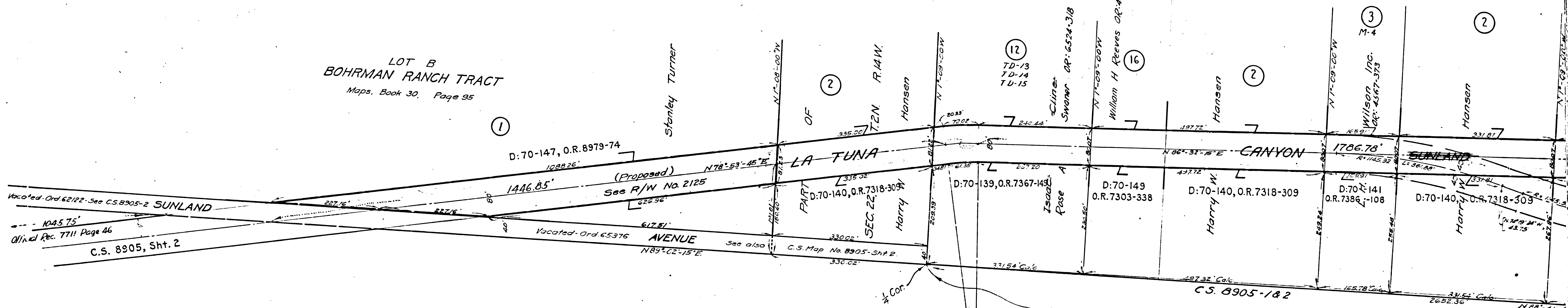


LOT B
BOHRMAN RANCH TRACT
Maps, Book 30, Page 95

D:75-273, O.R.9533-166 (Quitclaim)
SEC. 22 T. 2 N.



Vacated-Ord 62122-See C.S. 8905-2 SUNLAND
1045.75'
Official Rec. 7711 Page 46
C.S. 8905, Sht. 2

D:70-147, O.R. 8979-74
1088.26'
(Proposed)
N78°53'45\"/>

Vacated-Ord 65376
AVENUE
N89°02'15\"/>

Location of Section Lines east of 1/4 Sec. Cor. incorrect on account of error in calculation by City Engineer. Correct location shown in red. - Co. Sur.
 $\Delta = 72.39' - 30'$
 $\Sigma R = 500'$
 $\Sigma T = 33.39'$
 $\Sigma L = 66.69'$

F.M.	10	259	-1
A1	OF	A3	

SEC. 22

T. 2 N.

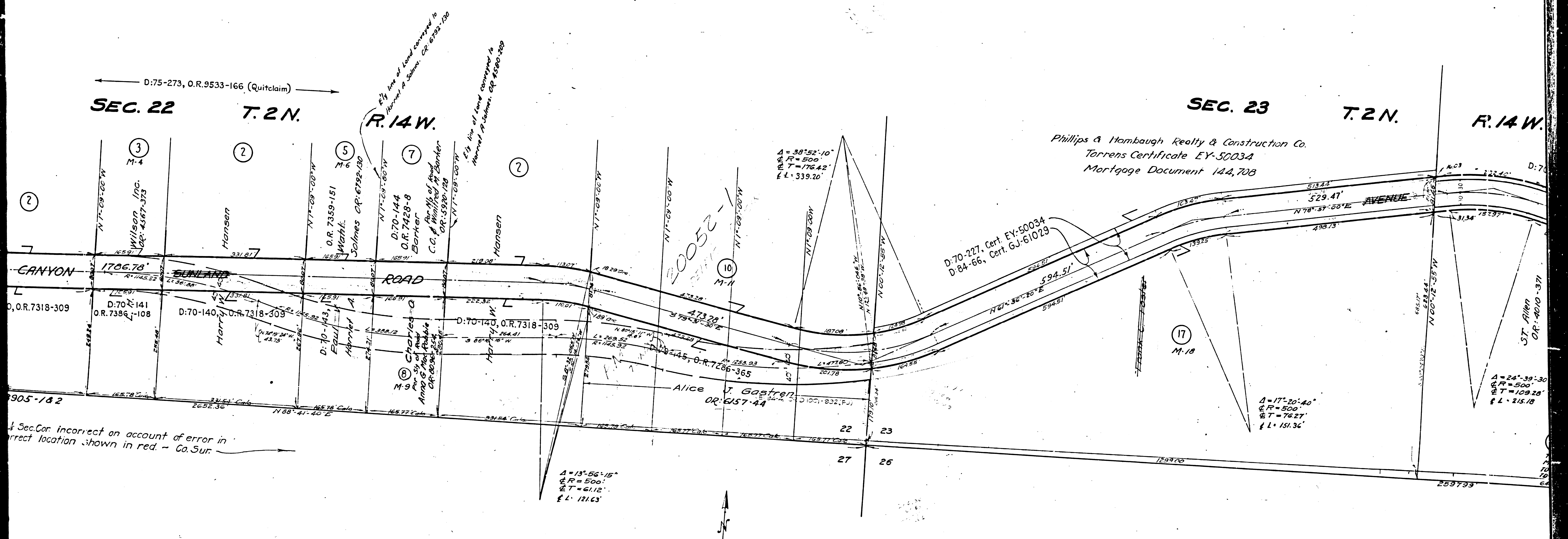
R. 14 W.

SEC. 23

T. 2 N.

R. 14 W.

Phillips & Hambaugh Realty & Construction Co.
Torrens Certificate EY-50034
Mortgage Document 144,708



D:75-273, O.R.9533-166 (Quitclaim)

E 1/4 line of land conveyed to
 Horner & Salinas, O.R. 6792-130
 E 1/4 line of land conveyed to
 Horner & Salinas, O.R. 4580-309

D:70-227, Cert. EY-50034
 D:84-66, Cert. GJ-61029

$\Delta = 38^{\circ}52'10''$
 $\text{C.R.} = 500'$
 $\text{C.T.} = 176.42'$
 $\text{C.L.} = 339.20'$

$\Delta = 17^{\circ}20'40''$
 $\text{C.R.} = 500'$
 $\text{C.T.} = 76.27'$
 $\text{C.L.} = 151.36'$

$\Delta = 24^{\circ}39'30''$
 $\text{C.R.} = 500'$
 $\text{C.T.} = 109.28'$
 $\text{C.L.} = 215.18'$

$\Delta = 13^{\circ}56'15''$
 $\text{C.R.} = 500'$
 $\text{C.T.} = 61.12'$
 $\text{C.L.} = 121.63'$

† Sec. Cor. incorrect on account of error in
 correct location shown in red. - Co. Sur.

F.M.	10	259	-1
A	2	OF	A3

SEC. 23

T. 2 N.

R. 14 W.

Phillips & Hambaugh Realty & Construction Co.
Torrens Certificate EY-50034
Mortgage Document 144,708

$\Delta = 27^{\circ}08'05''$
 $\text{Ch} = 1000'$
 $\text{ET} = 241.32'$
 $\text{L} = 473.59'$

D-70-227, Cert. EY-50034
D-84-F6, Cert. GJ-61029

(17)
M-18

$\Delta = 17^{\circ}20'40''$
 $\text{Ch} = 500'$
 $\text{ET} = 76.27'$
 $\text{L} = 151.36'$

$\Delta = 24^{\circ}39'30''$
 $\text{Ch} = 500'$
 $\text{ET} = 109.28'$
 $\text{L} = 215.18'$

(19)
M-20
M-21
M-22
M-23

$\Delta = 15^{\circ}41'40''$
 $\text{Ch} = 500'$
 $\text{ET} = 68.91'$
 $\text{L} = 136.96'$

(25)
M-26

(24)
Frank F.

$\Delta = 51^{\circ}27'50''$
 $\text{Ch} = 200'$
 $\text{ET} = 96.39'$

$\Delta = 20^{\circ}37'30''$
 $\text{Ch} = 300'$
 $\text{ET} = 54.59'$

Andriano Bissen

R.W. 2550
SUNLAND AVE. (Extension) FROM ELY LINE OF W. 1/2 SEC. 23 T. 2 N. R. 14 W. TO ELY TERMINUS OF EXISTING SUNLAND AVE.
Job Number _____ AY-78335
City Clerks File Number _____ 7239-1927
District Map Number _____ V-1278, V-1493
Date _____ Oct. 1, 1928
Drawn by _____ C.A. Hayden
Checked by _____ C.A.H. and O. Gustad
Requested by _____ City Engineer
Scale: 1" = 100'

F.B. Ref. 12569, 10224 Profile
12905

Shit 52
A-622

F.M. 10 259-1
A3 OF A3