

D: 92-21, O.R. 12221-269  
 D: 92-22, O.R. 12198-315  
 D: 92-43, O.R. 12216-329

C.F. 118

D: 91-184, O.R. 12037-282  
 D: 27-276, O.R. 12068-253 (G.C.)

D: 91-273, O.R. 12251-265  
 D: 91-276, O.R. 12195-283

F.M.	1	0	2	6	6
A	1	OF	A	5	



SEE C.S. B-1279 FOR DEEDS (CITY OF L.A. R/W MAP)

RANCHO SAN PEDRO

C.F. 118

TRACT

M.B. 51-40

ROBIDOUX STREET

PAPEETE STREET

4602

TRACT

M.B. 78-11

6038

YOUNG STREET

K STREET

GRANT STREET

FRIGATE AVENUE

FIGUEROA STREET

STREET

SUBDIVISION OF BLOCK 15

M. R. 72-53

See City Engineer for different center line, established by him in 1926.

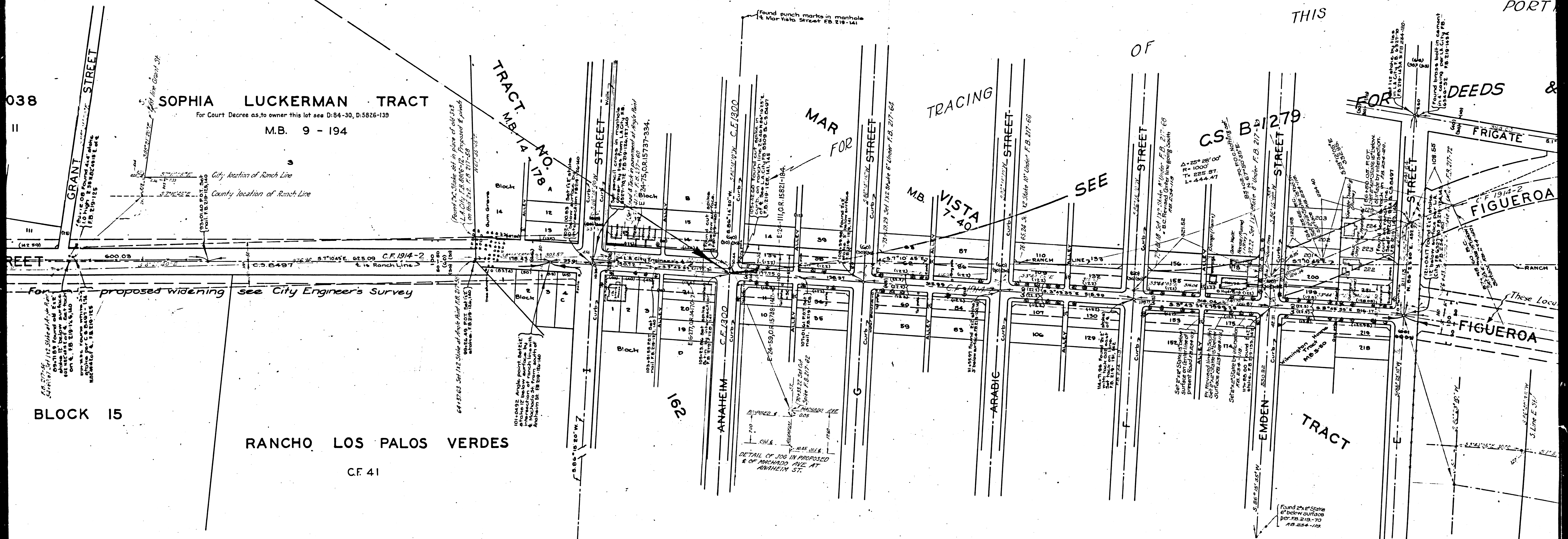
See City Engineer's F.B. 8806-7, 18

PALOS

VERDES

C.F. 41

F.M.	10266
A3	OF A5



038

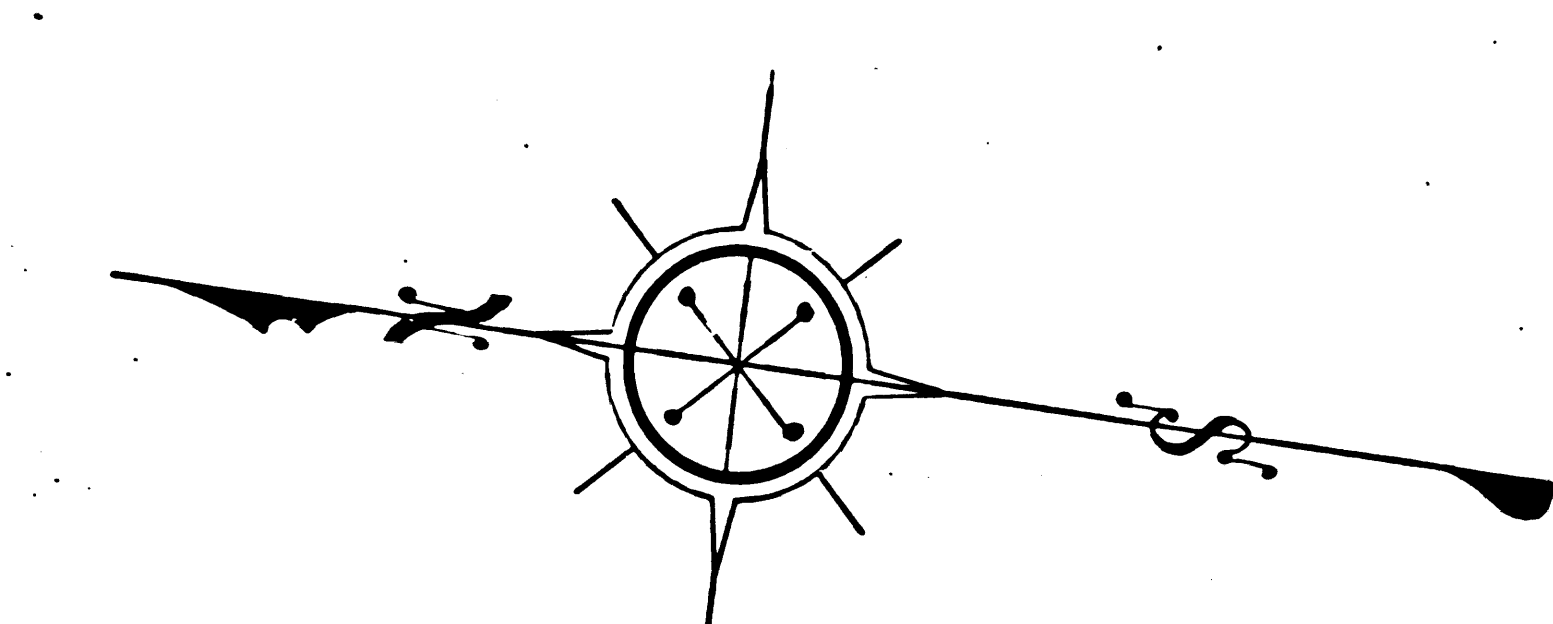
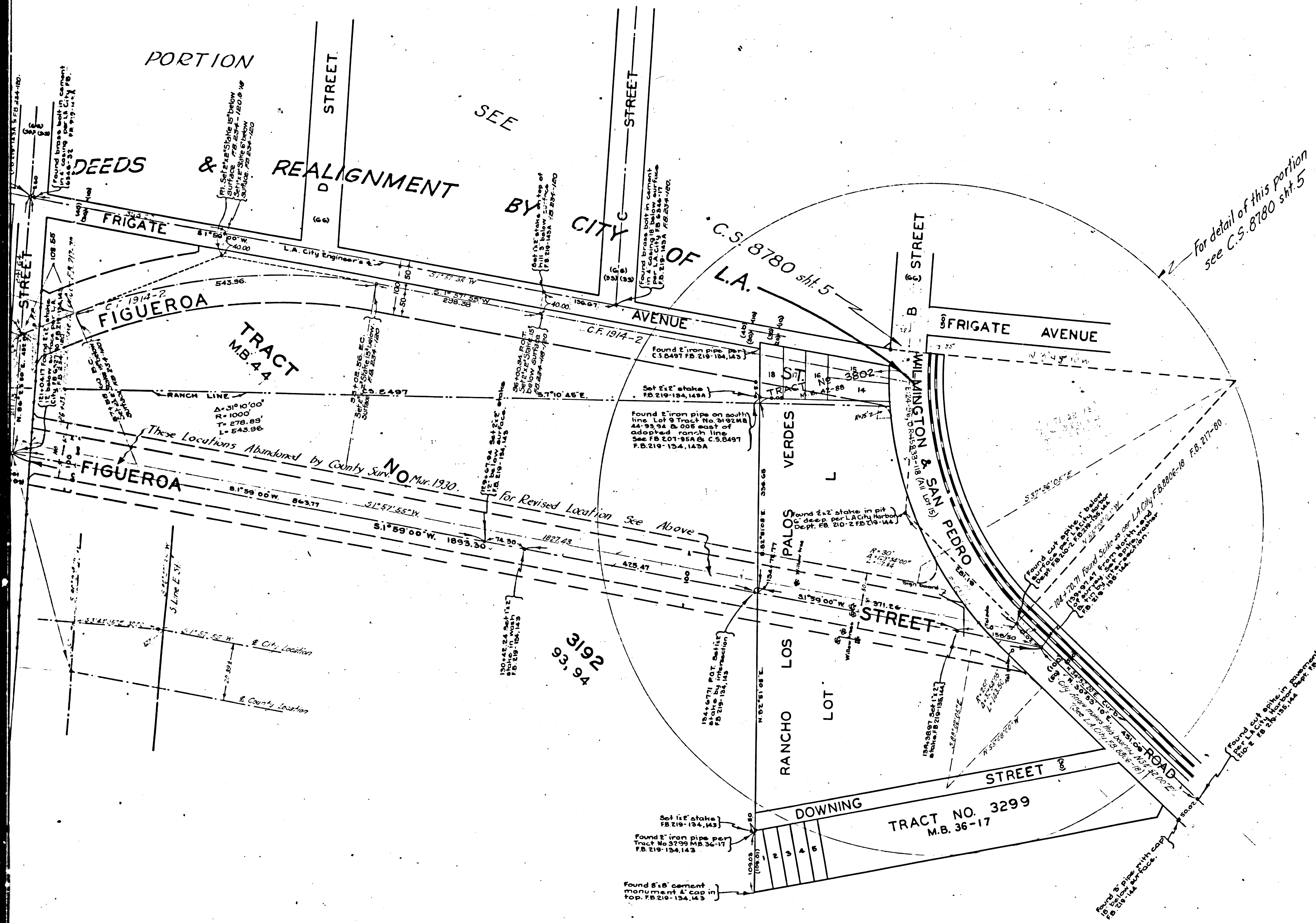
II

**SOPHIA LUCKERMAN TRACT**  
 For Court Decree as to owner this lot see D:84-30, D:5826-139  
 M.B. 9 - 194

BLOCK 15

**RANCHO LOS PALOS VERDES**  
 C.F. 41

F.M.	10266
A 4	OF A 5



MAP OF  
**FIGUEROA STREET**  
 FROM  
**LONG BEACH & REDONDO BEACH ROAD**  
 TO  
**WILMINGTON & SAN PEDRO ROAD**

COUNTY SURVEYOR'S MAP NO. 8780 <sup>EM10276</sup> B-266  
 SHEET NO. 3 OF 4 SHEETS  
 SCALE: 1 INCH = 100 FEET  
**J.E. ROCKHOLD** COUNTY SURVEYOR  
 SURVEYED **JULY 1926**

SURVEYED UNDER INSTRUCTIONS OF THE BOARD OF SUPERVISORS PER ORDER DATED SEP. 24, 1923.  
 BEARINGS BASED ON THE BEARING OF FIGUEROA STREET AS SHOWN ON COUNTY SURVEYOR'S MAP NO. 8780 SHEET 2

F.B. 219 - 116 TO 146  
 FIELD WORK BY C.V. CRUMLEY  
 OFFICE WORK BY R.B. EMMOTT  
 CHECKED BY D.M. FINLEY  
 Sht. 23  
 Sht. 28

*Red center line was established for L.A. County, A-1, No. 31 and follows L.A. City opening and widening map AL 225. Points were set over from L.A. City & of existing streets as shown in L.A. City, F.B. 8806-7, 18 and F.B. 8509-22, 26, 42, 44. Distances on % in F.B. 217 were chained. Angles were taken from City notes.*

F.M. 10266  
 A 5 OF A 5