

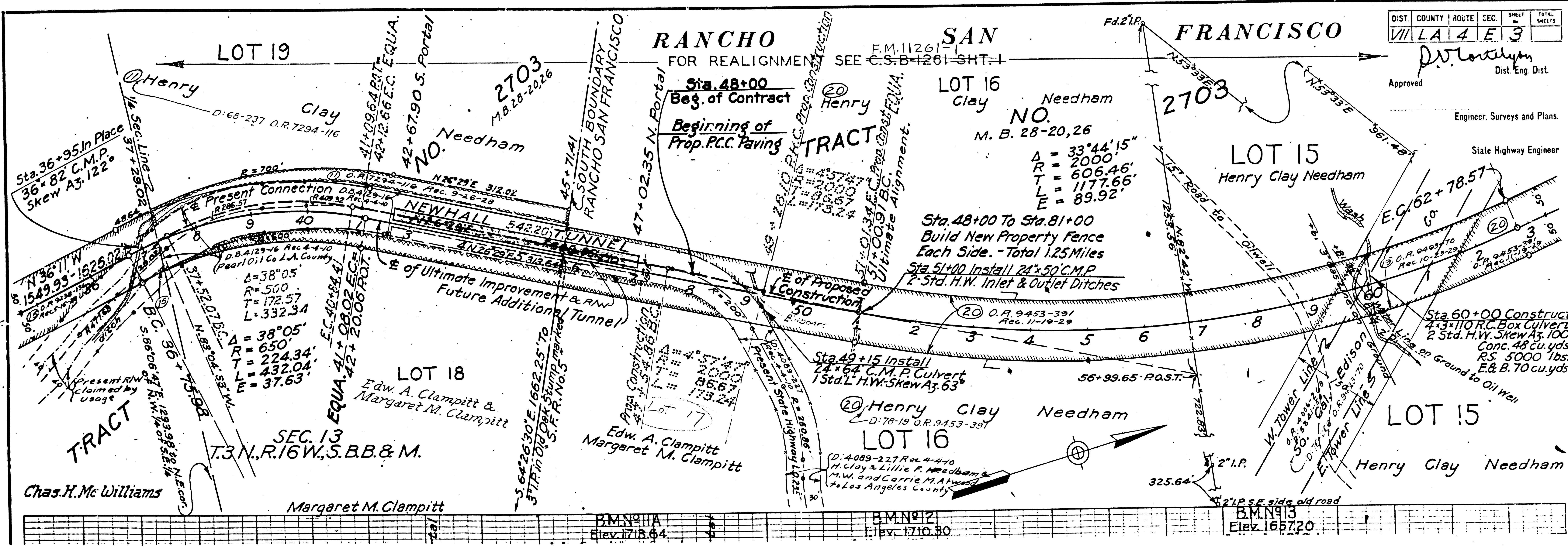
DIST. No.	STATE	PROJ. No.	FOUNDER	YEAR	SHEET No.	TOTAL SHEETS
2	CAL.					

DIST.	COUNTY	ROUTE	SEC.	SHEET	TOTAL SHEETS
VII	LA	4	E	3	

Approved: *D.W. Montalym*  
Dist. Eng. Dist.

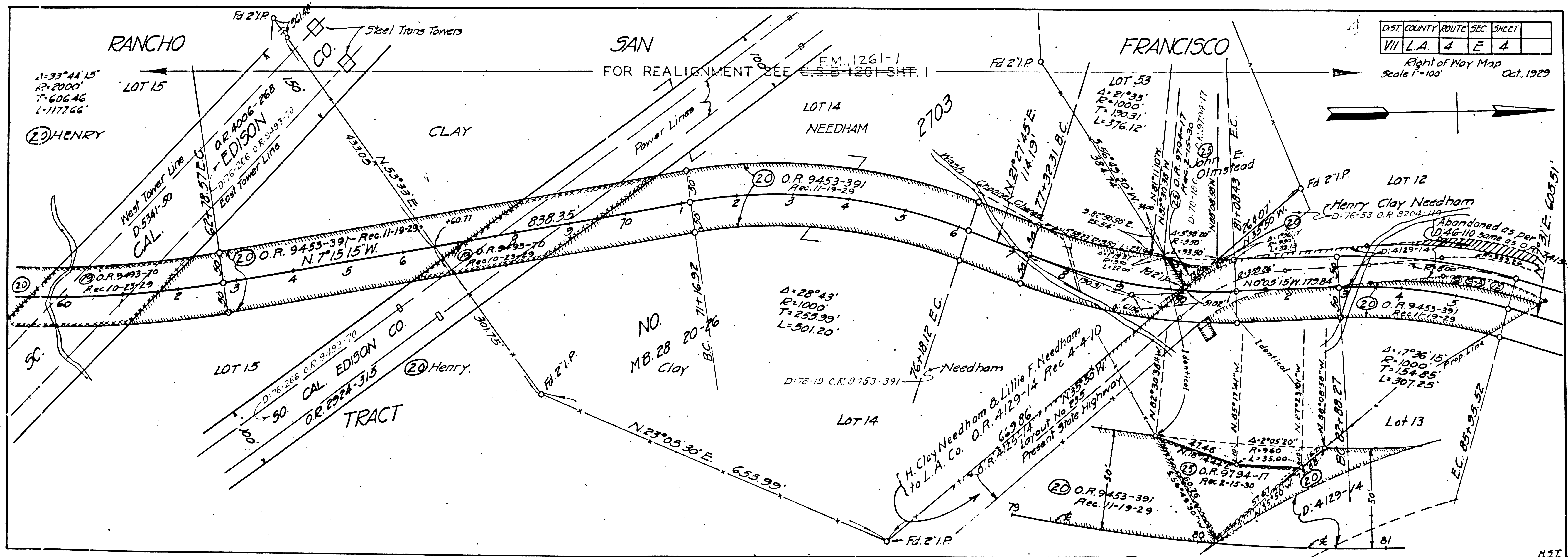
Engineer, Surveys and Plans.

State Highway Engineer



F.M.	10283	
A1	OF	A3





Abandoned by State  
 D: 26-110 O.R. 7415-16 E  
 Decided by Court  
 D: 76-72 C.R. 6218-303

F.M.	1	0	2	8	3
A	2	OF	A	3	



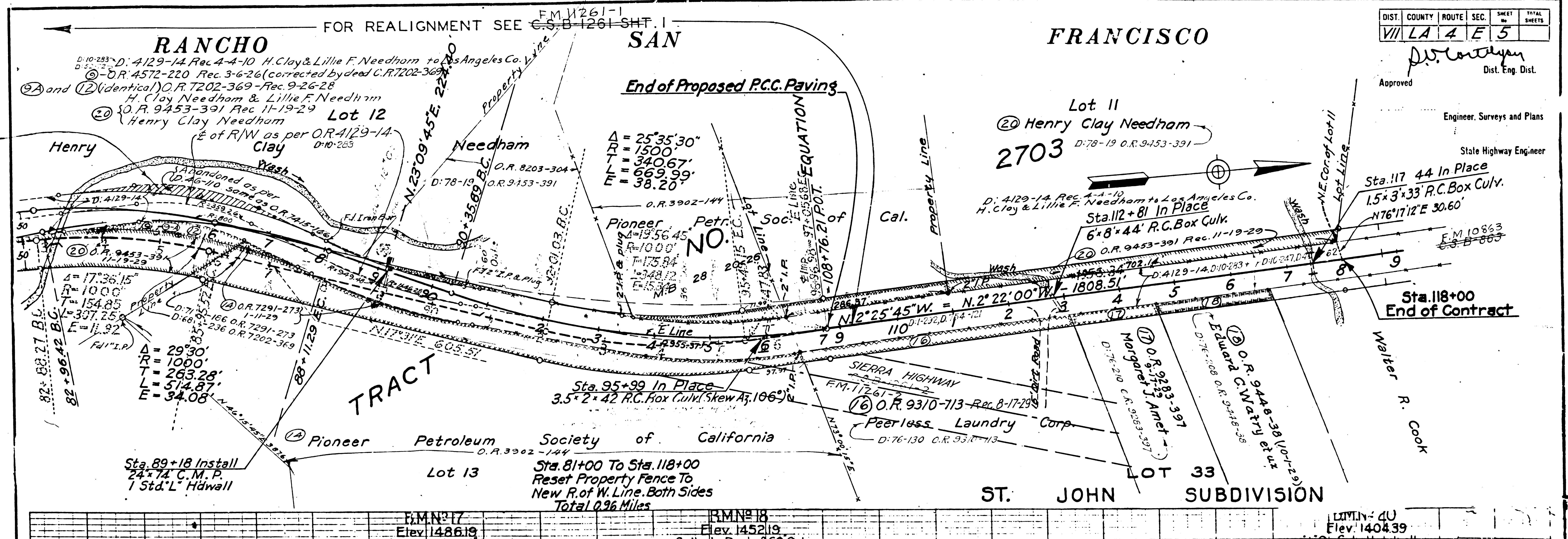
FED. ROAD DIST. NO.	STATE	PROJ. NO.	SHEET NO.	TOTAL SHEETS
2	CAL.			

DIST.	COUNTY	ROUTE	SEC.	SHEET NO.	TOTAL SHEETS
VII	LA	4	E	5	

*J. D. Cortright*  
 Approved  
 Dist. Eng. Dist.

Engineer, Surveys and Plans

State Highway Engineer



Abandoned by State  
 D:41-110 O.R. 7415-16  
 Decided by County  
 D:76-72 O.R. 8218-303

F.M. #17 Elev. 1486.19	F.M. #18 Elev. 1452.19	ELEVATION 40 Elev. 1404.39		
---------------------------	---------------------------	-------------------------------	--	--

INDEX 62

San Fernando Road name established - D:49-112  
 Part old San Fernando Road changed to Clamplitt Road - D:49-112

F.M.	1	0	2	8	3
A	3	OF	A	3	