

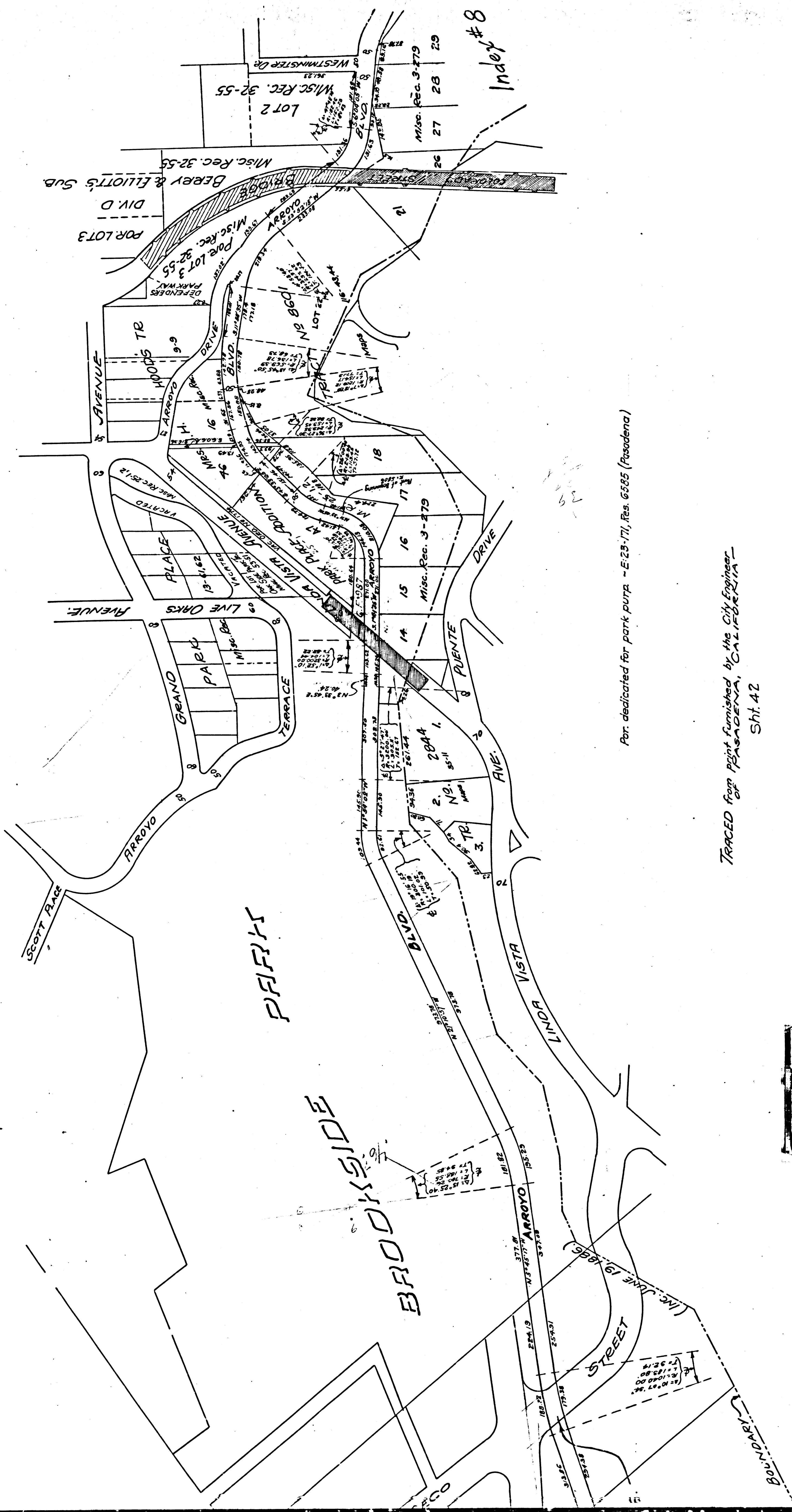
F.M.	103	41
A1	OF	A2

FILED MAP NO. 10341

FILED MAP NO. 10341

FILED MAP NO. 10341

FILED MAP NO. 10341



Por. dedicated for park purp. - E28-171, Res. 6585 (Pasadena)

TRACED from plat furnished by the City Engineer -
S.H.I. 42

F.M.	10341
A 2	OF A 2