

F.M.	10349
A1	OF A10

AVENUE STREET

30'

BRADLEY'S STREET

VACATED BY THE BOARD OF SUPERVISORS ROAD BOOK 11, PAGE 47.

FRACTIONAL BLOCK  
239

THE

205

Norris  
30'  
30'  
Ave.

VACATED BY THE BOARD OF SUPERVISORS ROAD BOOK 7, PAGE 45.

S. 48° 43' 20" W

VACATED BY THE BOARD OF SUPERVISORS ROAD BOOK 7, PAGE 45.

STREET AVENUE

WESTERLY BOUNDARY LINE OF LOS ANGELES LAND AND WATER CO'S SUBDIVISION

D: 70-221 O.R. 7416-178

D: 70-215, O.R. 7477-40

N. 48° 43' 20" E.

O.R. D 2696 - 439

O.R. 979-56, O.R. 9700-310

O.R. D 2037-152

ORD 3173-122

LOS ANGELES LAND AND WATER CO'S SUBDIVISION

5

6

7

8

OF A PART OF MACLAY RANCHO

MAPS BOOK 3 PAGES 17 AND 18

BLUCK

F.M. 10349

A 2 OF A 10

MACLAY

169

VACATED BY THE BOARD OF SUPERVISORS ROAD BOOK II, PAGE #7

VACATED BY THE BOARD OF SUPERVISORS ROAD BOOK II, PAGE #7

VACATED BY THE BOARD OF SUPERVISORS ROAD BOOK 7, PAGE #5

BOUNDARY LINE OF LOS ANGELES LAND AND WATER CO'S SUBDIVISION

VENUE

REMSEN STREET AVENUE

D:70-236, O.R. 7387-259

D:70-221, O.R. 7416-178

D:70-224

O.R. 7420-173

9

10

11

12

1

F.M. 10349

A3 OF A10



RANCHO

139

MISCEL

VACATED BY THE BOARD OF SUPERVISORS ROAD BOOK 11, PAGE 47

VACATED BY THE BOARD OF SUPERVISORS ROAD BOOK 7, PAGE 45.

S 48° 43' 20" W.

MONTAGUE

AVENUE STREET

NORTHWESTERLY BOUNDARY LINE OF LOS ANGELES LAND AND WATER CO'S SUBDIVISION

2887.92' 9596-82

Fence 9597

LOS ANGELES LAND AND WATER CO'S SUBDIVISION

D:70-225, O.R.7470-41

OF A PART OF MACLAY RANCHO

MAPS BOOK 3 PAGES 17 AND 18

2

F.M.	1	0	3	4	9
A	4	OF	A	1	0

MISCELLANEOUS RECORDS BOOK 37 PAGES 5 TO 16 BOTH INCLUSIVE

III

THE

85

Fence goes thru to Osborne Ave 9597-155

VACATED BY THE BOARD OF SUPERVISORS ROAD BOOK 7, PAGE 45

VACATED BY THE BOARD OF SUPERVISORS ROAD 1266

Line of Old

MONTAGUE

N 48° 43' 20" E

Vacated-Ord No. 88,749

VACATED BY THE BOARD OF SUPERVISORS ROAD 1260

370.5 370.5 339.0

Fence 9597-155, 156

59.7

52.5

58.6

D: 70-225, O.R. 7470-41  
FENCE 85 BRANFORD IN 9597-155

MANSFIELD DRONFIELD  
BOUNDARY LINE OF LOS ANGELES LAND AND WATER CO'S SUBDIVISION  
VACATED BY THE BOARD OF SUPERVISORS ROAD BOOK 7, PAGE 45

THE

FRACTIONAL BLOCK

86

9  
D: 79-203, O.R. 10064-228 (Quitclaim)

701.4

701.4

D: 70-225, O.R. 7470-41  
FENCE 85 BRANFORD IN 9597-155

MANSFIELD DRONFIELD  
BOUNDARY LINE OF LOS ANGELES LAND AND WATER CO'S SUBDIVISION  
VACATED BY THE BOARD OF SUPERVISORS ROAD BOOK 7, PAGE 45

BOUNDARY LINE OF LOS ANGELES LAND AND WATER CO'S SUBDIVISION AS LOCATED BY PROPORTIONAL RECORD BETWEEN BRANFORD AVE. AND THE  
310.5' Record  
LOCATION OF SOUTHEASTERLY LINE OF FRACTIONAL BLOCK 86 OF THE MACLAY RANCHO BEING THE NORTHWESTERLY LINE OF THE SOUTHEASTERLY 85 ACRES  
310.5' Record  
Fence shown in 9597-155  
310.5' Record

F.M. 10349  
A5 OF A10

BRANFORD AVENUE STREET

19

20

21

4

5

THE  
85

MACLAY

61

1260' Line of old Fence Posts 9597-155  
THE BOARD OF SUPERVISORS ROAD BOOK 7, PAGE 45  
1314.93  
Vacated-Ord. No. 88,749  
THE BOARD OF SUPERVISORS ROAD BOOK 7, PAGE 45  
1260'

1260' VACATED BY THE BOARD OF SUPERVISORS ROAD BOOK 7, PAGE 45  
1312.71'  
STREET AVENUE  
VACATED BY THE BOARD OF SUPERVISORS ROAD BOOK 7, PAGE 45  
1260'

MACLAY

RANCHO

IONAL BLOCK  
86

62

MISCELLANEOUS RECORDS BOOK 37 PAGES 5 TO 16 BOTH INCLUSIVE

TEN BRANFORD AVE. AND THEIR MONUMENTS SET ALONG MONTAGUE AVE.  
1200 FT.  
310.5 Record

22

21

Vacated-Ord. No. 88,749  
BRANFORD ST. AVENUE

Vacated-Ord. No. 88,749  
MULHOLLAND  
STONEHURST

CONCRETE PAVEMENT  
WITH OILED SIDE STREETS

C.S. B. 1880-7  
11/11/1880-1

Rec. 54980

11/11/1880-1

11/11/1880-1

11/11/1880-1

11/11/1880-1

11/11/1880-1

11/11/1880-1

11/11/1880-1

11/11/1880-1

11/11/1880-1

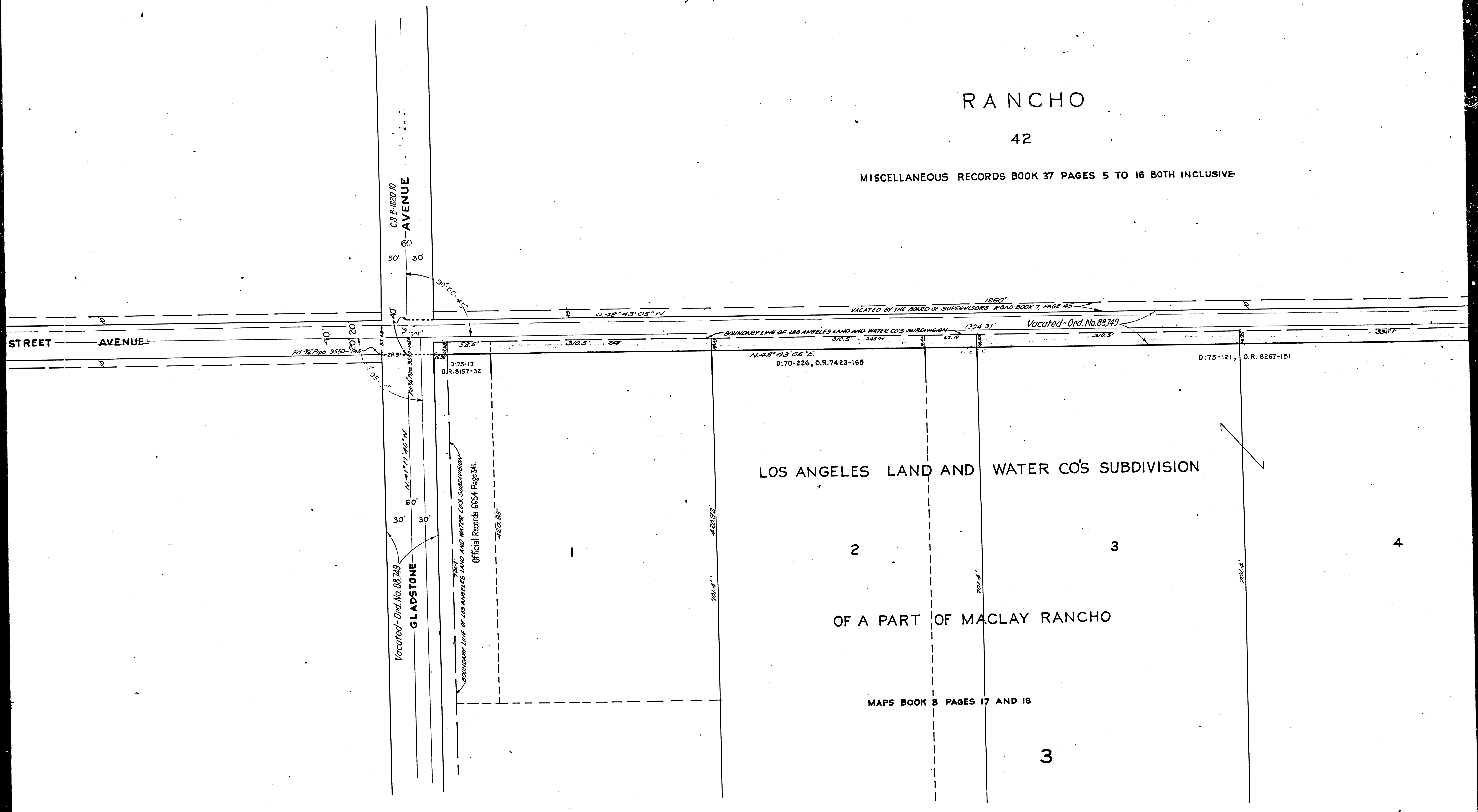
F.M. 10349  
A 6 OF A 10



RANCHO

42

MISCELLANEOUS RECORDS BOOK 37 PAGES 5 TO 16 BOTH INCLUSIVE



F.M.	10	34	9
A7	OF	A10	

T H E

FRACTIONAL BLOCK

26

MAC

STREET AVENUE

C.S. B. 1880-10

STREET AVENUE

ELDRIDGE AVENUE

Vacated - Ord. No. 88,749  
C.S. B. 1350-19

30' 30'

30' 30'

6" Cement Mant. 3550-128, 3572-82  
Set 2" in position of 1 1/2" Pipe by County Surveyors  
7/25 C.S. 7687

6" Cement Mant. 3550-128, 3572-128 1260'

3550-128  
3572-78  
6" Cement Mant.

MONTAGUE

C.S. B. 1880-10  
F.M. 11830-11

Vacated - Ord. No. 88,749

1397.08'

D. 75-121, O.R. 8267-151  
1987/2

BOUNDARY LINE OF LOS ANGELES LAND AND WATER C&G DIVISION  
FENTON  
Vacated - Ord. No. 88,749

30' 30'

30' 30'

6" Cement Mant. 3572-78

MISCELLANEOUS RECORDS BOOK 37 PAGES 5 TO 16 BOTH INCLUSIVE

FRACTIONAL BLOCK

27

F.M.	10349
A8	OF A10

4

7

8



MACLAY

FRACTIONAL BLOCK  
14

RANCHO  
FRACTIONAL BLOCK  
14

TUJUNGA

AVENUE

C.S.B. 1890-19

Vacated - Ord. No. 88749  
C.S.B. 1930-19  
6' ELDRIDGE AVENUE STREET

756.67' STREET AVENUE

VACATED BY THE BOARD OF SUPERVISORS ROAD BOOK 13 PAGE 237  
355.06'

FRACTIONAL BLOCK  
27

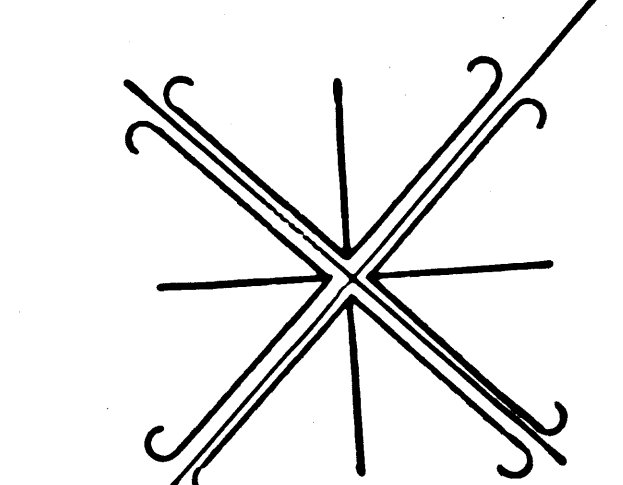
VALLEY

AVENUE

CLYBOURN

Vacated - Ord. No. 88749

C.S.B. 1890-19

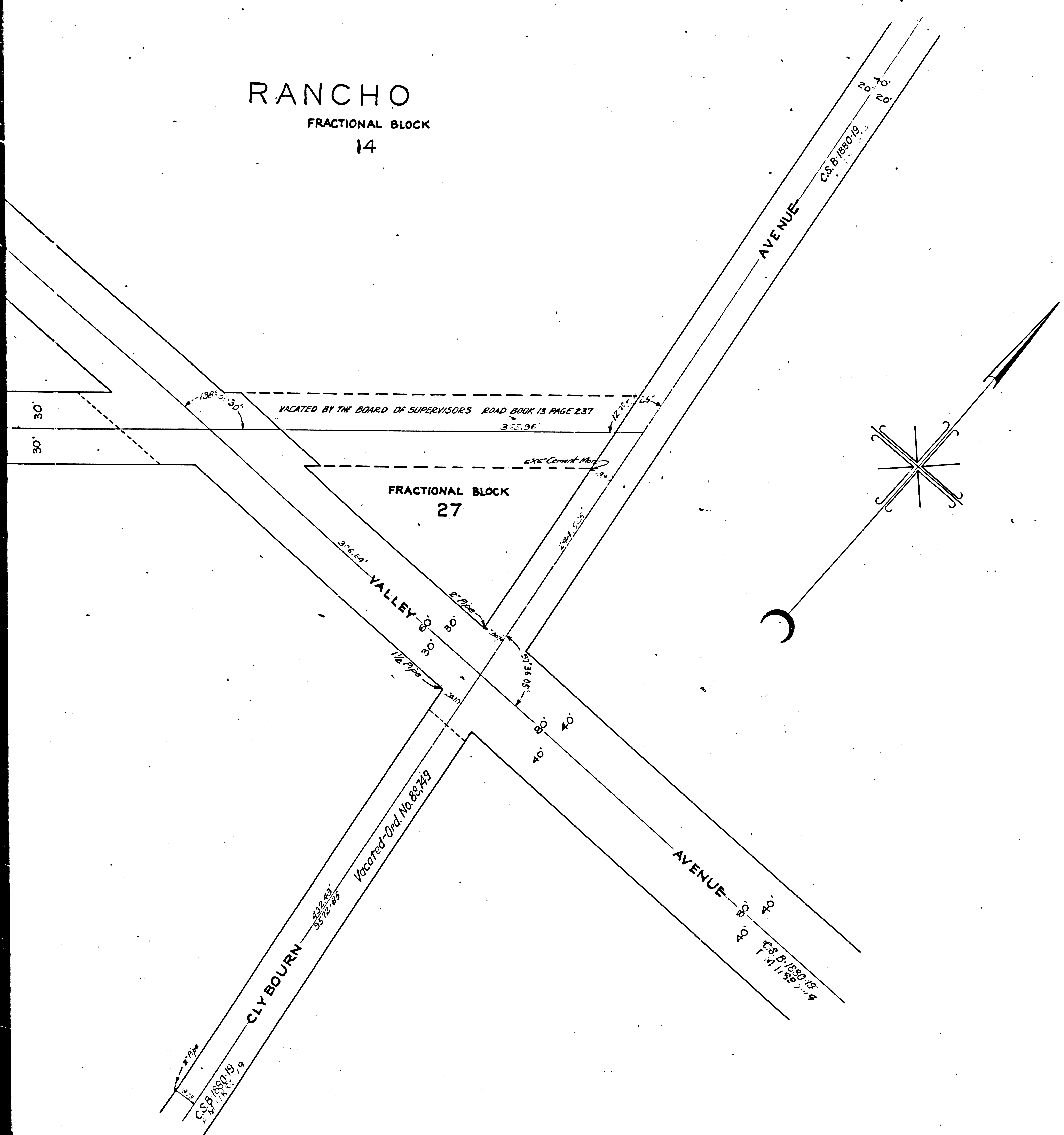


RECORDS BOOK 37 PAGES 5 TO 16 BOTH INCLUSIVE

FRACTIONAL BLOCK  
27

F.M.	1	0	3	4	9
A	9	OF	A	10	

RANCHO  
FRACTIONAL BLOCK  
14



SUPPLEMENTAL MAP SHOWING  
CENTER LINE STUDY  
of  
MONTAGUE AVENUE

FROM CLYBOURN AVENUE  
TO SAN FERNANDO ROAD  
in the City of Los Angeles.

JOHN C. SHAW, CITY ENGINEER — DEC. 1927. SCALE: 1 INCH = 50 FEET

NOTE:  
Land to be decided for st. purposes shown colored red.  
Land to be vacated shown colored yellow.  
Adjusted field work shown in brown.

*Traced*  
FROM CITY ENGINEER'S MAP NO. AL315 BY E. POGGIONE  
CHECKED BY H.D. HOUSTON MARCH-1929.

Sht. 53

Mulholland Street changed to Stonehurst Ave. Ord. 66213  
For Report by E.T. Markey, Assistant Location Engineer,  
County Surveyors Office - see E-19-87.

F.M.	1	0	3	4	9
A	1	0	OF	A	1
	0			0	

FILED MAR 10 1928

FILED MAR 10 1928