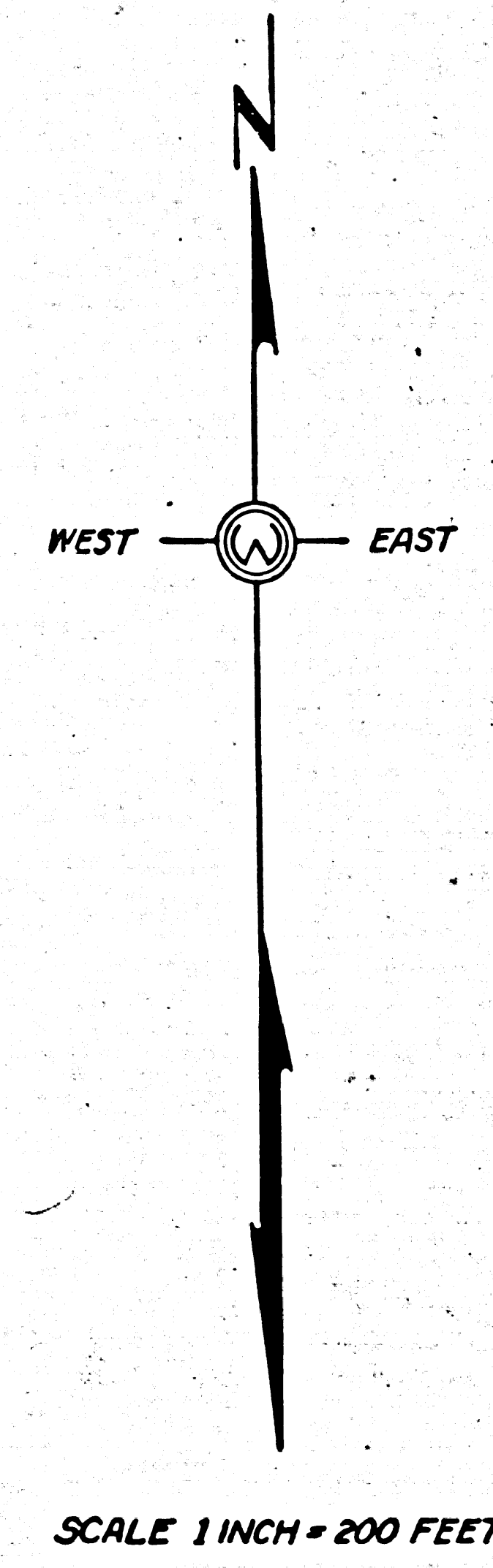
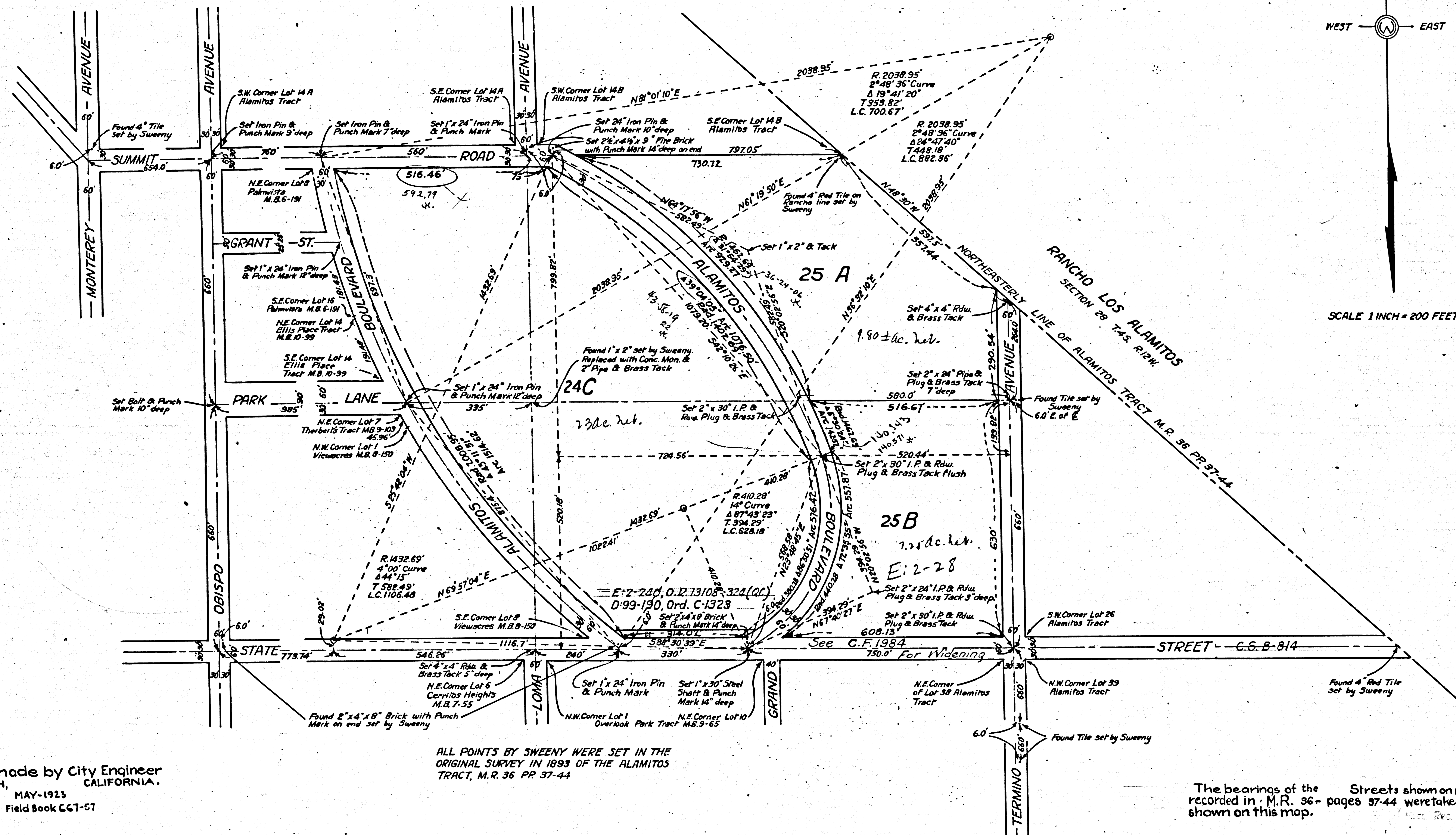


A SURVEY AND PLAT OF LOTS 24C, 25A
AND 25B OF THE ALAMITOS TRACT,
AS RECORDED IN BOOK 36, PAGES 37
TO 44, MISCELLANEOUS RECORDS
OF COUNTY OF LOS ANGELES,
STATE OF CALIFORNIA.
Sht. 30



Survey made by City Engineer
LONG BEACH, CALIFORNIA.
MAY-1923
Field Book C67-57

ALL POINTS BY SWEENEY WERE SET IN THE
ORIGINAL SURVEY IN 1893 OF THE ALAMITOS
TRACT, M.R. 36 PP 37-44

The bearings of the Streets shown on map of Alamitos Tract
recorded in M.R. 36- pages 37-44 were taken as basis of bearings
shown on this map.

FB 667

F.M. 10562