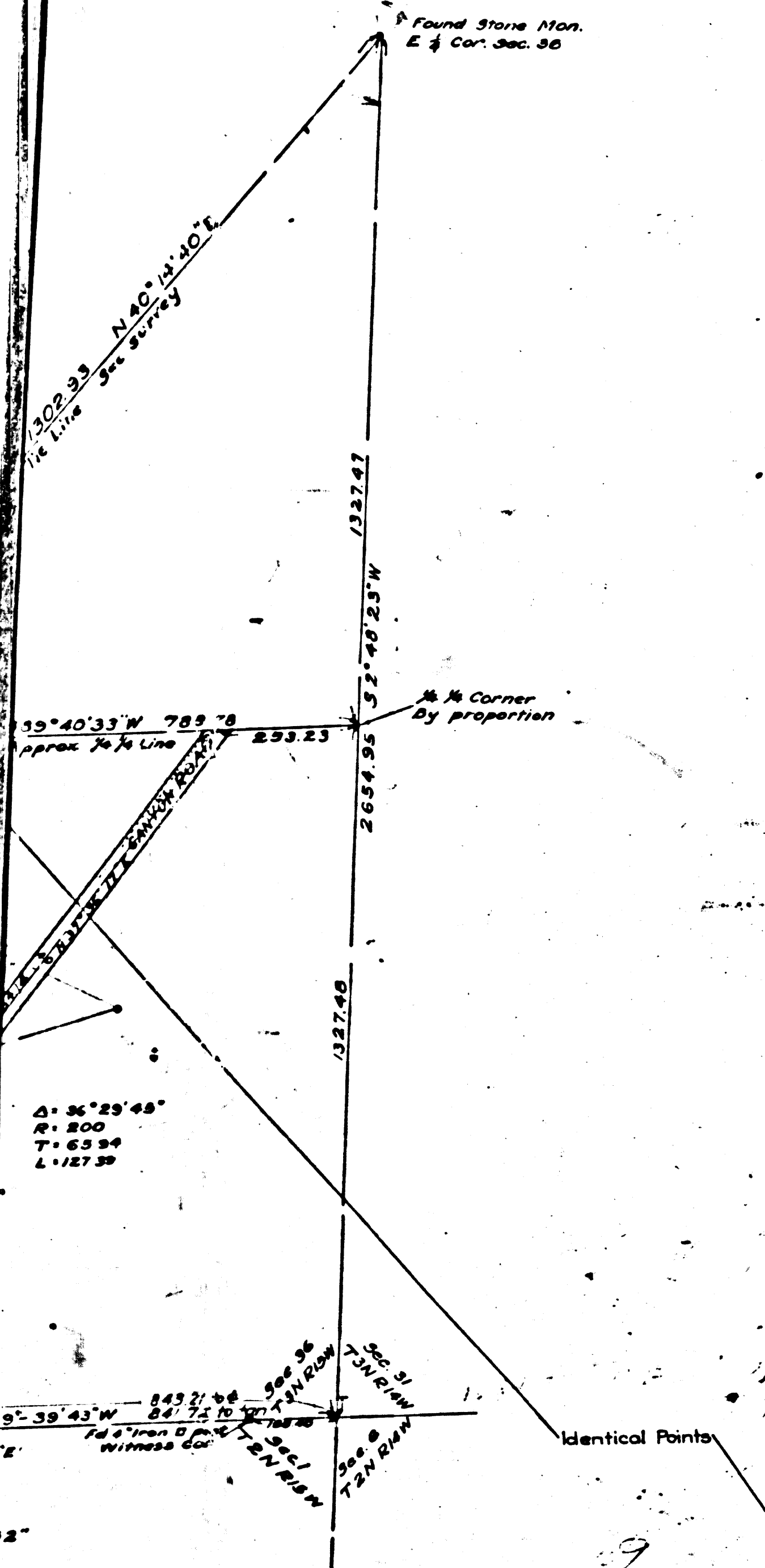


2-2134

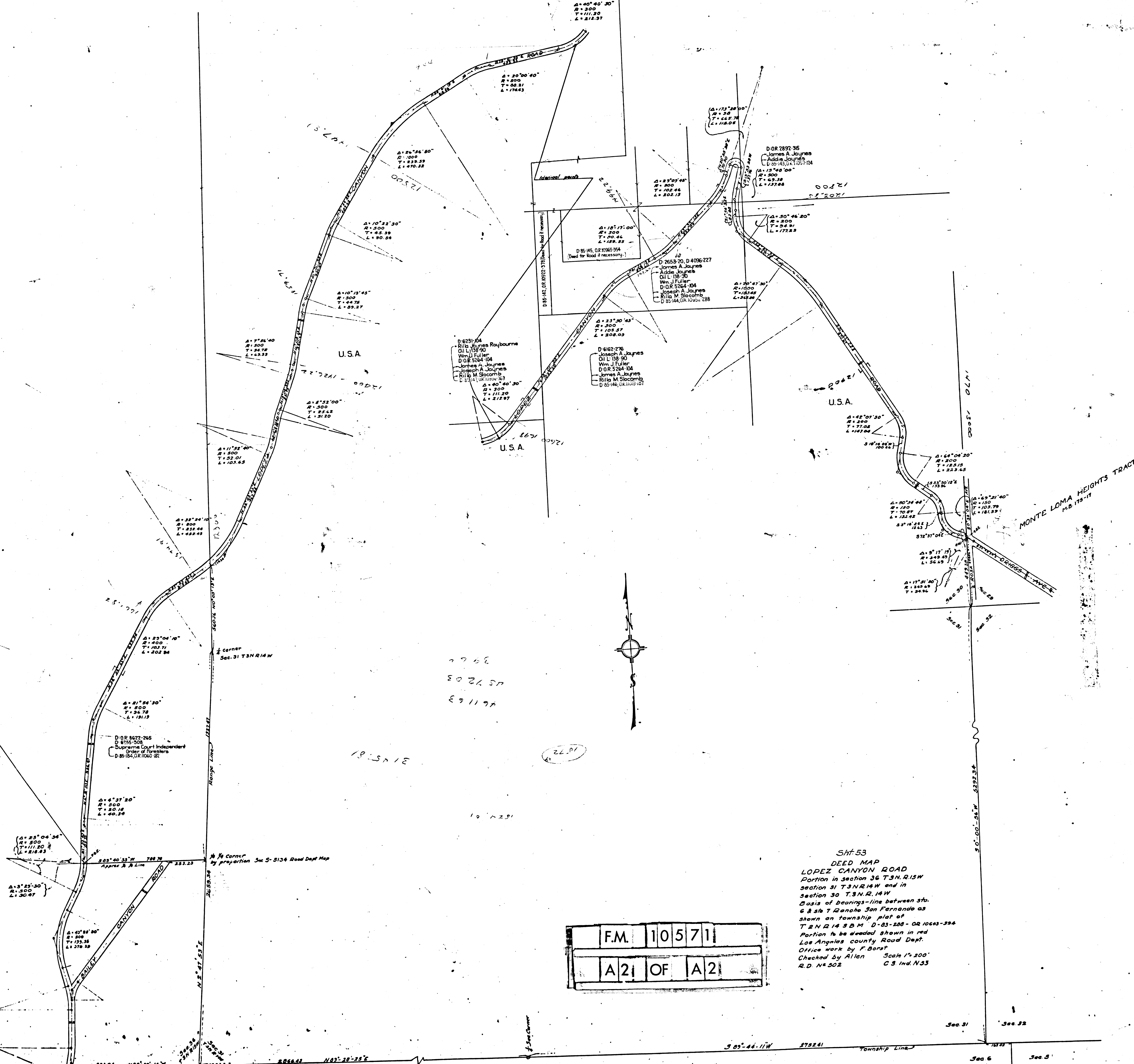
C.S. INDEX N-23
DEED MAP - CITY OF LOS ANGELES TO NORTHERLY END
GOBES CANYON ROAD



DEED MAP
LOPEZ CANYON ROAD
Portion in Sec. 17, 2N, 21SW, S.B.M.
Basis of bearings-line between sta.
6 & sta. 7 Rancho San Fernando as
shown as Township plot of T.2N.R.14.S.B.M.
Portion to be deeded shown in red
Los Angeles county Road Dept.
Office work by F. Borst
Checked by Allen. Scale 1"=200'
R.D. No. 502 C.S. Ind. N-53

LOPEZ CANYON ROAD
DEED MAP - CITY OF LOS ANGELES TO NORTHERLY END
C.S. INDEX N-23
R.D. No. 502

LOPEZ CANYON ROAD
PORTION IN SECTION 36 T.3N. R.15W
C.S. INDEX N-23
R.D. No. 502

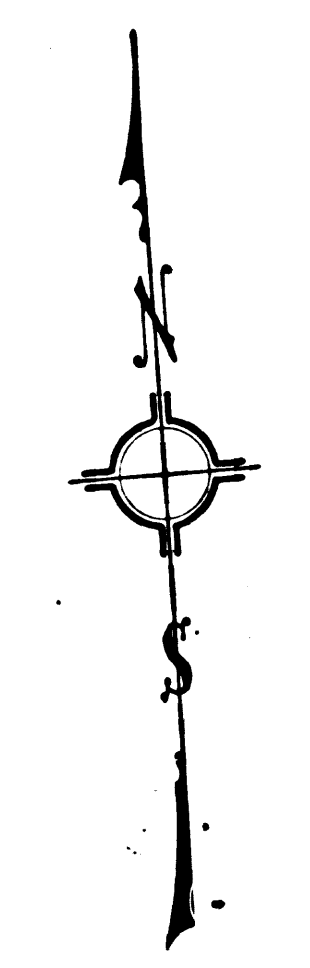


U.S.A.

U.S.A.

U.S.A.

MONTE LOMA HEIGHTS TRACT
P.L.B. 118-117



F.M. 10571
A21 OF A2

Shf. 53
DEED MAP
LOPEZ CANYON ROAD
Portion in section 36 T.3N. R.15W
section 31 T.3N. R.14W and in
section 30 T.3N. R.14W
Basis of bearings-line between sta.
6 & sta. 7 Rancho San Fernando as
shown as Township plot of
T.2N. R.14. S.B.M. D-23-208 - 02, 10643-394
Portion to be deeded shown in red
Los Angeles county Road Dept.
Office work by F. Borst
Checked by Allen. Scale 1"=200'
R.D. No. 502 C.S. Ind. N-53