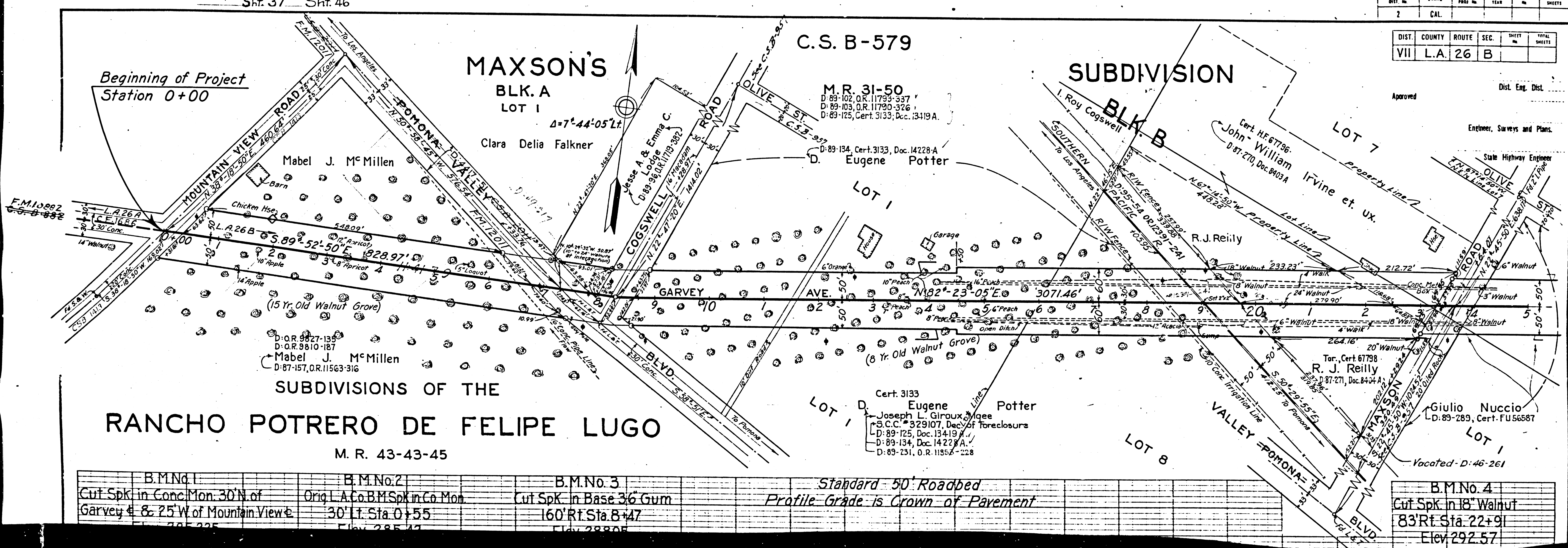


Sht. 37 Sht. 46

FED. ROAD DIST. NO.	STATE	FED. AID PROJ. NO.	FISCAL YEAR	SHEET NO.	TOTAL SHEETS
2	CAL.				
DIST. COUNTY ROUTE SEC.		SHEET NO.		TOTAL SHEETS	
VII L.A. 26 B					



Approved _____
 Dist. Eng. Dist. _____
 Engineer, Surveys and Plans.
 State Highway Engineer

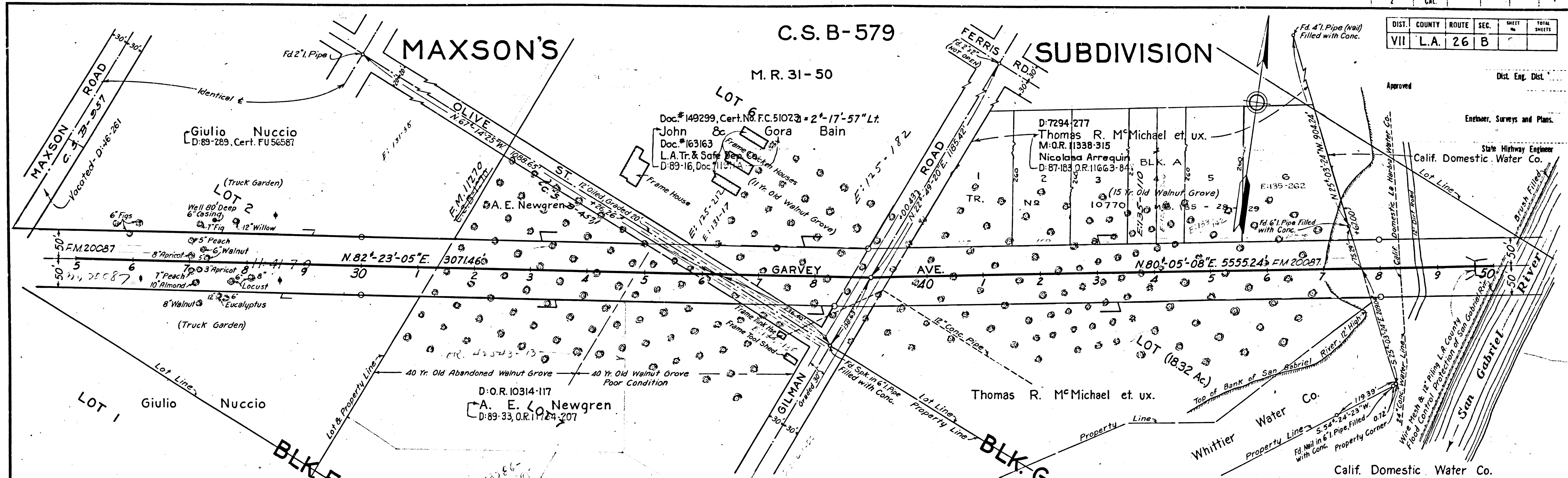
**SUBDIVISIONS OF THE
 RANCHO POTRERO DE FELIPE LUGO**
 M. R. 43-43-45

B.M.No. 1 Cut Spk. in Conc. Mon. 30' N. of Garvey & 25' W. of Mountain View &	B.M.No. 2 Orig. L.A. Co. B.M. Spk. in Co. Mon. 30' Lt. Sta. 0+55	B.M.No. 3 Cut Spk. in Base 36 Gum 160' Rt. Sta. 8+47	Standard 50' Roadbed Profile Grade is Crown of Pavement	B.M.No. 4 Cut Spk. in 18" Walnut 83' Rt. Sta. 22+91 Elev. 292.57
---	--	--	--	---

F.M. 10579
 A1 OF A4

FED. ROAD DIST. NO.	STATE	FED. AID PROJ. NO.	FISCAL YEAR	SHEET NO.	TOTAL SHEETS
2	CAL.				

DIST.	COUNTY	ROUTE	SEC.	SHEET NO.	TOTAL SHEETS
VII	L.A.	26	B		



Approved _____
Dist. Eng. Dist. _____

Engineer, Surveys and Plans. _____

State Highway Engineer _____
Calif. Domestic Water Co.

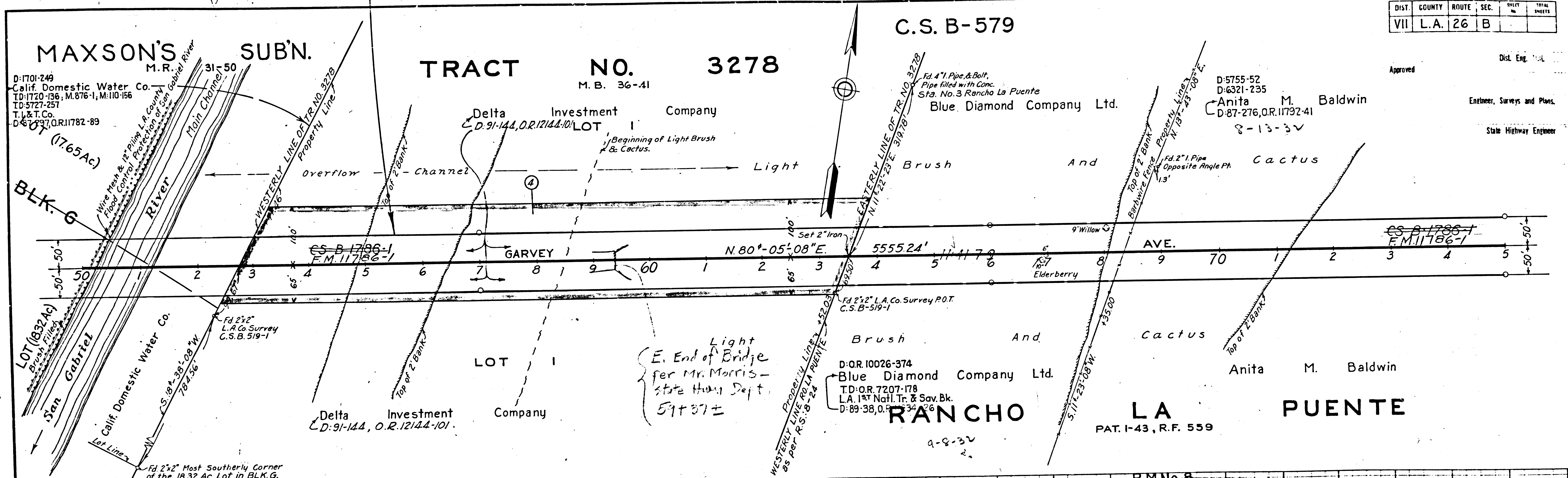
49+73±
W. end Bridge
per Mr. Morris
State Hwy Dept
a.e.g.
2-6-40

BM No. 5	BM No. 6
Chisled on W. end of Conc. Apron 122' Rft. Sta. 37+36 Elev. 258.64	Notched Top of Pipe at S.W. Cor. Pump Hse. 253' Rft. Sta. 46+96 Elev. 294.00

F.M. 10579
A 2 OF A 4

Superior Court Case No. 347631
 Suit for Condemnation
 Filed Oct. 10th, 1932
 People of the State of Cal., Plff.
 vs
 G.L. Powell, et al, Defendants.
 Note: Suit covers parcels 1 to 5 as shaded brown on this map and on C.S. B-519, Sht. 2. Order authorizing Plff. to take immediate possession of parcels 1 to 5, rendered Oct. 10th 1932. Case dismissed as to parcel 1, Apr. 27, 1933. Case dismissed as to parcels 2, 3, 4 and 5, Mar. 2, 1934.

DIST.	COUNTY	ROUTE	SEC.	SHEET NO.	TOTAL SHEETS
VII	L.A.	26	B		



47+73 ±
 v.l. end bridge
 per Mr. Morris -
 State Hwy Dept.
 a.p.c.
 2-5-46

Approved
 Disl. Eng.
 Anita M. Baldwin
 Engineer, Surveys and Plans.
 State Highway Engineer

BM No. 7	BM No. 8
Flattened End 2" Pipe Flush in Rock Mound	1/2" Iron Pipe 13' East of fence
116 Rt. Sta. 60+62	[47] Lt. Sta. 68+93
	Elev. 299.18

F.M. 10579
 A3 OF A4

Sht. 46

FED. ROAD DIST. NO.	STATE	FED. AID PROJ. NO.	FISCAL YEAR	SHEET NO.	TOTAL SHEETS
2	CAL.				

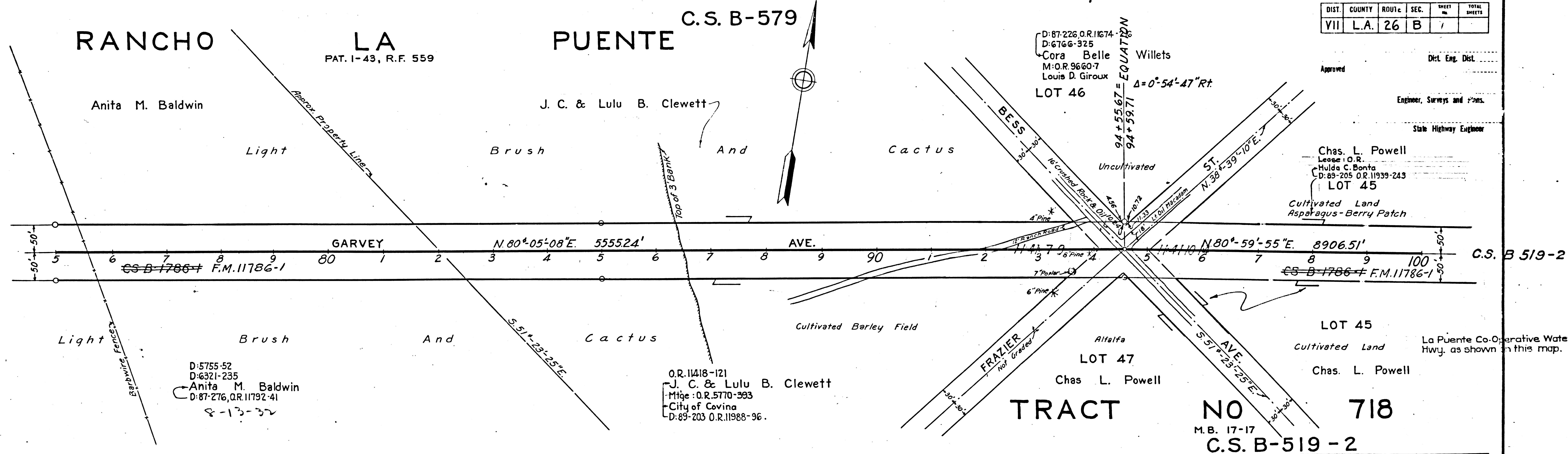
DIST.	COUNTY	ROUTE	SEC.	SHEET NO.	TOTAL SHEETS
VII	L.A.	26	B	7	

Approved _____
 Dist. Eng. Dist.
 Engineer, Surveys and Plans.
 State Highway Engineer

Chas. L. Powell
 Lessee: O.R.
 Hilda C. Bonta
 D: 83-205 O.R. 11939-243
 LOT 45
 Cultivated Land
 Asparagus - Berry Patch

La Puente Co-Operative Water Co. signed deed for Hwy. as shown on this map. D: 83-87, O.R. 11851-86

RANCHO LA PUENTE
 PAT. 1-43, R.F. 559
 C.S. B-579



D: 5755-52
 D: 6321-235
 Anita M. Baldwin
 D: 87-276, O.R. 11792-41
 8-13-32

O.R. 11418-121
 J. C. & Lulu B. Clewett
 Miqe: O.R. 5770-393
 City of Covina
 D: 89-203 O.R. 11988-96

TRACT NO 718
 M.B. 17-17
 C.S. B-519-2

STATION	DESCRIPTION	REMARKS
197 RT Sta. 84+36	B.M. No. 9	Cut SpK in 24" Willow 15' Above Grd.
40 RT Sta. 93+63	B.M. No. 10	1" Iron Pipe with 2" Knob Buried 12"
		Profile Grade is Crown of Pavement

F.M. 10579
 A 4 OF A 4