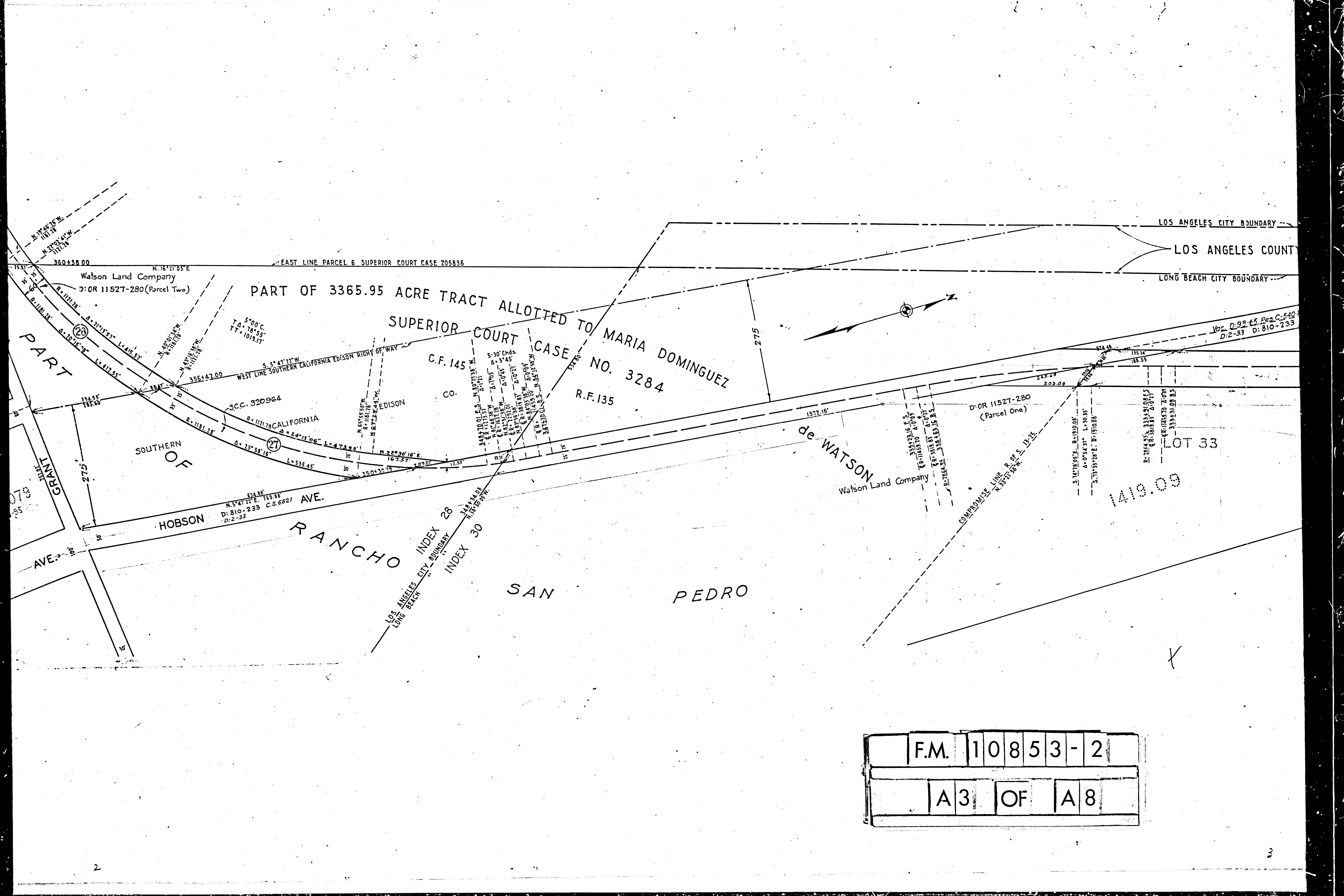




F.M.	10853-2
A1	OF A8



PART OF 3365.95 ACRE TRACT ALLOTTED TO MARIA DOMINGUEZ
 SUPERIOR COURT CASE NO. 3284

PART OF GRANT

RANCHO SAN PEDRO

HOBSON AVE.

de WATSON

LOS ANGELES CITY BOUNDARY
 LOS ANGELES COUNTY
 LONG BEACH CITY BOUNDARY

Watson Land Company
 D:OR 11527-280 (Parcel Two)

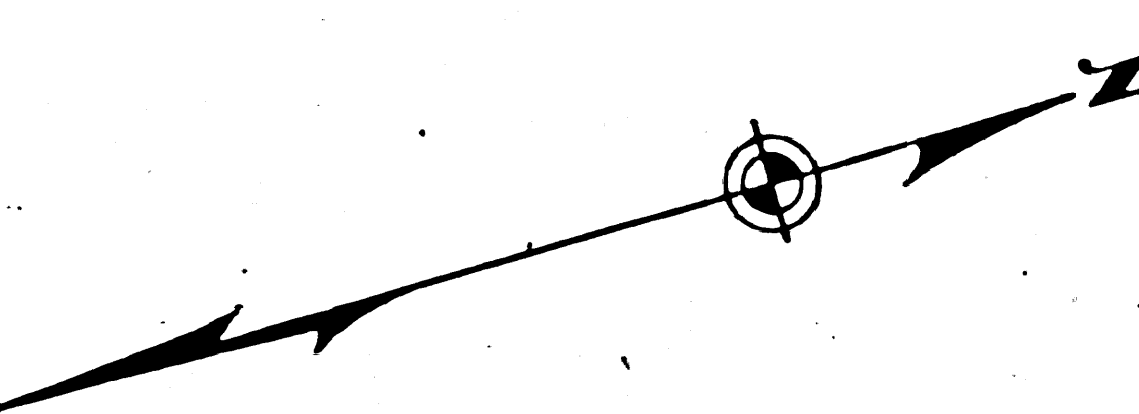
SCC. 320964

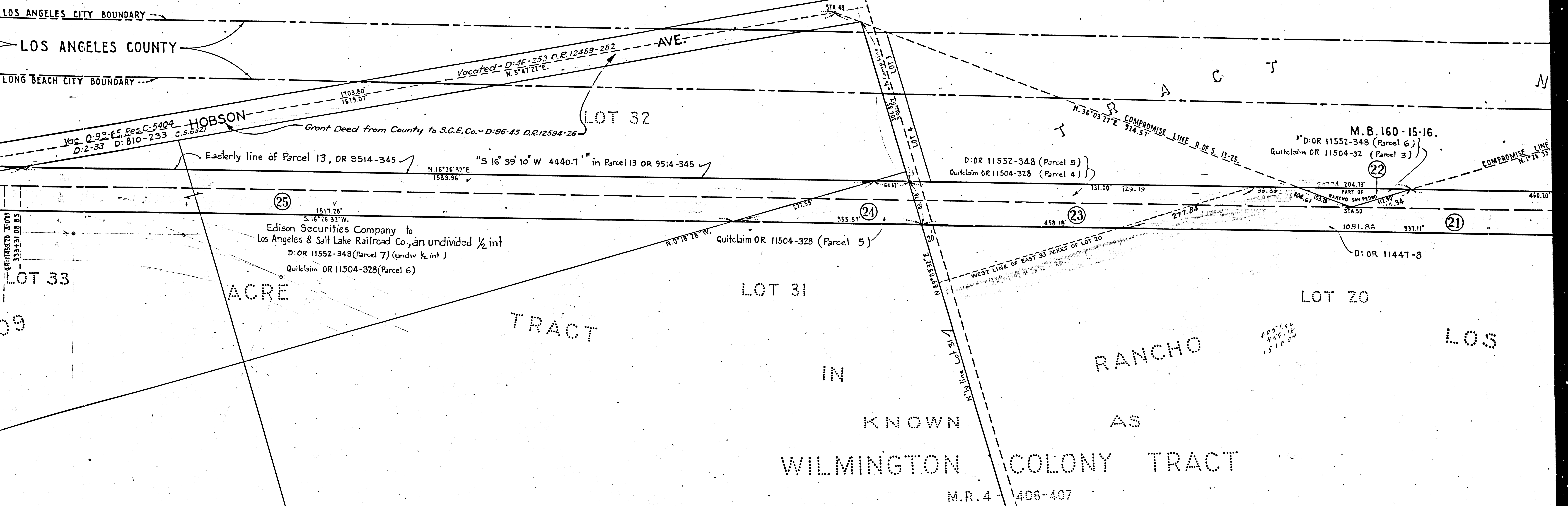
C.F. 145
 CO.
 R.F. 135

D:OR 11527-280
 (Parcel One)

LOT 33
 1410.09

F.M.	1	0	8	5	3	-	2
A	3	OF	A	8			





F.M.	1	0	8	5	3	-	2
A	4	OF	A	8			



LA SERENA BLOCK 1

M.B. 62-72, 73
D:OR 11552-348 (Par 2) Lots 8 and 31
D:OR 11402-186 Lots 9, 10, 32 and 33

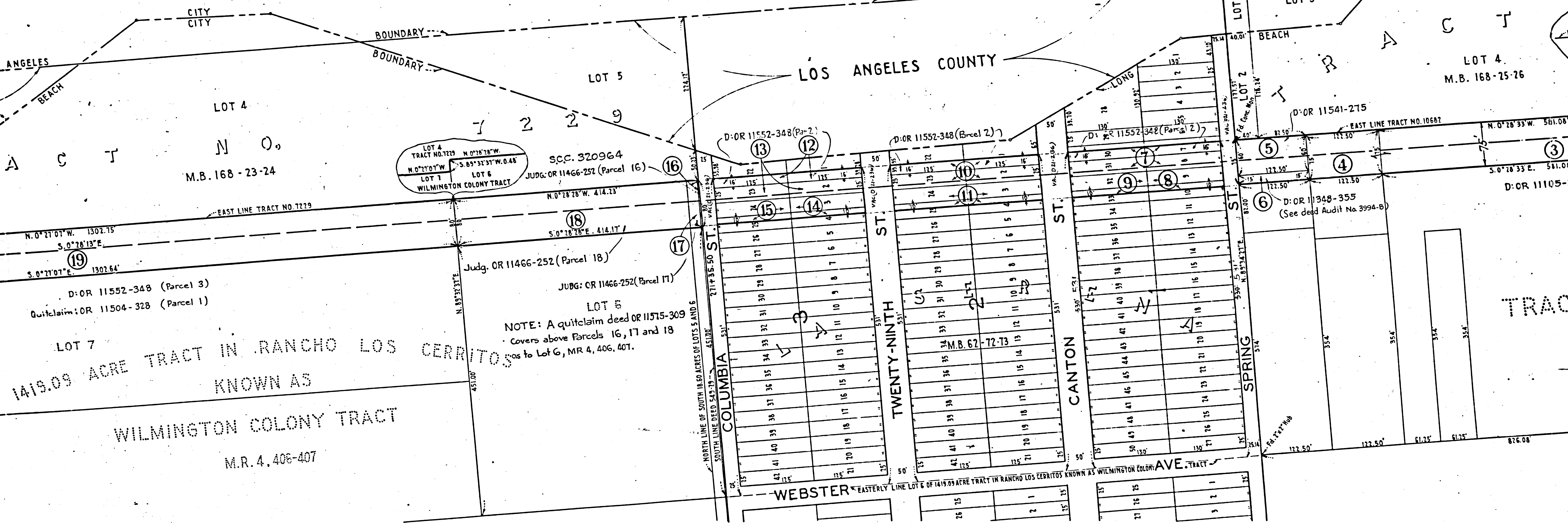
BLOCK 2

D:OR 10941-355 Lots 2 and 23
D:OR 11061-199 " 3 " 4
D:OR 11061-190 " 24 " 25

BLOCK 3

D:OR 10941-355 Lots 2 and 23
D:OR 11061-199 " 3 " 4
D:OR 11061-190 " 24 " 25

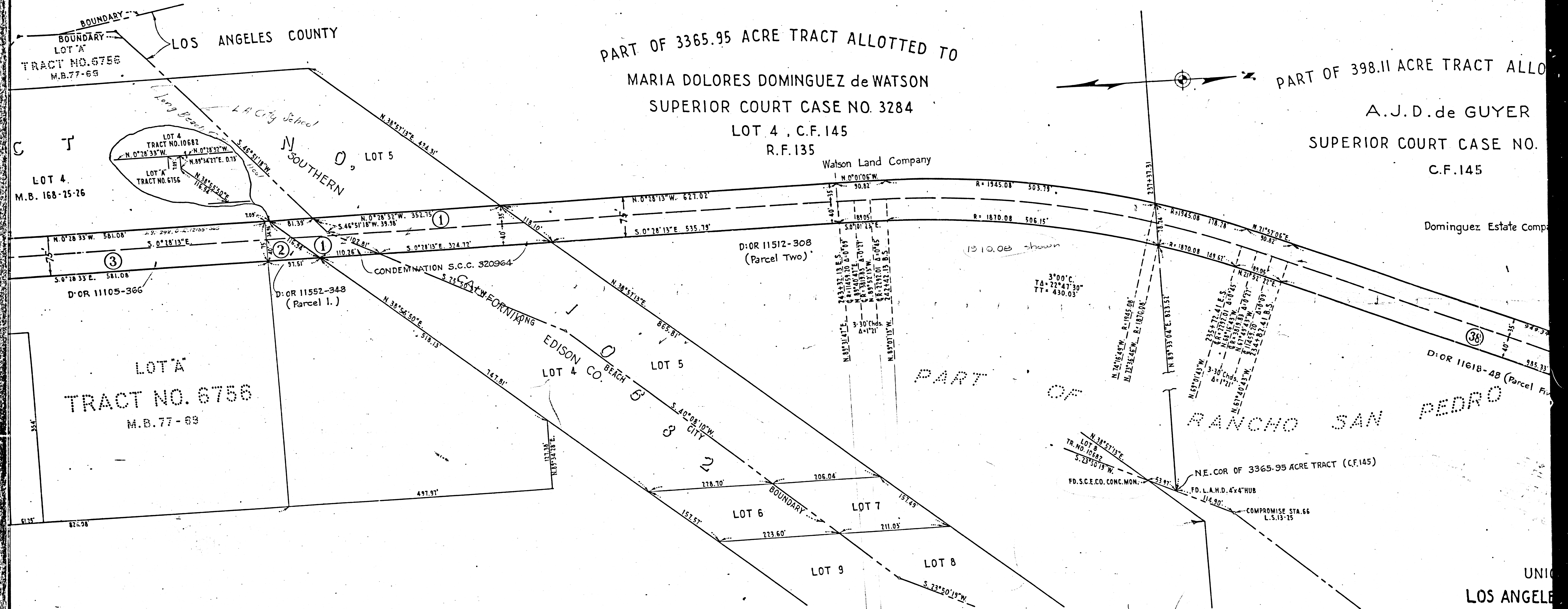
LOS ANGELES COUNTY



LOT 7
1419.09 ACRE TRACT IN RANCHO LOS CERRITOS
KNOWN AS
WILMINGTON COLONY TRACT
M.R. 4, 406-407

NOTE: A quitclaim deed OR 11575-309
Covers above Parcels 16, 17 and 18
as to Lot 6, MR 4, 406, 407.

F.M. 10853-2
A 6 OF A 8



PART OF 3365.95 ACRE TRACT ALLOTTED TO
 MARIA DOLORES DOMINGUEZ de WATSON
 SUPERIOR COURT CASE NO. 3284
 LOT 4, C.F. 145
 R.F. 135
 Watson Land Company

PART OF 398.11 ACRE TRACT ALLOTTED TO
 A.J.D. de GUYER
 SUPERIOR COURT CASE NO.
 C.F. 145
 Dominguez Estate Comp

LOT A
 TRACT NO. 6756
 M.B. 77-69

PART OF
 RANCHO SAN PEDRO

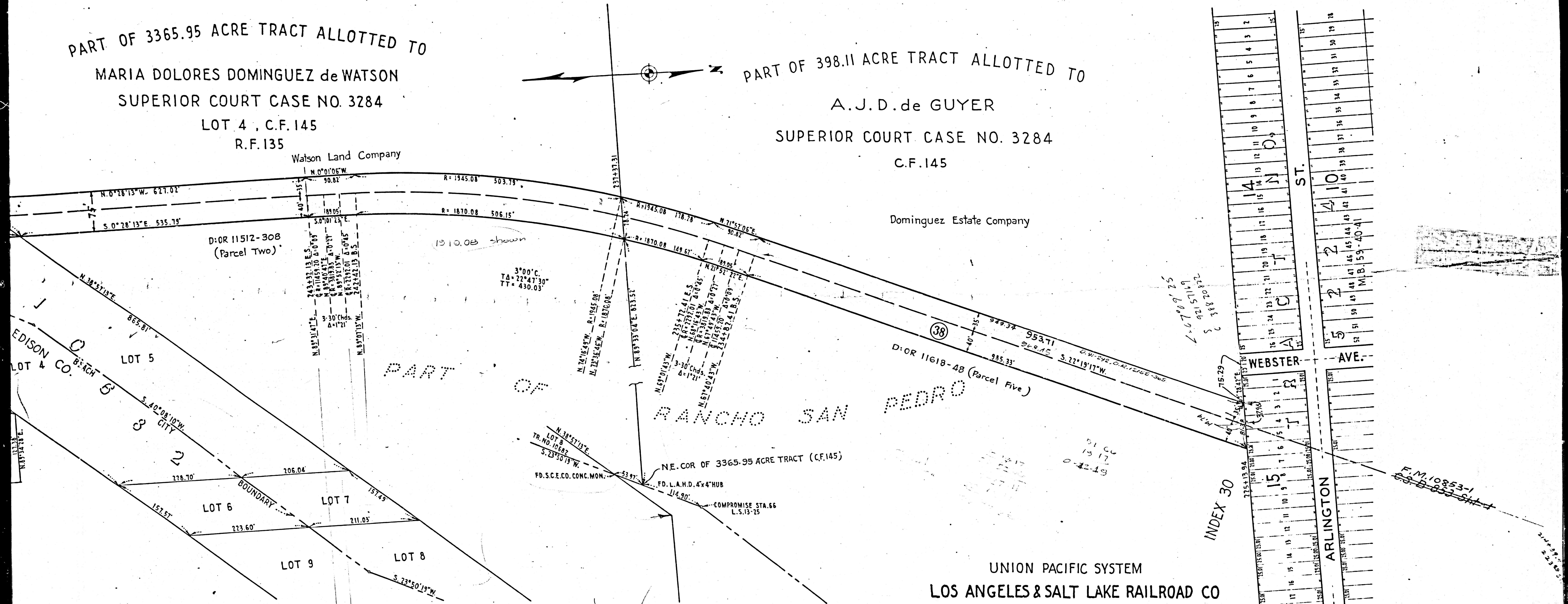
F.M. 10853-2
 A7 OF A8

INDEX 28
 INDEX 30

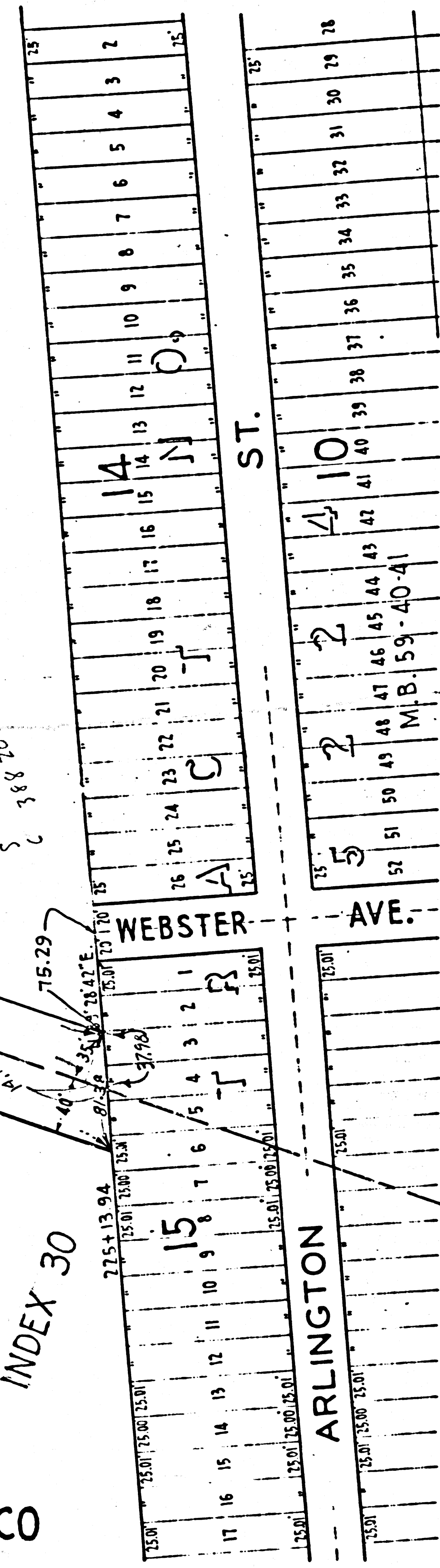
UNION
 LOS ANGELES
 LONG BEACH
 SCALE 1"=100'
 LAND ACQUIRED BY
 CONDEMNATION
 DEED REFERENCES
 PORTIONS OF STREETS

PART OF 3365.95 ACRE TRACT ALLOTTED TO
 MARIA DOLORES DOMINGUEZ de WATSON
 SUPERIOR COURT CASE NO. 3284
 LOT 4, C.F. 145
 R.F. 135

PART OF 398.11 ACRE TRACT ALLOTTED TO
 A.J.D. de GUYER
 SUPERIOR COURT CASE NO. 3284
 C.F. 145



PART OF RANCHO SAN PEDRO



UNION PACIFIC SYSTEM
 LOS ANGELES & SALT LAKE RAILROAD CO
 LONG BEACH CUT-OFF

SCALE 1"=100 FT

APR. 11, 1931.

LAND ACQUIRED BY L.A. & S.L. RR CO BY DEED OR
 CONDEMNATION. TINTED RED:
 DEED REFERENCES OR JUDG. REFERENCES GIVEN IN RED
 PORTIONS OF STREETS VACATED TINTED YELLOW.

F.M. 10853-2
 A 8 OF A 8

INDEX 28
 INDEX 30