

BLOCK - 1

THE MONICA

BLOCK-K

BOCA DE SANTA MONICA BLOCK-M.
CASE NO 2405 17TH JUDICIAL DISTRICT COURT

OCEAN AVE.

SANTA MONICA LAND AND WATER CO. TRACT
M.R. BK. 78 Pg. 44 Et. seq.
PORTION OF BLOCK 48

CITY OF SANTA MONICA (FOR PARK PURPOSES)
D. 3416-153.

PORTION OF ALLOTMENT NO. 1 TO R.S. BAKER ET AL
OF RANCHO BOCA DE SANTA MONICA.

Parcel No. 6 - 3301 Act

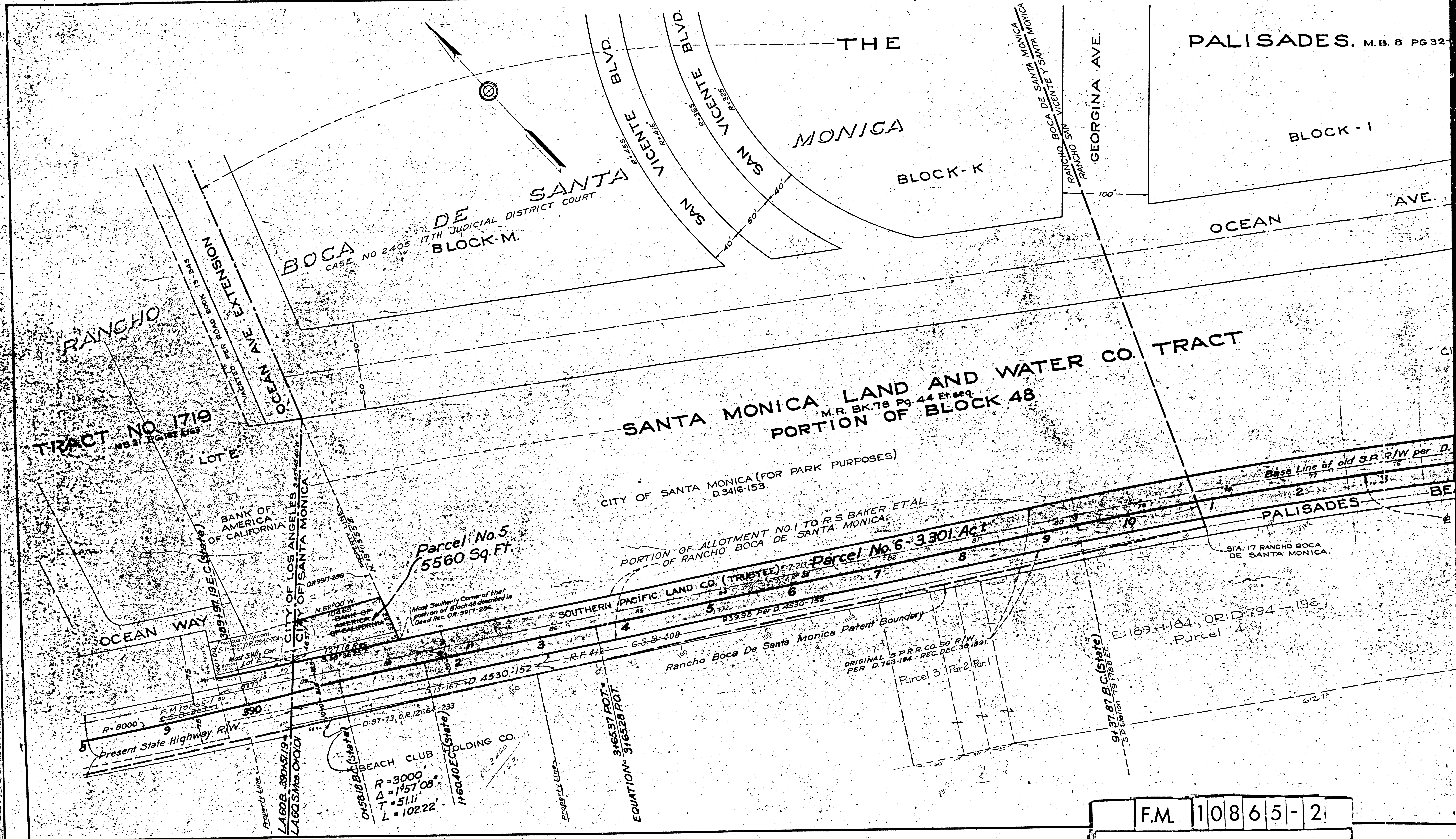
Parcel No. 5
5560 Sq. Ft.

Rancho Boca De Santa Monica Patent Boundary
ORIGINAL S.P.R.R. CO. 50' R/W
PER D. 763-184 REC. DEC. 30, 1891

BEACH CLUB
R = 3000'
Δ = 1957'08"
T = 51.11'
L = 102.22'

EQUATION = 3165.97 ROT = 3165.28 RAT

F.M. 10865-2
A1 OF A3



DES. M.B. 8 PG 32

BLOCK - 1

MARGUERITA AVE.

BLOCK-G

ALTA AVE.

CITY OF PALISADES BLOCK-C

PALISADES AVE.

M.B. 7-154.

OF PALISADES BLOCK-A

AVE.

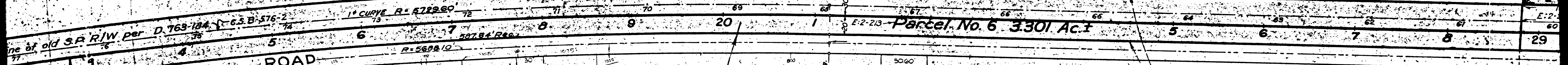
SANTA MONICA LAND AND WATER CO. TRACT PORTION OF BLOCK 48

M.R. BK. 76. PG. 44 Et. seq.

CITY OF SANTA MONICA (FOR PARK PURPOSES)
D. 3416-153

CITY OF SANTA MONICA (FOR PARK PURPOSES)
D. 3416-155.

PAT. 3-PCS-3091 SANTA MONICA



SADES

BEACH ROAD
Proposed State Highway

RANCHO

SAN

VICENTE

ORIGINAL S.P.R.R. CO. 50' R/W
PER D. 763-184. REC. DEC. 30, 1891

R=5718.10
Δ=11°47'10"
T=59021
L=1176.25

Mean High Tide Line

Superior Court Case No. 371986
Suit for Condemnation
Filed Apr. 6, 1934
People of the State of Cal, Plfff.
Vs
City of Los Angeles, et al., Def.

Note:- Suit covers parcels 1 to 4
on C.S. B-865 Sht. 1 and parcels
5 to 13 on this map.

Order authorizing Plaintiff to take
immediate possession of all parcels,
rendered Apr. 6, 1934.

Final Judgment in favor of Plfff as to parcels
1, 3 & 6 to 13 incl., rendered Dec. 13, 1934.

E-2-213, O.D. 13153-183
Case dismissed as to parcels 4 and 5 on
May 8, 1935.

Final Judgment in favor of Plfff as
to parcel 2, rendered Jan. 13, 1938.

E:21-154, O.R. 15500-280

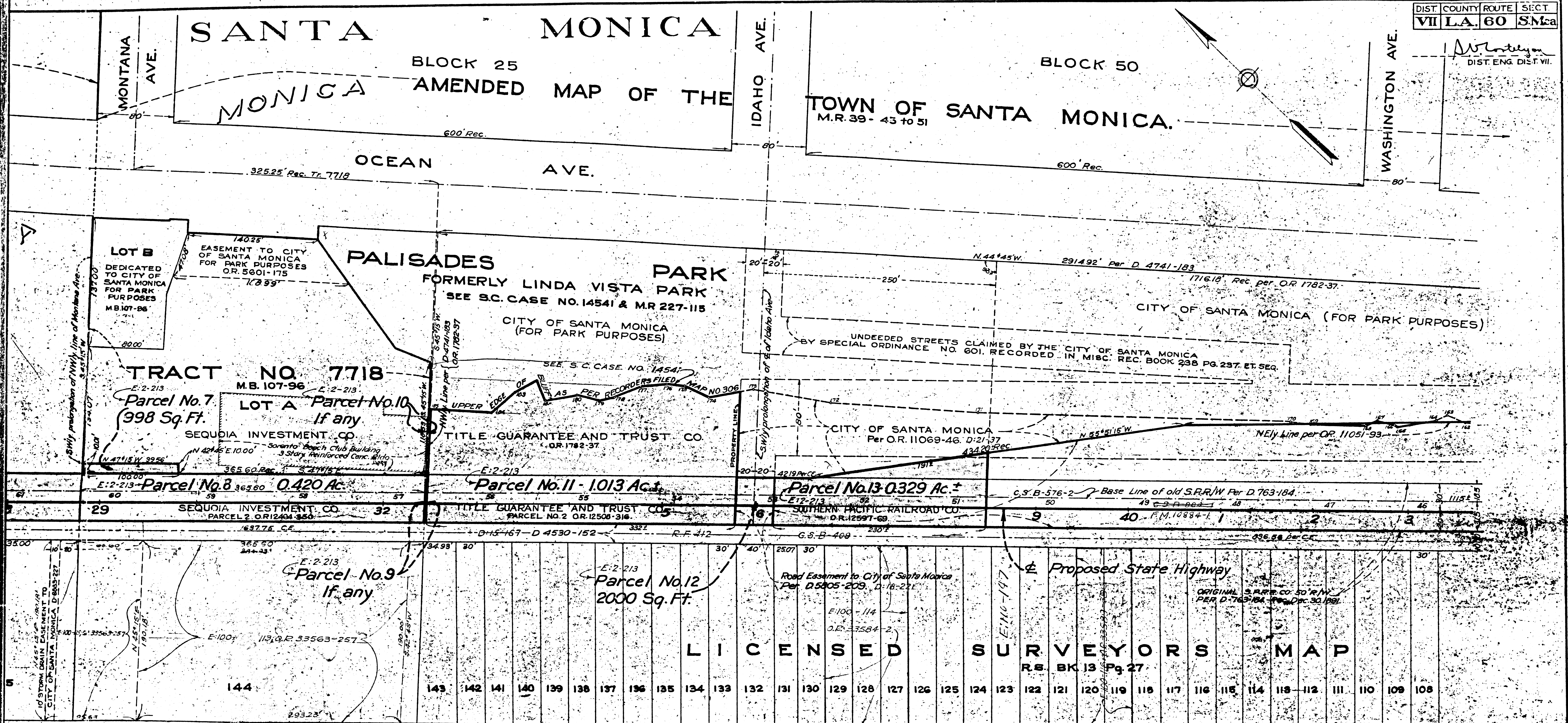
S.P.R.R. 67 + 992 B.C. 174 Rec. Sht.
2174.12 E.C. (State)

Line of Mean High Tide.

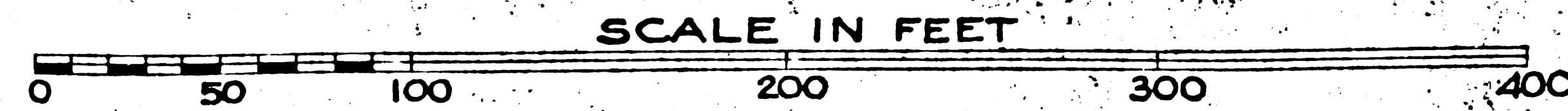
145

F.M. 10865-2

A2 OF A3



MAP FOR RESOLUTION NO. 3.



MAP OF PROPOSED
**STATE HIGHWAY
 RIGHT OF WAY**
 IN THE
CITY OF SANTA MONICA
 FROM
WESTERLY CITY LIMITS
 TO
CALIFORNIA AVENUE INCLINE
 JANUARY 1934.

INDEX 21 & 58

F.M.	10865-2
A3	OF A3