

F.M. 10883  
 A 1 OF A 2

Drawn from Surveys and official Records  
 in the office of C.E. SUMNER, Licensed Surveyor  
 634-635 N. W. Neilman Building, Los Angeles.  
 Sept. 1924 Scale 1" = 100'

NOTE:- Data shown in brown on Canyon Crest  
 Road taken from road deed descriptions.  
 Co. Sur. 7-16-1934

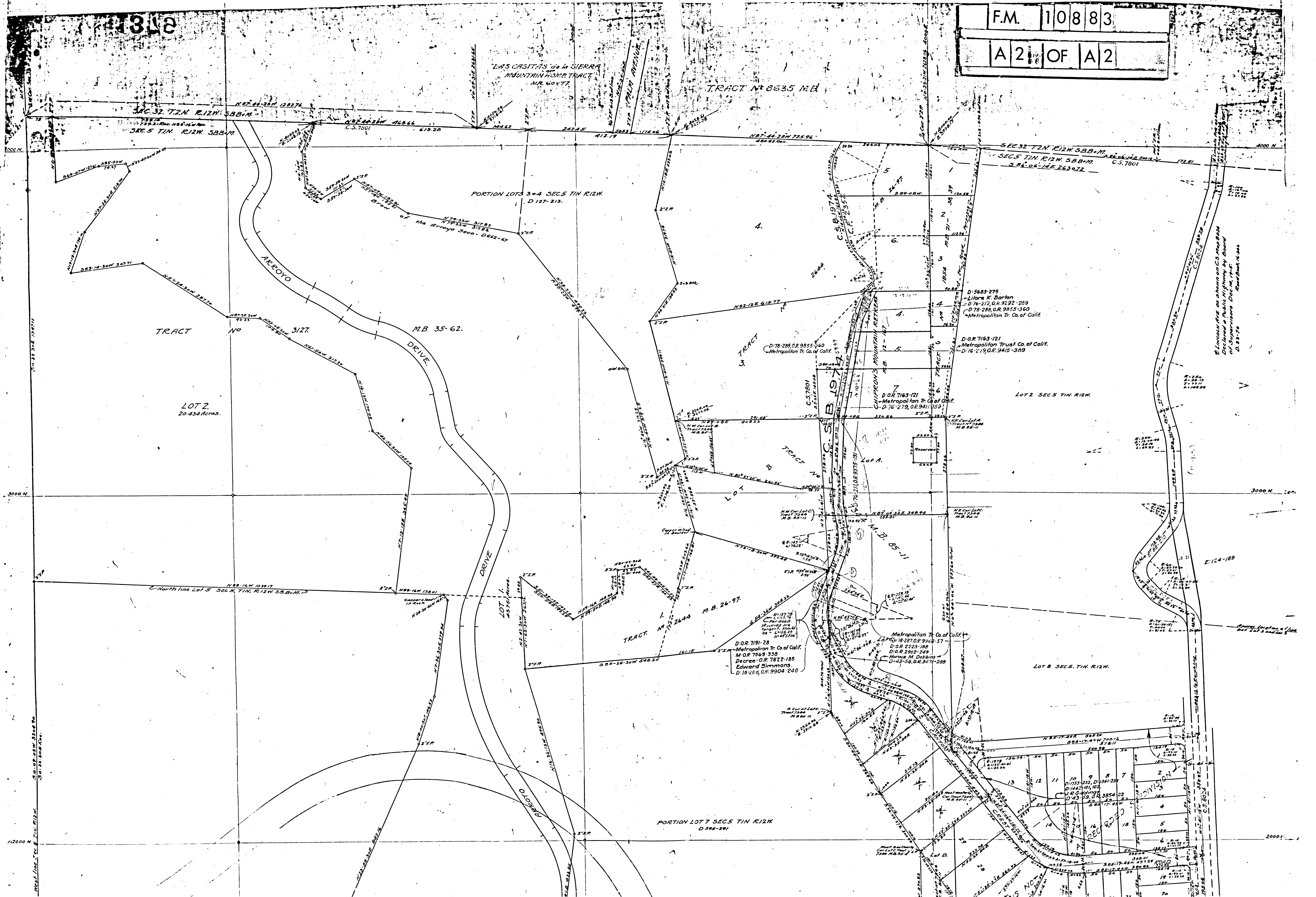
INDEX 88

NEG. 150

18781

18781





LAS CASITAS de la SIERRA  
MOUNTAIN HOME TRACT  
M.B. 60-77

TRACT NR 8635 M.B.

PORTION LOTS 3+4 SECS 5 T1N R12W  
D 127-213

TRACT NR 3127  
M.B. 35-62

LOT 2  
20.434 Acres

TRACT NR 3

TRACT NR 3

TRACT NR 3

TRACT NR 2644  
M.B. 26-97

TRACT NR 2444  
M.B. 26-97

TRACT NR 3127  
M.B. 35-62

TRACT NR 3127  
M.B. 35-62

PORTION LOT 7 SECS 5 T1N R12W  
D 595-291

REC 8530

10	9	8	7
11	10	9	8
12	11	10	9
13	12	11	10
14	13	12	11
15	14	13	12
16	15	14	13
17	16	15	14
18	17	16	15
19	18	17	16
20	19	18	17
21	20	19	18
22	21	20	19
23	22	21	20
24	23	22	21
25	24	23	22