

AMENDED MAP OF THE TOWN OF SANTA MONICA
 M. R. 39-45 ET. SEQ.

PARCEL NO. 11-2.778 AC.
 Pacific Southern
 (Leased to Pacific Electric Railway Co.)

Superior Court Case No. 378110
 Suit for Condemnation
 Filed Sept. 12, 1934
 People of the State of Cal., Plff.
 Vs
 Title Guarantee & Trust Co., Def.
 Note: Suit covers parcel 11 on
 this map and parcels 1 to 10 on
 C.S. Case No. 131082
 Final judgment in favor of Plff. as to parcels
 1, 2 & 4 to 11 incl., rendered Dec. 13, 1934.
 E-2-217, O.R. 13179-100

Parcel 3 is owned by City of Santa Monica
 and Plaintiff herein does not seek to
 condemn the interest of said City

**SCOTT'S ADDITION
 TO
 SANTA MONICA**
 M.R. 7-58 859

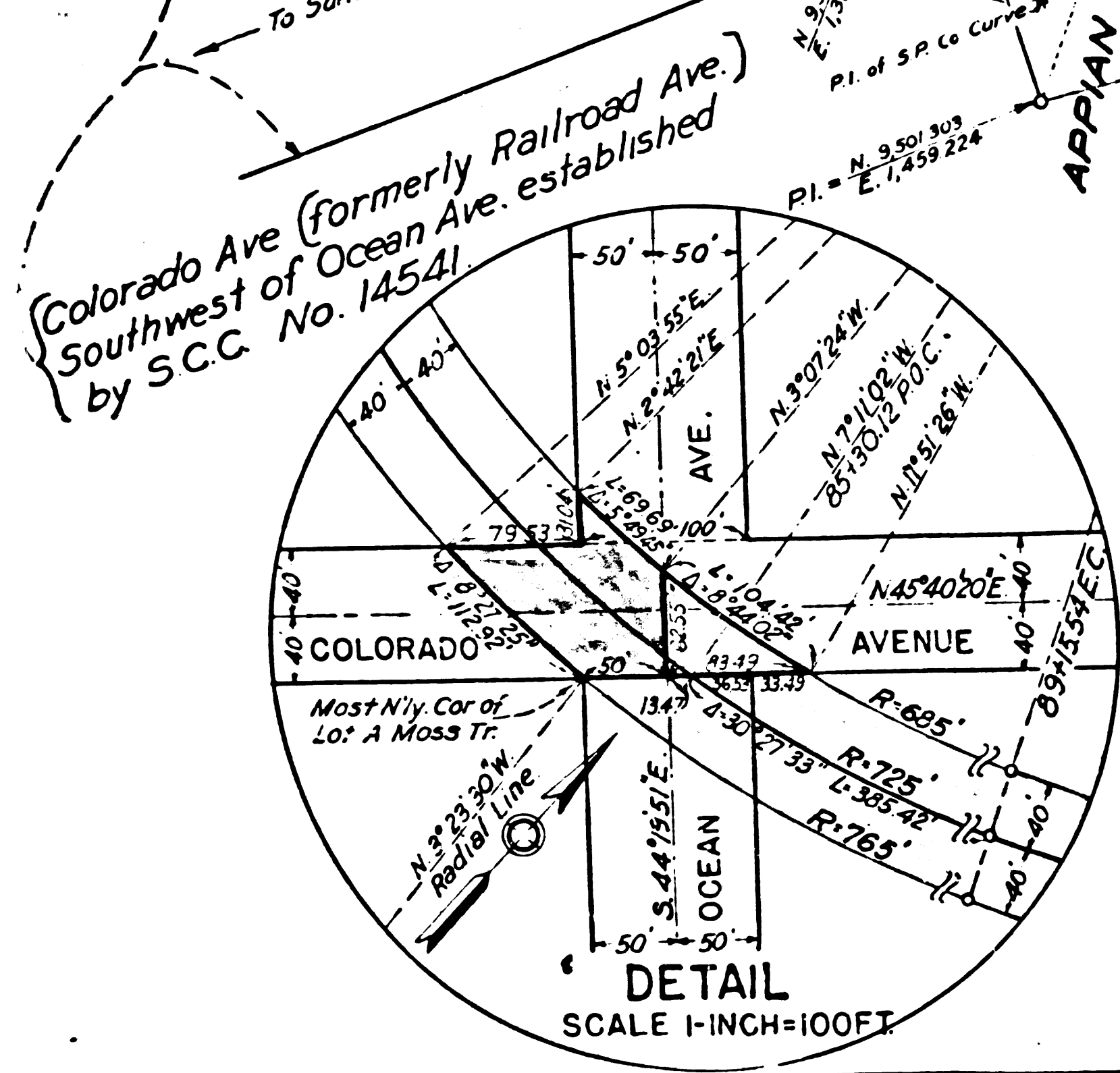


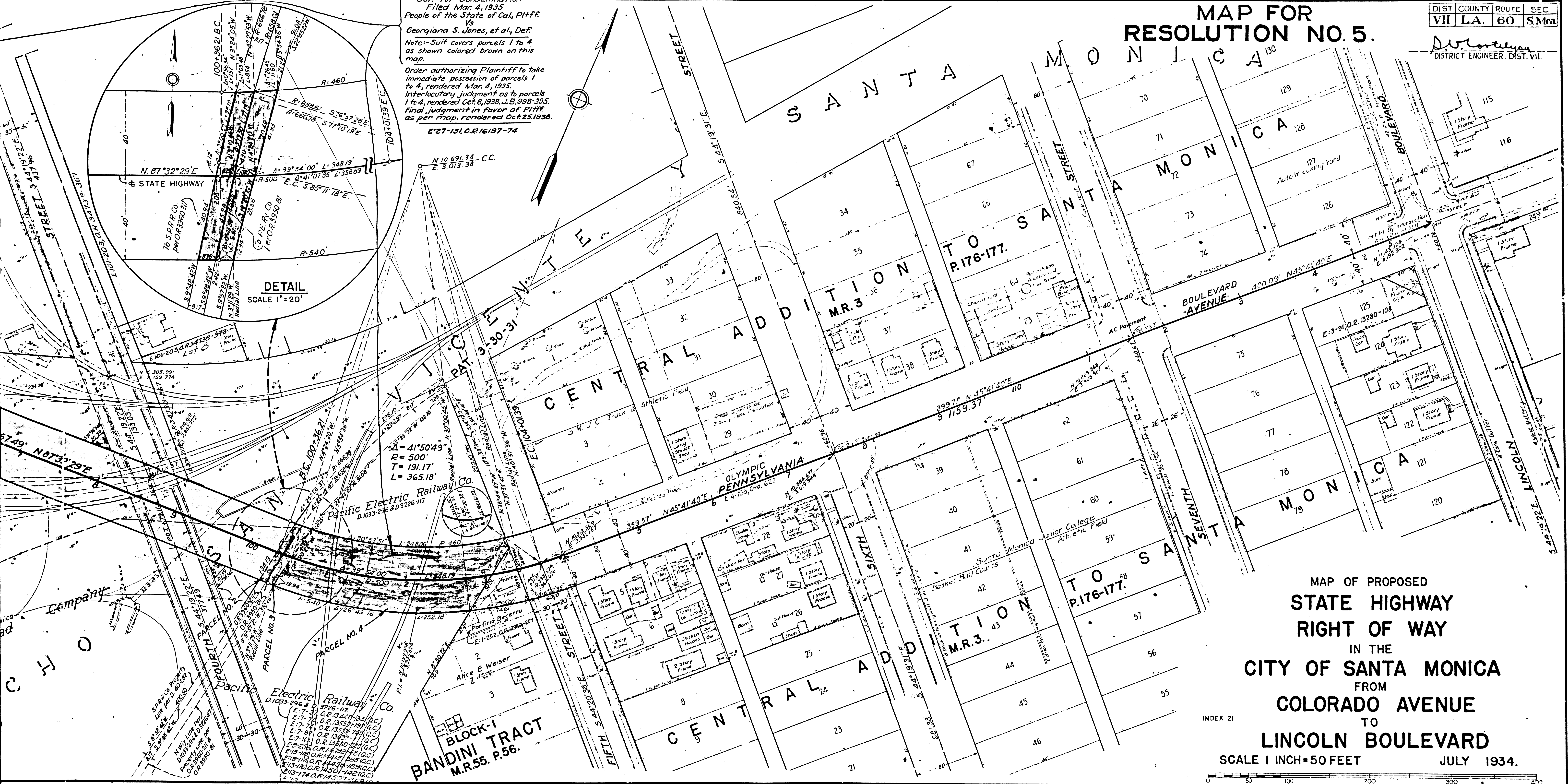
EXHIBIT "B"

MAP FOR RESOLUTION NO. 5.

DIST	COUNTY	ROUTE	SEC
VII	LA.	60	S.Mea

D. J. Lovelace
DISTRICT ENGINEER, DIST. VII.

Superior Court Case No. 384478
 Suit for Condemnation
 Filed Mar. 4, 1935
 People of the State of Cal., Plffs.
 Vs.
 Georgiana S. Jones, et al, Defs.
 Note: Suit covers parcels 1 to 4,
 as shown colored brown on this
 map.
 Order authorizing Plaintiff to take
 immediate possession of parcels 1
 to 4, rendered Mar. 4, 1935.
 Interlocutory judgment as to parcels
 1 to 4, rendered Oct. 6, 1935, J.B. 898-395.
 Final judgment in favor of Plffs.
 as per map, rendered Oct. 25, 1935.
 E 27-131, O.R. 16197-74



MAP OF PROPOSED
 STATE HIGHWAY
 RIGHT OF WAY
 IN THE
 CITY OF SANTA MONICA
 FROM
 COLORADO AVENUE
 TO
 LINCOLN BOULEVARD
 SCALE 1 INCH = 50 FEET
 JULY 1934.

F.M. 10884-2
 A 2 OF A 2