

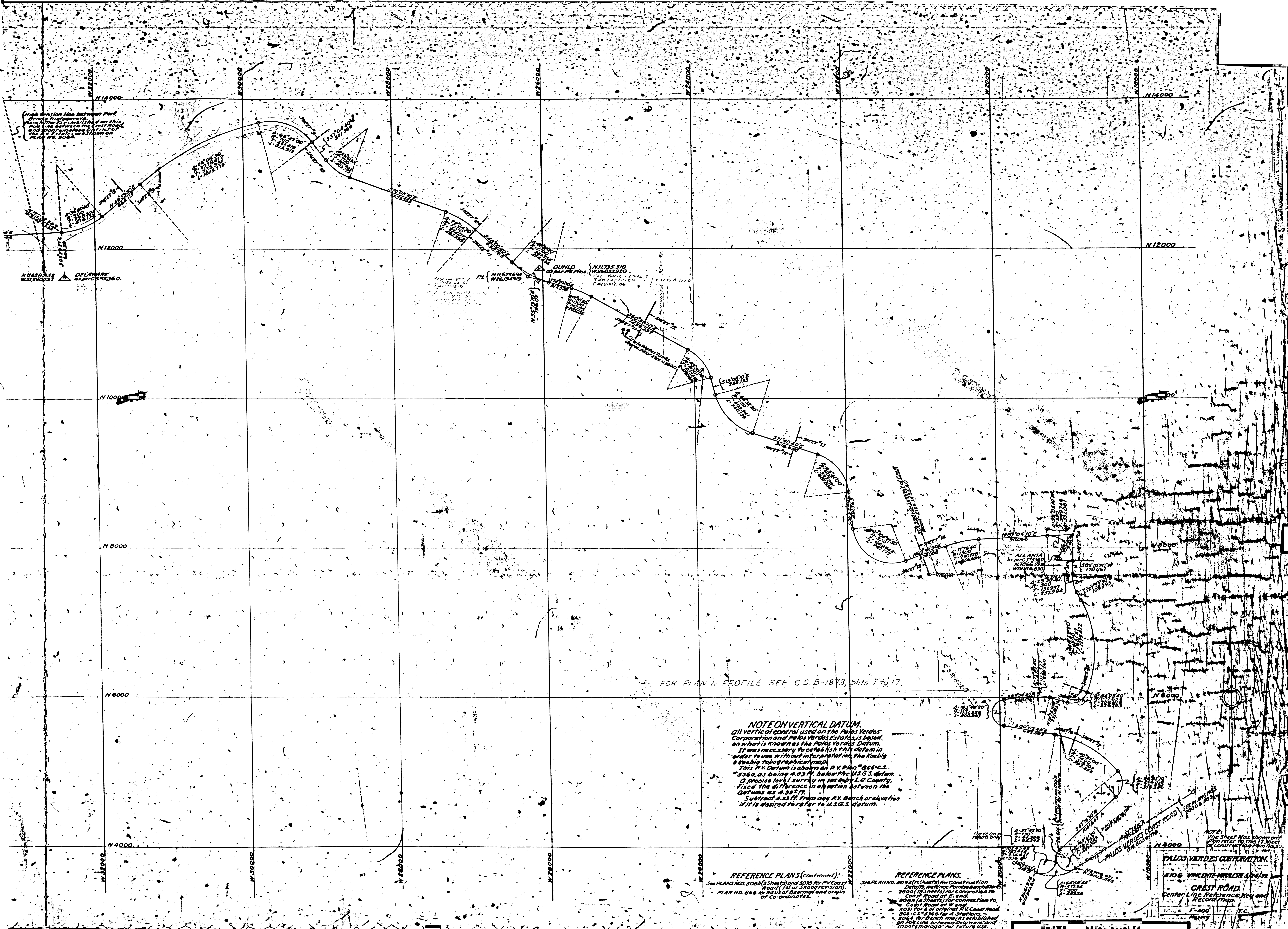
High tension line between Part 1 and 2. This line is shown on this map. The line between the East Tower and West Tower is shown on this map. The line between the East Tower and West Tower is shown on this map.

LOUISIANA at Paris 5360
C.S. B 1022-2

DELAWARE at Paris 5360
C.S. B 1022-2

1:50,000

AV OF AV



FOR PLAN & PROFILE SEE C.S. B-1873, Shts 1 to 17.

NOTE ON VERTICAL DATUM.
 All vertical control used on the Palms Verdes Corporation and Palms Verdes Estates is based on what is known as the Palms Verdes Datum. It was necessary to establish this datum in order to use without interruption the existing 4.00 ft. bench mark (BM) 1175.510. This R.V. Datum is shown on R.V. Plan 866-C.S. 5360, as being 4.03 ft. below the U.S.G.S. datum. A precise level survey in 1924 by L.G. Country, filed the difference in elevation between the datums as 4.33 ft. Subtract 4.33 ft. from any R.V. bench or elevation if it is desired to refer to U.S.G.S. datum.

REFERENCE PLANS (continued):
 See PLANS NO. 5003 (3 Sheets) and 5010 for R.V. Coast Road (L.G. or 5100 ft. 10/10/10).
 PLAN NO. 866 for 8013 of bearing and origin of co-ordinates.

REFERENCE PLANS.
 See PLAN NO. 5004 (13 Sheets) for Construction Datum, from the above description 3600 (13 Sheets) for connection to Coast Road at 1.60 ft.
 408 (4 Sheets) for connection to Coast Road at 1.60 ft.
 5031 for 8 of original R.V. Coast Road 066-C.S. 5360 at 4.33 ft.
 5064 for Bench mark established on job line between Palms Verdes and 5004-C.S. 5360 for 1000 ft. 10/10/10.

NOTE:
 The Sheet Nos. shown on this plan are for the sheets of construction plans only.
PALMS VERDES CORPORATION.
 5106 VINCENTE BOULEVARD S.W.
CREST ROAD
 Center Line Reference Key and Record Map.
 SCALE 1"=400'
 DATE 1924

110-81876

A 2 OF A 2