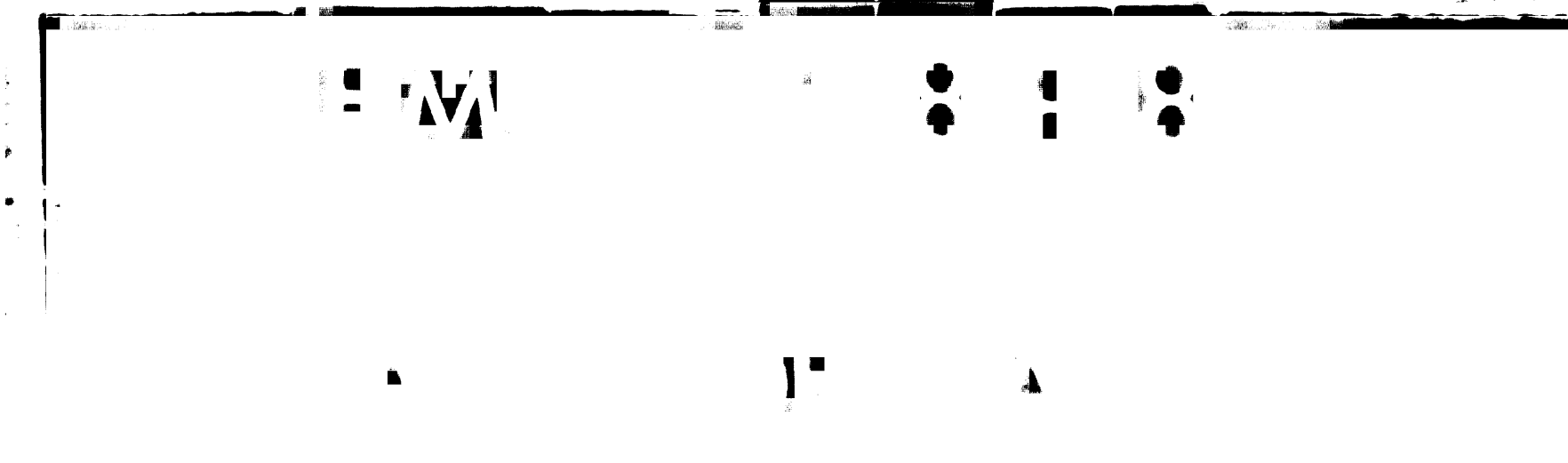


# MAP

SHOWING SURVEY OF A PART OF  
SECTION 32 T.2N. R.13W. ALSO A PART  
OF SECTIONS 5, 7, AND 8, T.1N. R.13W.  
AS SHOWN ON MRP OF V. BEAUDRY  
MOUNTAINS AS PER M.R. 36-67  
SURVEYED BY H. REEDY OCT. NOV. 1925 SCALE: 1" = 500'

FOR RECOVERY SEE C.S. B-725, SH. 13.

INDEX 30  
INDEX 31



**MAP**

SHOWING SURVEY OF A PART OF SECTION 32 T.2N. R.13W. ALSO A PART OF SECTIONS 5, 7, AND 8, T.1N. R.13W AS SHOWN ON MAP OF V. BERUDEY MOUNTAINS AS PER M.R. 96-67 SURVEYED BY K. REEDY OCT. NOV. 1925 SCALE: 1" = 300'

FOR RESURVEY SEE: C.S. B-725, SH. 13.

INDEX 40  
INDEX 51

F.M. 10864  
C.S. B-889

20° 38' 15" E  
2906.70

SEC 6  
SEC 51

SEC 5  
SEC 32

T.2N. R.13W  
T.1N. R.13W

M.K. Con Secs  
Township line as established by  
Plat of shown on C.S. 8850  
M.R. 96-67

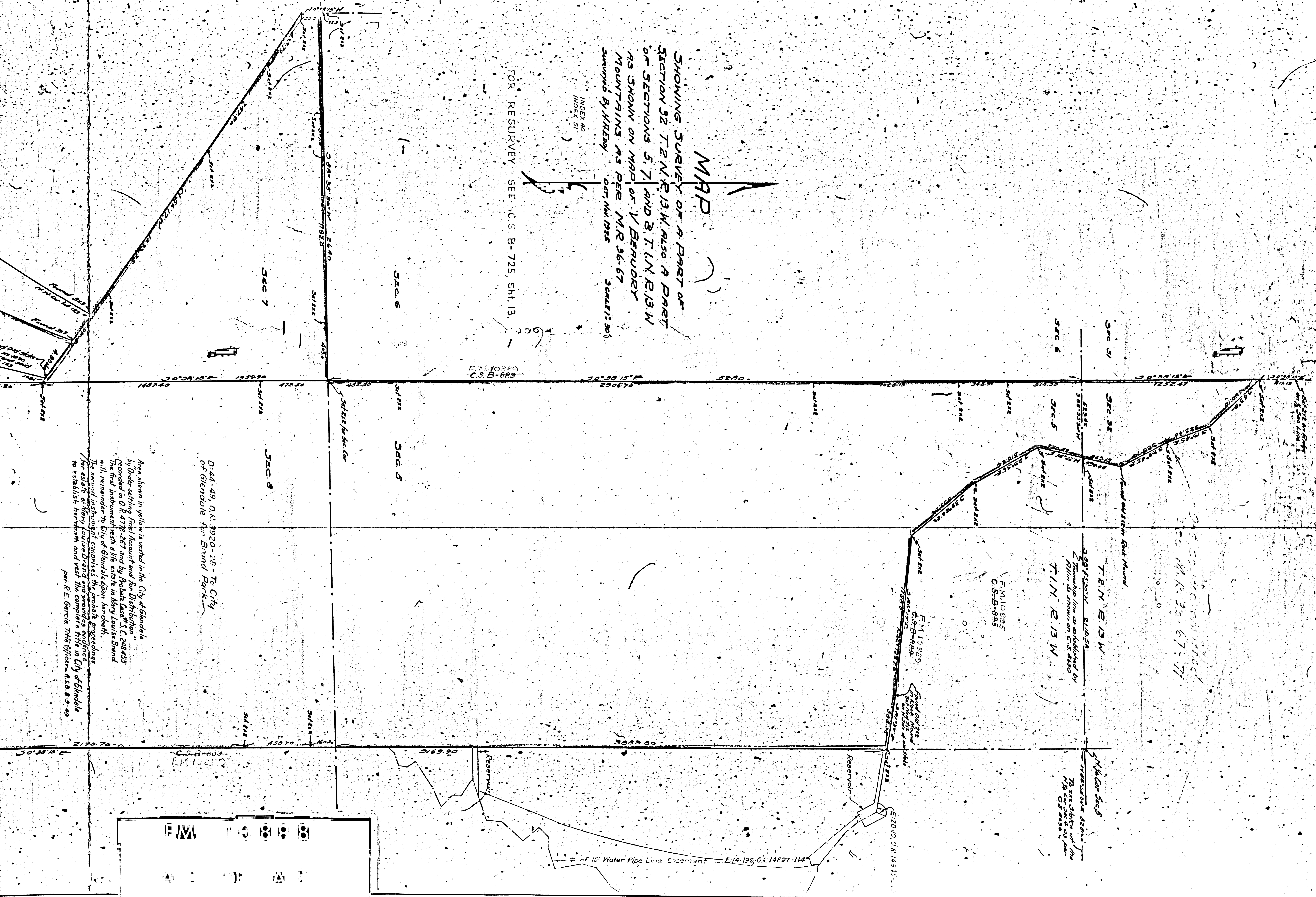
F.M. 10825  
C.S. B-885

F.M. 10829  
C.S. B-889

F.M. 10828  
C.S. B-888

E. 20-10, O.R. 14345

15" Water Pipe Line Easement - E. 14-136, O.R. 14697-114



D:44-49, O.R. 3920-28 - To City of Glendale for Grand Park.

Area shown in yellow is vested in the City of Glendale by Order setting Final Account and for Distribution recorded in O.R. 4778-267 and by Robate Case S.C. 298455. The first instrument vests a life estate in Mary Louise Brand with remainder to City of Glendale upon her death. The second instrument comprises the probate proceedings for estate of Mary Louise Brand and provides title in City of Glendale to establish her death and vest the complete title in City of Glendale per R.E. Garcia, Title Officer - A.S. 8-9-49.

FM	10825	10829	10828
▲	▲	▲	▲