

M

OF A PORTION OF SECTION

showing the center of said section  
from said center, the San Dimas  
the East and West 1/4 section line to  
section line, and the location of all

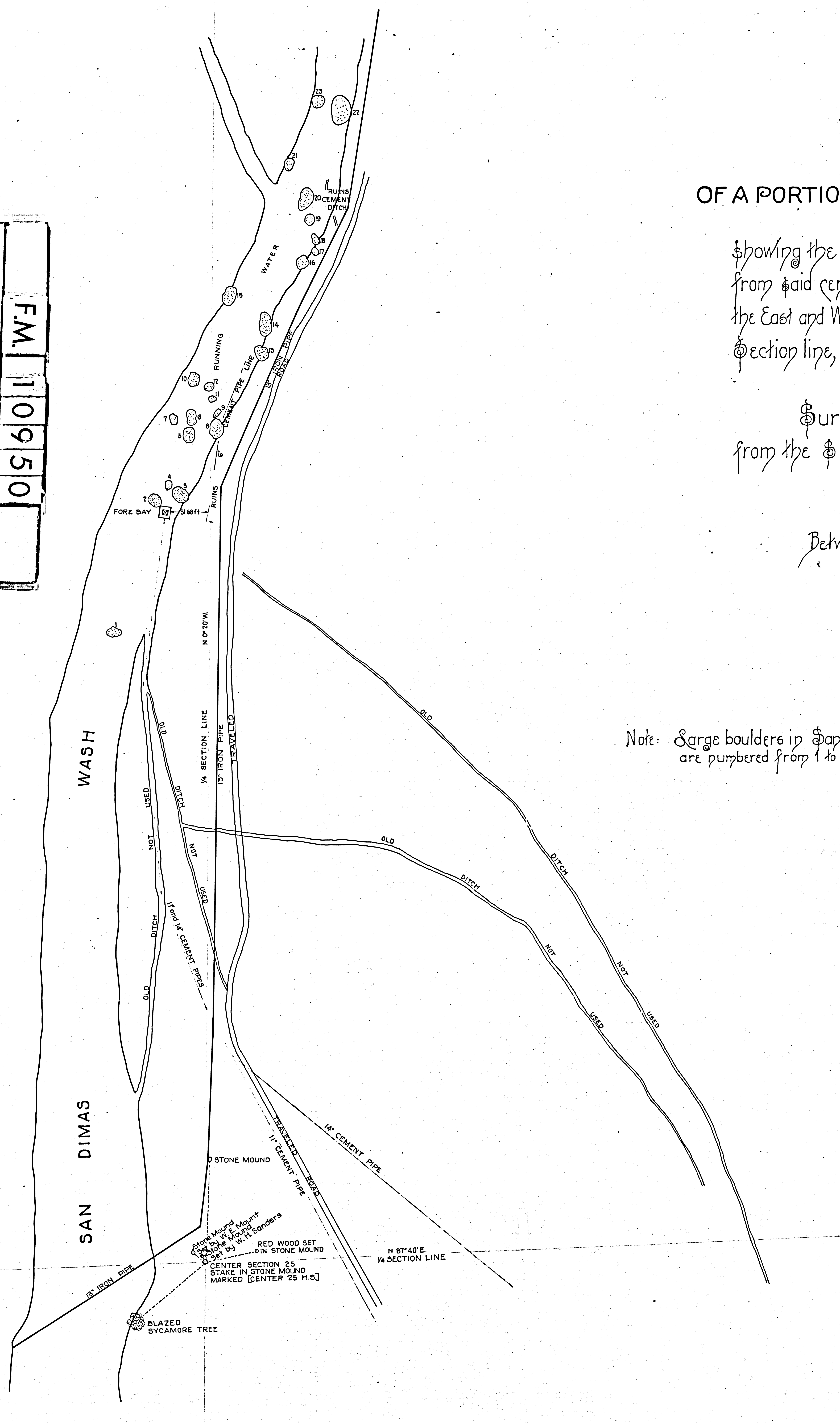
Surveyed pursuant to  
from the Superior Court of the

Between July 27 and August

Scale

Note: Large boulders in San Dimas Wash  
are numbered from 1 to 23

F.M. 10950  
A 11 OF A 2



# MAP

## OF A PORTION OF SECTION 25. T.1N. R. 9W. S.B.M.

Showing the center of said section, the 1/4 section lines running from said center, the San Dimas Creek from its intersection with the East and West 1/4 section line to a point 1000 feet North of said 1/4 section line, and the location of all evidences of water works.

Surveyed pursuant to an order and under instructions from the Superior Court of the County of Los Angeles, Cal. by HARRY F. STAFFORD County Surveyor.

Between July 27 and Aug. 8, 1891.

Scale 50 Ft. = 1 Inch.

Mag. Variation 14° 30' E.

Traced from Defendant's Exhibit "H" of S.C.C. No. 28463 by R.F. Steen, 10-17-1933. Checked by H.D. Houston.

Note: Large boulders in San Dimas Wash are numbered from 1 to 23.

78463  
 San Dimas L & W Co  
 vs  
 San Jose L & W Co

DEFENDANT'S EXHIBIT  
 H Filed  
 MAY 19, 1898  
 T. E. NEWELL, Clerk  
 By J. H. Miller DEPUTY

10066 San Jose Land & Water Co.  
 vs  
 San Jose Ranch Co.  
 11058 San Jose Ranch Co et al  
 vs  
 San Jose Land & Water Co.

Map  
 FILED  
 MAR 25, 1892  
 T. H. NABER, Clerk  
 By W. L. Deputy

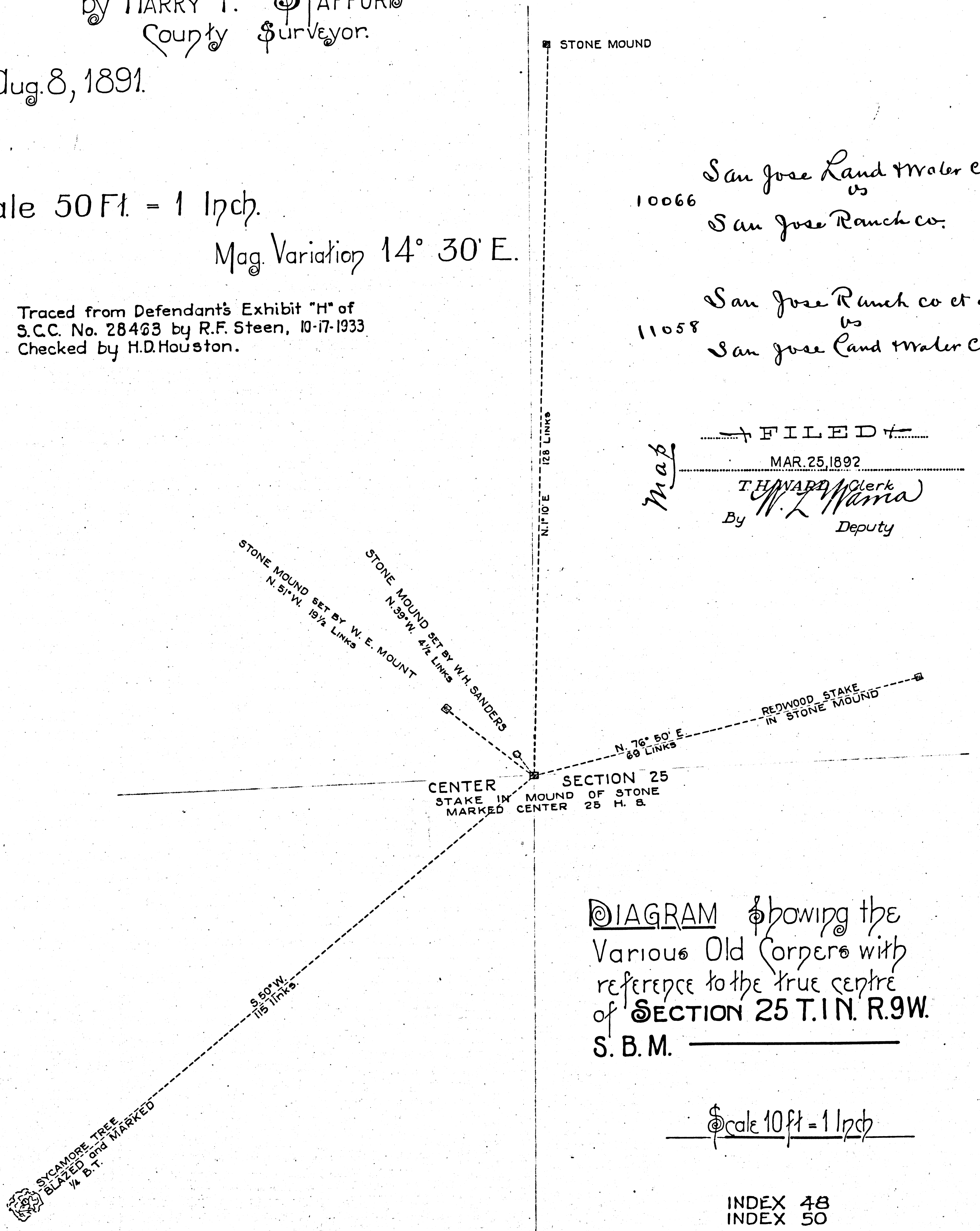


DIAGRAM showing the Various Old Corners with reference to the true centre of SECTION 25 T.1N. R.9W. S. B. M.

Scale 10 ft = 1 Inch

INDEX 48  
 INDEX 50

A	F.M.
2	1
3	0
5	9
0	5
A	0
2	1