

FORM 3

State of California  
County of Los Angeles ss

E.C. Eaton, being duly sworn, says he is the Chief Engineer of the Los Angeles County Flood Control District, that the survey of said District's reservoir described as follows:  
An area of 116.1 acres, located in Section 1, Township 2 North, Range 13 West, and Townships 2 and 3 North, Range 12 West, and Township 3 North, Range 13 West of Unsurveyed Lands, San Bernardino Meridian, Los Angeles County, California;  
Beginning at Sta. 0, a point bearing S 0° 02' 55" E, and distant 450 feet from the North East corner of Section 1, T. 2 N., R. 13 W., S. B. M.;  
Thence following the high water line of said reservoir, around the same to Sta. 77;  
Thence, crossing the canyon on a level line, N 15° 02' W, a distance of 644 feet to Sta. 72;  
Thence N 77° E, a distance of 723.31 feet to Sta. 0, the point of beginning,  
was made under his direction as Chief Engineer of the District, and under its authority, commenced on the 28th day of January, 1929, and ending on the 28th day of April, 1929, and that the survey of said reservoir accurately represents a level line, which is the proposed water line of the said reservoir, and that such survey is accurately represented upon this map and by the accompanying field notes. And no lake or lake bed, stream or stream bed is used for the said reservoir except as shown on this map.

*E.C. Eaton*  
Chief Engineer

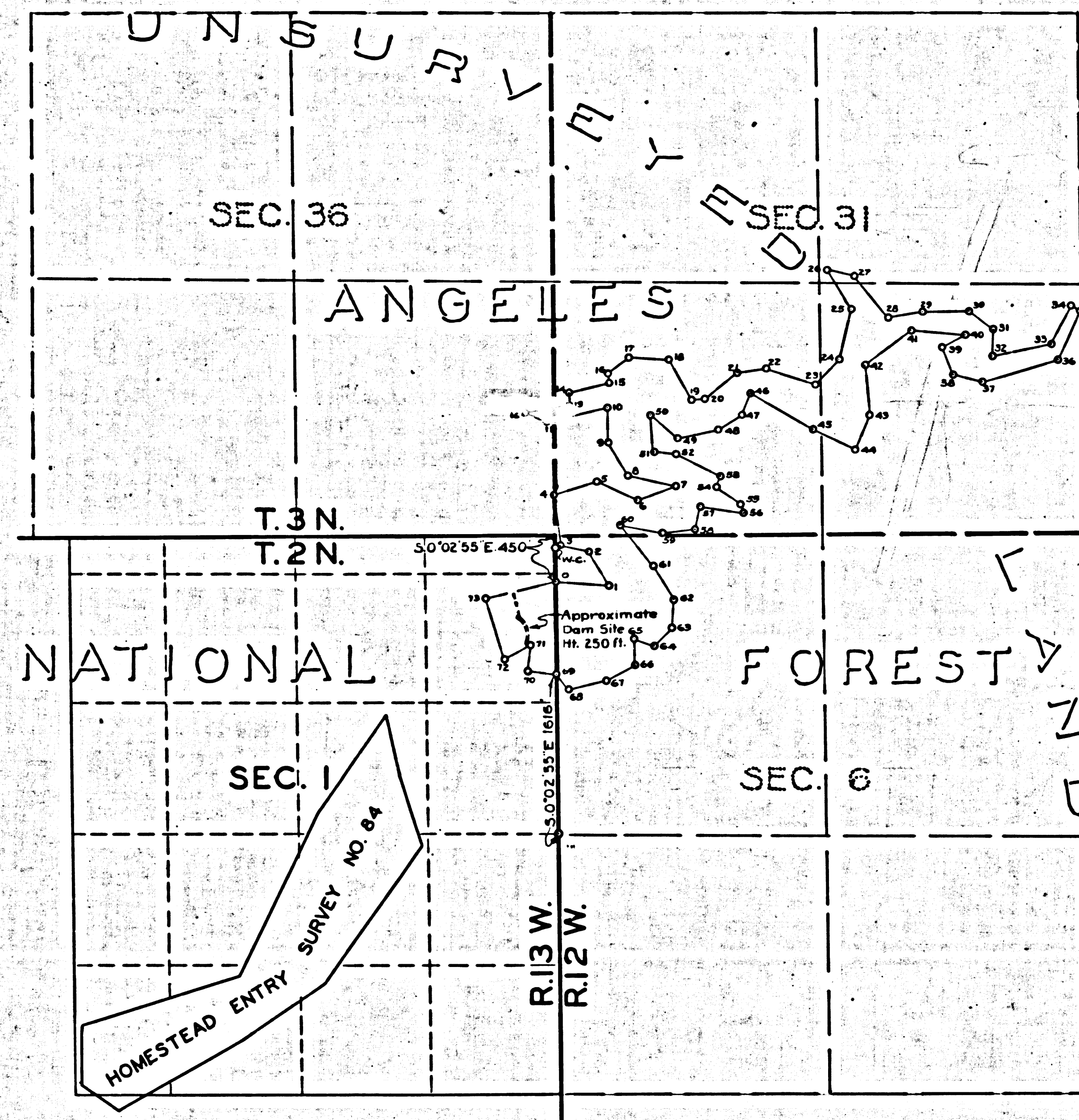
Sworn and subscribed to before me this 17th day of April, 1929.  
L.E. Langston, County Clerk.  
By *Langston* Deputy Clerk.

FORM 4

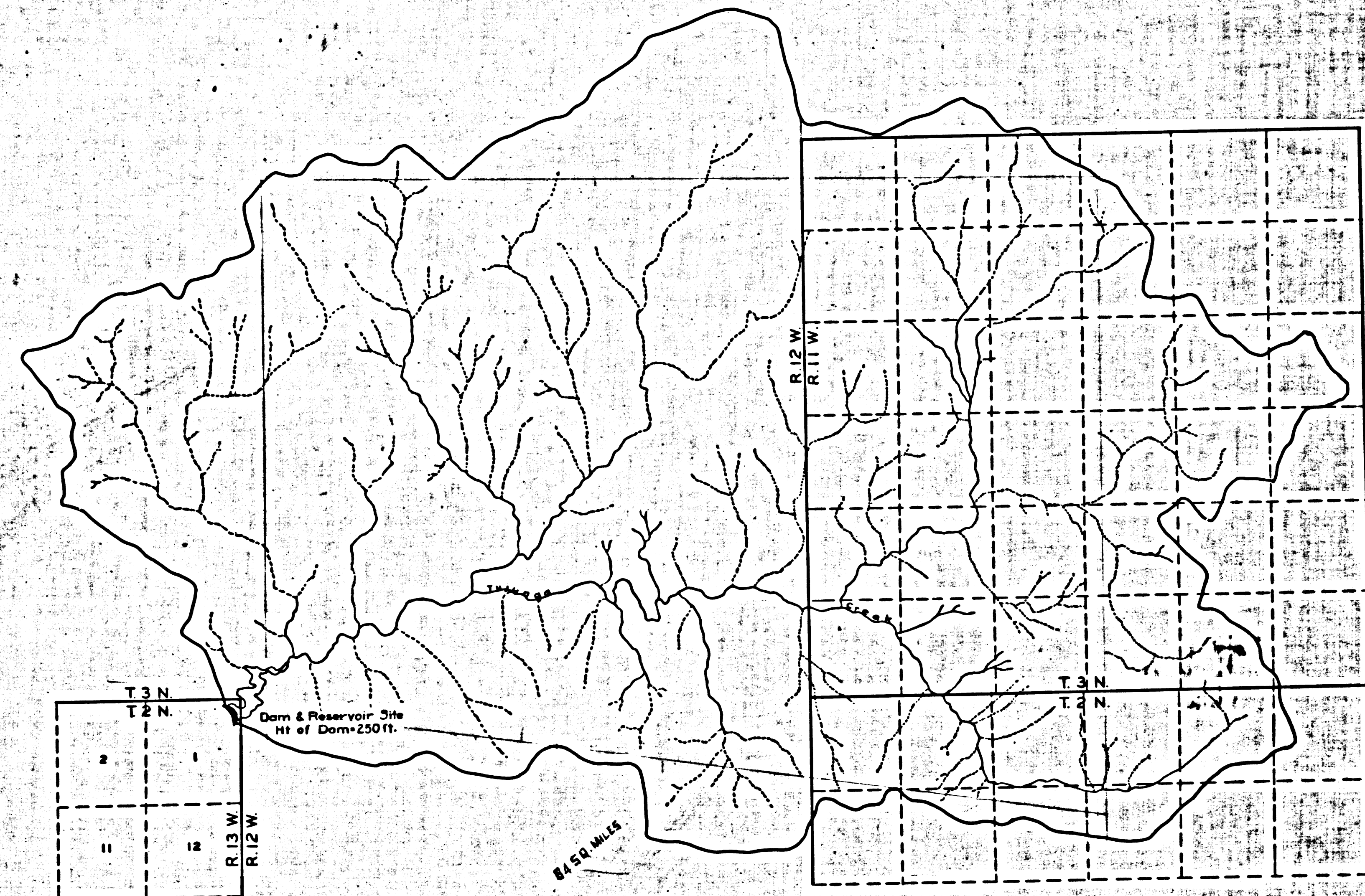
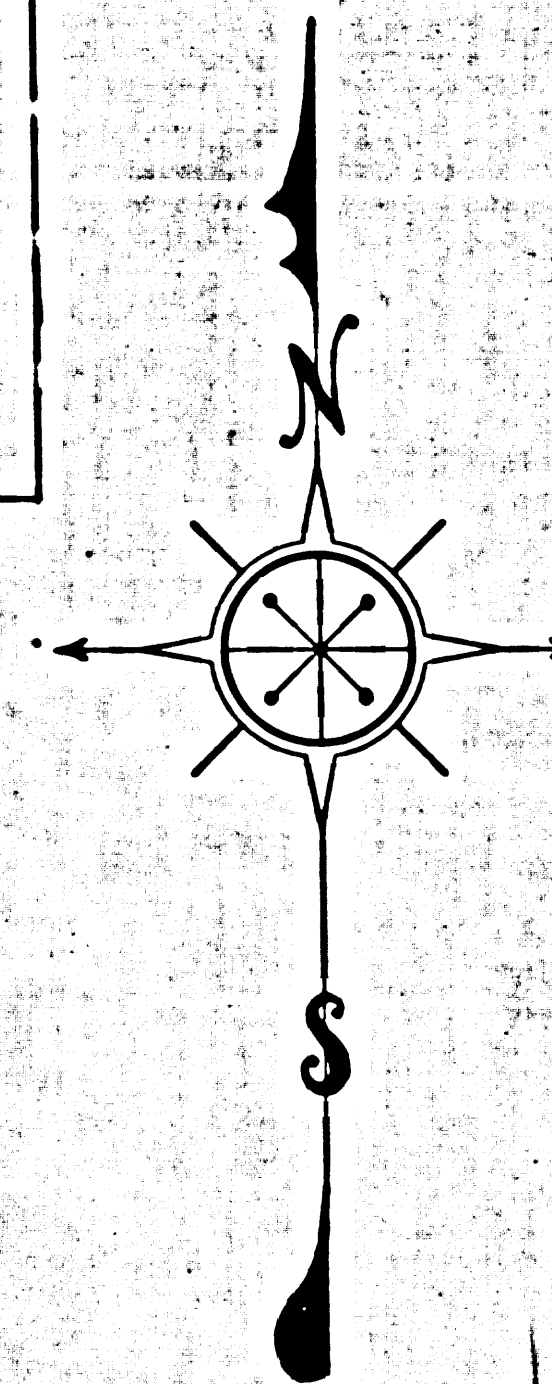
I, R.F. McClellan, do hereby certify that I am chairman of the Board of Supervisors for the Los Angeles County Flood Control District, that E.C. Eaton, who subscribed the accompanying affidavit, is Chief Engineer of said District; that the survey of the said reservoir, as accurately represented on this map and by the accompanying field notes, was made under the authority of the District, that the District is duly authorized by the laws of the State of California to construct the said reservoir upon the location shown upon this map; that the said reservoir as represented on this map and by said field notes, was adopted by the District, by resolution of its Board of Supervisors on the 28th day of April, 1929, as the definite location of the reservoir described as follows:  
An area of 116.1 acres, located in Section 1, Township 2 North, Range 13 West, and Townships 2 and 3 North, Range 12 West, and Township 3 North, Range 13 West of Unsurveyed Lands, San Bernardino Meridian, Los Angeles County, California;  
Beginning at Sta. 0, a point bearing S 0° 02' 55" E, and distant 450 feet from the North East corner of Section 1, T. 2 N., R. 13 W., S. B. M.;  
Thence following the high water line of said reservoir, around the same to Sta. 72;  
Thence, crossing the canyon on a level line, N 15° 02' W, a distance of 644 feet to Sta. 72;  
Thence N 77° E, a distance of 723.31 feet to Sta. 0, the point of beginning.  
And that no lake or lake bed, stream or stream bed, is used for said reservoir except as shown on this map; and that the map has been prepared to be filed for the approval of the Secretary of the Interior, in order that the District may obtain the benefits of Sections 18 to 21 inclusive, of the act of Congress approved March 3, 1891, entitled "An act to repeal timber-culture laws, and for other purposes", and Section 2 of the act approved May 11, 1898; and I further certify that the right of way herein described is desired for the main purpose of irrigation, by controlling and conserving the flood and storm waters and by causing the same to percolate into the soil from which it will be pumped for irrigation of the lands in the District.

Attest: Approved by resolution of the Board of Supervisors.

*R.F. McClellan*  
Chairman of the Board.



SCALE 1"=1000'



DRAINAGE AREA OF BIG TUJUNGA RESERVOIR

Traced from U.S.G.S. Quads  
Tujunga and Rock Creek  
Area 2 x 2 = 4 miles  
Scale 1" = 62,500'  
64

Filed in  
U.S. Land Office  
Los Angeles, California.  
May 21, 1929.  
047313

REFERENCES		REVISIONS			LOS ANGELES COUNTY FLOOD CONTROL DISTRICT	
F.C. 168-189-190	MAP 63-49	MARK	DATE	DESCRIPTION	BIG TUJUNGA DAM AND RESERVOIR PROPOSED RIGHT OF WAY	
APPROVED BY <i>E.C. Eaton</i>					DATE	NO. 63 - M. 2
CHIEF ENGINEER					SHEET	1 OF 1

F.M. 11104