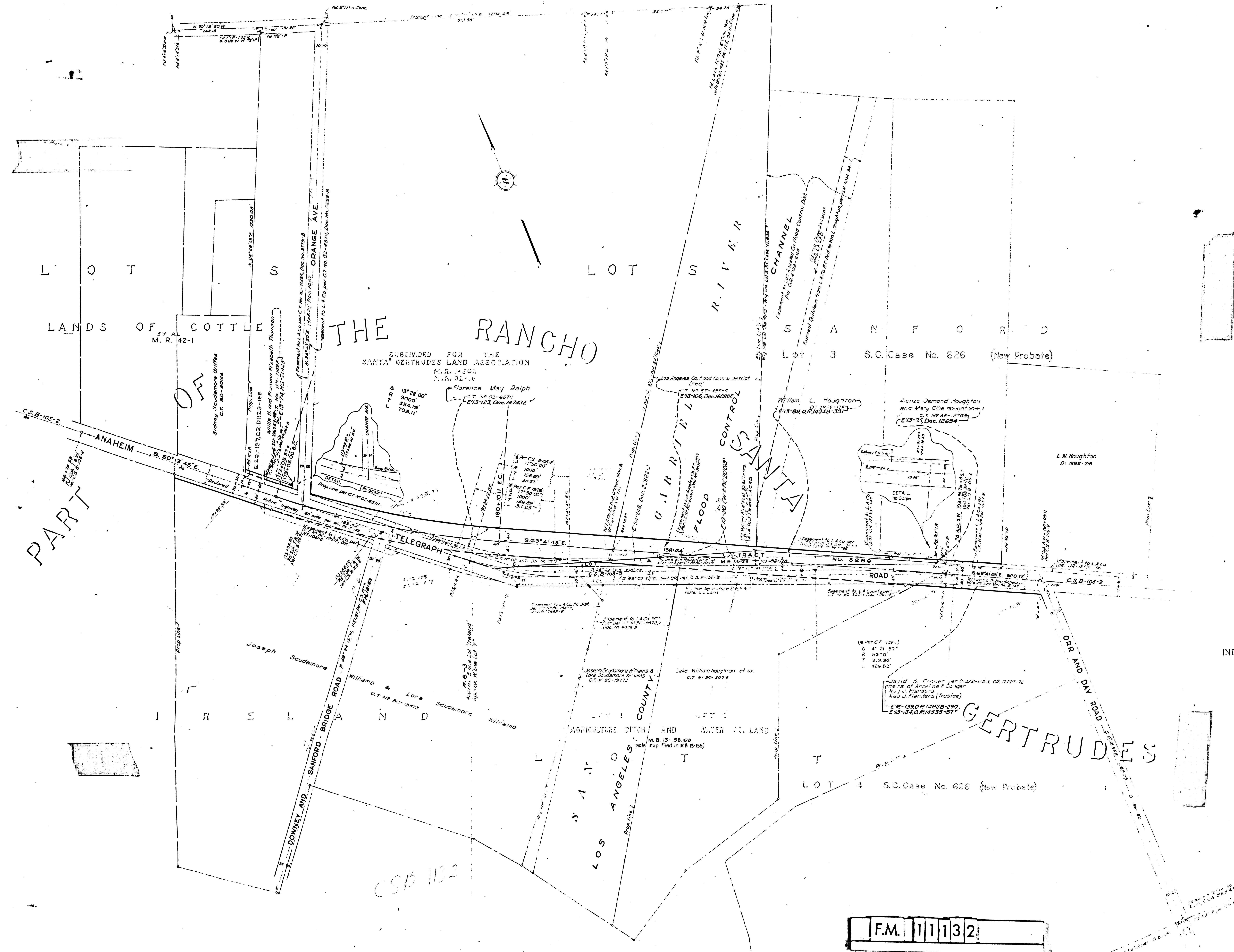


Approved *[Signature]* Sept 1934
 DIST. ENGR. DIST. VI



VII-LA-166-A
 STATE OF CALIFORNIA
 DEPARTMENT OF PUBLIC WORKS
 DIVISION OF HIGHWAYS
RIGHT OF WAY MAP
 SHOWING CHANGE OF ALIGNMENT OF
 Anaheim Telegraph Road
 Across
 San Gabriel River
 Scale 1"=100'
 COUNTY SURVEYORS MAP NO. B-1132

INDEX 33

F.M. 11132

Neatly of this map filed in Blue Print
 Dept. of Negative No. 269.