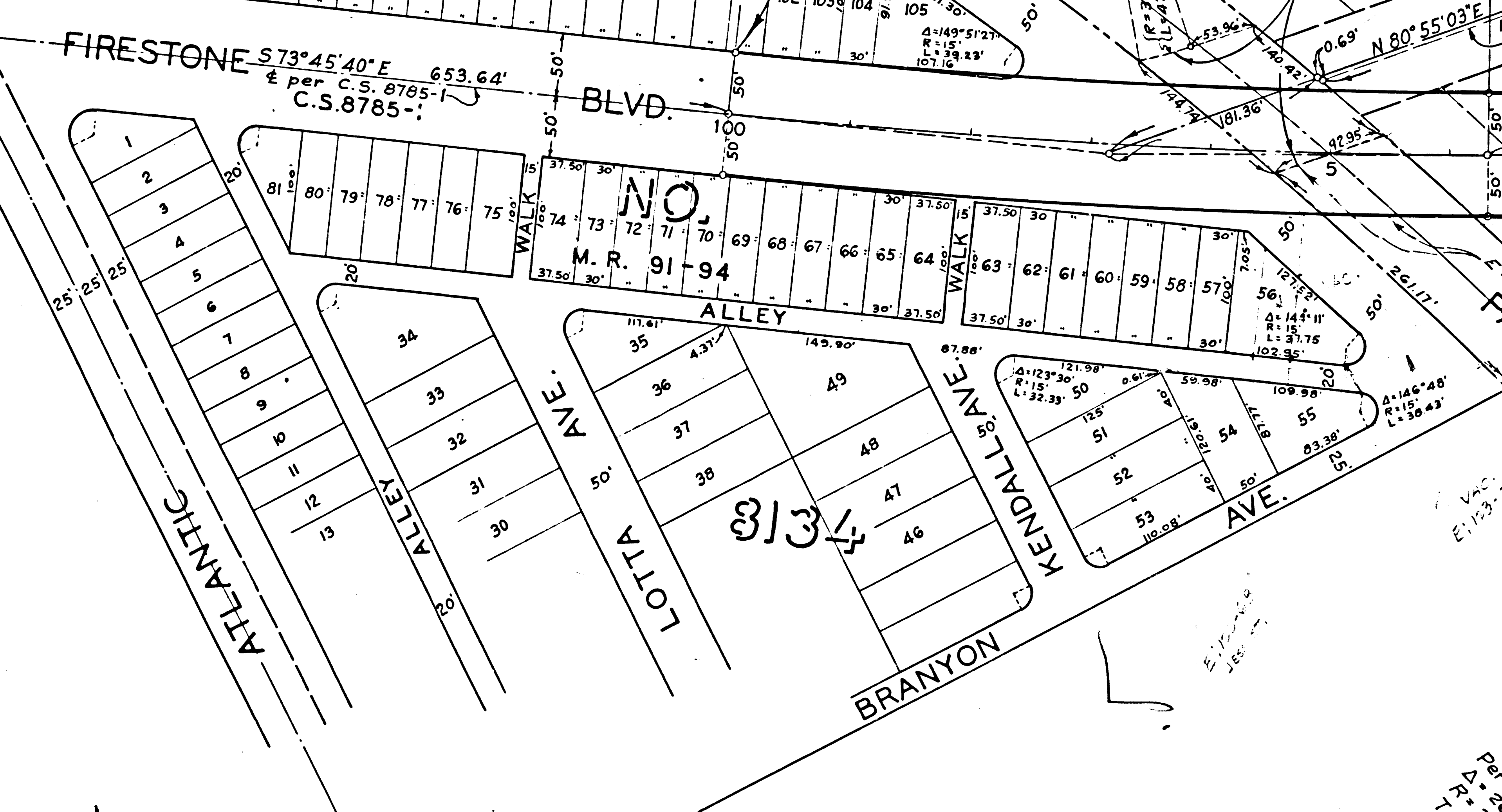
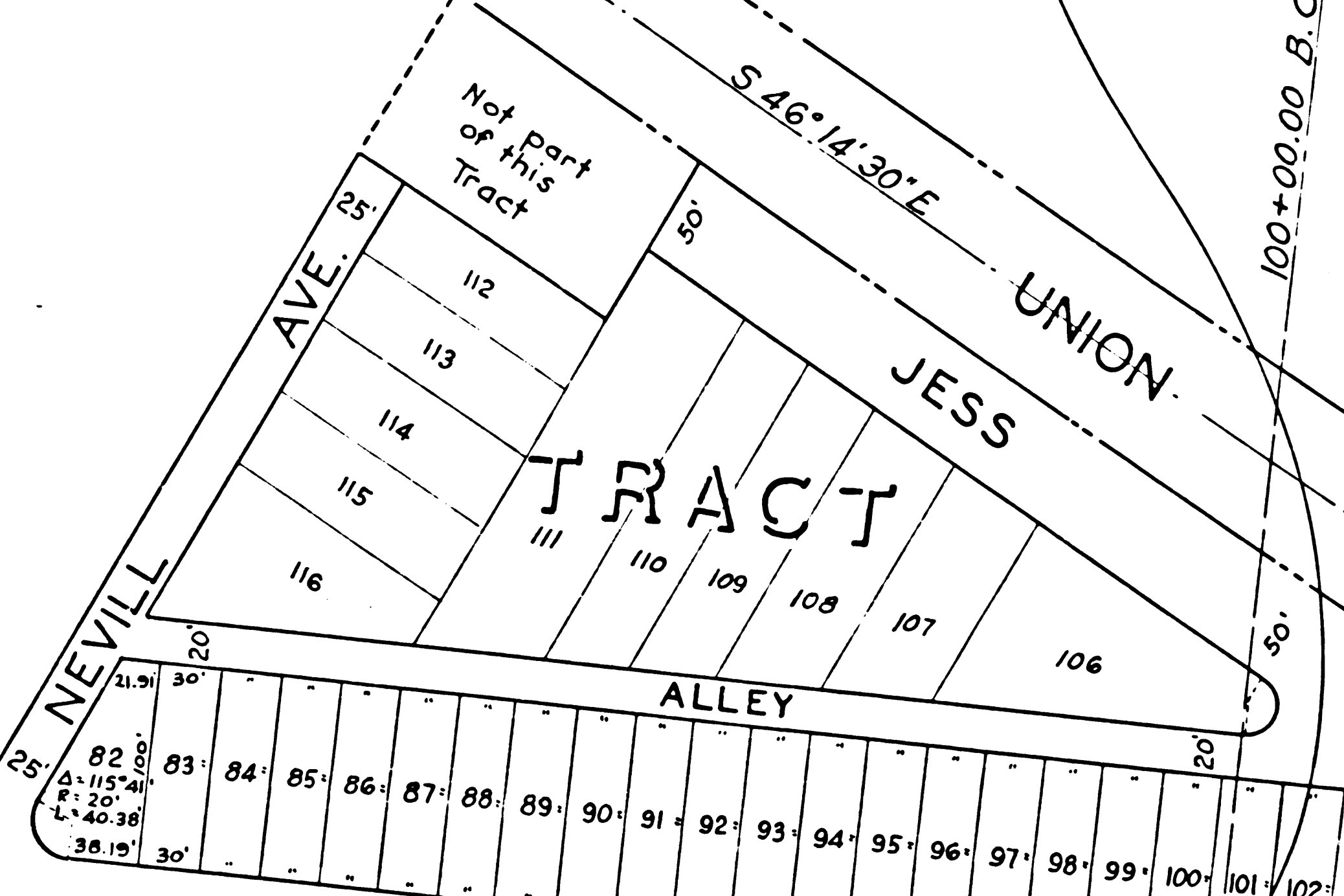


CLEMENTS

TRACT



M.R. 43-46

Proposed $\Delta = 6^{\circ}00'30''$
 $R = 6000'$
 $T = 314.88'$
 $L = 629.19'$

C.S. 8785-3
 $D: 21-2450 R: 11476-374$

$\Delta = 31^{\circ}10'22''$
 $R = 1500'$
 $T = 418.42'$
 $L = 816.10'$

ADAM CLEMENTS
 36.68 Acs.
 Smith

M.R. 91-94

Doris
 $E: 48-133, O.R. 18566-381$

S.W. Cor. of
 $D: 1841-694$
 $K: 33-38, O.R. D 34-600$
 Most Easterly cor.
 of O.R. 14988-346

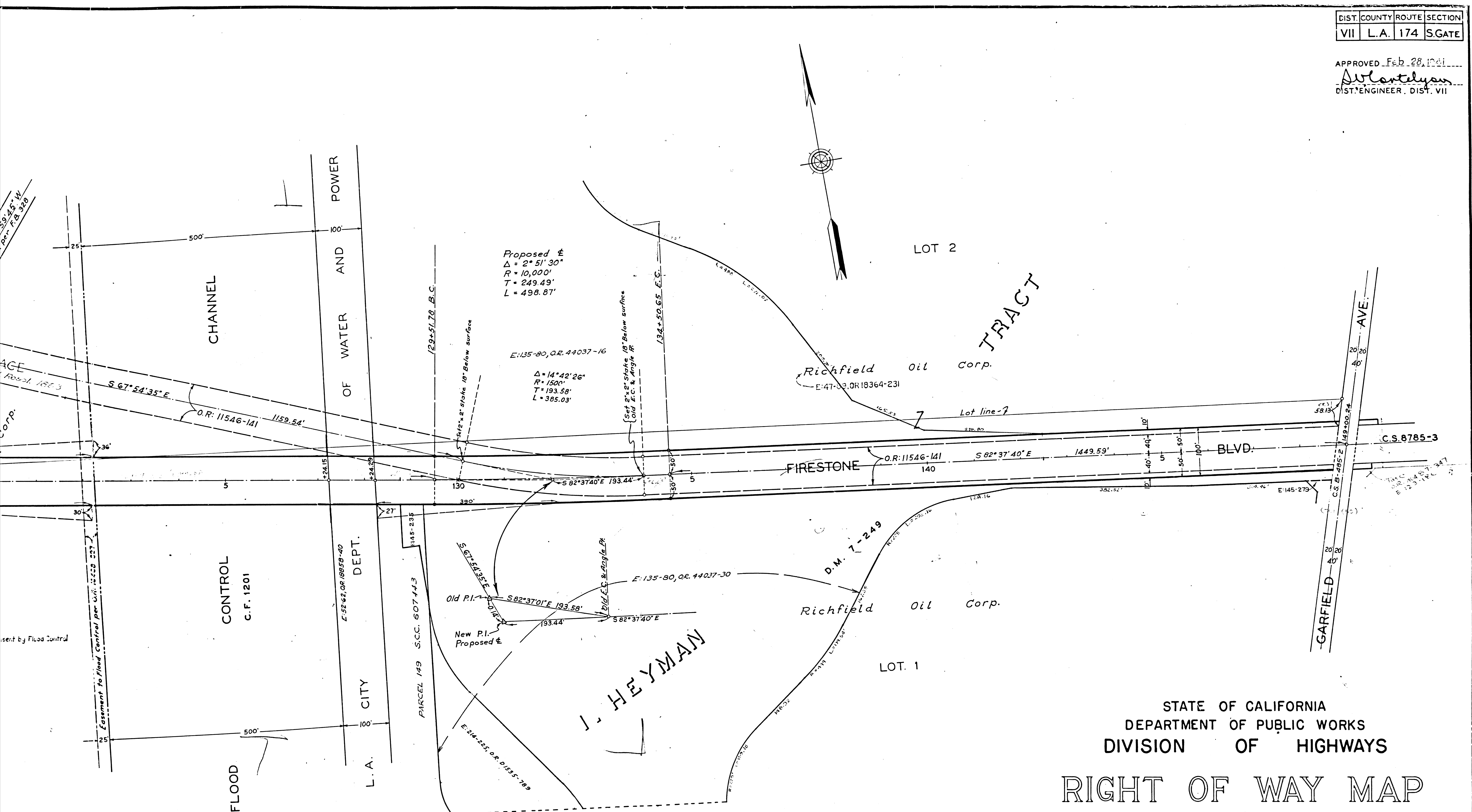
$E: 47-89, O.R. 18364-231$
 $E: 47-126, O.R. 18422-67$ Consent by Flood Control

Measured
 $\Delta = 26^{\circ}35'25''$
 $R = 3021.30'$
 $T = 307.80'$
 $L = 1777.19'$

Per C.S. 6530
 $\Delta = 26^{\circ}35'25''$
 $R = 3021.30'$
 $T = 307.80'$
 $L = 1777.19'$

F.M.	11659
A1	OF A2

APPROVED Feb. 28, 1941
D. Lanteljan
 DIST. ENGINEER, DIST. VII



STATE OF CALIFORNIA
 DEPARTMENT OF PUBLIC WORKS
 DIVISION OF HIGHWAYS

RIGHT OF WAY MAP

ROAD-VII-LA-174-S.GATE
 FIRESTONE BLVD.
 FROM ATLANTIC AVE. TO GARFIELD AVE.



INDEX 32
 FEB. 1941
 NFG. 409

F.M. 11659
 A2 OF A2