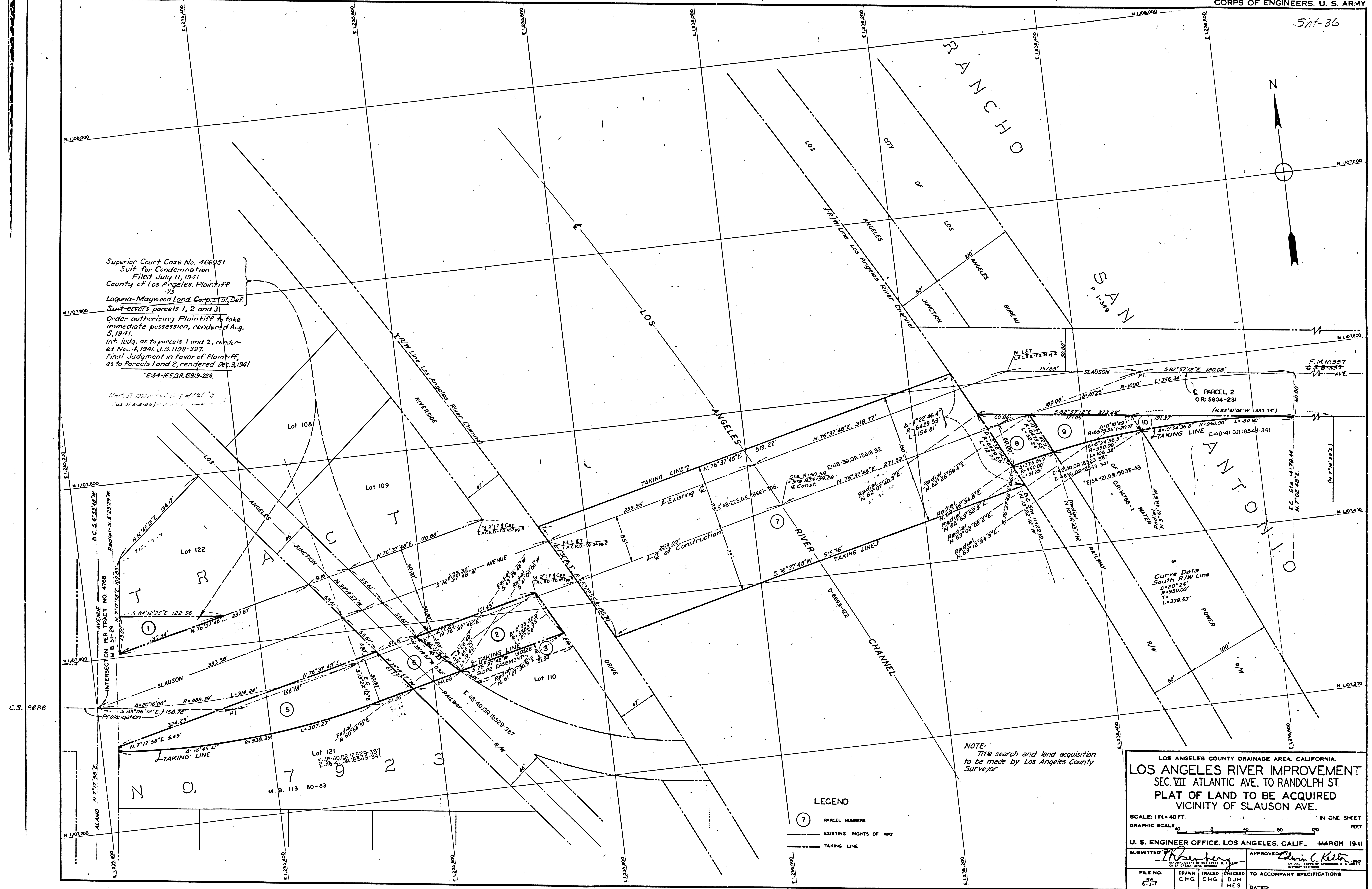
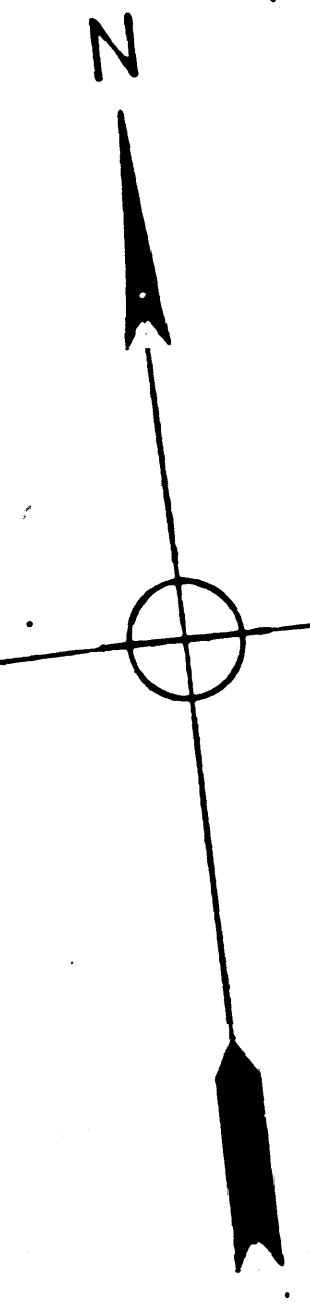


Superior Court Case No. 466051  
 Suit for Condemnation  
 Filed July 11, 1941  
 County of Los Angeles, Plaintiff  
 Vs  
 Laguna-Maywood Land Corp., et al, Def.  
 Suit covers parcels 1, 2 and 3.  
 Order authorizing Plaintiff to take  
 immediate possession, rendered Aug.  
 5, 1941.  
 Int. judg. as to parcels 1 and 2, rendered  
 Nov. 4, 1941, J.B. 1198-387.  
 Final Judgment in favor of Plaintiff,  
 as to Parcels 1 and 2, rendered Dec. 3, 1941  
 E-54-165, O.R. 18319-288.

Part of Drain South of Pal. 3  
 (see of S. 4-44)



C.S. 8686

LEGEND

- ⑦ PARCEL NUMBERS
- EXISTING RIGHTS OF WAY
- TAKING LINE

NOTE:  
 Title search and land acquisition  
 to be made by Los Angeles County  
 Surveyor

LOS ANGELES COUNTY DRAINAGE AREA, CALIFORNIA.  
**LOS ANGELES RIVER IMPROVEMENT**  
 SEC. VII ATLANTIC AVE. TO RANDOLPH ST.  
 PLAT OF LAND TO BE ACQUIRED  
 VICINITY OF SLAUSON AVE.

SCALE: 1 IN. = 40 FT. IN ONE SHEET  
 GRAPHIC SCALE: 0 40 80 120 FEET

U. S. ENGINEER OFFICE, LOS ANGELES, CALIF., MARCH 1941

SUBMITTED: *[Signature]* APPROVED: *[Signature]*  
 CHIEF ENGINEER CHIEF OF DISTRICT

FILE NO. RW 8-37	DRAWN C.H.G.	TRACED C.H.G.	CHECKED D.J.H. M.E.S.	TO ACCOMPANY SPECIFICATIONS DATED:
------------------------	-----------------	------------------	-----------------------------	---------------------------------------

F.M. 11667