

State of California,
County of Los Angeles, ss.

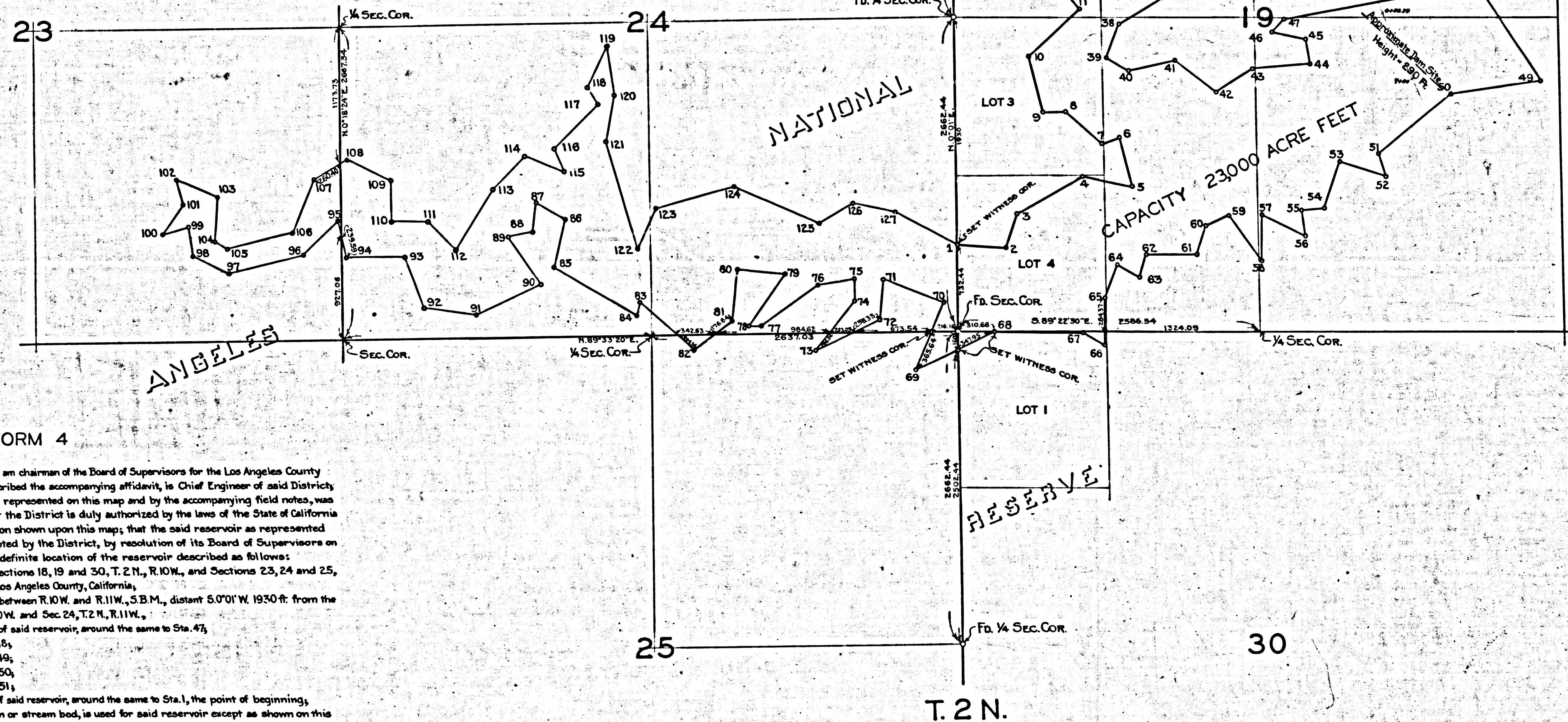
E.C. Eaton, being duly sworn, says he is the Chief Engineer of the Los Angeles County Flood Control District, that the survey of said District's Reservoir described as follows:-
An area of 300.6 acres, located in Sections 18, 19 and 30, T.2 N., R.10 W., and Sections 23, 24 and 25, T.2 N., R.11 W., San Bernardino Meridian, Los Angeles County, California,
Beginning at Sta. 1, a point in the line between R.10 W. and R.11 W., S.B.M., distant 5.070' W. thereon 1930 ft. from the Section Corner common to Sec. 18, T.2 N., R.10 W. and Sec. 24, T.2 N., R.11 W.,
Thence, following the high water line of said reservoir, around the same to Sta. 47;
Thence N. 80°10' E. 1700 ft. to Sta. 48;
Thence S. 33°10' E. 1000 ft. to Sta. 49;
Thence S. 82°35' W. 793.60 ft. to Sta. 50;
Thence S. 51°30' W. 800 ft. to Sta. 51;
Thence, following the high water line of said reservoir, around the same to Sta. 1, the point of beginning, was made under his direction as Chief Engineer of the District, and under its authority, commenced on the 25th day of March, 1931, and that the survey of said reservoir accurately represents a level line, which is the proposed water line of the said reservoir; and that such survey is accurately represented upon this map and by the accompanying field notes. And no lake or lake bed, stream or stream bed, is used for the said reservoir except as shown on this map.

Chief Engineer.

Sworn and subscribed to before me this 11th day of December, 1931.

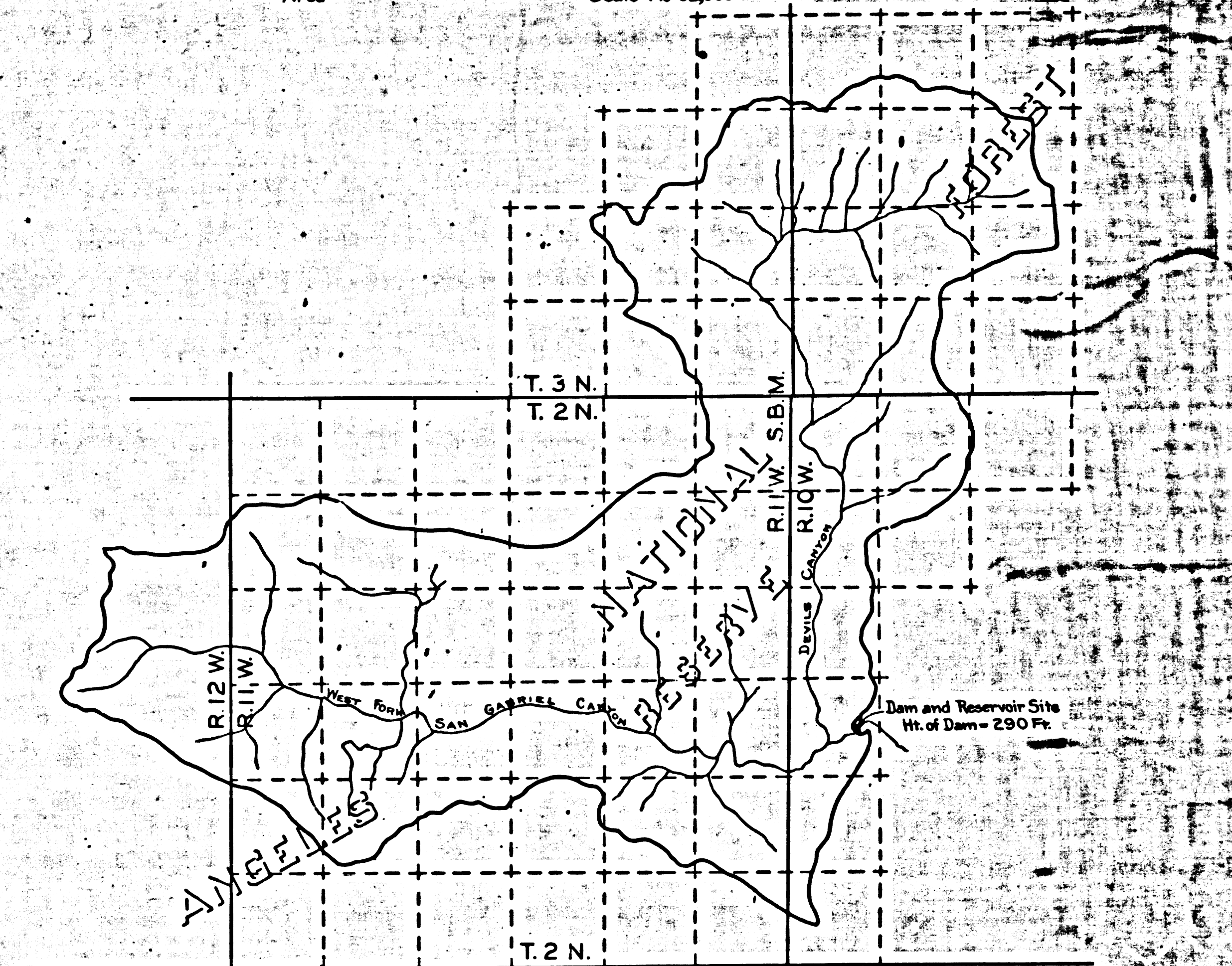
L.E. Lampton, County Clerk

By *H. H. Hagan*
Deputy Clerk



DRAINAGE AREA OF SAN GABRIEL DAM No. 2 RESERVOIR

Traced from U.S.G.S. Quads Tujunga, Rock Creek, Pomona and Pasadena Area
Scale 1 in = 62,500



FORM 4

I, Henry W. Wright, do hereby certify that I am chairman of the Board of Supervisors for the Los Angeles County Flood Control District, that E.C. Eaton, who subscribed the accompanying affidavit, is Chief Engineer of said District, that the survey of said reservoir, as accurately represented on this map and by the accompanying field notes, was made under the authority of the District, that the District is duly authorized by the laws of the State of California to construct the said reservoir upon the location shown upon this map, that the said reservoir as represented on this map and by said field notes, was adopted by the District, by resolution of its Board of Supervisors on the 14th day of December, 1931, as the definite location of the reservoir described as follows:-
An area of 300.6 acres, located in Sections 18, 19 and 30, T.2 N., R.10 W., and Sections 23, 24 and 25, T.2 N., R.11 W., San Bernardino Meridian, Los Angeles County, California,
Beginning at Sta. 1, a point in the line between R.10 W. and R.11 W., S.B.M., distant 5.070' W. thereon 1930 ft. from the Section Corner common to Sec. 18, T.2 N., R.10 W. and Sec. 24, T.2 N., R.11 W.,
Thence, following the high water line of said reservoir, around the same to Sta. 47;
Thence N. 80°10' E. 1700 ft. to Sta. 48;
Thence S. 33°10' E. 1000 ft. to Sta. 49;
Thence S. 82°35' W. 793.60 ft. to Sta. 50;
Thence S. 51°30' W. 800 ft. to Sta. 51;
Thence, following the high water line of said reservoir, around the same to Sta. 1, the point of beginning, was made under his direction as Chairman of the Board of Supervisors, and under its authority, commenced on the 25th day of March, 1931, and that the map has been prepared to be filed for the approval of the Secretary of the Interior, in order that the District may obtain the benefits of Sections 18 to 21 inclusive, of the act of Congress approved March 3, 1891, entitled "An act to repeal timber culture laws, and for other purposes", and Section 2 of the act approved May 11, 1898, and I further certify that the right of way herein described is desired for the main purpose of irrigation, by controlling and conserving the flood and storm waters and by causing the same to percolate into the soil from which it will be pumped for irrigation of lands in the District.

Attest:

L.E. LAMPTON

County Clerk of the County of Los Angeles,
and ex-officio Clerk of the Board of Supervisors
of the Los Angeles County Flood Control District.

By *Henry W. Wright*
Chairman

Henry W. Wright
Chairman of the Board

SCALE 1" = 500'

F.M. 1118931

The true meridian of Longitude 118°20'00" W., being the central meridian of the Triangulation Grid established by the Los Angeles County Flood Control District, was used as the basis of bearings for this survey.

FILE NO. 050003 12-19-31
UNITED STATES LAND OFFICE, LOS ANGELES, CALIF.
EASEMENT NO. 99

REFERENCES	REVISIONS			LOS ANGELES COUNTY FLOOD CONTROL DISTRICT
	MARK	DATE	DESCRIPTION	
				SAN GABRIEL DAM No. 2 AND RESERVOIR PROPOSED RIGHT OF WAY
				APPROVED BY <i>E.C. Eaton</i> CHIEF ENGINEER
				DATE 10-5-31 SHEET NO. 53 ML 72