

FILED MAP NO. 13070

FILED MAP NO. 13070

Former Depot Grounds

OF THE L.A. AND I.R.R. CO AND

ADJOINING PROPERTY situated on the EASTERLY SIDE OF SAN PEDRO ST BETWEEN FOURTH AND FIFTH STS LOS ANGELES CITY CAL

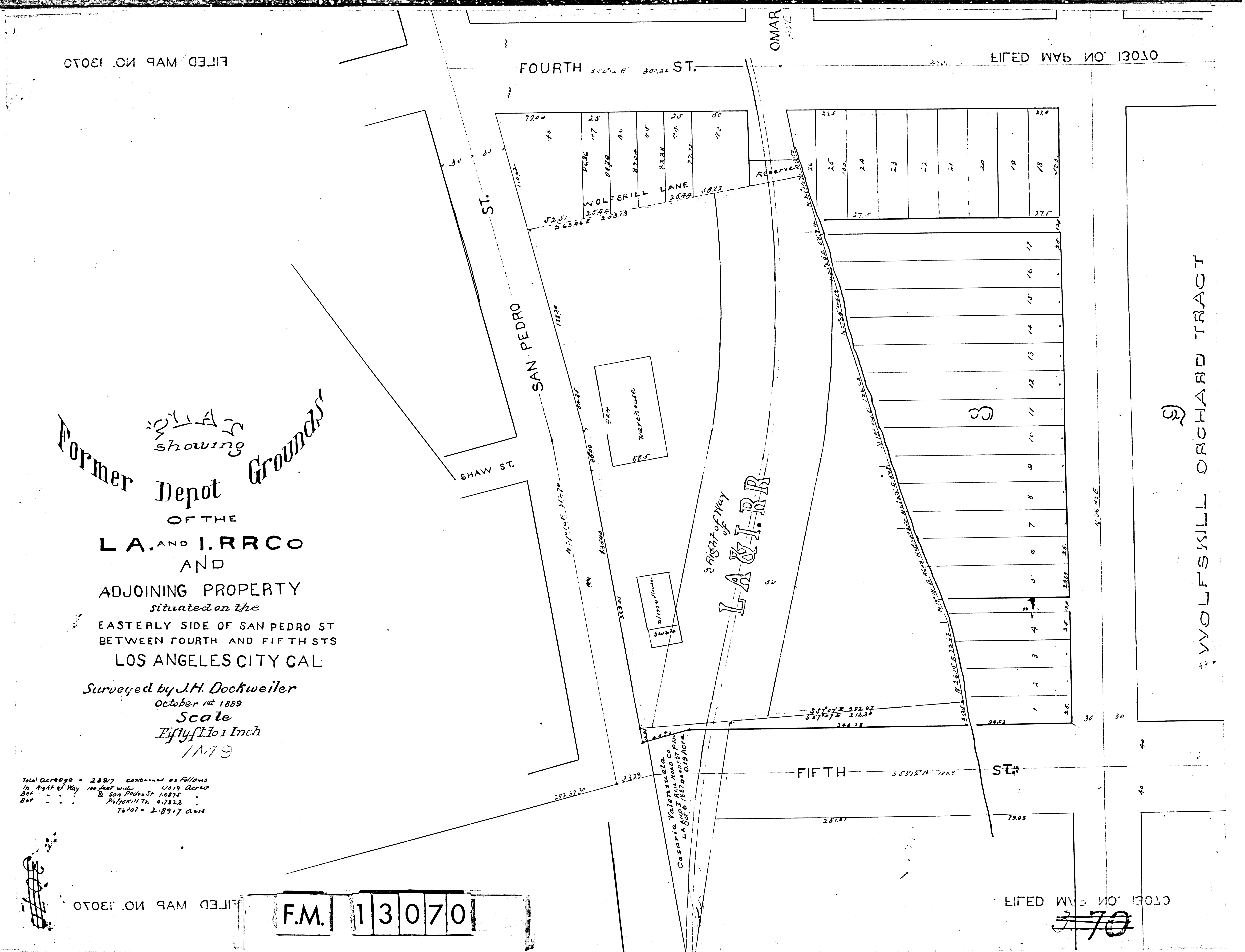
Surveyed by J.H. Dockweiler October 1st 1889 Scale Fifty Feet to 1 Inch 1889

Total Carriage = 2897 contained as follows In Right of Way 100 feet wide 11819 Acres Bet. San Pedro St 10875 Acres Wolfskill Tr. 0.7323 Acres Total = 2.8917 Acres

F.M. 13070

FILED MAP NO. 13070

FILED MAP NO. 13070



WOLFSKILL ORCHARD TRACT

70