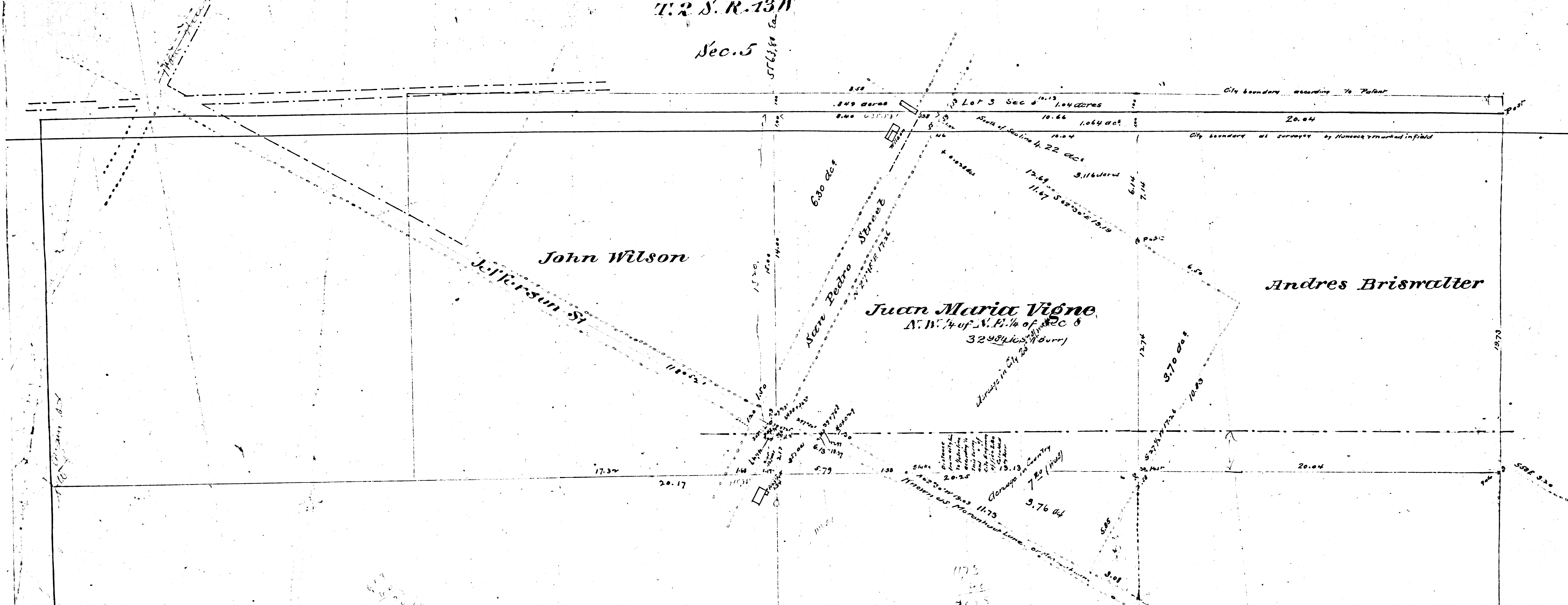


FILED MAP NO. 13072

FILED MAP NO. 13072

T. 2 S. R. 13 W.

Sec. 5



John Wilson

Juan Maria Vigne  
N. W. 1/4 of S. E. 1/4 of Sec 6  
32984 Acres (Burr)

Andres Briswatter

TABLING OF DEED

Course	Distance	Northing	Easting	Westing	Southing
N 73° 12' E	17.26	15.34414	7.90407		
S 63° 30' E	19.19		9.80376	17.02153	
S 27° 00' W	17.26		15.30102		7.97130
N 63° 10' W	19.03	8.78985			16.87761
179° 45'		24.1337y	25.16478	24.72560	24.35071

Surveyed Jan. 22, 26, 31 & Feb. 6-1880  
 on request of Messrs Vigne, Briswatter & Wilson  
 by George Hansen & Alfred Solano  
 Scale of 1 inch to 4 chs. Var. 14° 50' E.  
 authenticated by  
 W.A. Burr (in red)

FILED MAP NO. 13072

Note: The courses and distances are as given in the deed for this map.

IM 7

F.M. 13072

FILED MAP NO. 13072