

# HELLMAN HAAS & CO

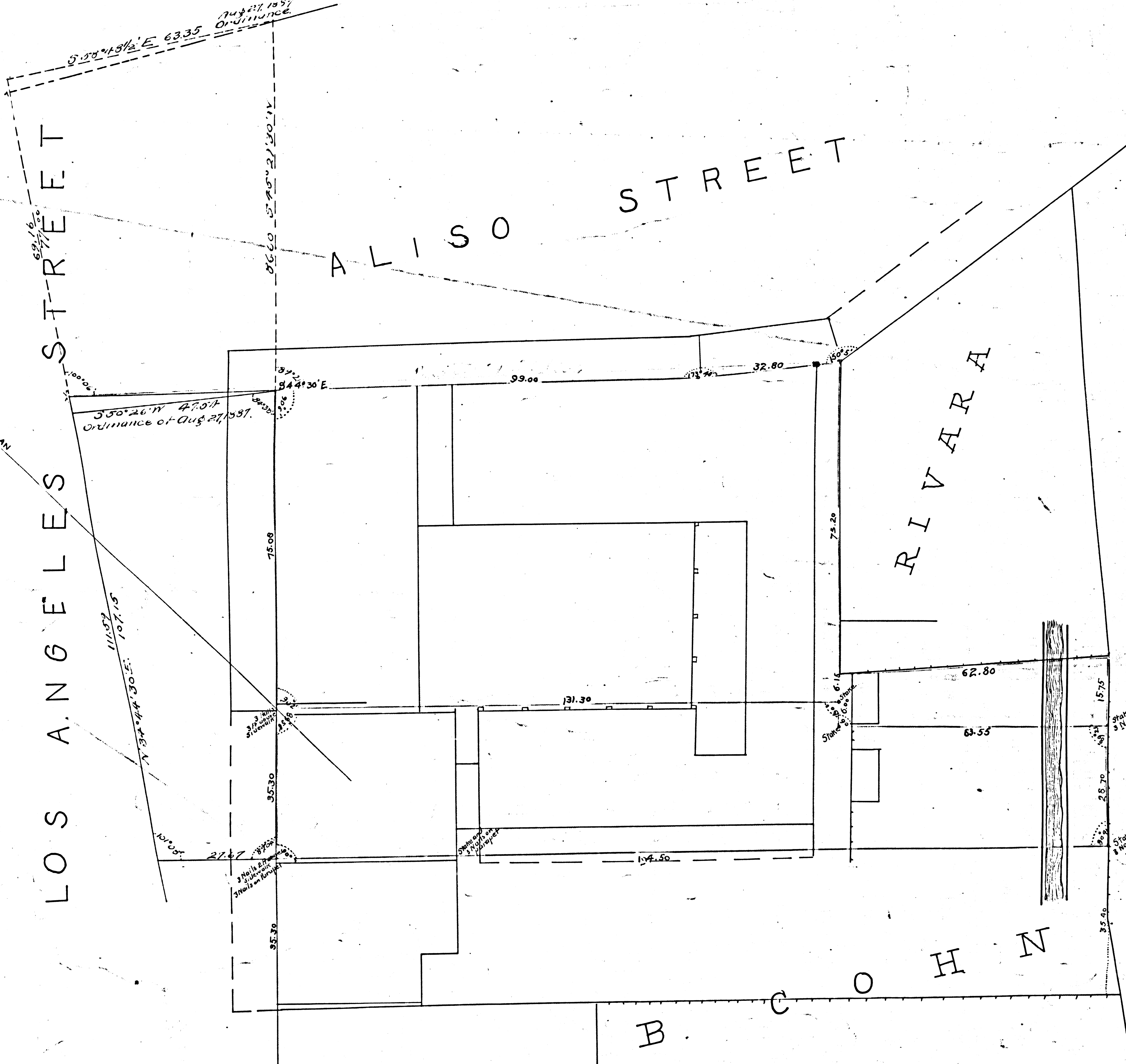
LOS ANGELES CITY, CAL:

Surveyed July 26 and Sept. 11<sup>th</sup> 1887

by *Chas. Frank McCowen*

SCALE: 20 FEET P. INCH.  
DISTANCES IN FEET AND DECS:

Copied from map of  
Hellman Haas & Co.



F.M. 13290 1/2

Blue lines from Abstract of  
Hellman Haas & Co.