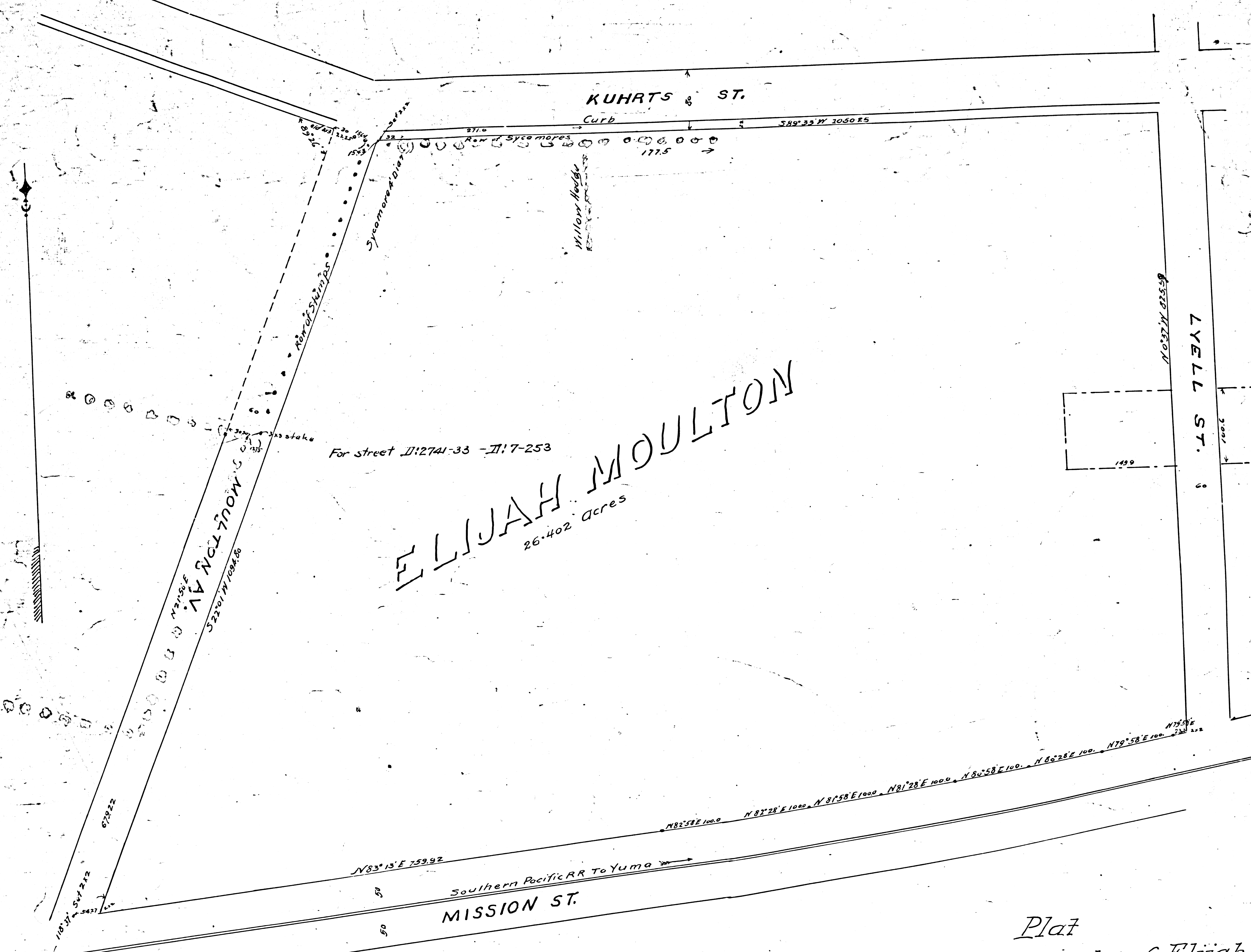


FILED MAP NO. 13291

FILED MAP NO. 13291



ELIJAH MOULTON
26.402 Acres

Plat
showing the property of Elijah Moulton
situated between Moulton Ave, Kuhrts, Lyell,
and Mission Streets Los Angeles City Cal.
Surreyed by J.H. Dockweiler Sept. 26 1889.
Scale 100ft to 1-Inch.

Copied Dec. 1895

F.M. 13291

FILED MAP NO. 13291

FILED MAP NO. 13581

FILED MAP NO. 13581

FILED MAP NO. 13291