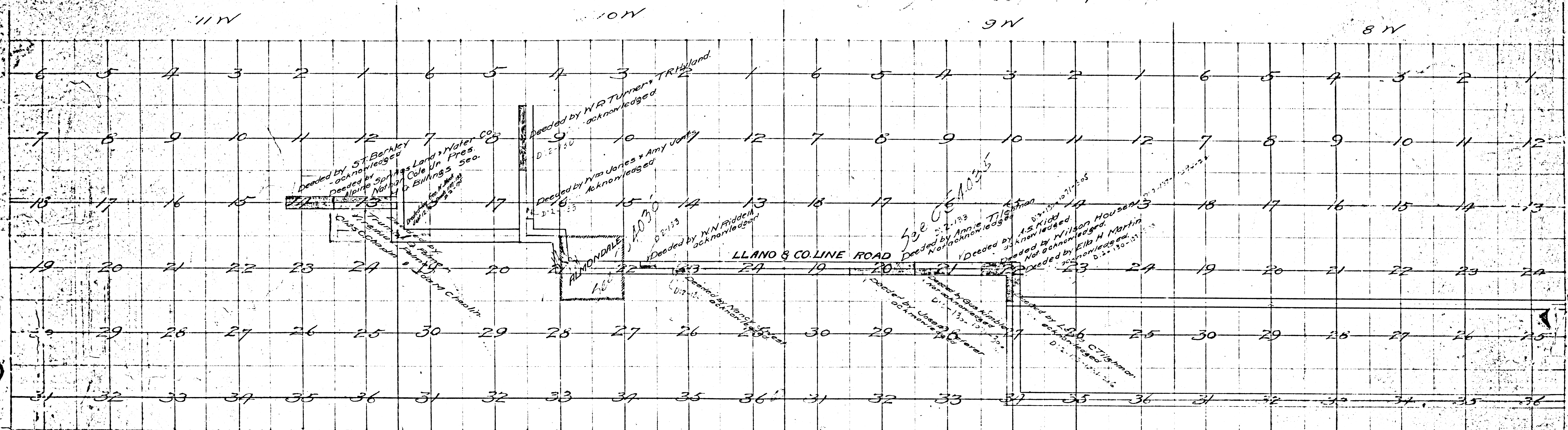


Proposed
 Llano and County Line Road
~~Almondale and Llano Road~~
 adopted March 4th 1897 Minute Book 24 Page 87
 60 feet wide
 from S.W. Cor. Sec. 7-5-10 to S.E. Cor. Sec. 2A-5-8

Declared Highway Mar. 1897 - D. 17-299



Llano & County Line Road

Minute Book 24 Page 87 Mar. 3 17-1897

For establishment of street names see C.S.B-717

111 65
 111 66
 111 67

F.M. 13296