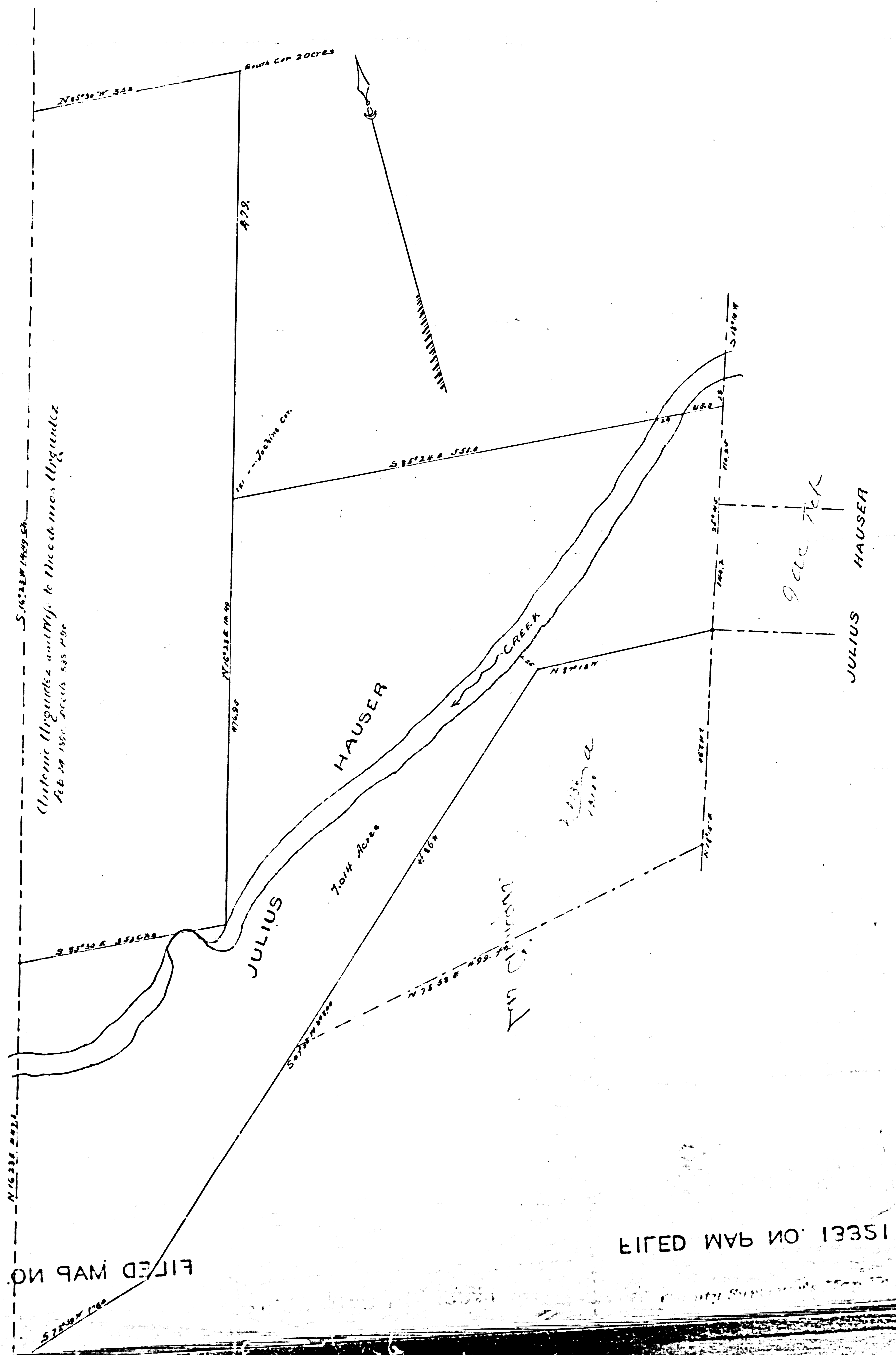


FILED MAP NO. 13351

Plat of a Survey made by the 13351 Rancho La Cienega Los Angeles County Cal

Showing Land purchased by Julius Hauser from
Maria Urquidez and described in deed of Sept 1890
Surveyed at the request of Julius Hauser by J.H. Dockweiler
Sept 1st 1890 Scale 100=1

F.M.
13321



FILED MAP NO. 13351

FILED MAP NO. 13351