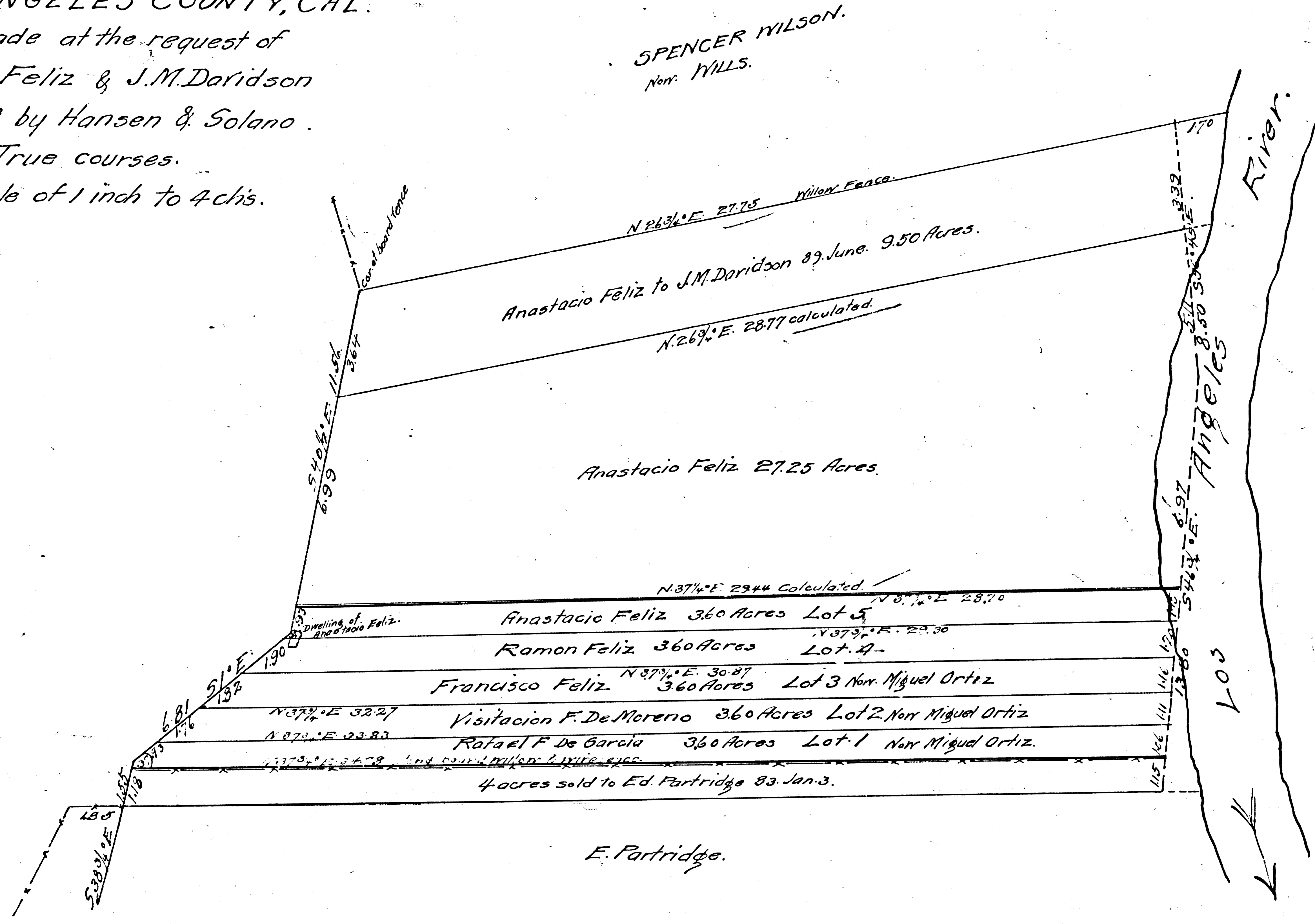


MAP
 OF THE
 ANASTACIO FELIZ TRACT

IN THE RANCHO LOS FELIZ
 LOS ANGELES COUNTY, CAL.
 Survey made at the request of
 Anastacio Feliz & J.M. Davidson
 May 30-1889 by Hansen & Solano.
 True courses.
 Scale of 1 inch to 4 chs.

FILED MAP NO. 13323



F.M. 13353

Note by Co. Surveyor.
 The portion enclosed in blue is recorded in
 B. 22 P. 66 M. R.
 I. M. 41