

FILED MAP NO. 13324

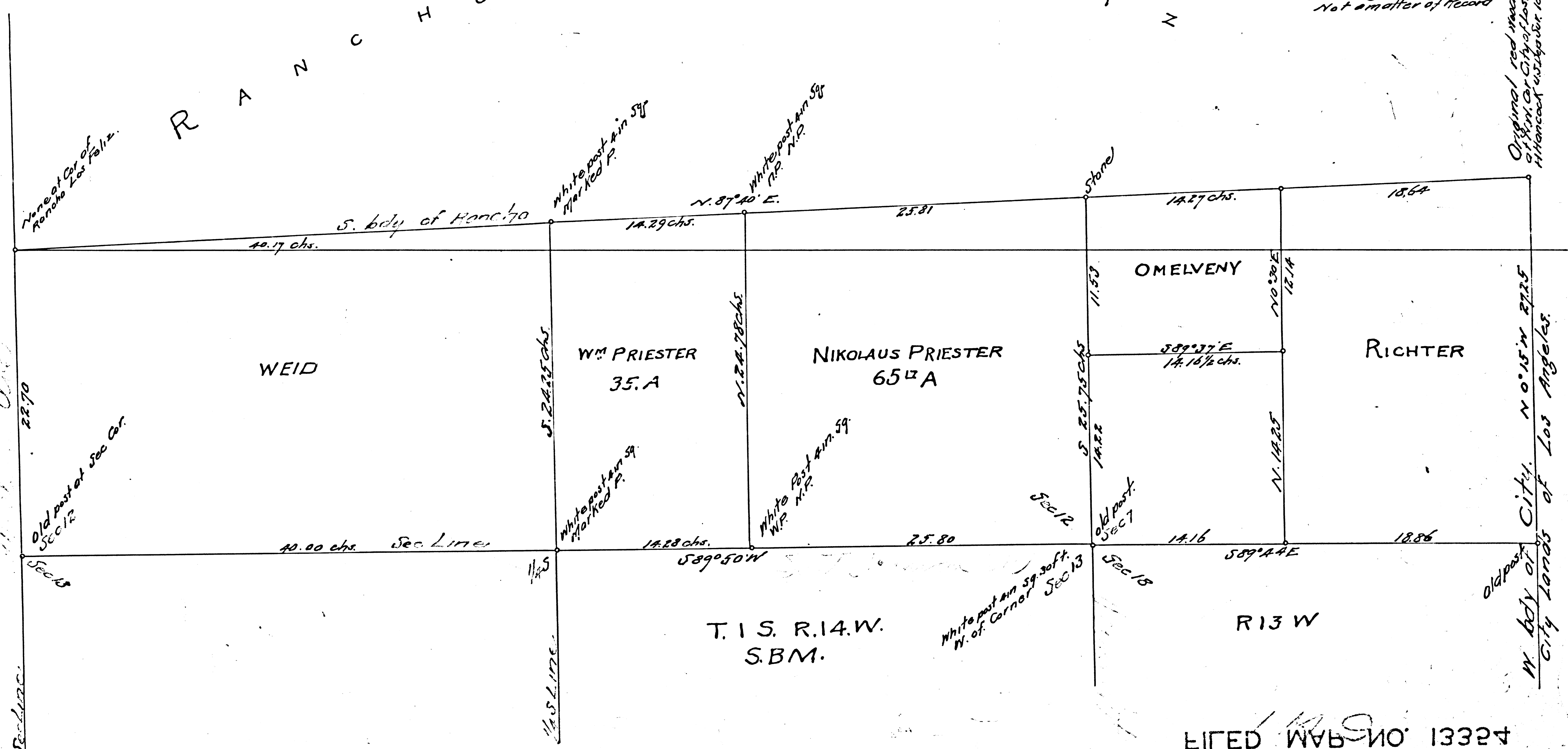
F.M. 13354

FILED MAP NO. 13324

R A N C H O L O S F E L I N

Copied from the original Not a matter of Record

Original red wood post 610 sq. ft. N. of City of Los Angeles set by Hancock & Co. for 1868.



Copied Oct. 21 - 96.

FILED MAP NO. 13324

Scale 8chs. to in.

FILED MAP NO. 13324 Surveyed Feb 28th 1886

Charles T. Healey.

775