

FILED MAP NO. 13356

FILED MAP NO. 13356

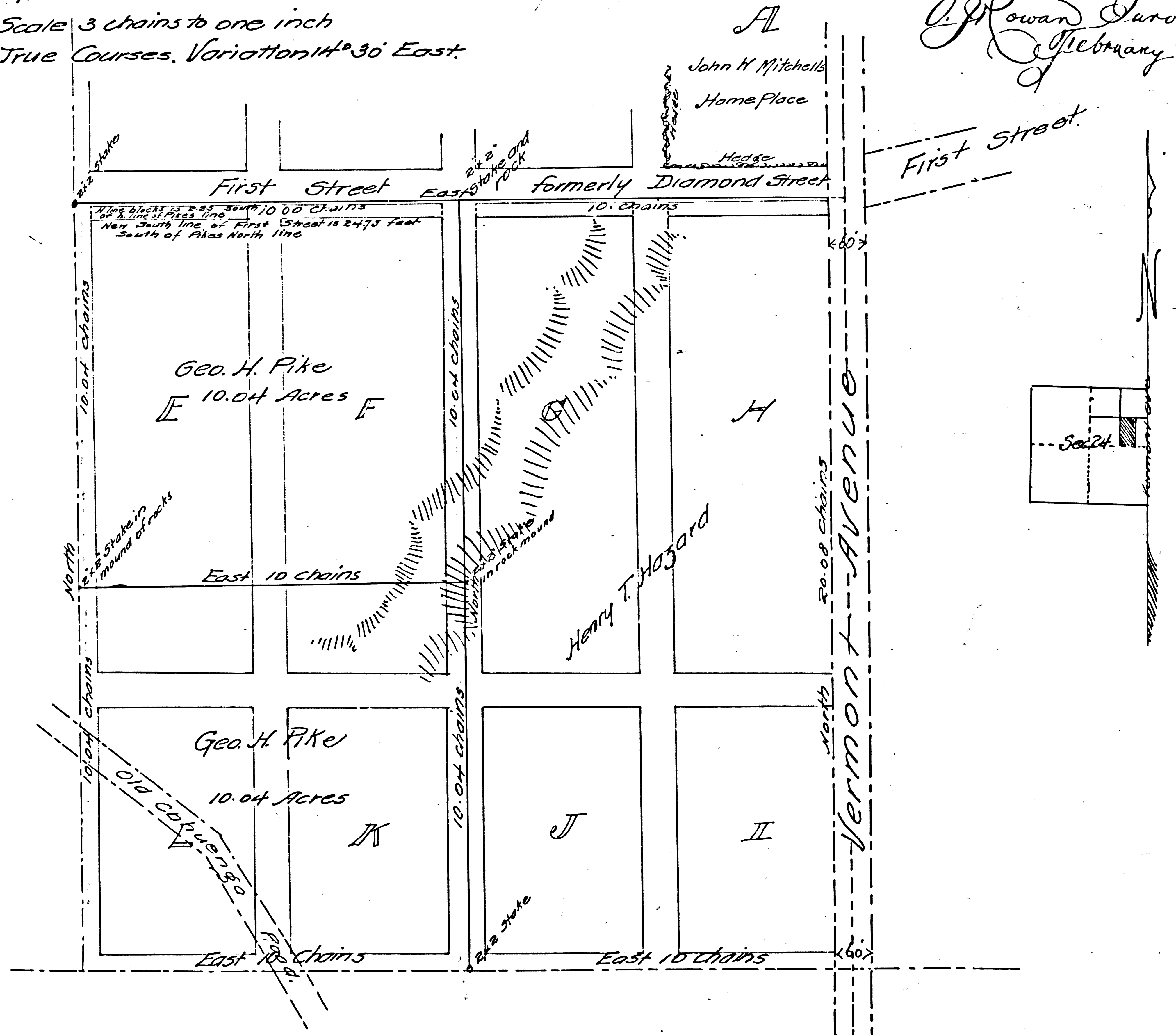
Map of the
West 1/2 of the Southeast 1/4 of the Northeast 1/4 of
Section 24 Township 1 South, Range 14 West San Bernardino Meridian

in accordance with deed from Henry T. Hazard to Geo. H. Pike, dated May 7th
1889, and recorded in Vol. 562 of Deeds at Page 204 records of Los Angeles

County State of California, also showing location of Blocks and Streets in
Hazard's West End or Western Addition within and with reference to the lines of the
first mentioned tract.

Scale 3 chains to one inch
True Courses, Variation 11^o 30' East.

V. J. Rowan Surveyor
February 1896



F.M. 13356

FILED MAP NO. 13356

FILED MAP NO. 13356