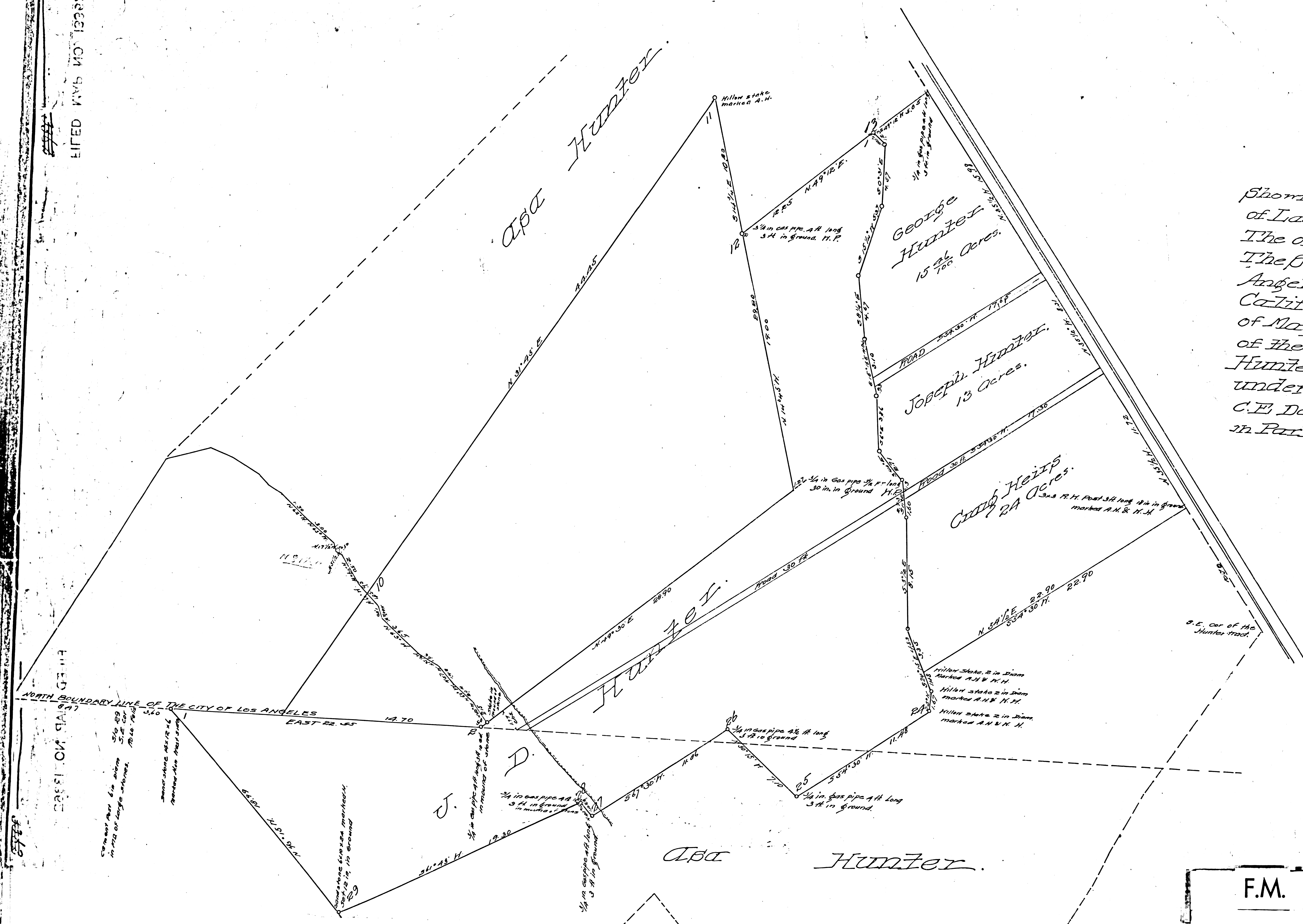


FILED MAP NO. 13362

FILED MAP NO. 13362

Map
 Showing Partition of the Tract
 of Land severally Described in
 The order of Partition made by
 The Superior Court of Los
 Angeles County State of
 California on the 29th day
 of May, 1896, in the matter
 of the Estate of William
 Hunter Deceased, Surveyed
 under instructions from
 C. E. Day, Sole Commissioner,
 in Partition by John Goldsmith

July 31, and Aug. 1, 1896.
 F.M. 16615 F.M. 18055
 C.F. 355 C.F. 355
 I.M. 41



F.M. 13362

FILED MAP NO. 13362