

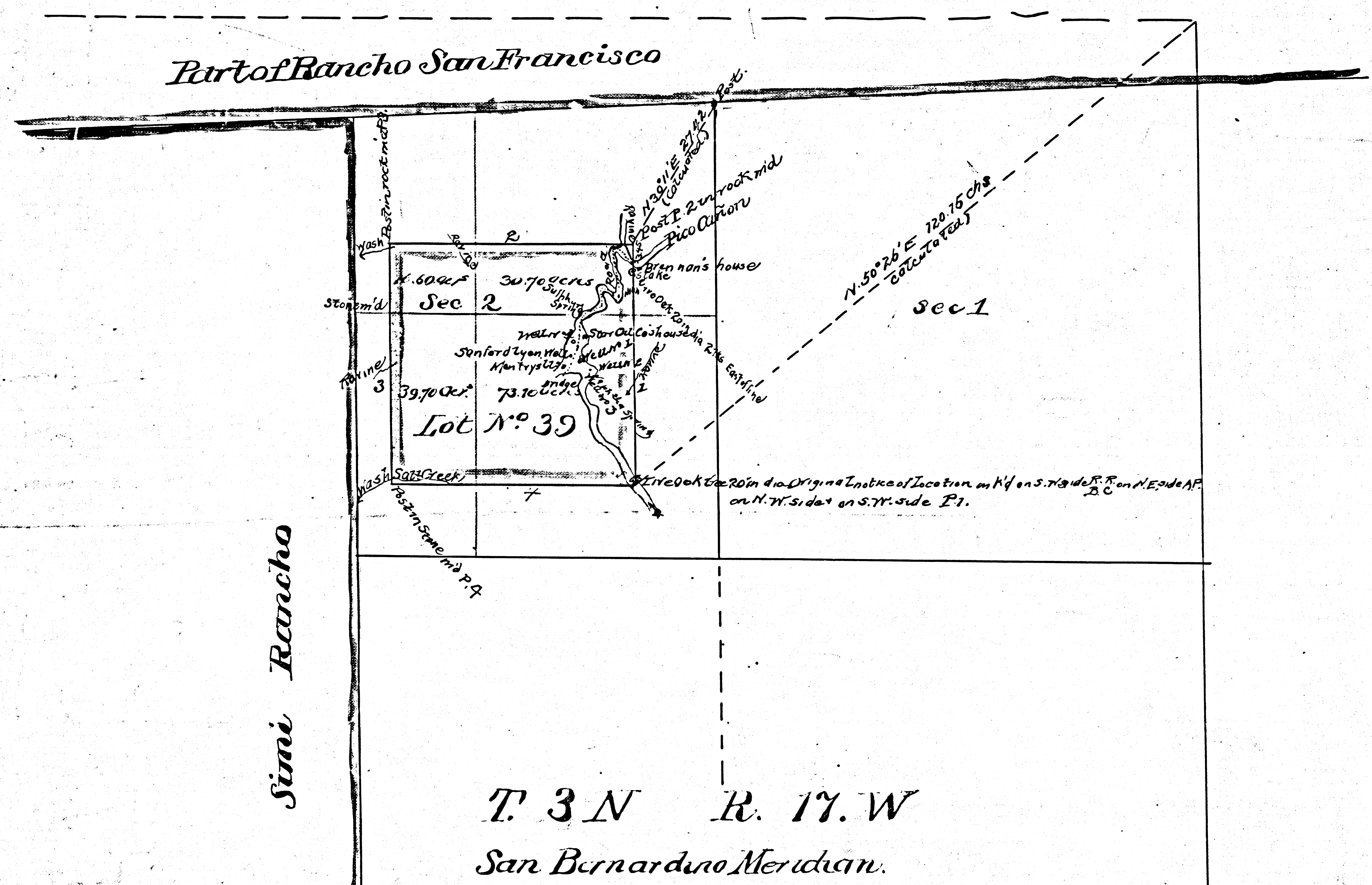
FILED MAP NO. 13375

FILED MAP NO. 13375

PLAT
OF THE
PICO OIL SPRING MINE,
SITUATED IN
Los Angeles County, California.

CLAIMED BY
Robert S. Baker.
Surveyed by
Albert G. Ruxton Dep Surr.
October 1877

Containing 160 Acres.
1M63
Scale 20 Chs to 1 Inch
Var. 15' E.



Boundaries		
No	Bearing	Dist
1	North	40.00
2	West	40.00
3	South	40.00
4	East	40.70

T. 3 N. R. 17. W
San Bernardino Meridian.

F.M. 13372